

CHRRF | IP06-18RUTP-1100E-1100E

Base Product



InstaPATCH® Cu GigaSPEED XL® U/UTP Riser Preterminated Copper Cable, 360 1100 Evolve module to 360 1100 Evolve module, 18 links

This product will be discontinued on: January 31, 2025

Product Classification

| | |
|-----------------------|---|
| Regional Availability | Asia Australia/New Zealand EMEA Latin America North America |
| Portfolio | CommScope® |
| Product Type | Copper trunk cable assembly |
| Product Brand | GigaSPEED XL® InstaPATCH® Cu |

General Specifications

| | |
|--------------------------------|------------------------|
| ANSI/TIA Category | 6 |
| Cable Type | U/UTP (unshielded) |
| Conductor Type | Solid |
| Interface, Connector A | 360 1100 Evolve module |
| Interface Feature, connector A | Standard |
| Interface, Connector B | 360 1100 Evolve module |
| Interface Feature, connector B | Standard |
| Link Count | 18 |
| Wiring | T568B |

Dimensions

| | |
|----------------------------------|---------|
| Cable Assembly Length Range (m) | 2 – 90 |
| Cable Assembly Length Range (ft) | 7 – 295 |

Electrical Specifications

| | |
|------------------------|---------|
| dc Resistance, maximum | 0.3 ohm |
| Safety Voltage Rating | 300 V |

CHRRF | IP06-18RUTP-1100E-1100E

Ordering Tree

12

C A A A C - 1 1 H A B B F 0 5 0

Cable Type

1

A

Cat 6A X10D – U/UTP (Plenum)

B

Cat 6A X10D – U/UTP (Riser)

C

Cat 6A X10D – U/UTP (LSZH)

D

Cat 6A X10D – F/UTP (Plenum)

E

Cat 6A X10D – F/UTP (Riser)

F

Cat 6A X10D – F/UTP (LSZH)

G

Cat 6 XL – U/UTP (Plenum)

H

Cat 6 XL – U/UTP (Riser)

J

Cat 6 XL – U/UTP (LSZH)

Q

Cat 6A X10D – S/FTP (LSZH)

R

Cat 6 – U/UTP Class B Rated (LSZH)

S

Cat 6A – U/UTP Class B Rated (LSZH)

Y

Cat 6A X10D SD – U/UTP (Riser)

Connector A

2

A

Outlet* – Single Row Standard Density

B

Outlet* – Dual Row Standard Density

C

Outlet* – Dual Row High Density

G

RJ45 Plug* – Single Row Standard Density

H

RJ45 Plug* – Dual Row Standard Density

J

RJ45 Plug* – Dual Row High Density

N

1100 Module

R

360 1100 Evolve Module

S

OneLink 2x6

T

OneLink 2x4

X

Unterminated

Connector B

3

A

Outlet* – Single Row Standard Density

B

Outlet* – Dual Row Standard Density

C

Outlet* – Dual Row High Density

G

RJ45 Plug* – Single Row Standard Density

H

RJ45 Plug* – Dual Row Standard Density

J

RJ45 Plug* – Dual Row High Density

N

1100 Module

R

360 1100 Evolve Module

S

OneLink 2x6

T

OneLink 2x4

Orientation A

5

1

Trident Series Flat

2

Right Paired Flat

3

Right Series Flat

4

Left Paired Flat

5

Left Series Flat

6

Trident Paired Flat

A

Trident Series Angled

B

Right Paired Angled

C

Right Series Angled

D

Left Paired Angled

E

Left Series Angled

F

Trident Paired Angled

Orientation B

6

1

Trident Series Flat

2

Right Paired Flat

3

Right Series Flat

4

Left Paired Flat

5

Left Series Flat

6

Trident Paired Flat

A

Trident Series Angled

B

Right Paired Angled

C

Right Series Angled

D

Left Paired Angled

E

Left Series Angled

F

Trident Paired Angled

X

Not Applicable

Link

4

B

6

C

8

D

12

E

16

F

18

G

24

Outlet Color

9

0

Not Applicable

1

Black (BK)

2

Blue (BL)

8

White (WH)

UOM

11

F

Foot

M

Meter

Length

12

XXX

Bundling

7

H

Hook-n-loop

S

Sleeving

Jacket Color

10

B

White (WH)

C

Slate (SL)

Z

Blue (BL)

Labeling

8

A

Generic Label

Cords > 1m are authorized for use in channels and are an effective standalone method used to connect active devices

Cords < 1m are also valid elements for use in a channel or as an equipment interconnect, but due to their limited length are not guaranteed to meet component compliance requirements that were developed to assess the quality of longer cords

Environmental Specifications

| | |
|-----------------------|--------------------------------------|
| Operating Temperature | -10 °C to +60 °C (+14 °F to +140 °F) |
| Environmental Space | Riser |
| Flammability Rating | UL 94 V-0 |

Regulatory Compliance/Certifications

| | |
|---------------|--|
| Agency | Classification |
| ISO 9001:2015 | Designed, manufactured and/or distributed under this quality management system |

Included Products

| | | |
|----------------------|---|---|
| 1071E-4/23 | – | GigaSPEED XL® 1071E ETL Verified Category 6 U/UTP Cable, non-plenum, 4 pair count |
| 760151167 | – | SYSTIMAX 360™ GigaSPEED XL® 1100GS3 Evolve Category 6 U/UTP Distribution Module, 6 port |
| 360-IPR-1100-GS3-DM6 | | |

Page 2 of 8

©2024 CommScope, Inc. All rights reserved. CommScope and the CommScope logo are registered trademarks of CommScope and/or its affiliates in the U.S. and other countries. For additional trademark information see <https://www.commscope.com/trademarks>. All product names, trademarks and registered trademarks are property of their respective owners. Revised: August 15, 2024

COMMScope®



GigaSPEED XL® 1071E ETL Verified Category 6 U/UTP Cable, non-plenum, 4 pair count

Product Classification

| | |
|-----------------------|---|
| Regional Availability | Asia Australia/New Zealand EMEA Latin America North America |
| Portfolio | SYSTIMAX® |
| Product Type | Twisted pair cable |
| Product Brand | GigaSPEED XL® |
| Ordering Note | Not available in Europe, the Middle East, or Africa |

General Specifications

| | |
|-------------------------|---|
| Product Number | 1071E |
| ANSI/TIA Category | 6 |
| Cable Component Type | Horizontal |
| Cable Type | U/UTP (unshielded) |
| Conductor Type, singles | Solid |
| Conductors, quantity | 8 |
| Pairs, quantity | 4 |
| Separator Type | Bisector |
| Transmission Standards | ANSI/TIA-568.2-D CENELEC EN 50288-6-1 ISO/IEC 11801 Class E |

Dimensions

| | |
|-------------------------------|---------------------|
| Diameter Over Jacket, nominal | 5.893 mm 0.232 in |
| Jacket Thickness | 0.559 mm 0.022 in |
| Conductor Gauge, singles | 23 AWG |

Cross Section Drawing



Electrical Specifications

| | |
|---------------------------------------|---|
| dc Resistance Unbalance, maximum | 5 % |
| dc Resistance, maximum | 7.61 ohms/100 m 2.32 ohms/100 ft |
| Dielectric Strength, minimum | 1500 Vac 2500 Vdc |
| Mutual Capacitance at Frequency | 5.6 nF/100 m @ 1 kHz |
| Nominal Velocity of Propagation (NVP) | 69 % |
| Operating Frequency, maximum | 300 MHz |
| Operating Voltage, maximum | 80 V |
| Remote Powering | Fully complies with the recommendations set forth by IEEE 802.3bt (Type 4) for the safe delivery of power over LAN cable when installed according to ISO/IEC 14763-2, CENELEC EN 50174-1, CENELEC EN 50174-2 or TIA TSB-184-A |

Material Specifications

| | |
|---------------------|-------------|
| Conductor Material | Bare copper |
| Insulation Material | Polyolefin |
| Jacket Material | PVC |
| Separator Material | Polyolefin |

Mechanical Specifications

1071E-4/23

Pulling Tension, maximum 11.34 kg | 25 lb

Environmental Specifications

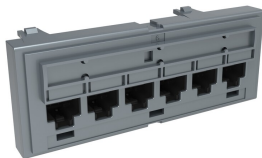
Installation temperature 0 °C to +60 °C (+32 °F to +140 °F)
Operating Temperature -20 °C to +60 °C (-4 °F to +140 °F)
Environmental Space Non-plenum
Temperature Rating, UL 75 °C | 167 °F
Flame Test Method CMG | CMR

Packaging and Weights

Cable weight 38.097 kg/km | 25.6 lb/kft

Regulatory Compliance/Certifications

| Agency | Classification |
|---------------|--|
| ISO 9001:2015 | Designed, manufactured and/or distributed under this quality management system |



SYSTIMAX 360™ GigaSPEED XL® 1100GS3 Evolve Category 6 U/UTP Distribution Module, 6 port

Product Classification

| | |
|-----------------------|---|
| Regional Availability | Asia Australia/New Zealand EMEA Latin America North America |
| Portfolio | SYSTIMAX® |
| Product Type | Module |
| Product Brand | GigaSPEED XL® |

General Specifications

| | |
|-----------------------|------------------|
| ANSI/TIA Category | 6 |
| Cable Type | Unshielded |
| Color | Cool gray |
| Conductor Type | Solid Stranded |
| Intelligence Type | iPatch® ready |
| Modules, quantity | 1 |
| Rack Type | EIA 19 in |
| Rack Units | 1 |
| Termination Type | IDC |
| Total Ports, quantity | 6 |
| Wiring | T568A T568B |

Dimensions

| | |
|--|---------------------|
| Height | 43.688 mm 1.72 in |
| Width | 106.68 mm 4.2 in |
| Depth | 27.432 mm 1.08 in |
| Compatible Diameter Over Dielectric, maximum | 1.168 mm 0.046 in |
| Compatible Diameter Over Dielectric, minimum | 0.762 mm 0.03 in |
| Compatible Conductor Gauge, solid | 22 AWG 24 AWG |

760151167 | 360-IPR-1100-GS3-DM6

| | | |
|---|---|---|
| Compatible Conductor Gauge, stranded | | 22 AWG 24 AWG |
| Electrical Specifications | | |
| Current Rating at Temperature | | 1.5 A @ 20 °C 1.5 A @ 68 °F |
| Dielectric Withstand Voltage, RMS, conductive surface | | 1,500 Vac @ 60 Hz |
| Dielectric Withstand Voltage, RMS, contact-to-contact | | 1,000 Vac @ 60 Hz |
| Insulation Resistance, minimum | | 500 MOhm |
| Material Specifications | | |
| Contact Plating Material | | Precious metals |
| Material Type | | High-impact, flame retardant, thermoplastic Powder-coated steel |
| Termination Contact Plating | | Nickel |
| Mechanical Specifications | | |
| Plug Insertion Life, minimum | | 750 times |
| Plug Insertion Life, test plug | | IEC 60603-7 compliant plug |
| Plug Retention Force, minimum | | 133.447 N 30 lbf |
| Environmental Specifications | | |
| Operating Temperature | | -10 °C to +60 °C (+14 °F to +140 °F) |
| Storage Temperature | | -40 °C to +70 °C (-40 °F to +158 °F) |
| Relative Humidity | | Up to 95%, non-condensing |
| Flammability Rating | | UL 94 V-0 |
| Safety Standard | | UL cUL |
| Packaging and Weights | | |
| Packaging quantity | | 1 |
| Weight, net | | 0.068 kg 0.15 lb |
| Regulatory Compliance/Certifications | | |
| Agency | Classification | |
| CHINA-ROHS | Below maximum concentration value | |
| ISO 9001:2015 | Designed, manufactured and/or distributed under this quality management system | |
| REACH-SVHC | Compliant as per SVHC revision on www.commscope.com/ProductCompliance | |

| | |
|---------|-----------|
| ROHS | Compliant |
| UK-ROHS | Compliant |

