

CJGRG | IP06-24LUTP-PG1S-1100E

Base Product



InstaPATCH® Cu GigaSPEED XL® U/UTP LSZH Preterminated Copper Cable, single row standard density RJ45 plug to 360 1100 Evolve module, 24 links

This product will be discontinued on: January 31, 2025

Product Classification

Regional Availability	Asia Australia/New Zealand EMEA Latin America North America
Portfolio	CommScope®
Product Type	Copper trunk cable assembly
Product Brand	GigaSPEED XL® InstaPATCH® Cu

General Specifications

ANSI/TIA Category	6
Cable Type	U/UTP (unshielded)
Conductor Type	Solid
Interface, Connector A	RJ45 plug
Interface Feature, connector A	Single row Standard density
Interface, Connector B	360 1100 Evolve module
Interface Feature, connector B	Standard
Link Count	24
Wiring	T568B

Dimensions

Cable Assembly Length Range (m)	2 – 30
Cable Assembly Length Range (ft)	7 – 98

Electrical Specifications

dc Resistance, maximum	0.3 ohm
Safety Voltage Rating	300 V

Ordering Tree

123456789101112

CACAC-11HABBF050

Cable Type

1

A

Cat 6A X10D – U/UTP (Plenum)

B

Cat 6A X10D – U/UTP (Riser)

C

Cat 6A X10D – U/UTP (LSZH)

D

Cat 6A X10D – F/UTP (Plenum)

E

Cat 6A X10D – F/UTP (Riser)

F

Cat 6A X10D – F/UTP (LSZH)

G

Cat 6 XL – U/UTP (Plenum)

H

Cat 6 XL – U/UTP (Riser)

J

Cat 6 XL – U/UTP (LSZH)

Q

Cat 6A X10D – S/FTP (LSZH)

R

Cat 6 – U/UTP Class B Rated (LSZH)

S

Cat 6A – U/UTP Class B Rated (LSZH)

Y

Cat 6A X10D SD – U/UTP (Riser)

Connector A

A

Outlet* – Single Row Standard Density

B

Outlet* – Dual Row Standard Density

C

Outlet* – Dual Row High Density

G

RJ45 Plug* – Single Row Standard Density

H

RJ45 Plug* – Dual Row Standard Density

J

RJ45 Plug* – Dual Row High Density

N

1100 Module

R

360 1100 Evolve Module

S

OneLink 2x6

T

OneLink 2x4

X

Unterminated

Connector B

A

Outlet* – Single Row Standard Density

B

Outlet* – Dual Row Standard Density

C

Outlet* – Dual Row High Density

G

RJ45 Plug* – Single Row Standard Density

H

RJ45 Plug* – Dual Row Standard Density

J

RJ45 Plug* – Dual Row High Density

N

1100 Module

R

360 1100 Evolve Module

S

OneLink 2x6

T

OneLink 2x4

Link

B

6

C

8

D

12

E

16

F

18

G

24

Bundling

H

Hook-n-loop

S

Sleeving

Labeling

A

Generic Label

Orientation A

1

Trident Series Flat

2

Right Paired Flat

3

Right Series Flat

4

Left Paired Flat

5

Left Series Flat

6

Trident Paired Flat

A

Trident Series Angled

B

Right Paired Angled

C

Right Series Angled

D

Left Paired Angled

E

Left Series Angled

F

Trident Paired Angled

Orientation B

1

Trident Series Flat

2

Right Paired Flat

3

Right Series Flat

4

Left Paired Flat

5

Left Series Flat

6

Trident Paired Flat

A

Trident Series Angled

B

Right Paired Angled

C

Right Series Angled

D

Left Paired Angled

E

Left Series Angled

F

Trident Paired Angled

X

Not Applicable

Outlet Color

0

Not Applicable

1

Black (BK)

2

Blue (BL)

8

White (WH)

Jacket Color

8

White (WH)

C

Slate (SL)

Z

Blue (BL)

UOM

11

F

Foot

M

Meter

Length

12

XXX

Cords > 1m are authorized for use in channels and are an effective standalone method used to connect active devices

Cords < 1m are also valid elements for use in a channel or as an equipment interconnect, but due to their limited length are not guaranteed to meet component compliance requirements that were developed to assess the quality of longer cords

Environmental Specifications

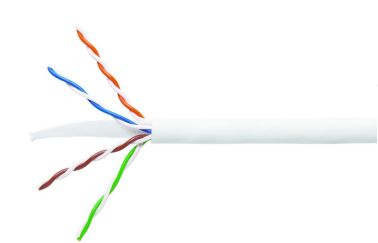
Operating Temperature	-10 °C to +60 °C (+14 °F to +140 °F)
Environmental Space	Low Smoke Zero Halogen (LSZH)
Flammability Rating	UL 94 V-0

Regulatory Compliance/Certifications

Agency	Classification
ISO 9001:2015	Designed, manufactured and/or distributed under this quality management system

Included Products

3071E-4/23	– GigaSPEED XL® 3071 ETL Verified Category 6 U/UTP Cable, low smoke zero halogen, 4 pair count
760151167 360-IPR-1100-GS3-DM6	– SYSTIMAX 360™ GigaSPEED XL® 1100GS3 Evolve Category 6 U/UTP Distribution Module, 6 port



GigaSPEED XL® 3071 ETL Verified Category 6 U/UTP Cable, low smoke zero halogen, 4 pair count

Product Classification

Regional Availability	Asia Australia/New Zealand EMEA Latin America
Portfolio	SYSTIMAX®
Product Type	Twisted pair cable
Product Brand	GigaSPEED XL®

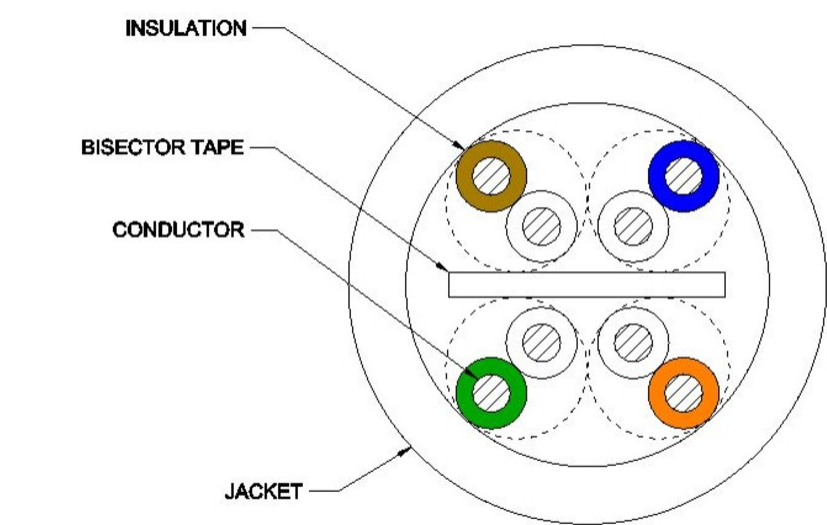
General Specifications

Product Number	3071E
ANSI/TIA Category	6
Cable Component Type	Horizontal
Cable Type	U/UTP (unshielded)
Conductor Type, singles	Solid
Conductors, quantity	8
Pairs, quantity	4
Separator Type	Bisector
Transmission Standards	ANSI/TIA-568.2-D CENELEC EN 50288-6-1 ISO/IEC 11801 Class E

Dimensions

Diameter Over Jacket, nominal	5.918 mm 0.233 in
Jacket Thickness	0.508 mm 0.02 in
Conductor Gauge, singles	23 AWG

Cross Section Drawing



Electrical Specifications

dc Resistance Unbalance, maximum	5 %
dc Resistance, maximum	7.61 ohms/100 m 2.32 ohms/100 ft
Mutual Capacitance at Frequency	5.6 nF/100 m @ 1 kHz
Nominal Velocity of Propagation (NVP)	69 %
Operating Frequency, maximum	300 MHz
Operating Voltage, maximum	80 V
Remote Powering	Fully complies with the recommendations set forth by IEEE 802.3bt (Type 4) for the safe delivery of power over LAN cable when installed according to ISO/IEC 14763-2, CENELEC EN 50174-1, CENELEC EN 50174-2 or TIA TSB-184-A

Material Specifications

Conductor Material	Bare copper
Insulation Material	Polyolefin
Jacket Material	Low Smoke Zero Halogen (LSZH)
Separator Material	Polyolefin

Mechanical Specifications

Pulling Tension, maximum	11.34 kg 25 lb
--------------------------	------------------

Environmental Specifications

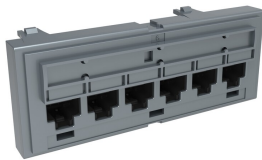
Installation temperature	0 °C to +60 °C (+32 °F to +140 °F)
Operating Temperature	-20 °C to +60 °C (-4 °F to +140 °F)
Acid Gas Test Method	IEC 60754-2
Environmental Space	Low Smoke Zero Halogen (LSZH)
Flame Test Method	IEC 60332-3-22
Smoke Test Method	IEC 61034-2

Packaging and Weights

Cable weight	37.204 kg/km 25 lb/kft
--------------	--------------------------

Regulatory Compliance/Certifications

Agency	Classification
ISO 9001:2015	Designed, manufactured and/or distributed under this quality management system



SYSTIMAX 360™ GigaSPEED XL® 1100GS3 Evolve Category 6 U/UTP Distribution Module, 6 port

Product Classification

Regional Availability	Asia Australia/New Zealand EMEA Latin America North America
Portfolio	SYSTIMAX®
Product Type	Module
Product Brand	GigaSPEED XL®

General Specifications

ANSI/TIA Category	6
Cable Type	Unshielded
Color	Cool gray
Conductor Type	Solid Stranded
Intelligence Type	iPatch® ready
Modules, quantity	1
Rack Type	EIA 19 in
Rack Units	1
Termination Type	IDC
Total Ports, quantity	6
Wiring	T568A T568B

Dimensions

Height	43.688 mm 1.72 in
Width	106.68 mm 4.2 in
Depth	27.432 mm 1.08 in
Compatible Diameter Over Dielectric, maximum	1.168 mm 0.046 in
Compatible Diameter Over Dielectric, minimum	0.762 mm 0.03 in
Compatible Conductor Gauge, solid	22 AWG 24 AWG

760151167 | 360-IPR-1100-GS3-DM6

Compatible Conductor Gauge, stranded		22 AWG 24 AWG
Electrical Specifications		
Current Rating at Temperature		1.5 A @ 20 °C 1.5 A @ 68 °F
Dielectric Withstand Voltage, RMS, conductive surface		1,500 Vac @ 60 Hz
Dielectric Withstand Voltage, RMS, contact-to-contact		1,000 Vac @ 60 Hz
Insulation Resistance, minimum		500 MOhm
Material Specifications		
Contact Plating Material		Precious metals
Material Type		High-impact, flame retardant, thermoplastic Powder-coated steel
Termination Contact Plating		Nickel
Mechanical Specifications		
Plug Insertion Life, minimum		750 times
Plug Insertion Life, test plug		IEC 60603-7 compliant plug
Plug Retention Force, minimum		133.447 N 30 lbf
Environmental Specifications		
Operating Temperature		-10 °C to +60 °C (+14 °F to +140 °F)
Storage Temperature		-40 °C to +70 °C (-40 °F to +158 °F)
Relative Humidity		Up to 95%, non-condensing
Flammability Rating		UL 94 V-0
Safety Standard		UL cUL
Packaging and Weights		
Packaging quantity		1
Weight, net		0.068 kg 0.15 lb
Regulatory Compliance/Certifications		
Agency	Classification	
CHINA-ROHS	Below maximum concentration value	
ISO 9001:2015	Designed, manufactured and/or distributed under this quality management system	
REACH-SVHC	Compliant as per SVHC revision on www.commscope.com/ProductCompliance	

ROHS	Compliant
UK-ROHS	Compliant

