

CRRRB | IP06-06BUTP-1100E-1100E

Base Product



InstaPATCH® Cu GigaSPEED XL® U/UTP LSZH Class B2ca
Preterminated Copper Cable, 360 1100 Evolve module to 360 1100
Evolve module, 6 links

This product will be discontinued on: January 31, 2025

Product Classification

Regional Availability	EMEA
Portfolio	CommScope®
Product Type	Copper trunk cable assembly
Product Brand	GigaSPEED XL® InstaPATCH® Cu
Ordering Note	Available cable jacket colors: blue, white

General Specifications

ANSI/TIA Category	6
Cable Type	U/UTP (unshielded)
Conductor Type	Solid
Interface, Connector A	360 1100 Evolve module
Interface Feature, connector A	Standard
Interface, Connector B	360 1100 Evolve module
Interface Feature, connector B	Standard
Link Count	6
Wiring	T568B

Dimensions

Cable Assembly Length Range (m)	2 – 90
Cable Assembly Length Range (ft)	7 – 295

Electrical Specifications

dc Resistance, maximum	0.3 ohm
------------------------	---------

CRRRB | IP06-06BUTP-1100E-1100E

Safety Voltage Rating 300 V

Ordering Tree

123456789101112

C A A A C - 1 1 H A B B F 0 5 0

Cable Type

A

Cat 6A X10D – U/UTP (Plenum)

B

Cat 6A X10D – U/UTP (Riser)

C

Cat 6A X10D – U/UTP (LSZH)

D

Cat 6A X10D – F/UTP (Plenum)

E

Cat 6A X10D – F/UTP (Riser)

F

Cat 6A X10D – F/UTP (LSZH)

G

Cat 6 XL – U/UTP (Plenum)

H

Cat 6 XL – U/UTP (Riser)

J

Cat 6 XL – U/UTP (LSZH)

Q

Cat 6A X10D – S/FTP (LSZH)

R

Cat 6 – U/UTP Class B Rated (LSZH)

S

Cat 6A – U/UTP Class B Rated (LSZH)

Y

Cat 6A X10D SD – U/UTP (Riser)

Connector B

A

Outlet* – Single Row Standard Density

B

Outlet* – Dual Row Standard Density

C

Outlet* – Dual Row High Density

G

RJ45 Plug* – Single Row Standard Density

H

RJ45 Plug* – Dual Row Standard Density

J

RJ45 Plug* – Dual Row High Density

N

1100 Module

R

360 1100 Evolve Module

S

OneLink 2x6

T

OneLink 2x4

Link

B

6

C

8

D

12

E

16

F

18

G

24

Bundling

H

Hook-n-loop

S

Sleeving

Labeling

8

A

Generic Label

Orientation A

1

Trident Series Flat

2

Right Paired Flat

3

Right Series Flat

4

Left Paired Flat

5

Left Series Flat

6

Trident Paired Flat

A

Trident Series Angled

B

Right Paired Angled

C

Right Series Angled

D

Left Paired Angled

E

Left Series Angled

F

Trident Paired Angled

Orientation B

1

Trident Series Flat

2

Right Paired Flat

3

Right Series Flat

4

Left Paired Flat

5

Left Series Flat

6

Trident Paired Flat

A

Trident Series Angled

B

Right Paired Angled

C

Right Series Angled

D

Left Paired Angled

E

Left Series Angled

F

Trident Paired Angled

X

Not Applicable

Outlet Color

0

Not Applicable

1

Black (BK)

2

Blue (BL)

8

White (WH)

Jacket Color

8

White (WH)

C

Slate (SL)

Z

Blue (BL)

UOM

11

F

Foot

M

Meter

Length

12

XXX

Cords > 1m are authorized for use in channels and are an effective standalone method used to connect active devices

Cords < 1m are also valid elements for use in a channel or as an equipment interconnect, but due to their limited length are not guaranteed to meet component compliance requirements that were developed to assess the quality of longer cords

Environmental Specifications

Operating Temperature	-20 °C to +60 °C (-4 °F to +140 °F)
EN50575 CPR Cable EuroClass Fire Performance	B2ca
EN50575 CPR Cable EuroClass Smoke Rating	s1
EN50575 CPR Cable EuroClass Droplets Rating	d0
EN50575 CPR Cable EuroClass Acidity Rating	a1
Environmental Space	Low Smoke Zero Halogen (LSZH)
Flammability Rating	UL 94 V-0

Regulatory Compliance/Certifications

Agency	Classification
CENELEC	EN 50575 compliant, Declaration of Performance (DoP) available
CHINA-ROHS	Below maximum concentration value
ISO 9001:2015	Designed, manufactured and/or distributed under this quality management system
REACH-SVHC	Compliant as per SVHC revision on www.commscope.com/ProductCompliance
ROHS	Compliant
UK-ROHS	Compliant

Page 2 of 9

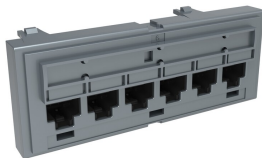
©2024 CommScope, Inc. All rights reserved. CommScope and the CommScope logo are registered trademarks of CommScope and/or its affiliates in the U.S. and other countries. For additional trademark information see <https://www.commscope.com/trademarks>. All product names, trademarks and registered trademarks are property of their respective owners. Revised: August 15, 2024

COMMScope®



Included Products

- | | | |
|---|---|---|
| 760151167
360-IPR-1100-GS3-DM6 | - | SYSTIMAX 360™ GigaSPEED XL® 1100GS3 Evolve Category 6 U/UTP Distribution Module, 6 port |
| 760241923
3071E-B WHT C6 4/23 U/UTP
W1000 | - | GigaSPEED XL® 3071E-B ETL Verified Category 6 U/UTP Cable, low smoke zero halogen, white jacket, 4 pair count, 1000 ft (305 m) length, WE TOTE® box |



SYSTIMAX 360™ GigaSPEED XL® 1100GS3 Evolve Category 6 U/UTP Distribution Module, 6 port

Product Classification

Regional Availability	Asia Australia/New Zealand EMEA Latin America North America
Portfolio	SYSTIMAX®
Product Type	Module
Product Brand	GigaSPEED XL®

General Specifications

ANSI/TIA Category	6
Cable Type	Unshielded
Color	Cool gray
Conductor Type	Solid Stranded
Intelligence Type	iPatch® ready
Modules, quantity	1
Rack Type	EIA 19 in
Rack Units	1
Termination Type	IDC
Total Ports, quantity	6
Wiring	T568A T568B

Dimensions

Height	43.688 mm 1.72 in
Width	106.68 mm 4.2 in
Depth	27.432 mm 1.08 in
Compatible Diameter Over Dielectric, maximum	1.168 mm 0.046 in
Compatible Diameter Over Dielectric, minimum	0.762 mm 0.03 in
Compatible Conductor Gauge, solid	22 AWG 24 AWG

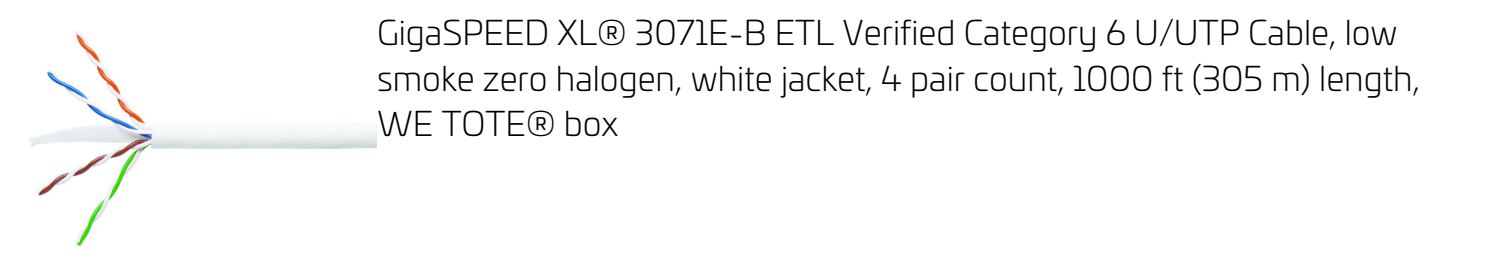
760151167 | 360-IPR-1100-GS3-DM6

Compatible Conductor Gauge, stranded		22 AWG 24 AWG
Electrical Specifications		
Current Rating at Temperature		1.5 A @ 20 °C 1.5 A @ 68 °F
Dielectric Withstand Voltage, RMS, conductive surface		1,500 Vac @ 60 Hz
Dielectric Withstand Voltage, RMS, contact-to-contact		1,000 Vac @ 60 Hz
Insulation Resistance, minimum		500 MOhm
Material Specifications		
Contact Plating Material		Precious metals
Material Type		High-impact, flame retardant, thermoplastic Powder-coated steel
Termination Contact Plating		Nickel
Mechanical Specifications		
Plug Insertion Life, minimum		750 times
Plug Insertion Life, test plug		IEC 60603-7 compliant plug
Plug Retention Force, minimum		133.447 N 30 lbf
Environmental Specifications		
Operating Temperature		-10 °C to +60 °C (+14 °F to +140 °F)
Storage Temperature		-40 °C to +70 °C (-40 °F to +158 °F)
Relative Humidity		Up to 95%, non-condensing
Flammability Rating		UL 94 V-0
Safety Standard		UL cUL
Packaging and Weights		
Packaging quantity		1
Weight, net		0.068 kg 0.15 lb
Regulatory Compliance/Certifications		
Agency	Classification	
CHINA-ROHS	Below maximum concentration value	
ISO 9001:2015	Designed, manufactured and/or distributed under this quality management system	
REACH-SVHC	Compliant as per SVHC revision on www.commscope.com/ProductCompliance	

ROHS
UK-ROHS

Compliant
Compliant





GigaSPEED XL® 3071E-B ETL Verified Category 6 U/UTP Cable, low smoke zero halogen, white jacket, 4 pair count, 1000 ft (305 m) length, WE TOTE® box

Product Classification

Regional Availability	EMEA
Portfolio	SYSTIMAX®
Product Type	Twisted pair cable
Product Brand	GigaSPEED XL®

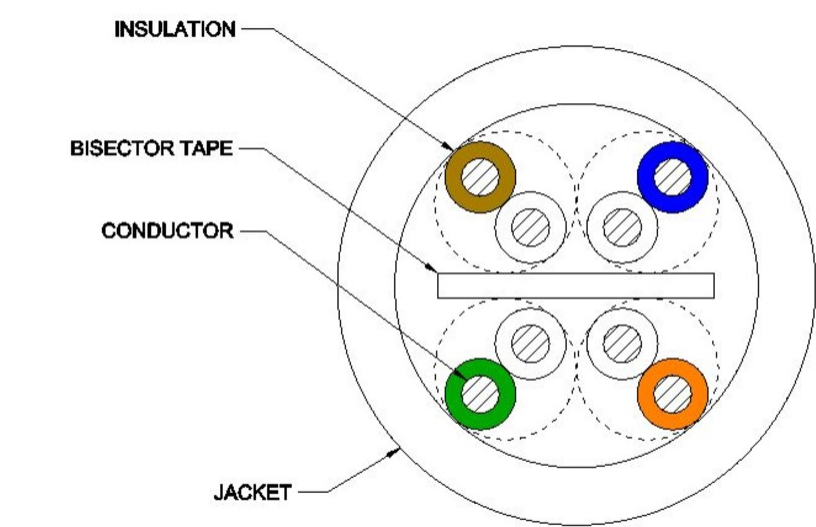
General Specifications

Product Number	3071E
ANSI/TIA Category	6
Cable Component Type	Horizontal
Cable Type	U/UTP (unshielded)
Conductor Type, singles	Solid
Conductors, quantity	8
Jacket Color	White
Pairs, quantity	4
Separator Type	Bisector
Transmission Standards	ANSI/TIA-568.2-D CENELEC EN 50288-6-1 ISO/IEC 11801 Class E

Dimensions

Cable Length	304.8 m 1000 ft
Diameter Over Insulated Conductor	1.041 mm 0.041 in
Diameter Over Jacket, nominal	5.918 mm 0.233 in
Jacket Thickness	0.559 mm 0.022 in
Conductor Gauge, singles	23 AWG

Cross Section Drawing



Electrical Specifications

dc Resistance Unbalance, maximum	5 %
dc Resistance, maximum	7.61 ohms/100 m 2.32 ohms/100 ft
Dielectric Strength, minimum	2500 Vdc
Mutual Capacitance at Frequency	5.6 nF/100 m @ 1 kHz
Nominal Velocity of Propagation (NVP)	70 %
Operating Frequency, maximum	300 MHz
Operating Voltage, maximum	80 V
Remote Powering	Fully complies with the recommendations set forth by IEEE 802.3bt (Type 4) for the safe delivery of power over LAN cable when installed according to ISO/IEC 14763-2, CENELEC EN 50174-1, CENELEC EN 50174-2 or TIA TSB-184-A
Segregation Class	c

Material Specifications

Conductor Material	Bare copper
Insulation Material	Polyolefin
Jacket Material	Low Smoke Zero Halogen (LSZH)
Separator Material	Polyolefin

Mechanical Specifications

Pulling Tension, maximum

11.34 kg | 25 lb

Environmental Specifications

Installation temperature	0 °C to +60 °C (+32 °F to +140 °F)
Operating Temperature	-20 °C to +60 °C (-4 °F to +140 °F)
Acid Gas Test Method	EN 50267-2-3
EN50575 CPR Cable EuroClass Fire Performance	B2ca
EN50575 CPR Cable EuroClass Smoke Rating	s1a
EN50575 CPR Cable EuroClass Droplets Rating	d0
EN50575 CPR Cable EuroClass Acidity Rating	a1
Environmental Space	Low Smoke Zero Halogen (LSZH)
Smoke Test Method	IEC 61034-2

Packaging and Weights

Cable weight	38.097 kg/km 25.6 lb/kft
Packaging Type	WE TOTE® box

Regulatory Compliance/Certifications

Agency	Classification
CENELEC	EN 50575 compliant, Declaration of Performance (DoP) available
CHINA-ROHS	Below maximum concentration value
ISO 9001:2015	Designed, manufactured and/or distributed under this quality management system
REACH-SVHC	Compliant as per SVHC revision on www.commscope.com/ProductCompliance
ROHS	Compliant
UK-ROHS	Compliant

