

# CRRXG | IPO6-24BUTP-1100E-BLUNT

Base Product



InstaPATCH® Cu GigaSPEED XL® U/UTP LSZH Class B2ca  
Preterminated Copper Cable, 360 1100 Evolve module to unterminated,  
24 links

This product will be discontinued on: January 31, 2025

## Product Classification

|                       |  |
|-----------------------|--|
| Regional Availability | EMEA                                       |
| Portfolio             | CommScope®                                 |
| Product Type          | Copper trunk cable assembly                |
| Product Brand         | GigaSPEED XL®   InstaPATCH® Cu             |
| Ordering Note         | Available cable jacket colors: blue, white |

## General Specifications

|                                |                        |
|--------------------------------|------------------------|
| ANSI/TIA Category              | 6                      |
| Cable Type                     | U/UTP (unshielded)     |
| Conductor Type                 | Solid                  |
| Interface, Connector A         | 360 1100 Evolve module |
| Interface Feature, connector A | Standard               |
| Interface, Connector B         | Unterminated           |
| Link Count                     | 24                     |
| Wiring                         | T568B                  |

## Dimensions

|                                  |         |
|----------------------------------|---------|
| Cable Assembly Length Range (m)  | 2 – 90  |
| Cable Assembly Length Range (ft) | 7 – 295 |

## Electrical Specifications

|                        |         |
|------------------------|---------|
| dc Resistance, maximum | 0.3 ohm |
| Safety Voltage Rating  | 300 V   |

# CRRXG | IPO6-24BUTP-1100E-BLUNT

## Ordering Tree

123456789101112

C A A A C - 1 1 H A B B F 0 5 0

Cable Type

1

A Cat 6A X10D – U/UTP (Plenum)

B Cat 6A X10D – U/UTP (Riser)

C Cat 6A X10D – U/UTP (LSZH)

D Cat 6A X10D – F/UTP (Plenum)

E Cat 6A X10D – F/UTP (Riser)

F Cat 6A X10D – F/UTP (LSZH)

G Cat 6 XL – U/UTP (Plenum)

H Cat 6 XL – U/UTP (Riser)

J Cat 6 XL – U/UTP (LSZH)

Q Cat 6A X10D – S/FTP (LSZH)

R Cat 6 – U/UTP Class B Rated (LSZH)

S Cat 6A – U/UTP Class B Rated (LSZH)

Y Cat 6A X10D SD – U/UTP (Riser)

Connector A

2

A Outlet\* – Single Row Standard Density

B Outlet\* – Dual Row Standard Density

C Outlet\* – Dual Row High Density

G RJ45 Plug\* – Single Row Standard Density

H RJ45 Plug\* – Dual Row Standard Density

J RJ45 Plug\* – Dual Row High Density

N 1100 Module

R 360 1100 Evolve Module

S OneLink 2x6

T OneLink 2x4

X Terminated

Connector B

3

A Outlet\* – Single Row Standard Density

B Outlet\* – Dual Row Standard Density

C Outlet\* – Dual Row High Density

G RJ45 Plug\* – Single Row Standard Density

H RJ45 Plug\* – Dual Row Standard Density

J RJ45 Plug\* – Dual Row High Density

N 1100 Module

R 360 1100 Evolve Module

S OneLink 2x6

T OneLink 2x4

Orientation A

5

1 Trident Series Flat

2 Right Paired Flat

3 Right Series Flat

4 Left Paired Flat

5 Left Series Flat

6 Trident Paired Flat

A Trident Series Angled

B Right Paired Angled

C Right Series Angled

D Left Paired Angled

E Left Series Angled

F Trident Paired Angled

Orientation B

6

1 Trident Series Flat

2 Right Paired Flat

3 Right Series Flat

4 Left Paired Flat

5 Left Series Flat

6 Trident Paired Flat

A Trident Series Angled

B Right Paired Angled

C Right Series Angled

D Left Paired Angled

E Left Series Angled

F Trident Paired Angled

X Not Applicable

Link

4

B 6

C 8

D 12

E 16

F 18

G 24

Outlet Color

9

0 Not Applicable

1 Black (BK)

2 Blue (BL)

8 White (WH)

UOM

11

F Foot

M Meter

Length

12

XXX

Bundling

7

H Hook-n-loop

S Sleeving

Jacket Color

10

B White (WH)

C Slate (SL)

Z Blue (BL)

Labeling

8

A Generic Label

Cords > 1m are authorized for use in channels and are an effective standalone method used to connect active devices

Cords < 1m are also valid elements for use in a channel or as an equipment interconnect, but due to their limited length are not guaranteed to meet component compliance requirements that were developed to assess the quality of longer cords

## Environmental Specifications

|  |                                     |
|--|-------------------------------------|
| Operating Temperature                        | -20 °C to +60 °C (-4 °F to +140 °F) |
| EN50575 CPR Cable EuroClass Fire Performance | B2ca                                |
| EN50575 CPR Cable EuroClass Smoke Rating     | s1                                  |
| EN50575 CPR Cable EuroClass Droplets Rating  | d0                                  |
| EN50575 CPR Cable EuroClass Acidity Rating   | a1                                  |
| Environmental Space                          | Low Smoke Zero Halogen (LSZH)       |
| Flammability Rating                          | UL 94 V-0                           |

## Regulatory Compliance/Certifications

| Agency        | Classification   |
|---------------|--|
| CENELEC       | EN 50575 compliant, Declaration of Performance (DoP) available   |
| CHINA-ROHS    | Below maximum concentration value  |
| ISO 9001:2015 | Designed, manufactured and/or distributed under this quality management system   |
| REACH-SVHC    | Compliant as per SVHC revision on <a href="http://www.commscope.com/ProductCompliance">www.commscope.com/ProductCompliance</a> |
| ROHS          | Compliant  |
| UK-ROHS       | Compliant  |

Page 2 of 9

©2024 CommScope, Inc. All rights reserved. CommScope and the CommScope logo are registered trademarks of CommScope and/or its affiliates in the U.S. and other countries. For additional trademark information see <https://www.commscope.com/trademarks>. All product names, trademarks and registered trademarks are property of their respective owners. Revised: August 15, 2024

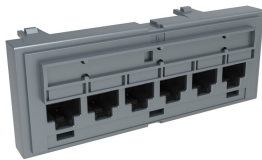
COMMScope®

# CRRXG | IP06-24BUTP-1100E-BLUNT

---

## Included Products

- |  |   |   |
|--|---|---|
| 760151167<br>360-IPR-1100-GS3-DM6            | – | SYSTIMAX 360™ GigaSPEED XL® 1100GS3 Evolve Category 6 U/UTP Distribution Module, 6 port   |
| 760241923<br>3071E-B WHT C6 4/23 U/UTP W1000 | – | GigaSPEED XL® 3071E-B ETL Verified Category 6 U/UTP Cable, low smoke zero halogen, white jacket, 4 pair count, 1000 ft (305 m) length, WE TOTE® box |



SYSTIMAX 360™ GigaSPEED XL® 1100GS3 Evolve Category 6 U/UTP Distribution Module, 6 port

Product Classification

|                       |   |
|-----------------------|---|
| Regional Availability | Asia   Australia/New Zealand   EMEA   Latin America   North America |
| Portfolio             | SYSTIMAX®   |
| Product Type          | Module  |
| Product Brand         | GigaSPEED XL®   |

General Specifications

|                       |                  |
|-----------------------|------------------|
| ANSI/TIA Category     | 6                |
| Cable Type            | Unshielded       |
| Color                 | Cool gray        |
| Conductor Type        | Solid   Stranded |
| Intelligence Type     | iPatch® ready    |
| Modules, quantity     | 1                |
| Rack Type             | EIA 19 in        |
| Rack Units            | 1                |
| Termination Type      | IDC              |
| Total Ports, quantity | 6                |
| Wiring                | T568A   T568B    |

Dimensions

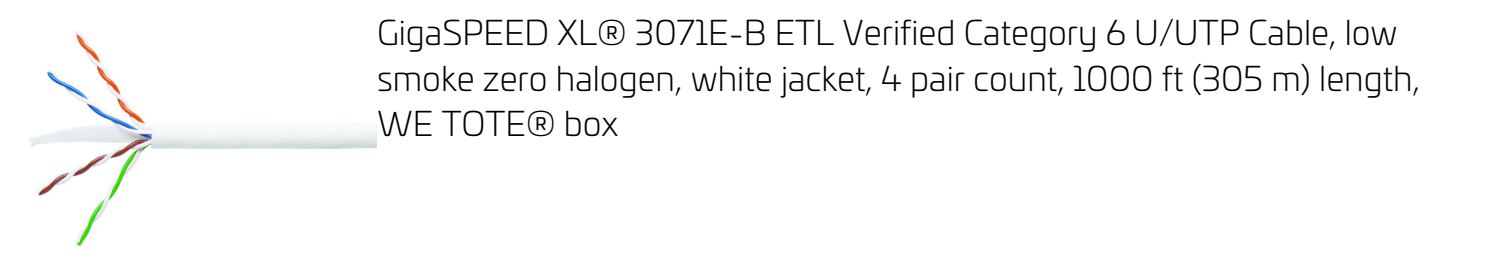
|  |                     |
|--|---------------------|
| Height                                       | 43.688 mm   1.72 in |
| Width  | 106.68 mm   4.2 in  |
| Depth  | 27.432 mm   1.08 in |
| Compatible Diameter Over Dielectric, maximum | 1.168 mm   0.046 in |
| Compatible Diameter Over Dielectric, minimum | 0.762 mm   0.03 in  |
| Compatible Conductor Gauge, solid            | 22 AWG   24 AWG     |

# 760151167 | 360-IPR-1100-GS3-DM6

|   |   |   |
|---|---|---|
| Compatible Conductor Gauge, stranded                  |   | 22 AWG   24 AWG   |
| Electrical Specifications                             |   |   |
| Current Rating at Temperature                         |   | 1.5 A @ 20 °C   1.5 A @ 68 °F                                     |
| Dielectric Withstand Voltage, RMS, conductive surface |   | 1,500 Vac @ 60 Hz   |
| Dielectric Withstand Voltage, RMS, contact-to-contact |   | 1,000 Vac @ 60 Hz   |
| Insulation Resistance, minimum                        |   | 500 MOhm  |
| Material Specifications                               |   |   |
| Contact Plating Material                              |   | Precious metals   |
| Material Type   |   | High-impact, flame retardant, thermoplastic   Powder-coated steel |
| Termination Contact Plating                           |   | Nickel  |
| Mechanical Specifications                             |   |   |
| Plug Insertion Life, minimum                          |   | 750 times   |
| Plug Insertion Life, test plug                        |   | IEC 60603-7 compliant plug  |
| Plug Retention Force, minimum                         |   | 133.447 N   30 lbf  |
| Environmental Specifications                          |   |   |
| Operating Temperature                                 |   | -10 °C to +60 °C (+14 °F to +140 °F)                              |
| Storage Temperature                                   |   | -40 °C to +70 °C (-40 °F to +158 °F)                              |
| Relative Humidity                                     |   | Up to 95%, non-condensing   |
| Flammability Rating                                   |   | UL 94 V-0   |
| Safety Standard                                       |   | UL   cUL  |
| Packaging and Weights                                 |   |   |
| Packaging quantity                                    |   | 1   |
| Weight, net   |   | 0.068 kg   0.15 lb  |
| Regulatory Compliance/Certifications                  |   |   |
| Agency  | Classification  |   |
| CHINA-ROHS  | Below maximum concentration value   |   |
| ISO 9001:2015   | Designed, manufactured and/or distributed under this quality management system  |   |
| REACH-SVHC  | Compliant as per SVHC revision on <a href="https://www.commscope.com/ProductCompliance">www.commscope.com/ProductCompliance</a> |   |

|         |           |
|---------|-----------|
| ROHS    | Compliant |
| UK-ROHS | Compliant |





Product Classification

|                       |                    |
|-----------------------|--------------------|
| Regional Availability | EMEA               |
| Portfolio             | SYSTIMAX®          |
| Product Type          | Twisted pair cable |
| Product Brand         | GigaSPEED XL®      |

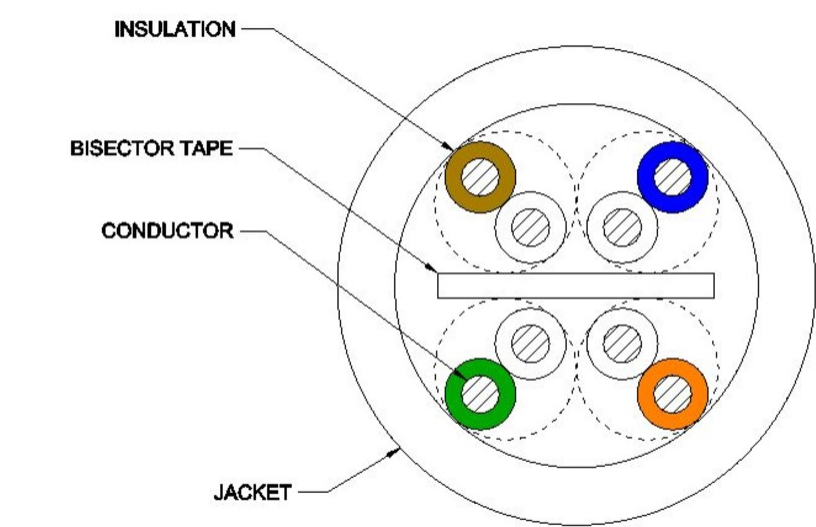
General Specifications

|                         |   |
|-------------------------|---|
| Product Number          | 3071E   |
| ANSI/TIA Category       | 6   |
| Cable Component Type    | Horizontal  |
| Cable Type              | U/UTP (unshielded)  |
| Conductor Type, singles | Solid   |
| Conductors, quantity    | 8   |
| Jacket Color            | White   |
| Pairs, quantity         | 4   |
| Separator Type          | Bisector  |
| Transmission Standards  | ANSI/TIA-568.2-D   CENELEC EN 50288-6-1   ISO/IEC 11801 Class E |

Dimensions

|                                   |                     |
|-----------------------------------|---------------------|
| Cable Length                      | 304.8 m   1000 ft   |
| Diameter Over Insulated Conductor | 1.041 mm   0.041 in |
| Diameter Over Jacket, nominal     | 5.918 mm   0.233 in |
| Jacket Thickness                  | 0.559 mm   0.022 in |
| Conductor Gauge, singles          | 23 AWG              |

Cross Section Drawing



Electrical Specifications

|                                       |   |
|---------------------------------------|---|
| dc Resistance Unbalance, maximum      | 5 %   |
| dc Resistance, maximum                | 7.61 ohms/100 m   2.32 ohms/100 ft  |
| Dielectric Strength, minimum          | 2500 Vdc  |
| Mutual Capacitance at Frequency       | 5.6 nF/100 m @ 1 kHz  |
| Nominal Velocity of Propagation (NVP) | 70 %  |
| Operating Frequency, maximum          | 300 MHz   |
| Operating Voltage, maximum            | 80 V  |
| Remote Powering                       | Fully complies with the recommendations set forth by IEEE 802.3bt (Type 4) for the safe delivery of power over LAN cable when installed according to ISO/IEC 14763-2, CENELEC EN 50174-1, CENELEC EN 50174-2 or TIA TSB-184-A |
| Segregation Class                     | c   |

Material Specifications

|                     |                               |
|---------------------|-------------------------------|
| Conductor Material  | Bare copper                   |
| Insulation Material | Polyolefin                    |
| Jacket Material     | Low Smoke Zero Halogen (LSZH) |
| Separator Material  | Polyolefin                    |



### Mechanical Specifications

**Pulling Tension, maximum**

11.34 kg | 25 lb

### Environmental Specifications

|   |                                     |
|---|-------------------------------------|
| <b>Installation temperature</b>                     | 0 °C to +60 °C (+32 °F to +140 °F)  |
| <b>Operating Temperature</b>                        | -20 °C to +60 °C (-4 °F to +140 °F) |
| <b>Acid Gas Test Method</b>                         | EN 50267-2-3                        |
| <b>EN50575 CPR Cable EuroClass Fire Performance</b> | B2ca                                |
| <b>EN50575 CPR Cable EuroClass Smoke Rating</b>     | s1a                                 |
| <b>EN50575 CPR Cable EuroClass Droplets Rating</b>  | d0                                  |
| <b>EN50575 CPR Cable EuroClass Acidity Rating</b>   | a1                                  |
| <b>Environmental Space</b>                          | Low Smoke Zero Halogen (LSZH)       |
| <b>Smoke Test Method</b>                            | IEC 61034-2                         |

### Packaging and Weights

|                       |                            |
|-----------------------|----------------------------|
| <b>Cable weight</b>   | 38.097 kg/km   25.6 lb/kft |
| <b>Packaging Type</b> | WE TOTE® box               |

### Regulatory Compliance/Certifications

| Agency        | Classification   |
|---------------|--|
| CENELEC       | EN 50575 compliant, Declaration of Performance (DoP) available   |
| CHINA-ROHS    | Below maximum concentration value  |
| ISO 9001:2015 | Designed, manufactured and/or distributed under this quality management system   |
| REACH-SVHC    | Compliant as per SVHC revision on <a href="http://www.commscope.com/ProductCompliance">www.commscope.com/ProductCompliance</a> |
| ROHS          | Compliant  |
| UK-ROHS       | Compliant  |

