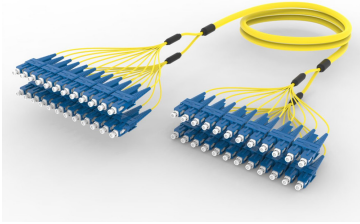


FLWSCSCAF

Base Product



Singlemode SC/UPC to SC/UPC 24-Fiber InstaPATCH® 360 Ruggedized Fanout Cable, Plenum

Product Classification

Regional Availability

Asia | Australia/New Zealand | China | Europe | India | Latin America | Middle East/Africa | North America

Portfolio

CommScope®

Product Type

Ruggedized fanout

Product Brand

SYSTIMAX InstaPATCH® 360

Ordering Note

For lengths greater than 999 ft (304 m), orders must be in meters | Minimum length may vary based on cable configuration

General Specifications

Color, boot A	Blue
Color, connector A	Blue
Color, boot B	Blue
Color, connector B	Blue
Construction Type	Stranded
Furcation Color	Yellow
Interface, Connector A	SC/UPC
Interface, Connector B	SC/UPC
Jacket Color	Yellow
Fibers per Subunit, quantity	12
Total Fibers, quantity	24

Dimensions

Cable Assembly Length Range (m)	3 – 305
Cable Assembly Length Range (ft)	8 – 999

Ordering Tree

FLWSCSCAF

Included Products

- 460125768 – TeraSPEED® Pre-Radiused SC Connector for 1.6 mm Fiber Cordage, Duplex, Singlemode
- 760038315 – Fiber indoor cable, TeraSPEED® Plenum for MPO Trunks, 24 fiber with 12 fiber subunits, Singlemode G.652.D and G.657.A1, Feet jacket marking, Yellow jacket color
- P-024-MP-8W-F12YL

460125768

TeraSPEED® Pre-Radiused SC Connector for 1.6 mm Fiber Cordage, Duplex, Singlemode

Product Classification

Regional Availability	Asia Australia/New Zealand EMEA Latin America North America
Portfolio	CommScope®
Product Type	Fiber connector
Product Brand	TeraSPEED®

General Specifications

Body Style	Duplex
Color	Blue
Ferrule Geometry	Pre-radiused
Interface	SC/UPC

Dimensions

Length	56 mm 2.205 in
Compatible Cable Diameter	1.6 mm 0.063 in

Material Specifications

Ferrule Material	Zirconia
-------------------------	----------

Mechanical Specifications

Cable Retention Strength, maximum	11.24 lb @ 0 °
--	----------------

Optical Specifications

Fiber Type	G.652.D and G.657.A1, TeraSPEED® OS2
Insertion Loss Change, mating	0.3 dB
Optical Components Standard	ANSI/TIA-568-C.3
Insertion Loss Change, temperature	0.3 dB
Insertion Loss, typical	0.3 dB
Return Loss, minimum	55 dB

Packaging and Weights

Packaging quantity 2

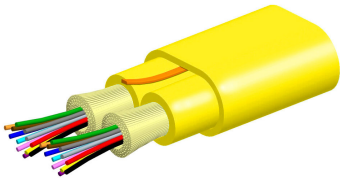
Regulatory Compliance/Certifications

Agency	Classification
ISO 9001:2015	Designed, manufactured and/or distributed under this quality management system

* Footnotes

Insertion Loss Change, mating TIA-568: Maximum insertion loss change after 500 matings

Insertion Loss Change, temperature Maximum insertion loss change from -10 °C to +60 °C (+14 °F to +140 °F)



Fiber indoor cable, TeraSPEED® Plenum for MPO Trunks, 24 fiber with 12 fiber subunits, Singlemode G.652.D and G.657.A1, Feet jacket marking, Yellow jacket color

Product Classification

Regional Availability	Asia Australia/New Zealand Latin America Middle East /Africa North America
Portfolio	CommScope®
Product Type	Fiber indoor cable
Product Series	P-MP

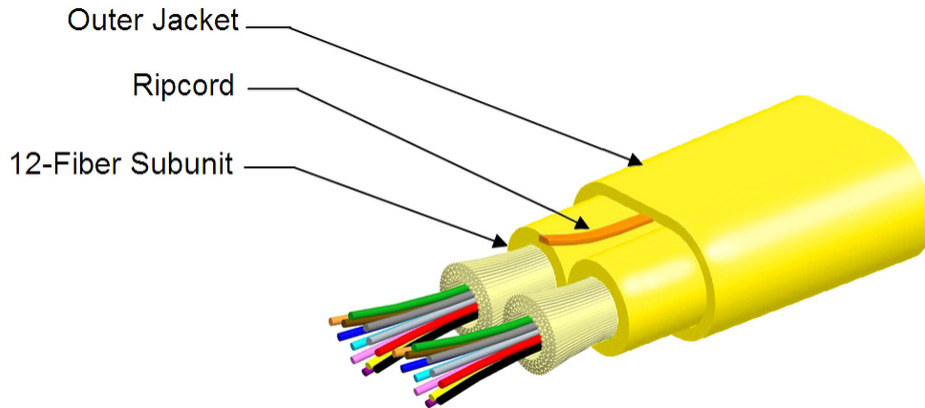
General Specifications

Cable Type	MPO trunk cable
Construction Type	Non-armored
Subunit Type	Gel-free
Jacket Color	Yellow
Jacket Marking	Feet
Subunit, quantity	2
Fibers per Subunit, quantity	12
Total Fiber Count	24

Dimensions

Height Over Jacket	3.9 mm 0.154 in
Width Over Jacket	6.9 mm 0.272 in
Buffer Tube/Subunit Diameter	3 mm 0.118 in

Representative Image



Mechanical Specifications

Minimum Bend Radius, loaded	58 mm 2.283 in
Minimum Bend Radius, unloaded	39 mm 1.535 in
Tensile Load, long term, maximum	200 N 44.962 lbf
Tensile Load, short term, maximum	667 N 149.948 lbf
Compression	10 N/mm 57.101 lb/in
Compression Test Method	FOTP-41 IEC 60794-1 E3
Flex	300 cycles
Flex Test Method	FOTP-104 IEC 60794-1 E6
Impact	0.74 N-m 6.55 in lb
Impact Test Method	FOTP-25 IEC 60794-1 E4
Strain	See long and short term tensile loads
Strain Test Method	FOTP-33 IEC 60794-1 E1
Twist	10 cycles
Twist Test Method	FOTP-85 IEC 60794-1 E7
Vertical Rise, maximum	500 m 1,640.42 ft

Optical Specifications

Fiber Type	G.652.D and G.657.A1, TeraSPEED® OS2 OS2
-------------------	--

Environmental Specifications

Installation temperature	0 °C to +70 °C (+32 °F to +158 °F)
---------------------------------	------------------------------------

760038315 | P-024-MP-8W-F12YL

Operating Temperature	0 °C to +70 °C (+32 °F to +158 °F)
Storage Temperature	-40 °C to +70 °C (-40 °F to +158 °F)
Cable Qualification Standards	ANSI/ICEA S-83-596 Telcordia GR-409
Environmental Space	Plenum
Flame Test Listing	NEC OFNP (ETL) and c(ETL)
Flame Test Method	NFPA 130 NFPA 262

Environmental Test Specifications

Heat Age	0 °C to +85 °C (+32 °F to +185 °F)
Heat Age Test Method	IEC 60794-1 F9
Low High Bend	0 °C to +70 °C (+32 °F to +158 °F)
Low High Bend Test Method	FOTP-37 IEC 60794-1 E11
Temperature Cycle	0 °C to +70 °C (+32 °F to +158 °F)
Temperature Cycle Test Method	FOTP-3 IEC 60794-1 F1

Packaging and Weights

Cable weight	29 kg/km 19.487 lb/kft
---------------------	--------------------------

Regulatory Compliance/Certifications

Agency	Classification
CHINA-ROHS	Below maximum concentration value
ISO 9001:2015	Designed, manufactured and/or distributed under this quality management system
REACH-SVHC	Compliant as per SVHC revision on www.commscope.com/ProductCompliance
ROHS	Compliant
UK-ROHS	Compliant



* Footnotes

Operating Temperature Specification applicable to non-terminated bulk fiber cable