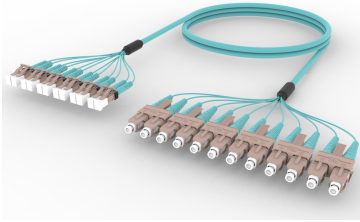


# FLXLCSCAD

## Base Product



OM4 LC/UPC to SC/UPC 12-Fiber InstaPATCH® 360 Ruggedized Fanout Cable, Plenum

## Product Classification

### Regional Availability

Asia | Australia/New Zealand | China | Europe | India | Latin America | Middle East/Africa | North America

### Portfolio

CommScope®

### Product Type

Ruggedized fanout

### Product Brand

SYSTIMAX InstaPATCH® 360

### Ordering Note

For lengths greater than 999 ft (304 m), orders must be in meters | Minimum length may vary based on cable configuration

## General Specifications

<b>Color, boot A</b>	Aqua
<b>Color, connector A</b>	Beige
<b>Color, boot B</b>	Aqua
<b>Color, connector B</b>	Beige
<b>Construction Type</b>	Stranded
<b>Furcation Color</b>	Aqua
<b>Interface, Connector A</b>	LC/UPC
<b>Interface, Connector B</b>	SC/UPC
<b>Jacket Color</b>	Aqua
<b>Fibers per Subunit, quantity</b>	12
<b>Total Fibers, quantity</b>	12

## Dimensions

<b>Cable Assembly Length Range (m)</b>	3 – 305
<b>Cable Assembly Length Range (ft)</b>	8 – 999

## Ordering Tree





## Included Products

- |                                |   |   |
|--------------------------------|---|---|
| 460125750                      | - | LazrSPEED® Pre-Radiused SC Connector for 1.6 mm Fiber Cordage, Duplex, multimode                                      |
| 760051656<br>P-012-MP-5K-F12AQ | - | Fiber indoor cable, LazrSPEED® Plenum for MPO Trunks, 12 fiber, Multimode OM4, Feet jacket marking, Aqua jacket color |
| 860637378                      | - | LazrSPEED® Elite LC Connector duplex for 1.6 mm Fiber, multimode  |

## LazrSPEED® Pre-Radiused SC Connector for 1.6 mm Fiber Cordage, Duplex, multimode

### Product Classification

<b>Regional Availability</b>	Asia   Australia/New Zealand   EMEA   Latin America   North America
<b>Portfolio</b>	CommScope®
<b>Product Type</b>	Fiber connector
<b>Product Brand</b>	LazrSPEED®

### General Specifications

<b>Body Style</b>	Duplex
<b>Color</b>	Beige
<b>Ferrule Geometry</b>	Pre-radiused
<b>Interface</b>	SC/UPC

### Dimensions

<b>Length</b>	56 mm   2.205 in
<b>Compatible Cable Diameter</b>	1.6 mm   0.063 in

### Material Specifications

<b>Ferrule Material</b>	Zirconia
-------------------------	----------

### Mechanical Specifications

<b>Cable Retention Strength, maximum</b>	11.24 lb @ 0 °
--	----------------

### Optical Specifications

<b>Fiber Mode</b>	Multimode
<b>Insertion Loss Change, mating</b>	0.3 dB
<b>Optical Components Standard</b>	ANSI/TIA-568-C.3
<b>Insertion Loss Change, temperature</b>	0.3 dB
<b>Insertion Loss, typical</b>	0.3 dB
<b>Insertion Loss, ULL, maximum</b>	0.15 dB
<b>Return Loss, minimum</b>	25 dB

# 460125750

---

## Packaging and Weights

**Packaging quantity** 2

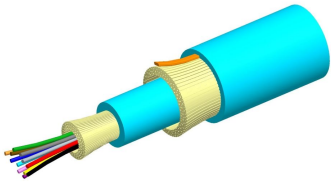
## Regulatory Compliance/Certifications

<b>Agency</b>	<b>Classification</b>
ISO 9001:2015	Designed, manufactured and/or distributed under this quality management system

## \* Footnotes

**Insertion Loss Change, mating** TIA-568: Maximum insertion loss change after 500 matings

**Insertion Loss Change, temperature** Maximum insertion loss change from -10 °C to +60 °C (+14 °F to +140 °F)



Fiber indoor cable, LazrSPEED® Plenum for MPO Trunks, 12 fiber, Multimode OM4, Feet jacket marking, Aqua jacket color

## Product Classification

<b>Regional Availability</b>	Asia   Australia/New Zealand   Latin America   Middle East /Africa   North America
<b>Portfolio</b>	CommScope®
<b>Product Type</b>	Fiber indoor cable
<b>Product Series</b>	P-MP

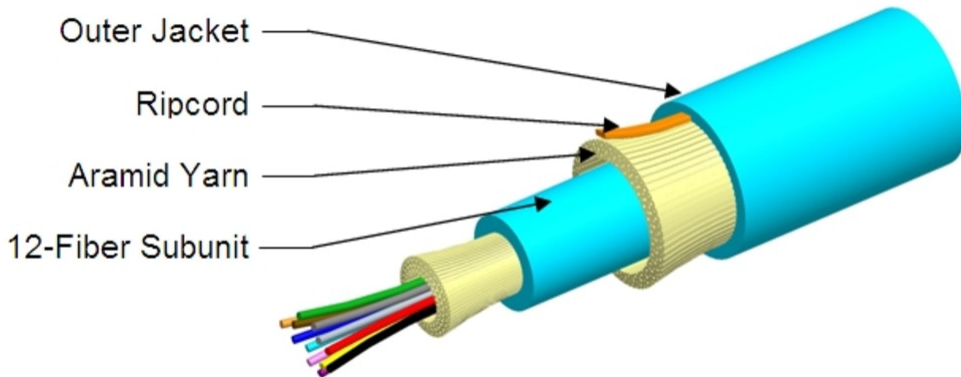
## General Specifications

<b>Cable Type</b>	MPO trunk cable
<b>Construction Type</b>	Non-armored
<b>Subunit Type</b>	Gel-free
<b>Jacket Color</b>	Aqua
<b>Jacket Marking</b>	Feet
<b>Total Fiber Count</b>	12

## Dimensions

<b>Buffer Tube/Subunit Diameter</b>	3 mm   0.118 in
<b>Diameter Over Jacket</b>	4.9 mm   0.193 in

## Representative Image



## Mechanical Specifications

<b>Minimum Bend Radius, loaded</b>	74 mm   2.913 in
<b>Minimum Bend Radius, unloaded</b>	49 mm   1.929 in
<b>Tensile Load, long term, maximum</b>	200 N   44.962 lbf
<b>Tensile Load, short term, maximum</b>	667 N   149.948 lbf
<b>Compression</b>	10 N/mm   57.101 lb/in
<b>Compression Test Method</b>	FOTP-41   IEC 60794-1 E3
<b>Flex</b>	300 cycles
<b>Flex Test Method</b>	FOTP-104   IEC 60794-1 E6
<b>Impact</b>	0.74 N-m   6.55 in lb
<b>Impact Test Method</b>	FOTP-25   IEC 60794-1 E4
<b>Strain</b>	See long and short term tensile loads
<b>Strain Test Method</b>	FOTP-33   IEC 60794-1 E1
<b>Twist</b>	10 cycles
<b>Twist Test Method</b>	FOTP-85   IEC 60794-1 E7
<b>Vertical Rise, maximum</b>	500 m   1,640.42 ft

## Optical Specifications

<b>Fiber Type</b>	OM4, LazrSPEED® 550   OM4, LazrSPEED® 550
-------------------	---

## Environmental Specifications

<b>Installation temperature</b>	0 °C to +70 °C (+32 °F to +158 °F)
---------------------------------	------------------------------------

# 760051656 | P-012-MP-5K-F12AQ

<b>Operating Temperature</b>	0 °C to +70 °C (+32 °F to +158 °F)
<b>Storage Temperature</b>	-40 °C to +70 °C (-40 °F to +158 °F)
<b>Cable Qualification Standards</b>	ANSI/ICEA S-83-596   Telcordia GR-409
<b>Environmental Space</b>	Plenum
<b>Flame Test Listing</b>	NEC OFNP (ETL) and c(ETL)
<b>Flame Test Method</b>	NFPA 130   NFPA 262

## Environmental Test Specifications

<b>Heat Age</b>	0 °C to +85 °C (+32 °F to +185 °F)
<b>Heat Age Test Method</b>	IEC 60794-1 F9
<b>Low High Bend</b>	0 °C to +70 °C (+32 °F to +158 °F)
<b>Low High Bend Test Method</b>	FOTP-37   IEC 60794-1 E11
<b>Temperature Cycle</b>	0 °C to +70 °C (+32 °F to +158 °F)
<b>Temperature Cycle Test Method</b>	FOTP-3   IEC 60794-1 F1

## Packaging and Weights

<b>Cable weight</b>	23 kg/km   15.455 lb/kft
---------------------	--------------------------

## Regulatory Compliance/Certifications

<b>Agency</b>	<b>Classification</b>
CHINA-ROHS	Below maximum concentration value
ISO 9001:2015	Designed, manufactured and/or distributed under this quality management system
REACH-SVHC	Compliant as per SVHC revision on <a href="http://www.commscope.com/ProductCompliance">www.commscope.com/ProductCompliance</a>
ROHS	Compliant
UK-ROHS	Compliant



## \* Footnotes

**Operating Temperature** Specification applicable to non-terminated bulk fiber cable



LazrSPEED® Elite LC Connector duplex for 1.6 mm Fiber, multimode

## Product Classification

<b>Regional Availability</b>	Asia   Australia/New Zealand   EMEA   Latin America   North America
<b>Portfolio</b>	CommScope®
<b>Product Type</b>	Fiber connector
<b>Product Brand</b>	LazrSPEED®

## General Specifications

<b>Body Style</b>	Duplex
<b>Color</b>	Beige
<b>Ferrule Geometry</b>	Pre-radiused
<b>Interface</b>	LC/UPC

## Dimensions

<b>Length</b>	50.3 mm   1.98 in
<b>Compatible Cable Diameter</b>	1.6 mm   0.063 in

## Material Specifications

<b>Ferrule Material</b>	Zirconia
-------------------------	----------

## Mechanical Specifications

<b>Cable Retention Strength, maximum</b>	11.24 lb @ 0 °
--	----------------

## Optical Specifications

<b>Fiber Mode</b>	Multimode
<b>Optical Components Standard</b>	ANSI/TIA-568-C.3
<b>Insertion Loss, ULL, maximum</b>	0.15 dB
<b>Return Loss, minimum</b>	35 dB

## Packaging and Weights

<b>Packaging quantity</b>	2
---------------------------	---

## Regulatory Compliance/Certifications

# 860637378

---

**Agency****Classification**

CHINA-ROHS

Below maximum concentration value

REACH-SVHC

Compliant as per SVHC revision on [www.commscope.com/ProductCompliance](http://www.commscope.com/ProductCompliance)

ROHS

Compliant

UK-ROHS

Compliant

