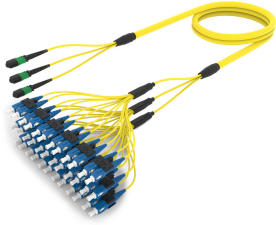


# ULGMPSCCG

## Base Product



Ultra Low Loss ULL TeraSPEED® MPO(Unpinned) to SC/UPC Ruggedized fanout Cable, 36-Fiber, Plenum, 12 fiber PmP 2.0 mm Dca

## Product Classification

### Regional Availability

Asia | Australia/New Zealand | Europe | Latin America | Middle East/Africa | North America

### Portfolio

CommScope®

### Product Type

Ruggedized fanout

### Product Brand

SYSTIMAX ULL

### Ordering Note

For additional jacket colors, please contact a CommScope Sales Representative | For lengths greater than 999 ft (304 m), orders must be in meters | Minimum length may vary based on cable configuration

## General Specifications

### Color, boot A

Black

### Color, connector A

Green

### Color, boot B

Blue

### Color, connector B

Blue

### Construction Type

Stranded

### Furcation Color

Yellow

### Interface, Connector A

MPO-12/APC Female

### Interface, Connector B

SC/UPC

### Interface Feature, connector B

ULL

### Jacket Color

Yellow

### Polarity

Method B Enhanced (ULL)

### Fibers per Subunit, quantity

12

### Total Fibers, quantity

36

## Dimensions

### Cable Assembly Length Range (m)

3 – 999

### Cable Assembly Length Range (ft)

10 – 999

## Ordering Tree



## Optical Specifications

|                   |                      |
|-------------------|----------------------|
| <b>Fiber Mode</b> | Singlemode           |
| <b>Fiber Type</b> | G.657.A2, TeraSPEED® |

## Environmental Specifications

|   |                                      |
|---|--------------------------------------|
| <b>Operating Temperature</b>                        | -10 °C to +60 °C (+14 °F to +140 °F) |
| <b>EN50575 CPR Cable EuroClass Fire Performance</b> | Dca                                  |
| <b>Environmental Space</b>                          | Indoor   Plenum                      |

## Regulatory Compliance/Certifications

| Agency        | Classification   |
|---------------|--|
| ANATEL        | Compliant  |
| ISO 9001:2015 | Designed, manufactured and/or distributed under this quality management system |



## Included Products

- |                                    |   |   |
|------------------------------------|---|---|
| 760242053<br>P-036-MP-8G-F12YL/20T | - | Fiber indoor cable, Plenum MPO Trunk, 36 fiber multi-unit with 12 fiber subunits, Singlemode G. 657.A2/B2, Feet jacket marking, Yellow jacket color |
| 860655893                          | - | SC/UPC Connector, Singlemode, Blue A2   |
| 860659016                          | - | MPO12, ULL, FEMALE, SM, GREEN, 2MM  |



Fiber indoor cable, Plenum MPO Trunk, 36 fiber multi-unit with 12 fiber subunits, Singlemode G.657.A2/B2, Feet jacket marking, Yellow jacket color

## Product Classification

|                              |  |
|------------------------------|--|
| <b>Regional Availability</b> | Asia   Australia/New Zealand   Latin America   Middle East /Africa   North America |
| <b>Portfolio</b>             | CommScope®   |
| <b>Product Type</b>          | Fiber indoor cable   |
| <b>Product Series</b>        | P-MP   |

## General Specifications

|                                     |                 |
|-------------------------------------|-----------------|
| <b>Cable Type</b>                   | MPO trunk cable |
| <b>Construction Type</b>            | Non-armored     |
| <b>Subunit Type</b>                 | Gel-free        |
| <b>Filler, quantity</b>             | 1               |
| <b>Jacket Color</b>                 | Yellow          |
| <b>Jacket Marking</b>               | Feet            |
| <b>Subunit, quantity</b>            | 3               |
| <b>Fibers per Subunit, quantity</b> | 12              |
| <b>Total Fiber Count</b>            | 36              |

## Dimensions

|                                     |                   |
|-------------------------------------|-------------------|
| <b>Buffer Tube/Subunit Diameter</b> | 2 mm   0.079 in   |
| <b>Diameter Over Jacket</b>         | 7.7 mm   0.303 in |

## Representative Image



## Mechanical Specifications

|  |                                       |
|--|---------------------------------------|
| <b>Minimum Bend Radius, loaded</b>       | 116 mm   4.567 in                     |
| <b>Minimum Bend Radius, unloaded</b>     | 77 mm   3.031 in                      |
| <b>Tensile Load, long term, maximum</b>  | 200 N   44.962 lbf                    |
| <b>Tensile Load, short term, maximum</b> | 667 N   149.948 lbf                   |
| <b>Compression</b>                       | 10 N/mm   57.101 lb/in                |
| <b>Compression Test Method</b>           | FOTP-41   IEC 60794-1 E3              |
| <b>Flex</b>                              | 300 cycles                            |
| <b>Flex Test Method</b>                  | FOTP-104   IEC 60794-1 E6             |
| <b>Impact</b>                            | 0.74 N-m   6.55 in lb                 |
| <b>Impact Test Method</b>                | FOTP-25   IEC 60794-1 E4              |
| <b>Strain</b>                            | See long and short term tensile loads |
| <b>Strain Test Method</b>                | FOTP-33   IEC 60794-1 E1              |
| <b>Twist</b>                             | 10 cycles                             |
| <b>Twist Test Method</b>                 | FOTP-85   IEC 60794-1 E7              |
| <b>Vertical Rise, maximum</b>            | 320 m   1,049.869 ft                  |

## Optical Specifications

|                   |                           |
|-------------------|---------------------------|
| <b>Fiber Type</b> | G.657.A2/B2   G.657.A2/B2 |
|-------------------|---------------------------|

## Environmental Specifications

|                                 |                                      |
|---------------------------------|--------------------------------------|
| <b>Installation temperature</b> | 0 °C to +70 °C (+32 °F to +158 °F)   |
| <b>Operating Temperature</b>    | 0 °C to +70 °C (+32 °F to +158 °F)   |
| <b>Storage Temperature</b>      | -40 °C to +70 °C (-40 °F to +158 °F) |

# 760242053 | P-036-MP-8G-F12YL/20T

---

|                                      |                                       |
|--------------------------------------|---------------------------------------|
| <b>Cable Qualification Standards</b> | ANSI/ICEA S-83-596   Telcordia GR-409 |
| <b>Environmental Space</b>           | Plenum                                |
| <b>Flame Test Listing</b>            | NEC OFNP (ETL) and c(ETL)             |
| <b>Flame Test Method</b>             | NFPA 130   NFPA 262                   |

## Environmental Test Specifications

|                                      |                                    |
|--------------------------------------|------------------------------------|
| <b>Heat Age</b>                      | 0 °C to +85 °C (+32 °F to +185 °F) |
| <b>Heat Age Test Method</b>          | IEC 60794-1 F9                     |
| <b>Low High Bend</b>                 | 0 °C to +70 °C (+32 °F to +158 °F) |
| <b>Low High Bend Test Method</b>     | FOTP-37   IEC 60794-1 E11          |
| <b>Temperature Cycle</b>             | 0 °C to +70 °C (+32 °F to +158 °F) |
| <b>Temperature Cycle Test Method</b> | FOTP-3   IEC 60794-1 F1            |

## Packaging and Weights

|                     |                          |
|---------------------|--------------------------|
| <b>Cable weight</b> | 64 kg/km   43.006 lb/kft |
|---------------------|--------------------------|

## Regulatory Compliance/Certifications

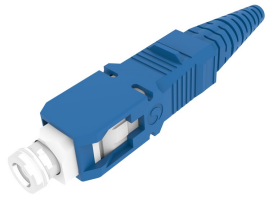
| <b>Agency</b> | <b>Classification</b>  |
|---------------|--|
| ISO 9001:2015 | Designed, manufactured and/or distributed under this quality management system |

## \* Footnotes

**Operating Temperature** Specification applicable to non-terminated bulk fiber cable

# 860655893

---



## SC/UPC Connector, Singlemode, Blue A2

### Product Classification

|                              |   |
|------------------------------|---|
| <b>Regional Availability</b> | Asia   Australia/New Zealand   EMEA   Latin America   North America |
| <b>Portfolio</b>             | CommScope®  |
| <b>Product Type</b>          | Fiber connector   |

### General Specifications

|                       |        |
|-----------------------|--------|
| <b>Color, boot</b>    | Blue   |
| <b>Color, housing</b> | Blue   |
| <b>Interface</b>      | SC/UPC |

### Dimensions

|                                  |                                     |
|----------------------------------|-------------------------------------|
| <b>Length</b>                    | 48 mm   1.89 in                     |
| <b>Compatible Cable Diameter</b> | 1.6 mm   0.063 in   2 mm   0.079 in |

### Material Specifications

|                         |          |
|-------------------------|----------|
| <b>Ferrule Material</b> | Zirconia |
|-------------------------|----------|

### Mechanical Specifications

|  |                |
|--|----------------|
| <b>Cable Retention Strength, maximum</b> | 15.73 lb @ 0 ° |
|--|----------------|

### Optical Specifications

|   |                                 |
|---|---------------------------------|
| <b>Fiber Mode</b>                         | Singlemode                      |
| <b>Fiber Type</b>                         | G.657.A2                        |
| <b>Insertion Loss Change, mating</b>      | 0.2 dB                          |
| <b>Optical Components Standard</b>        | ANSI/TIA-568. 3-D   IEC 61753-1 |
| <b>Insertion Loss Change, temperature</b> | 0.2 dB                          |
| <b>Insertion Loss, maximum</b>            | 0.34 dB                         |
| <b>Return Loss, minimum</b>               | 50 dB                           |

## Regulatory Compliance/Certifications

| Agency     | Classification   |
|------------|--|
| CHINA-ROHS | Above maximum concentration value  |
| REACH-SVHC | Compliant as per SVHC revision on <a href="http://www.commscope.com/ProductCompliance">www.commscope.com/ProductCompliance</a> |
| ROHS       | Compliant/Exempted   |
| UK-ROHS    | Compliant/Exempted   |



## \* Footnotes

**Insertion Loss Change, mating** TIA-568: Maximum insertion loss change after 500 matings

**Insertion Loss Change, temperature** Maximum insertion loss change from -10 °C to +60 °C (+14 °F to +140 °F)



# 860659016

---



MPO12, ULL, FEMALE, SM, GREEN, 2MM

## Product Classification

|                              |   |
|------------------------------|---|
| <b>Regional Availability</b> | Asia   Australia/New Zealand   EMEA   Latin America   North America |
| <b>Portfolio</b>             | CommScope®  |
| <b>Product Type</b>          | Fiber connector   |
| <b>Product Brand</b>         | TeraSPEED®  |

## General Specifications

|                          |                |
|--------------------------|----------------|
| <b>Color</b>             | Green          |
| <b>Color, boot</b>       | Black          |
| <b>Ferrule Geometry</b>  | Angled         |
| <b>Interface</b>         | MPO/APC Female |
| <b>Interface Feature</b> | Unpinned       |
| <b>Total Fiber Count</b> | 12             |

## Dimensions

|                                  |                    |
|----------------------------------|--------------------|
| <b>Length</b>                    | 60.1 mm   2.366 in |
| <b>Compatible Cable Diameter</b> | 2 mm   0.079 in    |

## Material Specifications

|                         |         |
|-------------------------|---------|
| <b>Ferrule Material</b> | Polymer |
|-------------------------|---------|

## Mechanical Specifications

|  |                |
|--|----------------|
| <b>Cable Retention Strength, maximum</b> | 11.24 lb @ 0 ° |
|--|----------------|

## Optical Specifications

|                                      |  |
|--------------------------------------|--|
| <b>Fiber Mode</b>                    | Singlemode                             |
| <b>Fiber Type</b>                    | G.652.D and G.657.A1, TeraSPEED®   OS2 |
| <b>Insertion Loss Change, mating</b> | 0.35 dB                                |
| <b>Optical Components Standard</b>   | ANSI/TIA-568-C.3                       |

# 860659016

---

**Insertion Loss, maximum** 0.35 dB

**Return Loss, minimum** 65 dB

## Packaging and Weights

**Packaging quantity** 1

## \* Footnotes

**Insertion Loss Change, mating** TIA-568: Maximum insertion loss change after 500 matings