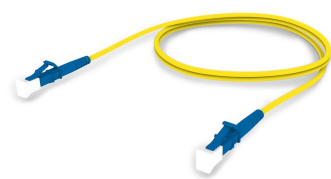


# FDWL3LC21

## Base Product



Singlemode LC/UPC Keyed Blue to LC/UPC Fiber Patch Cord, 1.6 mm Simplex, Plenum

## Product Classification

Regional Availability	Asia   Australia/New Zealand   Europe   Latin America   Middle East /Africa   North America
Portfolio	CommScope®
Product Type	Fiber patch cord, simplex
Product Brand	SYSTIMAX InstaPATCH® 360
Product Series	FDW
Ordering Note	For lengths greater than 999 ft (304 m), orders must be in meters   Minimum length may vary based on cable configuration

## General Specifications

Connector A, quantity	1
Color, boot A	Blue
Color, connector A	Blue
Connector B, quantity	1
Color, boot B	Blue
Color, connector B	Blue
Interface, Connector A	LC/UPC
Interface Feature, connector A	Keyed
Interface, Connector B	LC/UPC
Jacket Color	Yellow
Polarity	Method B
Total Fibers, quantity	1

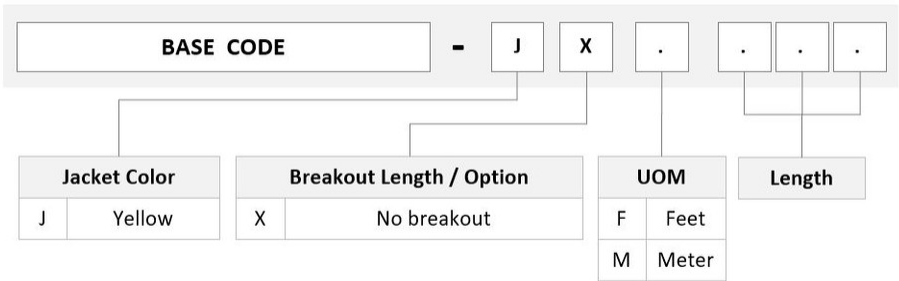
## Dimensions

Cable Assembly Length Range (m)	1 – 999
Cable Assembly Length Range (ft)	1 – 999

# FDWL3LC21

Diameter Over Jacket1.6 mm | 0.063 in

## Ordering Tree



## Mechanical Specifications

Cable Retention Strength, maximum11.24 lb @ 0 ° | 4.40 lb @ 90 °

## Optical Specifications

Fiber ModeSinglemode

Fiber TypeG.652.D | G.657.A1, TeraSPEED®

## Environmental Specifications

Operating Temperature-10 °C to +60 °C (+14 °F to +140 °F)

Environmental SpacePlenum

## Regulatory Compliance/Certifications

### Agency

ISO 9001:2015



### Classification

Designed, manufactured and/or distributed under this quality management system

## Included Products

- 760102657 SFC-LCR-16-KBL – TeraSPEED® Pre-Radiused Keyed LC Connector for 1.6 mm Fiber, simplex Singlemode, blue
- 860637435 – LC/UPC Connector, Singlemode, Blue, Short Boot
- P-001-SP-8W-F16 – Fiber indoor cable, TeraSPEED® 1.6mm Plenum Simplex, 1 fiber, Singlemode G.652.D and G.657.A1, Feet jacket marking



TeraSPEED® Pre-Radiused Keyed LC Connector for 1.6 mm Fiber, simplex Singlemode, blue

Product Classification

Regional Availability	Asia   Australia/New Zealand   EMEA   Latin America   North America
Portfolio	CommScope®
Product Type	Fiber connector
Product Brand	TeraSPEED®

General Specifications

Body Style	Simplex
Color	Blue
Ferrule Geometry	Pre-radiused
Interface	LC/UPC
Interface Feature	Keyed

Dimensions

Length	52 mm   2.047 in
Compatible Cable Diameter	1.6 mm   0.063 in

Material Specifications

Ferrule Material	Zirconia
------------------	----------

Mechanical Specifications

Cable Retention Strength, maximum	11.24 lb @ 0 °
-----------------------------------	----------------

Optical Specifications

Fiber Type	G.652.D and G.657.A1, TeraSPEED®   OS2
Insertion Loss Change, mating	0.3 dB

Optical Components Standard	ANSI/TIA-568-C.3
Insertion Loss Change, temperature	0.3 dB
Insertion Loss, typical	0.2 dB
Return Loss, minimum	50 dB

Packaging and Weights

Packaging quantity	1
--------------------	---

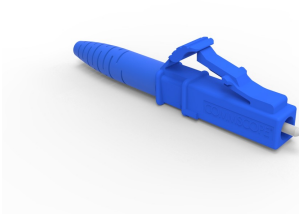
Regulatory Compliance/Certifications

Agency	Classification
ISO 9001:2015	Designed, manufactured and/or distributed under this quality management system



\* Footnotes

Insertion Loss Change, mating	TIA-568: Maximum insertion loss change after 500 matings
Insertion Loss Change, temperature	Maximum insertion loss change from -10 °C to +60 °C (+14 °F to +140 °F)



LC/UPC Connector, Singlemode, Blue, Short Boot

Product Classification

Regional Availability	Asia   Australia/New Zealand   EMEA   Latin America   North America
Portfolio	CommScope®
Product Type	Fiber connector

General Specifications

Color, boot	Blue
Color, housing	Blue
Interface	LC/UPC

Dimensions

Length	41.6 mm   1.638 in
--------	--------------------

Material Specifications

Ferrule Material	Zirconia
------------------	----------

Mechanical Specifications

Cable Retention Strength, maximum	11.24 lb @ 0 °
-----------------------------------	----------------

Optical Specifications

Fiber Mode	Singlemode
Insertion Loss Change, mating	0.2 dB
Optical Components Standard	ANSI/TIA-568. 3-D   IEC 61753-1
Insertion Loss Change, temperature	0.3 dB
Insertion Loss, maximum	0.25 dB
Return Loss, minimum	55 dB

Regulatory Compliance/Certifications

Agency	Classification
CHINA-ROHS	Below maximum concentration value
ROHS	Compliant
UK-ROHS	Compliant



\* Footnotes

<b>Insertion Loss Change, mating</b>	TIA-568: Maximum insertion loss change after 500 matings
<b>Insertion Loss Change, temperature</b>	Maximum insertion loss change from -10 °C to +60 °C (+14 °F to +140 °F)

# P-001-SP-8W-F16

Fiber indoor cable, TeraSPEED® 1.6mm Plenum Simplex, 1 fiber, Singlemode G.652.D and G.657.  
A1, Feet jacket marking

## Product Classification

Regional Availability	Asia   Australia/New Zealand   Latin America   Middle East/Africa   North America
Portfolio	CommScope®
Product Type	Fiber indoor cable
Product Series	P-SP

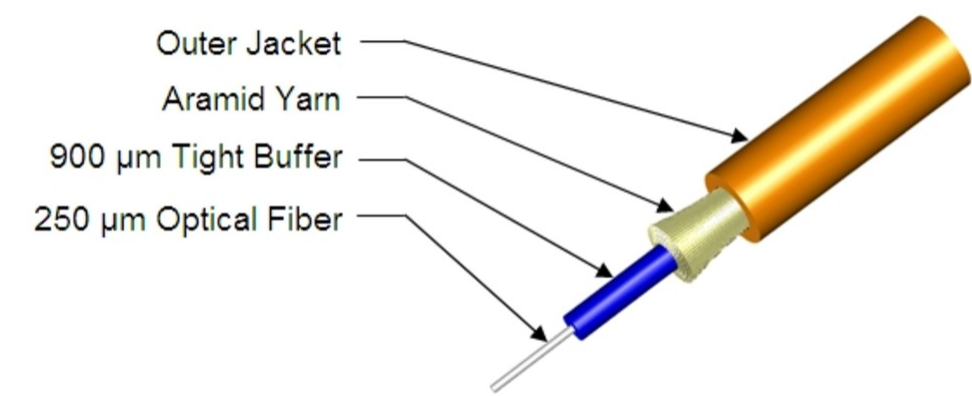
## General Specifications

Cable Type	Cordage
Construction Type	Non-armored
Subunit Type	Gel-free
Jacket Marking	Feet
Total Fiber Count	1

## Dimensions

Diameter Over Jacket	1.7 mm   0.067 in
----------------------	-------------------

## Representative Image



## Mechanical Specifications

# P-001-SP-8W-F16

Minimum Bend Radius, loaded	38 mm   1.496 in
Minimum Bend Radius, unloaded	15 mm   0.591 in
Tensile Load, long term, maximum	29 N   6.519 lbf
Tensile Load, short term, maximum	7 N   1.574 lbf
Compression	10 N/mm   57.101 lb/in
Compression Test Method	FOTP-41   IEC 60794-1 E3
Flex	300 cycles
Flex Test Method	FOTP-104   IEC 60794-1 E6
Impact	0.74 N-m   6.55 in lb
Impact Test Method	FOTP-25   IEC 60794-1 E4
Strain	See long and short term tensile loads
Strain Test Method	FOTP-33   IEC 60794-1 E1
Twist	10 cycles
Twist Test Method	FOTP-85   IEC 60794-1 E7
Vertical Rise, maximum	500 m   1,640.42 ft

## Optical Specifications

Fiber Type	G.652.D and G.657.A1, TeraSPEED®
------------	----------------------------------

## Environmental Specifications

Installation temperature	0 °C to +70 °C (+32 °F to +158 °F)
Operating Temperature	-20 °C to +70 °C (-4 °F to +158 °F)
Storage Temperature	-40 °C to +70 °C (-40 °F to +158 °F)
Cable Qualification Standards	ANSI/ICEA S-83-596   Telcordia GR-409
Environmental Space	Plenum
Flame Test Listing	NEC OFNP (ETL) and c(ETL)
Flame Test Method	NFPA 262

## Environmental Test Specifications

Heat Age	-20 °C to +85 °C (-4 °F to +185 °F)
Heat Age Test Method	IEC 60794-1 F9
Low High Bend	-20 °C to +70 °C (-4 °F to +158 °F)
Low High Bend Test Method	FOTP-37   IEC 60794-1 E11



# P-001-SP-8W-F16

---

Temperature Cycle	-20 °C to +70 °C (-4 °F to +158 °F)
Temperature Cycle Test Method	FOTP-3   IEC 60794-1 F1

## Packaging and Weights

Cable weight	3 kg/km   2.016 lb/kft
--------------	------------------------

## Regulatory Compliance/Certifications

Agency	Classification
ISO 9001:2015	Designed, manufactured and/or distributed under this quality management system



### \* Footnotes

Operating Temperature	Specification applicable to non-terminated bulk fiber cable
-----------------------	---