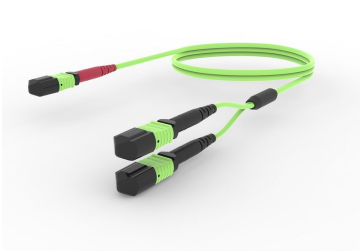


UQV2CMPHF

Base Product



Ultra Low Loss OM5, MPO24 (Unpinned) to MPO12 (Unpinned), Fiber Extension Cable Assembly, 24-Fiber, Plenum

Product Classification

Regional Availability	Australia/New Zealand Europe Latin America Middle East/Africa North America
Portfolio	CommScope®
Product Type	Fiber array cable assembly
Product Brand	SYSTIMAX ULL
Ordering Note	Can only be used with CXP transceivers For additional jacket colors, please contact a CommScope Sales Representative For lengths greater than 999 ft (304 m), orders must be in meters Minimum length may vary based on cable configuration

General Specifications

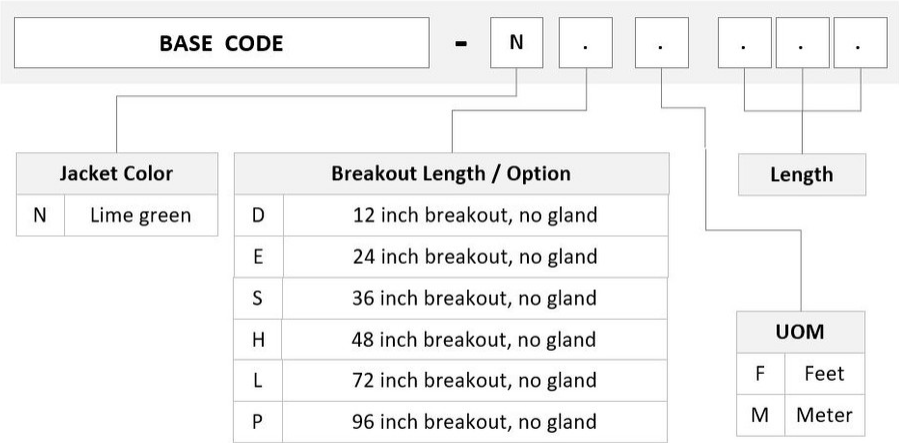
Color, boot A	Red
Color, connector A	Lime green
Color, boot B	Black
Color, connector B	Lime green
Construction Type	Stranded
Furcation Color	Lime green
Interface, Connector A	MPO-24/UPC Female
Interface Feature, connector A	QSFP configuration
Interface, Connector B	MPO-12/UPC Female
Jacket Color	Lime green
Polarity	Method B Enhanced (ULL)
Total Fibers, quantity	24

Dimensions

UQV2CMPHF

Cable Assembly Length Range (m)	3 – 999
Cable Assembly Length Range (ft)	10 – 999

Ordering Tree



Mechanical Specifications

Cable Retention Strength, maximum	11.24 lb @ 0 ° 4.40 lb @ 90 °
-----------------------------------	---------------------------------

Optical Specifications

Fiber Mode	Multimode
Fiber Type	OM5, LazrSPEED®

Environmental Specifications

Operating Temperature	-10 °C to +60 °C (+14 °F to +140 °F)
Environmental Space	Indoor Plenum

Regulatory Compliance/Certifications

Agency	Classification
ISO 9001:2015	Designed, manufactured and/or distributed under this quality management system

Included Products

760235986 P-024-MP-5G-F36LM	– Fiber indoor cable, LazrSPEED® Plenum MPO Light Duty for Patchcords, 24 fiber, Multimode OM5, Feet jacket marking, Lime green jacket color
--------------------------------	--

UQV2CMPHF

- 860617232 – MP012, ULTRA LOW LOSS, FEMALE, OM5, LIME, 3mm
- 860634624 – LazrSPEED® Elite MPO Female 24 Fiber Connector, lime green



Fiber indoor cable, LazrSPEED® Plenum MPO Light Duty for Patchcords, 24 fiber, Multimode OM5, Feet jacket marking, Lime green jacket color

Product Classification

Regional Availability	Asia Australia/New Zealand Latin America Middle East/Africa North America
Portfolio	CommScope®
Product Type	Fiber indoor cable
Product Series	P-MP

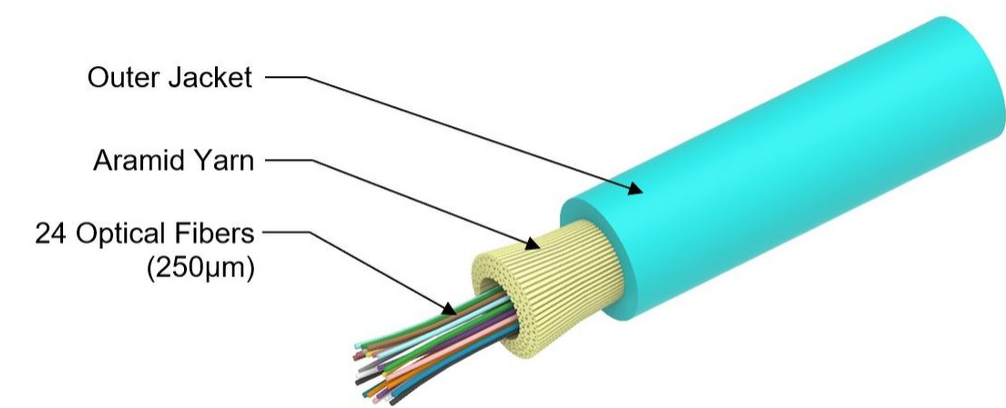
General Specifications

Cable Type	MPO trunk cable
Construction Type	Non-armored
Subunit Type	Gel-free
Jacket Color	Lime green
Jacket Marking	Feet
Total Fiber Count	24

Dimensions

Diameter Over Jacket	3.6 mm 0.142 in
----------------------	-------------------

Representative Image



Mechanical Specifications

Minimum Bend Radius, loaded	54 mm 2.126 in
Minimum Bend Radius, unloaded	29 mm 1.142 in
Tensile Load, long term, maximum	120 N 26.977 lbf
Tensile Load, short term, maximum	400 N 89.924 lbf
Compression	4 N/mm 22.841 lb/in
Compression Test Method	FOTP-41 IEC 60794-1 E3
Flex	300 cycles
Flex Test Method	FOTP-104 IEC 60794-1 E6
Impact	0.74 N-m 6.55 in lb
Impact Test Method	FOTP-25 IEC 60794-1 E4
Strain	See long and short term tensile loads
Strain Test Method	FOTP-33 IEC 60794-1 E1
Twist	10 cycles
Twist Test Method	FOTP-85 IEC 60794-1 E7
Vertical Rise, maximum	500 m 1,640.42 ft

Optical Specifications

Fiber Type	OM5, LazrSPEED® wideband OM5, LazrSPEED® wideband
------------	---

Environmental Specifications

Installation temperature	0 °C to +70 °C (+32 °F to +158 °F)
Operating Temperature	0 °C to +70 °C (+32 °F to +158 °F)

Storage Temperature	-40 °C to +70 °C (-40 °F to +158 °F)
Cable Qualification Standards	ANSI/ICEA S-83-596 Telcordia GR-409
Environmental Space	Plenum
Flame Test Listing	NEC OFNP (ETL) and c(ETL)
Flame Test Method	NFPA 130 NFPA 262

Environmental Test Specifications

Heat Age	0 °C to +85 °C (+32 °F to +185 °F)
Heat Age Test Method	IEC 60794-1 F9
Low High Bend	0 °C to +70 °C (+32 °F to +158 °F)
Low High Bend Test Method	FOTP-37 IEC 60794-1 E11
Temperature Cycle	0 °C to +70 °C (+32 °F to +158 °F)
Temperature Cycle Test Method	FOTP-3 IEC 60794-1 F1

Packaging and Weights

Cable weight	12 kg/km 8.064 lb/kft
--------------	-------------------------

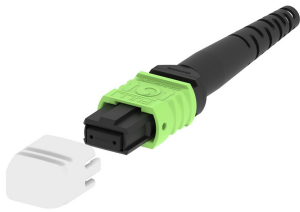
Regulatory Compliance/Certifications

Agency	Classification
CHINA-ROHS	Below maximum concentration value
ISO 9001:2015	Designed, manufactured and/or distributed under this quality management system
ROHS	Compliant
UK-ROHS	Compliant



* Footnotes

Operating Temperature Specification applicable to non-terminated bulk fiber cable



MPO12, ULTRA LOW LOSS, FEMALE, OM5, LIME, 3mm

Product Classification

Regional Availability	Asia Australia/New Zealand EMEA Latin America North America
Portfolio	CommScope®
Product Type	Fiber connector
Product Brand	LazrSPEED®

General Specifications

Color	Lime green
Color, boot	Black
Ferrule Geometry	Flat
Interface	MPO/UPC Female
Interface Feature	Unpinned
Total Fiber Count	12

Dimensions

Length	60.1 mm 2.366 in
Compatible Cable Diameter	3 mm 0.118 in

Material Specifications

Ferrule Material	Polymer
------------------	---------

Mechanical Specifications

Cable Retention Strength, maximum	11.24 lb @ 0 °
-----------------------------------	----------------

Optical Specifications

Fiber Mode	Multimode
Fiber Type	OM5, LazrSPEED® wideband
Insertion Loss Change, mating	0.3 dB
Optical Components Standard	ANSI/TIA-568-C.3

Insertion Loss Change, temperature	0.3 dB
Insertion Loss, maximum	0.2 dB
Return Loss, minimum	27 dB

Packaging and Weights

Packaging quantity	1
--------------------	---

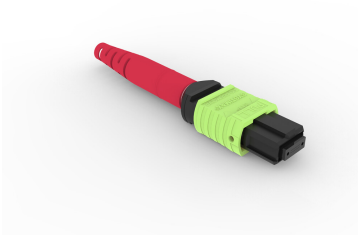
Regulatory Compliance/Certifications

Agency	Classification
CHINA-ROHS	Below maximum concentration value
ISO 9001:2015	Designed, manufactured and/or distributed under this quality management system
REACH-SVHC	Compliant as per SVHC revision on www.commscope.com/ProductCompliance
ROHS	Compliant
UK-ROHS	Compliant



* Footnotes

Insertion Loss Change, mating	TIA-568: Maximum insertion loss change after 500 matings
Insertion Loss Change, temperature	Maximum insertion loss change from -10 °C to +60 °C (+14 °F to +140 °F)



LazrSPEED® Elite MPO Female 24 Fiber Connector, lime green

Product Classification

Regional Availability	Asia Australia/New Zealand EMEA Latin America North America
Portfolio	CommScope®
Product Type	Fiber connector
Product Brand	LazrSPEED®

General Specifications

Color	Lime green
Color, boot	Red
Ferrule Geometry	Flat
Interface	MPO/UPC Female
Interface Feature	Unpinned
Total Fiber Count	24

Dimensions

Length	60.1 mm 2.366 in
Compatible Cable Diameter	3 mm 0.118 in

Material Specifications

Ferrule Material	Polymer
------------------	---------

Mechanical Specifications

Cable Retention Strength, maximum	11.24 lb @ 0 °
-----------------------------------	----------------

Optical Specifications

Fiber Mode	Multimode
Fiber Type	OM5, LazrSPEED® wideband
Insertion Loss Change, mating	0.3 dB

Optical Components Standard	ANSI/TIA-568-C.3
Insertion Loss Change, temperature	0.3 dB
Insertion Loss, maximum	0.27 dB
Insertion Loss, ULL, maximum	0.2 dB
Return Loss, minimum	27 dB

Packaging and Weights

Packaging quantity	1
--------------------	---

Regulatory Compliance/Certifications

Agency	Classification
CHINA-ROHS	Above maximum concentration value
ISO 9001:2015	Designed, manufactured and/or distributed under this quality management system
REACH-SVHC	Compliant as per SVHC revision on www.commscope.com/ProductCompliance
ROHS	Compliant/Exempted
UK-ROHS	Compliant/Exempted



* Footnotes

Insertion Loss Change, mating	TIA-568: Maximum insertion loss change after 500 matings
Insertion Loss Change, temperature	Maximum insertion loss change from -10 °C to +60 °C (+14 °F to +140 °F)