

Protecting the future today

CommScope helps leading Chinese telecoms operator seal cable connection points

Customer

Unnamed Chinese state-owned telecoms operator

Country

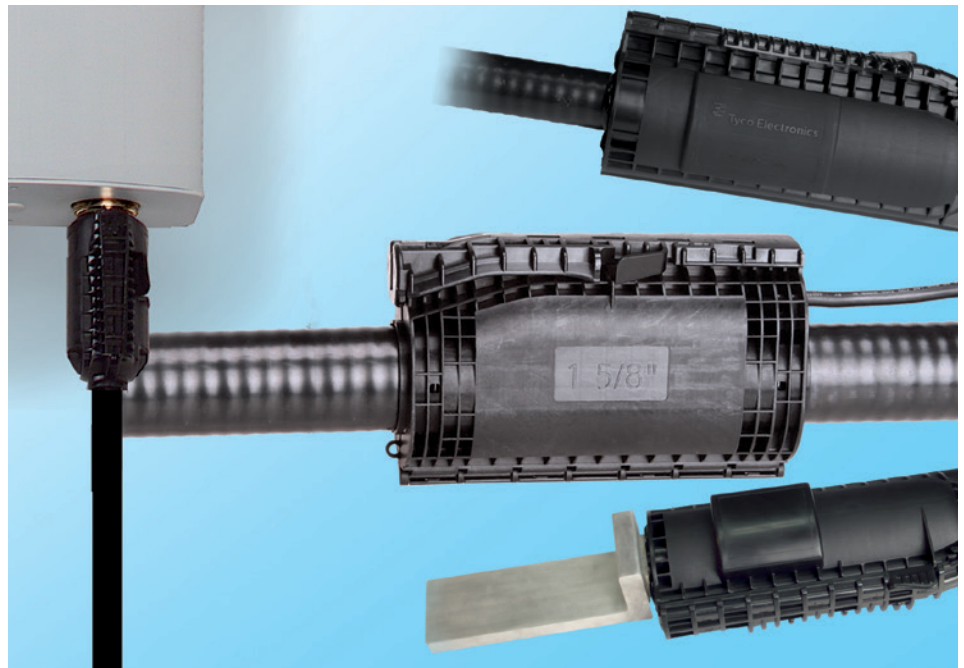
China

Challenges

- Historically, feeder line connectors in base stations were sealed using conventional adhesive tape, which could be problematic for construction workers
- Tapes often needed to be replaced regularly
- It was not possible to unwind the tapes and reuse them during maintenance due to the voltage standing-wave ratio of feeder lines being affected by contact with water
- The increased density of antenna terminals means there was not enough space to use conventional adhesive tape.

Solutions included

110,000 sets of CommScope feeder line protection closures



This customer is a major Chinese state-owned telecoms operator and was the global partner of Expo 2010 Shanghai. Over the years, it has regularly appeared in the Global 500 corporation list and its main business covers fixed line, mobile communications, satellite communications and also internet access and applications

As of H1 2011, the customer group had 194 million fixed line users, 62.36 million mobile users (CDMA), and 61.74 million broadband users, and held total assets of RMB632.3 billion, employing around 670,000. The customer group was ranked 29th in "China's Top 500" enterprises in 2016.

CommScope's customer is a subsidiary of the group and one of the most active providers of general information services in China's coastal economic regions. It generates revenues in excess of 10 billion RMB per year and offers a comprehensive range of solutions, including fixed line telephony, CDMA mobile network, broadband internet, 3G broadband mobile internet, ITV and Global Ryeservice. The customer is now investing in 4G and 5G operations to address the mobile data explosion in China.

How to protect the connections?

Historically, connectors for feeder lines in base stations were sealed with conventional adhesive tape, requiring considerable skill on the part of construction workers. Furthermore, tapes regularly needed to be replaced, which meant high maintenance costs. Also, when carrying out maintenance, construction workers could not unwind tapes and reuse them since the voltage standing-wave ratio of feeder lines was affected by contact with water. A further challenge exists in that the increased density

Innovative, future-proof, reliable

CommScope provides high-quality line protection closures, which are designed to be simple to install and convenient to use. They are built with overhead work in mind, as CommScope understands the need to often install base stations in awkward locations.

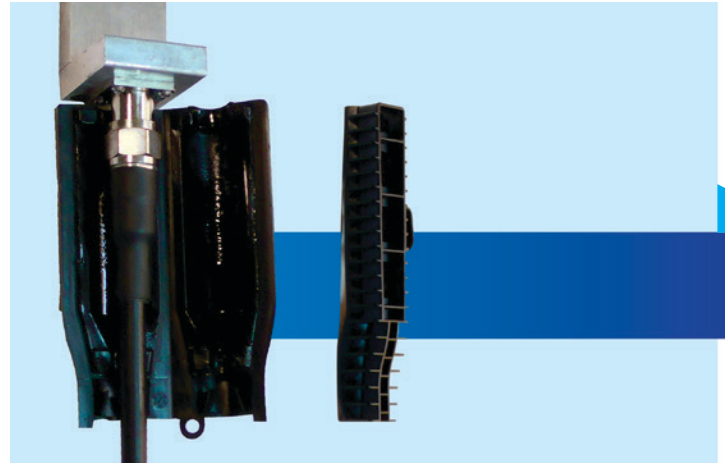
They are also designed with simplicity as a priority, enabling the amount of time required to seal a connection to be as short as five seconds. CommScope line protection closures also employ specialized gel technology, which gives greater longevity, allowing the connector seals to be opened and reused for more than 20 years. Compared to traditional sealing tape, the customer would benefit from increased base station efficiency over time as well as reduced maintenance costs.

CommScope: world-class solutions

CommScope worked closely with the customer to understand its need and specify the right solution. We also worked with the customer to plan installation of the line protection closures throughout their network and the work was then carried out by the customer's own teams of construction technicians.

The project was carried out in line with a tight schedule, with installation of the customer's LTE 800M antennas an urgent requirement and work on a total of 5,000 base stations to be done between early March and the end of May. CommScope needed to supply 110,000 sets of line protection closures at short notice to meet the customer's time requirement.

Before the project commenced, CommScope performed a simulated installation of the solution with line protection closures having similar dimensions. The aim of this exercise was to help the CommScope team fully appreciate the work required to install on high-density LTE 800M antennas with eight terminals. The end result was a success, with CommScope able to install the protection closures quickly and easily thanks to the solution's simple design.



Great solutions, great results

The customer's decision to choose CommScope line protection closures paid off. CommScope received the customer's order for 110,000 closures in March 2017 and had successfully fulfilled the order by the end of May. The construction period also coincided with the rainy season in the customer's region, but—despite the problematic weather conditions—CommScope's FAST/GSIC Gel Sealed Closure for Cables and Connectors solution was able to withstand the rain and deliver the waterproof result the customer needed. The customer was also impressed with the CommScope solution's high quality and simple installation.

The customer has now retained CommScope to supply line protection closures and related solutions through December 2018.

To read more about CommScope line protection closures and their benefits to telecoms operators, please visit:

[Flexible-service-terminals](#)

CommScope (NASDAQ: COMM) helps design, build and manage wired and wireless networks around the world. As a communications infrastructure leader, we shape the always-on networks of tomorrow. For more than 40 years, our global team of greater than 20,000 employees, innovators and technologists has empowered customers in all regions of the world to anticipate what's next and push the boundaries of what's possible. Discover more at commscope.com.

COMMSCOPE®

commscope.com

Visit our website or contact your local CommScope representative for more information.

© 2017 CommScope, Inc. All rights reserved.

All trademarks identified by ® or TM are registered trademarks or trademarks, respectively, of CommScope, Inc. This document is for planning purposes only and is not intended to modify or supplement any specifications or warranties relating to CommScope products or services. CommScope is committed to the highest standards of business integrity and environmental sustainability with a number of CommScope's facilities across the globe certified in accordance with international standards, including ISO 9001, TL 9000, and ISO 14001. Further information regarding CommScope's commitment can be found at www.commscope.com/About-Us/Corporate-Responsibility-and-Sustainability.

CU-112085-EN (11/17)