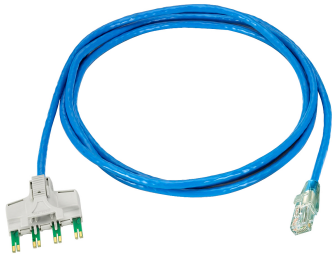


TP6TB-BL25



Ultim8 Copper Patch Cord, 4-pair to RJ45, category 6, blue, 25 ft

OBSOLETE

This product was discontinued on: December 17, 2020

Replaced By:

C01E5H2	Highband® RJ45 Cat6 Patch Cord
C01G5G2	Highband® Cat6A Patch Cord, Front Facing to RJ45 Plug

Product Classification

Regional Availability	Asia Latin America North America
Product Type	Twisted pair patch cord
Product Brand	Ultim 8®

General Specifications

ANSI/TIA Category	6
Cable Type	U/UTP (unshielded)
Conductor Type	Stranded
Interface, Connector A	4-pair plug
Interface, Connector B	RJ45 plug
Jacket Color	Blue
Pairs, quantity	4
Wiring	T568B

Dimensions

Cord Length	7.62 m 25 ft
Compatible Conductor Gauge, stranded	24 AWG

Material Specifications

Conductor Material	Tin plated copper
---------------------------	-------------------

TP6TB-BL25

Environmental Specifications

Operating Temperature	-10 °C to +60 °C (+14 °F to +140 °F)
Environmental Space	Non-plenum
Flammability Rating	CM

Regulatory Compliance/Certifications

Agency	Classification
CHINA-ROHS	Below maximum concentration value
REACH-SVHC	Compliant as per SVHC revision on www.commscope.com/ProductCompliance
ROHS	Compliant
UK-ROHS	Compliant

