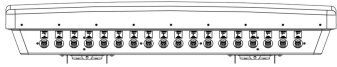


2X9NPA2010F



18-port multibeam antenna, 18x 1710–2170 MHz, 2x9 Beam Panel Antenna for Event Coverage.

18-port multibeam antenna, 18x 1710–2170 MHz, 2x9 Beam Panel Antenna for Event Coverage. Two rows of beams spaced 8° in elevation. One set of beams 4° up (+45°) and one set of beams 4° down (-45°) and 5° in azimuth. Upper and lower beam sets displaced in azimuth by $\pm 2.5^\circ$ from boresight.

OBSOLETE

This product was discontinued on: November 30, 2023

General Specifications

Antenna Type	Multibeam
Band	Single band
Color	Light Gray (RAL 7035)
Grounding Type	RF connector inner conductor and body grounded to reflector and mounting bracket
Performance Note	Outdoor usage
Radome Material	ASA, UV stabilized
RF Connector Interface	7-16 DIN Female
RF Connector Location	Bottom
RF Connector Quantity, high band	18
RF Connector Quantity, mid band	0
RF Connector Quantity, low band	0
RF Connector Quantity, total	18

Dimensions

Width	1486 mm 58.504 in
Depth	283 mm 11.142 in
Length	1771 mm 69.724 in
Net Weight, without mounting kit	140 kg 308.647 lb

Electrical Specifications

Impedance	50 ohm
------------------	--------

2X9NPA2010F

Operating Frequency Band	1710 – 2170 MHz
Polarization	Single Slant Polarization

Electrical Specifications

Frequency Band, MHz	1710–1920	1920–2170
Gain, dBi	25	27
Beamwidth, Horizontal, degrees	6	5
Beamwidth, Vertical, degrees	7.2	5.8
USLS (First Lobe), dB	18	18
Front-to-Back Ratio at 180°, dB	30	30
Isolation, Cross Polarization, dB	16	16
VSWR Return loss, dB	1.43 15.0	1.43 15.0
PIM, 3rd Order, 2 x 20 W, dBc	-150	-150
Input Power per Port, maximum, watts	300	300

Mechanical Specifications

Mechanical Tilt Range	0°–12°
Wind Loading @ Velocity, frontal	3,222.0 N @ 150 km/h (724.3 lbf @ 150 km/h)
Wind Loading @ Velocity, lateral	174.0 N @ 150 km/h (39.1 lbf @ 150 km/h)
Wind Loading @ Velocity, rear	3,123.0 N @ 150 km/h (702.1 lbf @ 150 km/h)
Wind Speed, maximum	160 km/h (99 mph)

Packaging and Weights

Width, packed	1758 mm 69.213 in
Depth, packed	640 mm 25.197 in
Length, packed	1998 mm 78.661 in
Weight, gross	188 kg 414.469 lb

Regulatory Compliance/Certifications

Agency	Classification
CE	Compliant with the relevant CE product directives
CHINA-ROHS	Below maximum concentration value
ISO 9001:2015	Designed, manufactured and/or distributed under this quality management system
REACH-SVHC	Compliant as per SVHC revision on www.andrew.com/ProductCompliance

2X9NPA2010F

ROHS Compliant
UK-ROHS Compliant



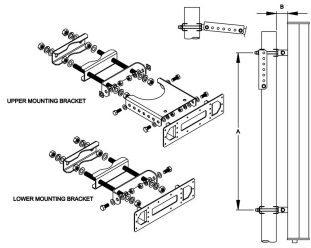
Included Products

T-041-GL-E – Adjustable Tilt Pipe Mounting Kit for 2.0"-4.5" (60-115mm) OD round members for panel antennas. Includes 2 clamp sets.

* Footnotes

Performance Note Severe environmental conditions may degrade optimum performance

T-041-GL-E



Adjustable Tilt Pipe Mounting Kit for 2.0"-4.5" (60-115mm) OD round members for panel antennas. Includes 2 clamp sets.

Product Classification

Product Type Adjustable tilt mounting kit

General Specifications

Application Outdoor

Color Silver

Dimensions

Compatible Length, maximum 1500 mm | 59.055 in

Compatible Length, minimum 1200 mm | 47.244 in

Compatible Diameter, maximum 115 mm | 4.528 in

Compatible Diameter, minimum 60 mm | 2.362 in

Antenna-to-Pipe Distance 85 mm | 3.346 in

Bracket-to-Bracket Distance 976 mm | 38.425 in

Weight, net 5.5 kg | 12.125 lb

Material Specifications

Material Type Galvanized steel

Mechanical Specifications

Mechanical Tilt 0°-12° in steps of 2°

Packaging and Weights

Included Brackets | Hardware

Packaging quantity 1

Regulatory Compliance/Certifications

Agency	Classification
CE	Compliant with the relevant CE product directives

T-041-GL-E

CHINA-ROHS	Below maximum concentration value
ISO 9001:2015	Designed, manufactured and/or distributed under this quality management system
REACH-SVHC	Compliant as per SVHC revision on www.andrew.com/ProductCompliance
ROHS	Compliant
UK-ROHS	Compliant

