

# 2CPX208R-V3



4-port multibeam antenna, 4x 790–960 MHz, 2x 38° HPBW, 2x RET with manual override.

- Integrated Internal Remote Electrical Tilt (RET), with independent control of electrical tilt with manual override on all arrays
- Single panel design supporting two separate beams perfectly optimized at horizontal pointing angles of +27 degrees and –27 degrees from boresight

## OBSOLETE

This product was discontinued on: November 30, 2023

## General Specifications

<b>Antenna Type</b>	Multibeam
<b>Band</b>	Single band
<b>Color</b>	Light Gray (RAL 7035)
<b>Grounding Type</b>	RF connector inner conductor and body grounded to reflector and mounting bracket
<b>Performance Note</b>	Outdoor usage
<b>Radome Material</b>	Polyester fiberglass pultrusion
<b>Radiator Material</b>	Low loss circuit board
<b>Reflector Material</b>	Aluminum
<b>RF Connector Interface</b>	7-16 DIN Female
<b>RF Connector Location</b>	Bottom
<b>RF Connector Quantity, low band</b>	4
<b>RF Connector Quantity, total</b>	4

## Remote Electrical Tilt (RET) Information

<b>RET Interface</b>	8-pin DIN Female   8-pin DIN Male
<b>RET Interface, quantity</b>	1 female   1 male
<b>Input Voltage</b>	10–30 Vdc
<b>Internal RET</b>	Low band (2)
<b>Power Consumption, idle state, maximum</b>	2 W
<b>Power Consumption, normal conditions, maximum</b>	13 W

# 2CPX208R-V3

**Protocol** 3GPP/AISG 2.0 (Single RET)

## Dimensions

**Width** 504 mm | 19.843 in

**Depth** 118 mm | 4.646 in

**Length** 2090 mm | 82.284 in

**Net Weight, without mounting kit** 32.5 kg | 71.65 lb

## Electrical Specifications

**Impedance** 50 ohm

**Operating Frequency Band** 790 – 960 MHz

**Polarization**  $\pm 45^\circ$

## Electrical Specifications

Frequency Band, MHz	790–890	890–960
Gain, dBi	18.1	18.6
Beam Centers, Horizontal, degrees	$\pm 27$	$\pm 27$
Beamwidth, Horizontal, degrees	40	35
Beamwidth, Vertical, degrees	10	9.1
Beam Tilt, degrees	0–10	0–10
USLS (First Lobe), dB	18	18
Null Fill, dB	-22	-22
Front-to-Back Ratio at 180°, dB	32	31
Front-to-Back Ratio, Copolarization 180° $\pm$ 30°, dB	26	23
Isolation, Same Beam, dB	25	25
VSWR   Return loss, dB	1.29   18.0	1.29   18.0
PIM, 3rd Order, 2 x 20 W, dBc	-150	-150
Input Power per Port, maximum, watts	300	300

## Mechanical Specifications

**Wind Loading @ Velocity, frontal** 1,352.0 N @ 150 km/h (303.9 lbf @ 150 km/h)

**Wind Loading @ Velocity, lateral** 228.0 N @ 150 km/h (51.3 lbf @ 150 km/h)

**Wind Loading @ Velocity, rear** 1,379.0 N @ 150 km/h (310.0 lbf @ 150 km/h)

**Wind Speed, maximum** 200 km/h (124 mph)

# 2CPX208R-V3

---

## Packaging and Weights

<b>Width, packed</b>	593 mm   23.346 in
<b>Depth, packed</b>	209 mm   8.228 in
<b>Length, packed</b>	2229 mm   87.756 in
<b>Weight, gross</b>	45.5 kg   100.31 lb

## Regulatory Compliance/Certifications

<b>Agency</b>	<b>Classification</b>
CE	Compliant with the relevant CE product directives
CHINA-ROHS	Above maximum concentration value
ISO 9001:2015	Designed, manufactured and/or distributed under this quality management system
ROHS	Compliant/Exempted
UK-ROHS	Compliant/Exempted



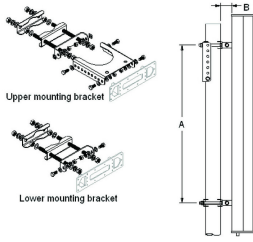
## Included Products

- T-029-GL-E – Adjustable Tilt Pipe Mounting Kit for 2.362"-4.5" (60-115mm) OD round members for panel antennas. Includes 2 clamp sets.

## \* Footnotes

**Performance Note** Severe environmental conditions may degrade optimum performance

# T-029-GL-E



Adjustable Tilt Pipe Mounting Kit for 2.362"-4.5" (60-115mm) OD round members for panel antennas. Includes 2 clamp sets.

## Product Classification

**Product Type** Adjustable tilt mounting kit

## General Specifications

**Application** Outdoor

**Color** Silver

## Dimensions

**Compatible Length, maximum** 2850 mm | 112.205 in

**Compatible Length, minimum** 1500 mm | 59.055 in

**Compatible Diameter, maximum** 115 mm | 4.528 in

**Compatible Diameter, minimum** 60 mm | 2.362 in

**Antenna-to-Pipe Distance** 85 mm | 3.346 in

**Bracket-to-Bracket Distance** 1400 mm | 55.118 in

**Weight, net** 6 kg | 13.228 lb

## Material Specifications

**Material Type** Galvanized steel

## Mechanical Specifications

**Mechanical Tilt** 0°-8°

## Packaging and Weights

**Included** Brackets | Hardware

**Packaging quantity** 1

## Regulatory Compliance/Certifications

Agency	Classification
CE	Compliant with the relevant CE product directives

# T-029-GL-E

---

CHINA-ROHS	Below maximum concentration value
ISO 9001:2015	Designed, manufactured and/or distributed under this quality management system
REACH-SVHC	Compliant as per SVHC revision on <a href="http://www.commscope.com/ProductCompliance">www.commscope.com/ProductCompliance</a>
ROHS	Compliant
UK-ROHS	Compliant

