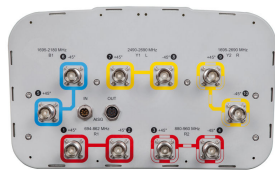


# EGHTV65B-F-C3-5XR



10-port sector antenna, 2x 694–862, 2x 880–960, 2x 1695–2180, 2x 2490–2690 and 2x 1695–2690 MHz, 65° HPBW, 5x RET. Low band (LB) and one high (HB1/HB2) band arrays are diplexed at the element level.

- All Internal RET actuators are connected in “Cascaded SRET” configuration
- Uses the 4.3-10 connector which is 40 percent smaller than the 7-16 DIN connector

## OBSOLETE

This product was discontinued on: March 31, 2023

## General Specifications

Antenna Type	Sector
Band	Multiband
Grounding Type	RF connector inner conductor and body grounded to reflector and mounting bracket
Performance Note	Outdoor usage   Wind loading figures are validated by wind tunnel measurements described in white paper WP-112534-EN
Radome Material	Fiberglass, UV resistant
Reflector Material	Aluminum
RF Connector Interface	4.3-10 Female
RF Connector Location	Bottom
RF Connector Quantity, high band	6
RF Connector Quantity, mid band	0
RF Connector Quantity, low band	4
RF Connector Quantity, total	10

## Remote Electrical Tilt (RET) Information

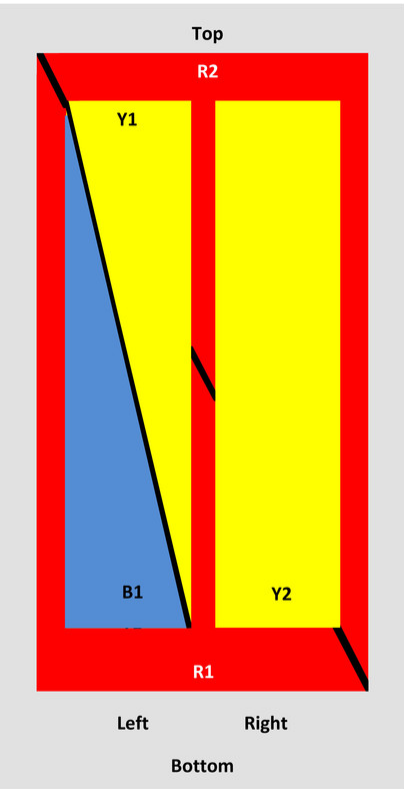
RET Interface	8-pin DIN Female   8-pin DIN Male
RET Interface, quantity	1 female   1 male
Input Voltage	10–30 Vdc
Internal RET	High band (3)   Low band (2)
Power Consumption, idle state, maximum	2 W

# EGHTV65B-F-C3-5XR

Power Consumption, normal conditions, maximum	13 W
Protocol	3GPP/AISG 2.0 (Single RET)
Dimensions	
Width	350 mm   13.78 in
Depth	208 mm   8.189 in
Length	1828 mm   71.969 in
Net Weight, without mounting kit	30 kg   66.139 lb

## Array Layout

EGHTV65B-F-C3-5XR



Array	Freq (MHz)	Conns	RET (SRET)	AISG RET UID
R1	694-862	1-2	1	ANxxxxxxxxxxxxx1
R2	880-960	3-4	2	ANxxxxxxxxxxxxx2
B1	1695-2180	5-6	3	ANxxxxxxxxxxxxx3
Y1	2490-2690	7-8	4	ANxxxxxxxxxxxxx4
Y2	1695-2690	9-10	5	ANxxxxxxxxxxxxx5

View from the front of the antenna  
(Sizes of colored boxes are not true depictions of array sizes)

## Electrical Specifications

Impedance	50 ohm
-----------	--------

# EGHTV65B-F-C3-5XR

Operating Frequency Band	1695 – 2180 MHz   1695 – 2690 MHz   2490 – 2690 MHz   694 – 862 MHz   880 – 960 MHz
Polarization	±45°
Total Input Power, maximum	800 W @ 50 °C

## Electrical Specifications

	LB	LB	HB1	HB1	HB2	HB3	HB3	HB3
Frequency Band, MHz	694–862	880–960	1920–2180	1695–1920	2490–2690	1920–2180	2300–2690	1695–1920
Gain, dBi	15.1	15.5	18	17.7	18.3	18.8	19.2	18.1
Beamwidth, Horizontal, degrees	66	63	64	62	64	64	62	62
Beamwidth, Vertical, degrees	11.7	9.9	4.9	5.5	4.1	4.9	4.2	5.5
Beam Tilt, degrees	2–14	2–14	2–12	2–12	2–12	2–12	2–12	2–12
USLS (First Lobe), dB	15	19	17	17	21	17	19	16
Front-to-Back Ratio at 180°, dB	32	32	35	31	30	37	36	32
Isolation, Cross Polarization, dB	28	28	28	28	28	28	28	28
Isolation, Inter-band, dB	30	30	30	30	30	30	30	30
VSWR   Return loss, dB	1.5   14.0	1.5   14.0	1.5   14.0	1.5   14.0	1.5   14.0	1.5   14.0	1.5   14.0	1.5   14.0
PIM, 3rd Order, 2 x 20 W, dBc	-150	-150	-150	-150	-150	-150	-150	-150
Input Power per Port at 50°C, maximum, watts	300	300	250	250	200	250	200	250

## Mechanical Specifications

Wind Loading @ Velocity, frontal	301.0 N @ 150 km/h (67.7 lbf @ 150 km/h)
Wind Loading @ Velocity, lateral	254.0 N @ 150 km/h (57.1 lbf @ 150 km/h)
Wind Loading @ Velocity, maximum	638.0 N @ 150 km/h (143.4 lbf @ 150 km/h)
Wind Loading @ Velocity, rear	319.0 N @ 150 km/h (71.7 lbf @ 150 km/h)
Wind Speed, maximum	241 km/h (150 mph)

## Packaging and Weights

Width, packed	456 mm   17.953 in
Depth, packed	357 mm   14.055 in
Length, packed	1975 mm   77.756 in
Weight, gross	43.5 kg   95.901 lb

# EGHTV65B-F-C3-5XR

## Regulatory Compliance/Certifications

Agency	Classification
CE	Compliant with the relevant CE product directives
CHINA-ROHS	Above maximum concentration value
ISO 9001:2015	Designed, manufactured and/or distributed under this quality management system
ROHS	Compliant/Exempted
UK-ROHS	Compliant/Exempted



## Included Products

BSAMNT-3	–	Wide Profile Antenna Downtilt Mounting Kit for 2.4 - 4.5 in (60 - 115 mm) OD round members. Kit contains one scissor top bracket set and one bottom bracket set.
----------	---	--

## \* Footnotes

Performance Note	Severe environmental conditions may degrade optimum performance
------------------	---