

# EGZHHTT-65A-R6



14-port sector antenna, 2x 694-862 (R1), 2x 880-960 (R2), 2x 1427-2690 (Y2), 4x 1695-2180 (B1-B2), 4x 2490-2690 (Y1 & Y3) MHz, 65° HPBW, 6x RET. Y1 & Y3 share a common RET

- All Internal RET actuators are connected in “Cascaded SRET” configuration
- Supports re-configurable antenna sharing capability enabling control of the internal RET system using up to two separate RET compatible OEM radios
- Retractable tilt indicator rods

## OBSOLETE

This product was discontinued on: March 30, 2024

## General Specifications

<b>Antenna Type</b>	Sector
<b>Band</b>	Multiband
<b>Grounding Type</b>	RF connector inner conductor and body grounded to reflector and mounting bracket
<b>Performance Note</b>	Isolation, Intersystem, dB for 1427-1518 MHz, spec 1427-1496 MHz is better than 28dB and 1496-1518 MHz is better than 27dB   Outdoor usage   Wind loading figures are validated by wind tunnel measurements described in white paper WP-112534-EN
<b>Radome Material</b>	Fiberglass, UV resistant
<b>Reflector Material</b>	Aluminum
<b>RF Connector Interface</b>	4.3-10 Female
<b>RF Connector Location</b>	Bottom
<b>RF Connector Quantity, high band</b>	10
<b>RF Connector Quantity, mid band</b>	0
<b>RF Connector Quantity, low band</b>	4
<b>RF Connector Quantity, total</b>	14

## Remote Electrical Tilt (RET) Information

<b>RET Hardware</b>	CommRET v2
<b>RET Interface</b>	8-pin DIN Female   8-pin DIN Male
<b>RET Interface, quantity</b>	2 female   2 male

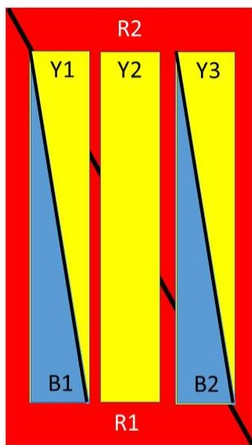
# EGZHHTT-65A-R6

<b>Input Voltage</b>	10–30 Vdc
<b>Internal RET</b>	High band (4)   Low band (2)
<b>Power Consumption, idle state, maximum</b>	1 W
<b>Power Consumption, normal conditions, maximum</b>	8 W
<b>Protocol</b>	3GPP/AISG 2.0 (Single RET)

## Dimensions

<b>Width</b>	395 mm   15.551 in
<b>Depth</b>	228 mm   8.976 in
<b>Length</b>	1500 mm   59.055 in
<b>Net Weight, without mounting kit</b>	30 kg   66.139 lb

## Array Layout



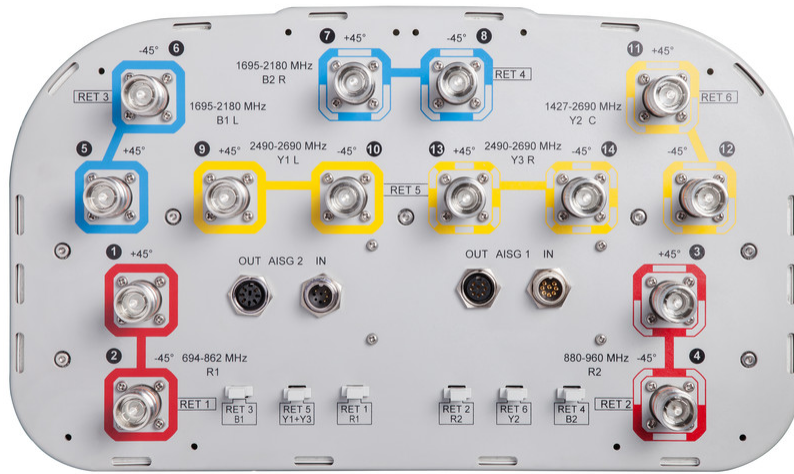
Array	Freq (MHz)	Conns	RET (SRET)	AISG RET UID
R1	694-862	1-2	1	CPxxxxxxxxxxxxxxxxR1
R2	880-960	3-4	2	CPxxxxxxxxxxxxxxxxR2
B1	1695-2180	5-6	3	CPxxxxxxxxxxxxxxxxB1
B2	1695-2180	7-8	4	CPxxxxxxxxxxxxxxxxB2
Y1	2490-2690	9-10	5	CPxxxxxxxxxxxxxxxxY1
Y3	2490-2690	13-14		
Y2	1427-2690	11-12	6	CPxxxxxxxxxxxxxxxxY2

Left      Right  
Bottom

(Sizes of colored boxes are not true depictions of array sizes)

## Port Configuration

# EGZHHTT-65A-R6



## Electrical Specifications

<b>Impedance</b>	50 ohm
<b>Operating Frequency Band</b>	1427 – 2690 MHz   1695 – 2180 MHz   2490 – 2690 MHz   694 – 862 MHz   880 – 960 MHz
<b>Polarization</b>	±45°
<b>Total Input Power, maximum</b>	800 W @ 50 °C

## Electrical Specifications

	R1	R2	B1&B2	B1&B2	Y1&Y3	Y2	Y2	Y2
<b>Frequency Band, MHz</b>	<b>694–862</b>	<b>880–960</b>	<b>1695–1880</b>	<b>1920–2180</b>	<b>2490–2690</b>	<b>1427–1518</b>	<b>1695–2180</b>	<b>2490–2690</b>
<b>Gain, dBi</b>	13.7	13.8	16.6	17.4	17.2	15.2	17.3	17.2
<b>Beamwidth, Horizontal, degrees</b>	66	64	69	64	61	71	63	59
<b>Beamwidth, Vertical, degrees</b>	16.2	13.8	6.9	6.2	5.1	9.3	7.4	5.5
<b>Beam Tilt, degrees</b>	2–17	2–17	2–12	2–12	2–12	2–12	2–12	2–12
<b>USLS (First Lobe), dB</b>	21	19	17	19	17	16	15	15
<b>Front-to-Back Ratio at 180°, dB</b>	32	32	30	32	29	29	36	29
<b>Isolation, Cross Polarization, dB</b>	28	28	28	28	28	28	28	28

# EGZHHTT-65A-R6

<b>Isolation, Inter-band, dB</b>	28	28	28	28	28	28	28	28
<b>VSWR   Return loss, dB</b>	1.5 14.0	1.5 14.0	1.5 14.0	1.5 14.0	1.5 14.0	1.5 14.0	1.5 14.0	1.5 14.0
<b>PIM, 3rd Order, 2 x 20 W, dBc</b>	-150	-150	-150	-150	-150	-150	-150	-150
<b>Input Power per Port at 50°C, maximum, watts</b>	300	300	250	250	150	250	200	200

## Mechanical Specifications

<b>Mechanical Tilt Range</b>	0°–18°
<b>Wind Loading @ Velocity, frontal</b>	289.0 N @ 150 km/h (65.0 lbf @ 150 km/h)
<b>Wind Loading @ Velocity, lateral</b>	209.0 N @ 150 km/h (47.0 lbf @ 150 km/h)
<b>Wind Loading @ Velocity, maximum</b>	495.0 N @ 150 km/h (111.3 lbf @ 150 km/h)
<b>Wind Loading @ Velocity, rear</b>	297.0 N @ 150 km/h (66.8 lbf @ 150 km/h)
<b>Wind Speed, maximum</b>	241 km/h (150 mph)

## Packaging and Weights

<b>Width, packed</b>	505 mm   19.882 in
<b>Depth, packed</b>	386 mm   15.197 in
<b>Length, packed</b>	1643 mm   64.685 in
<b>Weight, gross</b>	45 kg   99.208 lb

## Regulatory Compliance/Certifications

Agency	Classification
CE	Compliant with the relevant CE product directives
CHINA-ROHS	Above maximum concentration value
ISO 9001:2015	Designed, manufactured and/or distributed under this quality management system
ROHS	Compliant/Exempted
UK-ROHS	Compliant/Exempted



## Included Products

BSAMNT-4	–	Wide Profile Antenna Downtilt Mounting Kit for 2.4 - 4.5 in (60 - 115 mm) OD round members. Kit contains one scissor top bracket set and one bottom bracket set.
----------	---	--

## \* Footnotes

<b>Performance Note</b>	Severe environmental conditions may degrade optimum performance
-------------------------	---

# EGZHHTT-65A-R6

---



# BSAMNT-4



Wide Profile Antenna Downtilt Mounting Kit for 2.4 - 4.5 in (60 - 115 mm) OD round members. Kit contains one scissor top bracket set and one bottom bracket set.

## Product Classification

**Product Type** Downtilt mounting kit

## General Specifications

**Application** Outdoor

**Color** Silver

## Dimensions

**Compatible Diameter, maximum** 115 mm | 4.528 in

**Compatible Diameter, minimum** 60 mm | 2.362 in

**Weight, net** 6.5 kg | 14.33 lb

## Material Specifications

**Material Type** Galvanized steel

## Packaging and Weights

**Included** Brackets | Hardware

**Packaging quantity** 1

## Regulatory Compliance/Certifications

Agency	Classification
CHINA-ROHS	Below maximum concentration value
ISO 9001:2015	Designed, manufactured and/or distributed under this quality management system
REACH-SVHC	Compliant as per SVHC revision on <a href="http://www.andrew.com/ProductCompliance">www.andrew.com/ProductCompliance</a>
ROHS	Compliant
UK-ROHS	Compliant

