

# FFV4-65A-R6



12-port sector antenna, 4x 617-894 and 8x 1695-2690 MHz, 65°HPBW, 6x RET

- All Internal RET actuators are connected in "Cascaded SRET" configuration
- Excellent wind loading characteristics

## General Specifications

<b>Antenna Type</b>	Sector
<b>Band</b>	Multiband
<b>Color</b>	Light Gray (RAL 7035)
<b>Grounding Type</b>	RF connector inner conductor and body grounded to reflector and mounting bracket
<b>Performance Note</b>	Outdoor usage
<b>Radome Material</b>	Fiberglass, UV resistant
<b>Reflector Material</b>	Aluminum
<b>RF Connector Interface</b>	4.3-10 Female
<b>RF Connector Location</b>	Bottom
<b>RF Connector Quantity, mid band</b>	8
<b>RF Connector Quantity, low band</b>	4
<b>RF Connector Quantity, total</b>	12

## Remote Electrical Tilt (RET) Information

<b>RET Hardware</b>	CommRET v2
<b>RET Interface</b>	8-pin DIN Female   8-pin DIN Male
<b>RET Interface, quantity</b>	1 female   1 male
<b>Input Voltage</b>	10-30 Vdc
<b>Internal RET</b>	Low band (2)   Mid band (4)
<b>Power Consumption, active state, maximum</b>	8 W
<b>Power Consumption, idle state, maximum</b>	1 W
<b>Protocol</b>	3GPP/AISG 2.0 (Single RET)

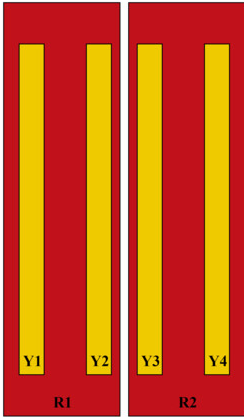
## Dimensions

<b>Width</b>	498 mm   19.606 in
--------------	--------------------

# FFV4-65A-R6

<b>Depth</b>	197 mm   7.756 in
<b>Length</b>	1499 mm   59.016 in
<b>Net Weight, antenna only</b>	28.6 kg   63.052 lb

## Array Layout

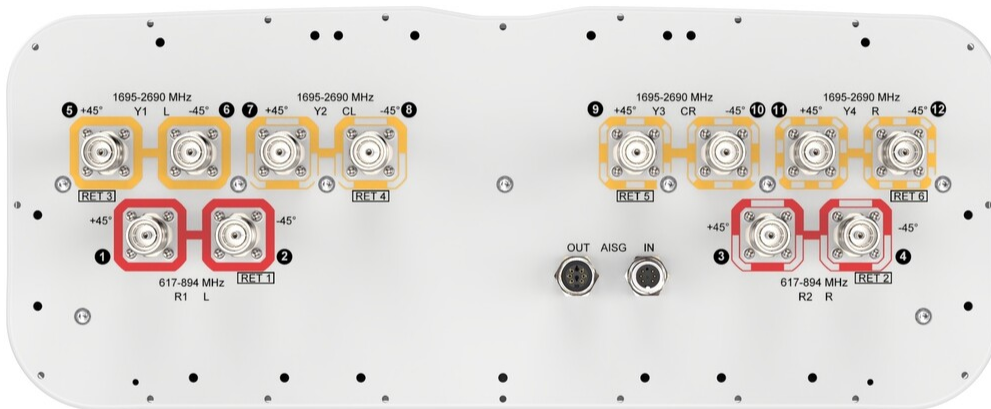


Array ID	Frequency (MHz)	RF Connector	RET (SRET)	AISG No.	AISG RET UID
R1	617-894	1 - 2	1	AISG1	CPxxxxxxxxxxxxxxxxR1
R2	617-894	3 - 4	2	AISG1	CPxxxxxxxxxxxxxxxxR2
Y1	1695-2690	5 - 6	3	AISG1	CPxxxxxxxxxxxxxxxxY1
Y2	1695-2690	7 - 8	4	AISG1	CPxxxxxxxxxxxxxxxxY2
Y3	1695-2690	9 - 10	5	AISG1	CPxxxxxxxxxxxxxxxxY3
Y4	1695-2690	11 - 12	6	AISG1	CPxxxxxxxxxxxxxxxxY4

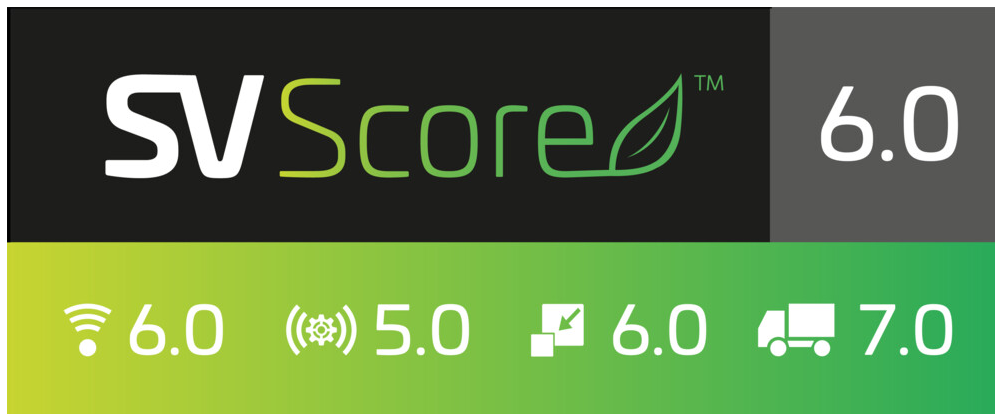
(Sizes of colored boxes are not true depictions of array sizes)

## Port Configuration

# FFV4-65A-R6



## Logo Image



## Electrical Specifications

# FFV4-65A-R6

<b>Impedance</b>	50 ohm
<b>Operating Frequency Band</b>	1695 – 2690 MHz   617 – 894 MHz
<b>Polarization</b>	±45°
<b>Total Input Power, maximum</b>	1,400 W @ 50 °C

## Electrical Specifications

	<b>R1,R2</b>	<b>R1,R2</b>	<b>Y1-Y4</b>	<b>Y1-Y4</b>	<b>Y1-Y4</b>	<b>Y1-Y4</b>	<b>Y1-Y4</b>
<b>Frequency Band, MHz</b>	<b>617–698</b>	<b>698–894</b>	<b>1695–1880</b>	<b>1850–1990</b>	<b>1920–2200</b>	<b>2300–2500</b>	<b>2500–2690</b>
<b>RF Port</b>	1-4	1-4	5-12	5-12	5-12	5-12	5-12
<b>Gain, dBi</b>	12.7	13.5	16.6	16.9	17.3	17.5	17.7
<b>Beamwidth, Horizontal, degrees</b>	70	59	64	65	61	60	55
<b>Beamwidth, Vertical, degrees</b>	18.1	15.3	6.6	6.2	5.9	5.3	5.1
<b>Beam Tilt, degrees</b>	4–18	4–18	2–12	2–12	2–12	2–12	2–12
<b>USLS (First Lobe), dB</b>	18	18	16	18	18	19	17
<b>Front-to-Back Ratio at 180°, dB</b>	30	30	32	33	33	30	28
<b>Front-to-Back Total Power at 180° ± 30°, dB</b>	21	22	24	25	25	24	22
<b>Isolation, Cross Polarization, dB</b>	25	25	25	25	25	25	25
<b>Isolation, Inter-band, dB</b>	25	25	25	25	25	25	25
<b>VSWR   Return loss, dB</b>	1.5 14.0	1.5 14.0	1.5 14.0	1.5 14.0	1.5 14.0	1.5 14.0	1.5 14.0
<b>PIM, 3rd Order, 2 x 20 W, dBc</b>	-150	-150	-150	-150	-150	-150	-150
<b>Input Power per Port at 50°C, maximum, watts</b>	250	250	200	200	200	200	200

## Mechanical Specifications

<b>Wind Loading @ Velocity, frontal</b>	583.0 N @ 150 km/h (131.1 lbf @ 150 km/h)
<b>Wind Loading @ Velocity, lateral</b>	188.0 N @ 150 km/h (42.3 lbf @ 150 km/h)
<b>Wind Loading @ Velocity, maximum</b>	818.0 N @ 150 km/h (183.9 lbf @ 150 km/h)
<b>Wind Loading @ Velocity, rear</b>	462.0 N @ 150 km/h (103.9 lbf @ 150 km/h)
<b>Wind Speed, maximum</b>	241 km/h (150 mph)

## Packaging and Weights

<b>Width, packed</b>	565 mm   22.244 in
----------------------	--------------------

# FFV4-65A-R6

---

<b>Depth, packed</b>	309 mm   12.165 in
<b>Length, packed</b>	1686 mm   66.378 in
<b>Weight, gross</b>	41.5 kg   91.492 lb

## Regulatory Compliance/Certifications

<b>Agency</b>	<b>Classification</b>
CHINA-ROHS	Below maximum concentration value
ISO 9001:2015	Designed, manufactured and/or distributed under this quality management system
REACH-SVHC	Compliant as per SVHC revision on <a href="http://www.commscope.com/ProductCompliance">www.commscope.com/ProductCompliance</a>
ROHS	Compliant
UK-ROHS	Compliant/Exempted



## Included Products

- BSAMNT-3 – Wide Profile Antenna Downtilt Mounting Kit for 2.4 - 4.5 in (60 - 115 mm) OD round members. Kit contains one scissor top bracket set and one bottom bracket set.

## \* Footnotes

**Performance Note** Severe environmental conditions may degrade optimum performance

# BSAMNT-3



Wide Profile Antenna Downtilt Mounting Kit for 2.4 - 4.5 in (60 - 115 mm) OD round members. Kit contains one scissor top bracket set and one bottom bracket set.

## Product Classification

**Product Type** Downtilt mounting kit

## General Specifications

**Application** Outdoor

**Color** Silver

## Dimensions

**Compatible Diameter, maximum** 115 mm | 4.528 in

**Compatible Diameter, minimum** 60 mm | 2.362 in

**Weight, net** 6.2 kg | 13.669 lb

## Material Specifications

**Material Type** Galvanized steel

## Packaging and Weights

**Included** Brackets | Hardware

**Packaging quantity** 1

**Weight, gross** 6.4 kg | 14.11 lb

## Regulatory Compliance/Certifications

Agency	Classification
CE	Compliant with the relevant CE product directives
CHINA-ROHS	Below maximum concentration value
ISO 9001:2015	Designed, manufactured and/or distributed under this quality management system
REACH-SVHC	Compliant as per SVHC revision on <a href="http://www.commscope.com/ProductCompliance">www.commscope.com/ProductCompliance</a>
ROHS	Compliant
UK-ROHS	Compliant

# BSAMNT-3

---

