

HHTTV-65A-R3



10-Port Antenna, 4x 1695–2200 (HB1), 4x 2490–2690 (HB2) and 2x 1695–2690 (HB3) MHz, 65° horizontal beamwidth, 3x Internal RET

- Provides a future-ready antenna solution with flexibility to reassign antenna, for example GSM 1800 service to 2.6GHz LTE at a later date
- One RET for H-bands, one RET for T-bands, one RET for V-band
- Excellent for 4x MIMO applications and maximizing capacity
- Employs state-of-the-art ultra wideband technology providing excellent RF performance in all bands

OBSOLETE

This product was discontinued on: March 30, 2024

General Specifications

Antenna Type	Sector
Band	Single band
Color	Light Gray (RAL 7035)
Grounding Type	RF connector inner conductor and body grounded to reflector and mounting bracket
Performance Note	Outdoor usage
Radome Material	Fiberglass, UV resistant
Radiator Material	Low loss circuit board
RF Connector Interface	4.3-10 Female
RF Connector Location	Bottom
RF Connector Quantity, high band	10
RF Connector Quantity, mid band	0
RF Connector Quantity, low band	0
RF Connector Quantity, total	10

Remote Electrical Tilt (RET) Information

RET Interface	8-pin DIN Female 8-pin DIN Male
RET Interface, quantity	1 female 1 male
Internal RET	High band (3)

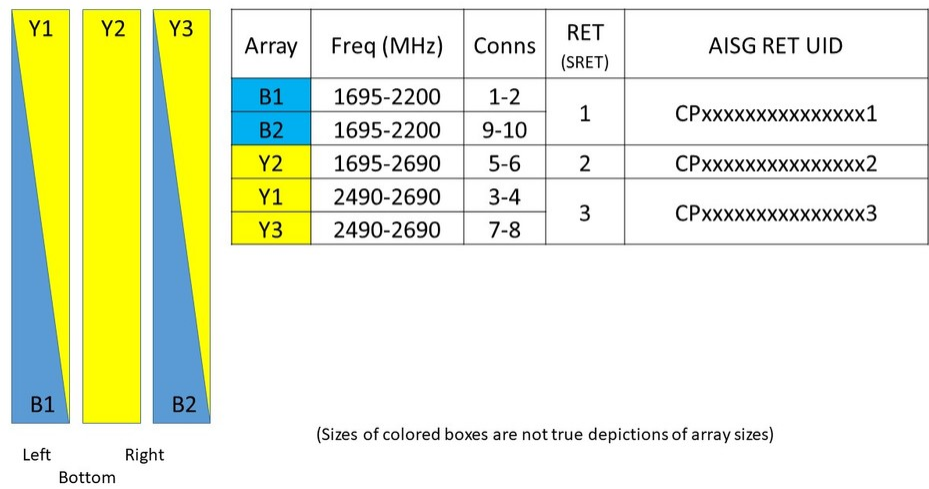
HHTTV-65A-R3

Power Consumption, idle state, maximum	1 W
Power Consumption, normal conditions, maximum	10 W
Protocol	3GPP/AISG 2.0 (Single RET)

Dimensions

Width	504 mm 19.843 in
Depth	118 mm 4.646 in
Length	1322 mm 52.047 in
Net Weight, without mounting kit	21 kg 46.297 lb

Array Layout



Port Configuration

HHTTV-65A-R3



Electrical Specifications

Impedance	50 ohm
Operating Frequency Band	1695 – 2180 MHz 1695 – 2690 MHz 2490 – 2690 MHz
Polarization	±45°
Total Input Power, maximum	500 W @ 50 °C

Electrical Specifications

	HB1	HB1	HB2	HB3	HB3	HB3
Frequency Band, MHz	1695–1880	1920–2200	2490–2690	1695–1920	1920–2180	2490–2690
Gain, dBi	16.7	17.2	17.2	17.2	17.7	17.5
Beamwidth, Horizontal, degrees	63	63	58	62	65	60
Beamwidth, Vertical, degrees	7.5	6.6	5.5	7.4	6.5	5.3
Beam Tilt, degrees	2–12	2–12	2–12	2–12	2–12	2–12
USLS (First Lobe), dB	19	20	21	17	17	19
Front-to-Back Ratio at 180°, dB	30	30	33	33	32	33
Isolation, Cross Polarization, dB	28	28	28	28	28	28
Isolation, Inter-band, dB	28	28	28	28	28	28

HHTTV-65A-R3

VSWR Return loss, dB	1.5 14.0	1.5 14.0	1.5 14.0	1.5 14.0	1.5 14.0	1.5 14.0
PIM, 3rd Order, 2 x 20 W, dBc	-150	-150	-150	-150	-150	-150
Input Power per Port at 50°C, maximum, watts	300	300	250	300	300	250

Mechanical Specifications

Mechanical Tilt Range	0°–19°
Wind Loading @ Velocity, frontal	855.0 N @ 150 km/h (192.2 lbf @ 150 km/h)
Wind Loading @ Velocity, lateral	141.0 N @ 150 km/h (31.7 lbf @ 150 km/h)
Wind Loading @ Velocity, rear	872.0 N @ 150 km/h (196.0 lbf @ 150 km/h)
Wind Speed, maximum	241 km/h (150 mph)

Packaging and Weights

Width, packed	613 mm 24.134 in
Depth, packed	226 mm 8.898 in
Length, packed	1450 mm 57.087 in
Weight, gross	29.4 kg 64.816 lb

Regulatory Compliance/Certifications

Agency	Classification
ISO 9001:2015	Designed, manufactured and/or distributed under this quality management system

Included Products

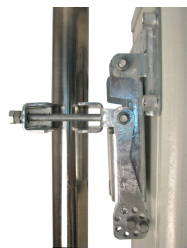
BSAMNT-3	–	Wide Profile Antenna Downtilt Mounting Kit for 2.4 - 4.5 in (60 - 115 mm) OD round members. Kit contains one scissor top bracket set and one bottom bracket set.
----------	---	--

* Footnotes

Performance Note	Severe environmental conditions may degrade optimum performance
-------------------------	---



BSAMNT-3



Wide Profile Antenna Downtilt Mounting Kit for 2.4 - 4.5 in (60 - 115 mm) OD round members. Kit contains one scissor top bracket set and one bottom bracket set.

Product Classification

Product Type Downtilt mounting kit

General Specifications

Application Outdoor

Color Silver

Dimensions

Compatible Diameter, maximum 115 mm | 4.528 in

Compatible Diameter, minimum 60 mm | 2.362 in

Weight, net 6.2 kg | 13.669 lb

Material Specifications

Material Type Galvanized steel

Packaging and Weights

Included Brackets | Hardware

Packaging quantity 1

Weight, gross 6.4 kg | 14.11 lb

Regulatory Compliance/Certifications

Agency	Classification
CE	Compliant with the relevant CE product directives
CHINA-ROHS	Below maximum concentration value
ISO 9001:2015	Designed, manufactured and/or distributed under this quality management system
REACH-SVHC	Compliant as per SVHC revision on www.andrew.com/ProductCompliance
ROHS	Compliant
UK-ROHS	Compliant

