

RRVV-65B-R4-V2

8-port sector antenna, 4x 694–960 and 4x 1695–2690 MHz, 65° HPBW, 4x RET



- All Internal RET actuators are connected in “Cascaded SRET” configuration
- Uses the 4.3-10 connector which is 40 percent smaller than the 7-16 DIN connector

General Specifications

Antenna Type	Sector
Band	Multiband
Grounding Type	RF connector inner conductor and body grounded to reflector and mounting bracket
Performance Note	Outdoor usage Wind loading figures are validated by wind tunnel measurements described in white paper WP-112534-EN
Radome Material	Fiberglass, UV resistant
Radiator Material	Low loss circuit board
Reflector Material	Aluminum
RF Connector Interface	4.3-10 Female
RF Connector Location	Bottom
RF Connector Quantity, high band	4
RF Connector Quantity, low band	4
RF Connector Quantity, total	8

Remote Electrical Tilt (RET) Information

RET Hardware	CommRET v2
RET Interface	8-pin DIN Female 8-pin DIN Male
RET Interface, quantity	1 female 1 male
Input Voltage	10–30 Vdc
Internal RET	High band (2) Low band (2)
Power Consumption, idle state, maximum	1 W
Power Consumption, normal conditions, maximum	8 W
Protocol	3GPP/AISG 2.0 (Single RET)

RRVV-65B-R4-V2

Dimensions

Width	498 mm 19.606 in
Depth	197 mm 7.756 in
Length	1828 mm 71.969 in
Net Weight, without mounting kit	35.5 kg 78.264 lb

Array Layout



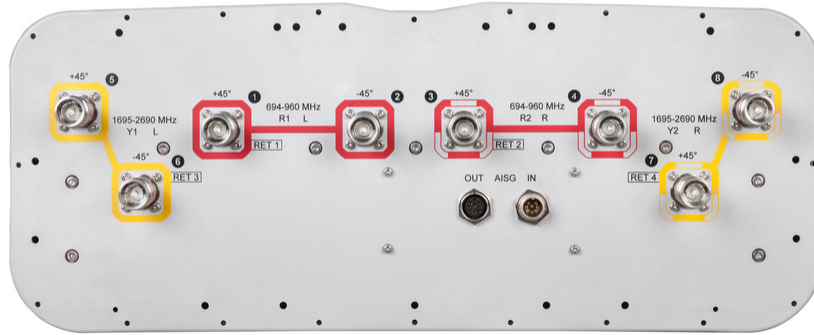
Array	Freq (MHz)	Conns	RET (SRET)	AISG RET UID
R1	694-960	1-2	1	CPxxxxxxxxxxxxxxxxR1
R2	694-960	3-4	2	CPxxxxxxxxxxxxxxxxR2
Y1	1695-2690	5-6	3	CPxxxxxxxxxxxxxxxxY1
Y2	1695-2690	7-8	4	CPxxxxxxxxxxxxxxxxY2

Left Bottom Right

(Sizes of colored boxes are not true depictions of array sizes)

Port Configuration

RRVV-65B-R4-V2



Electrical Specifications

Impedance	50 ohm
Operating Frequency Band	1695 – 2690 MHz 694 – 960 MHz
Polarization	±45°
Total Input Power, maximum	900 W @ 50 °C

Electrical Specifications

Frequency Band, MHz	694–790	790–890	890–960	1695–1880	1850–1990	1920–2180	2300–2500	2500–2690
Gain, dBi	14.6	15	15.2	18.6	18.7	18.9	19.3	19.3
Beamwidth, Horizontal, degrees	69	66	61	58	60	61	59	65
Beamwidth, Vertical, degrees	11.7	10.5	9.7	5.5	5.2	5	4.4	4.1
Beam Tilt, degrees	2–12	2–12	2–12	2–12	2–12	2–12	2–12	2–12
USLS (First Lobe), dB	17	18	17	19	20	22	23	22
Front-to-Back Ratio at 180°, dB	32	33	33	37	39	38	33	33
Isolation, Cross Polarization, dB	25	25	25	27	27	27	27	27
Isolation, Inter-band, dB	25	25	25	27	27	27	27	27
VSWR Return loss, dB	1.5 14.0	1.5 14.0	1.5 14.0	1.5 14.0	1.5 14.0	1.5 14.0	1.5 14.0	1.5 14.0

RRVV-65B-R4-V2

PIM, 3rd Order, 2 x 20 W, dBc	-150	-150	-150	-150	-150	-150	-150	-150
Input Power per Port at 50°C, maximum, watts	300	300	300	250	250	250	250	200

Mechanical Specifications

Mechanical Tilt Range	0°–17°
Wind Loading @ Velocity, frontal	685.0 N @ 150 km/h (154.0 lbf @ 150 km/h)
Wind Loading @ Velocity, lateral	232.0 N @ 150 km/h (52.2 lbf @ 150 km/h)
Wind Loading @ Velocity, maximum	889.0 N @ 150 km/h (199.9 lbf @ 150 km/h)
Wind Loading @ Velocity, rear	564.0 N @ 150 km/h (126.8 lbf @ 150 km/h)
Wind Speed, maximum	241 km/h (150 mph)

Packaging and Weights

Width, packed	608 mm 23.937 in
Depth, packed	352 mm 13.858 in
Length, packed	2010 mm 79.134 in
Weight, gross	49.4 kg 108.908 lb

Regulatory Compliance/Certifications

Agency	Classification
CE	Compliant with the relevant CE product directives
CHINA-ROHS	Above maximum concentration value
ISO 9001:2015	Designed, manufactured and/or distributed under this quality management system
ROHS	Compliant/Exempted
UK-ROHS	Compliant/Exempted



Included Products

BSAMNT-3	–	Wide Profile Antenna Downtilt Mounting Kit for 2.4 - 4.5 in (60 - 115 mm) OD round members. Kit contains one scissor top bracket set and one bottom bracket set.
----------	---	--

* Footnotes

Performance Note	Severe environmental conditions may degrade optimum performance
-------------------------	---