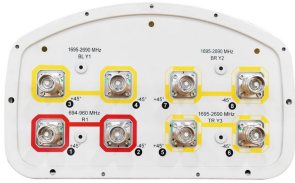


RV365D-M-V2



8-port sector antenna, 2x 694–960 and 6x 1695–2690 MHz, 65° HPBW, RET compatible.

- Includes manually adjustable electrical tilt
- Can be upgraded to RET capable by installing up to 4 x ACCURET-A20 RET Actuators (rear mounted) - purchase separately

OBSOLETE

This product was discontinued on: **November 30, 2023**

Replaced By:

RV3-65D-R4-V3

8-port sector antenna, 2x 694–960 and 6x 1695–2690 MHz, 65° HPBW, 4x IntRET. Antenna rear wind loading 506N @ 150km/h

General Specifications

| | |
|---|--|
| Antenna Type | Sector |
| Band | Multiband |
| Grounding Type | RF connector inner conductor and body grounded to reflector and mounting bracket |
| Performance Note | Outdoor usage Wind loading figures are validated by wind tunnel measurements described in white paper WP-112534-EN |
| Radome Material | Fiberglass, UV resistant |
| Radiator Material | Low loss circuit board |
| Reflector Material | Aluminum |
| RF Connector Interface | 4.3-10 Female |
| RF Connector Location | Bottom |
| RF Connector Quantity, high band | 6 |
| RF Connector Quantity, low band | 2 |
| RF Connector Quantity, total | 8 |

Dimensions

| | |
|---------------|----------------------|
| Width | 301 mm 11.85 in |
| Depth | 180 mm 7.087 in |
| Length | 2645 mm 104.134 in |

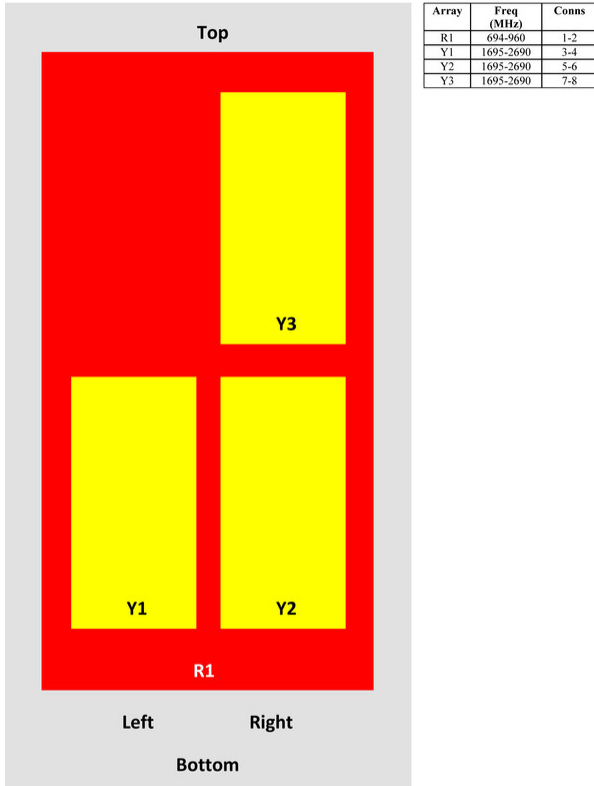
RV365D-M-V2

Net Weight, without mounting kit

31.5 kg | 69.446 lb

Array Layout

RV365D-M, RV365D-3X2



View from the front of the antenna

(Sizes of colored boxes are not true depictions of array sizes)

Electrical Specifications

| | |
|-----------------------------------|---------------------------------|
| Impedance | 50 ohm |
| Operating Frequency Band | 1695 – 2690 MHz 694 – 960 MHz |
| Polarization | ±45° |
| Total Input Power, maximum | 1,000 W @ 50 °C |

Electrical Specifications

| Frequency Band, MHz | 694–790 | 790–890 | 890–960 | 1695–1920 | 1920–2200 | 2300–2500 | 2500–2690 |
|---------------------|---------|---------|---------|-----------|-----------|-----------|-----------|
| Gain, dBi | 16.5 | 16.8 | 16.7 | 17 | 17.9 | 18.1 | 18.1 |

RV365D-M-V2

| | | | | | | | |
|---|----------|----------|----------|----------|----------|----------|----------|
| Beamwidth, Horizontal, degrees | 70 | 69 | 66 | 61 | 60 | 62 | 60 |
| Beamwidth, Vertical, degrees | 8.1 | 7.4 | 6.8 | 7.5 | 6.6 | 5.7 | 5.4 |
| Beam Tilt, degrees | 0–10 | 0–10 | 0–10 | 2–12 | 2–12 | 2–12 | 2–12 |
| USLS (First Lobe), dB | 15 | 20 | 16 | 19 | 15 | 16 | 15 |
| Front-to-Back Ratio at 180°, dB | 28 | 34 | 33 | 30 | 31 | 34 | 33 |
| Isolation, Cross Polarization, dB | 28 | 28 | 28 | 25 | 25 | 25 | 25 |
| Isolation, Inter-band, dB | 30 | 30 | 30 | 30 | 30 | 30 | 30 |
| VSWR Return loss, dB | 1.5 14.0 | 1.5 14.0 | 1.5 14.0 | 1.5 14.0 | 1.5 14.0 | 1.5 14.0 | 1.5 14.0 |
| PIM, 3rd Order, 2 x 20 W, dBc | -153 | -153 | -153 | -153 | -153 | -153 | -153 |
| Input Power per Port at 50°C, maximum, watts | 300 | 300 | 300 | 250 | 250 | 200 | 200 |

Electrical Specifications, BASTA

| Frequency Band, MHz | 694–790 | 790–890 | 890–960 | 1695–1920 | 1920–2200 | 2300–2500 | 2500–2690 |
|--|--------------------------------|--------------------------------|--------------------------------|--------------------------------|--------------------------------|--------------------------------|--------------------------------|
| Gain by all Beam Tilts, average, dBi | 16.2 | 16.6 | 16.5 | 16.5 | 17.4 | 17.7 | 17.7 |
| Gain by all Beam Tilts Tolerance, dB | ±0.4 | ±0.3 | ±0.4 | ±0.8 | ±0.6 | ±0.5 | ±0.6 |
| Gain by Beam Tilt, average, dBi | 0° 16.1 5° 16.3 10° 16.2 | 0° 16.5 5° 16.7 10° 16.4 | 0° 16.6 5° 16.6 10° 16.2 | 2° 16.4 7° 16.6 12° 16.3 | 2° 17.3 7° 17.6 12° 17.2 | 2° 17.5 7° 17.9 12° 17.4 | 2° 17.4 7° 17.9 12° 17.4 |
| Beamwidth, Horizontal Tolerance, degrees | ±1.8 | ±1.1 | ±2.4 | ±5.4 | ±4.7 | ±5.8 | ±5.7 |
| Beamwidth, Vertical Tolerance, degrees | ±0.4 | ±0.4 | ±0.4 | ±0.6 | ±0.6 | ±0.4 | ±0.3 |
| USLS, beampeak to 20° above beampeak, dB | 14 | 15 | 14 | 11 | 14 | 13 | 12 |
| Front-to-Back Total Power at 180° ± 30°, dB | 23 | 25 | 23 | 24 | 25 | 26 | 25 |
| CPR at Boresight, dB | 20 | 22 | 21 | 15 | 17 | 18 | 18 |
| CPR at Sector, dB | 13 | 16 | 12 | 9 | 8 | 6 | 9 |

Mechanical Specifications

| | |
|---|---|
| Wind Loading @ Velocity, frontal | 433.0 N @ 150 km/h (97.3 lbf @ 150 km/h) |
| Wind Loading @ Velocity, lateral | 367.0 N @ 150 km/h (82.5 lbf @ 150 km/h) |
| Wind Loading @ Velocity, maximum | 834.0 N @ 150 km/h (187.5 lbf @ 150 km/h) |
| Wind Loading @ Velocity, rear | 439.0 N @ 150 km/h (98.7 lbf @ 150 km/h) |

RV365D-M-V2

Wind Speed, maximum 241 km/h (150 mph)

Packaging and Weights

Width, packed 409 mm | 16.102 in
Depth, packed 309 mm | 12.165 in
Length, packed 2894 mm | 113.937 in
Weight, gross 51.1 kg | 112.656 lb

Regulatory Compliance/Certifications

| Agency | Classification |
|---------------|--|
| CHINA-ROHS | Below maximum concentration value |
| ISO 9001:2015 | Designed, manufactured and/or distributed under this quality management system |
| REACH-SVHC | Compliant as per SVHC revision on www.commscope.com/ProductCompliance |
| ROHS | Compliant |
| UK-ROHS | Compliant |



Included Products

- BSAMNT-3 – Wide Profile Antenna Downtilt Mounting Kit for 2.4 - 4.5 in (60 - 115 mm) OD round members. Kit contains one scissor top bracket set and one bottom bracket set.
- BSAMNT-M – Middle Downtilt Mounting Kit for Long Antennas for 2.4 - 4.5 in (60 - 115 mm) OD round members. Kit contains one scissor bracket set.

* Footnotes

Performance Note Severe environmental conditions may degrade optimum performance