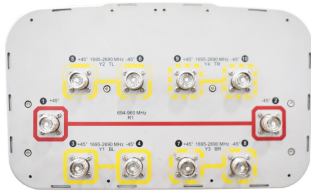


# RV4-65D-M-V2



10-port sector antenna, 2x 694–960 and 8x 1695–2690 MHz, 65° HPBW, AccuRET capable

## OBSOLETE

This product was discontinued on: November 30, 2023

### Replaced By:

RV4-65B-R5-V2

10-port sector antenna, 2x 694–960 and 8x 1695–2690 MHz, 65° HPBW, 5x RET

## General Specifications

<b>Antenna Type</b>	Sector
<b>Band</b>	Multiband
<b>Grounding Type</b>	RF connector inner conductor and body grounded to reflector and mounting bracket
<b>Performance Note</b>	Outdoor usage   Wind loading figures are validated by wind tunnel measurements described in white paper WP-112534-EN
<b>Radome Material</b>	Fiberglass, UV resistant
<b>Radiator Material</b>	Low loss circuit board
<b>Reflector Material</b>	Aluminum
<b>RF Connector Interface</b>	4.3-10 Female
<b>RF Connector Location</b>	Bottom
<b>RF Connector Quantity, high band</b>	8
<b>RF Connector Quantity, low band</b>	2
<b>RF Connector Quantity, total</b>	10

## Dimensions

<b>Width</b>	350 mm   13.78 in
<b>Depth</b>	208 mm   8.189 in
<b>Length</b>	2688 mm   105.827 in
<b>Net Weight, without mounting kit</b>	31 kg   68.343 lb

## Electrical Specifications

# RV4-65D-M-V2

<b>Impedance</b>	50 ohm
<b>Operating Frequency Band</b>	1695 – 2690 MHz   694 – 960 MHz
<b>Polarization</b>	±45°
<b>Total Input Power, maximum</b>	800 W @ 50 °C

## Electrical Specifications

Frequency Band, MHz	694–790	790–890	890–960	1695–1880	1920–2200	2300–2500	2500–2690
<b>Gain, dBi</b>	16.6	17.2	17.4	16.8	17.5	18.1	18
<b>Beamwidth, Horizontal, degrees</b>	67	65	63	62	62	62	62
<b>Beamwidth, Vertical, degrees</b>	8.2	7.4	6.8	7.5	6.5	5.7	5.4
<b>Beam Tilt, degrees</b>	0–10	0–10	0–10	2–12	2–12	2–12	2–12
<b>USLS (First Lobe), dB</b>	19	24	22	15	16	15	15
<b>Front-to-Back Ratio at 180°, dB</b>	32	35	38	31	35	37	36
<b>Isolation, Cross Polarization, dB</b>	28	28	28	28	28	28	28
<b>Isolation, Inter-band, dB</b>	30	30	30	30	30	30	30
<b>VSWR   Return loss, dB</b>	1.5 14.0	1.5 14.0	1.5 14.0	1.5 14.0	1.5 14.0	1.5 14.0	1.5 14.0
<b>PIM, 3rd Order, 2 x 20 W, dBc</b>	-150	-150	-150	-150	-150	-150	-150
<b>Input Power per Port at 50°C, maximum, watts</b>	250	250	250		200	200	200

## Electrical Specifications, BASTA

Frequency Band, MHz	694–790	790–890	890–960	1695–1880	1920–2200	2300–2500	2500–2690
<b>Gain by all Beam Tilts, average, dBi</b>	16.4	16.9	17.2	16.3	17.1	17.7	17.6
<b>Gain by all Beam Tilts Tolerance, dB</b>	±0.3	±0.3	±0.2	±0.7	±0.6	±0.6	±0.6
<b>Gain by Beam Tilt, average, dBi</b>	0° 16.2 5° 16.5 10° 16.5	0° 16.6 5° 17.0 10° 16.9	0° 17.0 5° 17.4 10° 17.2	2° 16.2 7° 16.4 12° 16.2	2° 16.8 7° 17.2 12° 17.0	2° 17.3 7° 17.8 12° 17.7	2° 17.3 7° 17.7 12° 17.4
<b>Beamwidth, Horizontal Tolerance, degrees</b>	±1.1	±1.5	±1.4	±3.4	±2.1	±3.5	±3.5
<b>Beamwidth, Vertical Tolerance, degrees</b>	±0.5	±0.4	±0.3	±0.5	±0.5	±0.3	±0.3
<b>USLS, beampeak to 20° above beampeak, dB</b>	16	16	17	13	14	14	13
<b>Front-to-Back Total Power at</b>	26	25	25	27	28	28	28

# RV4-65D-M-V2

180° ± 30°, dB

CPR at Boresight, dB	17	20	20	18	21	19	17
CPR at Sector, dB	11	10	10	10	11	8	7

## Mechanical Specifications

Wind Loading @ Velocity, frontal	477.0 N @ 150 km/h (107.2 lbf @ 150 km/h)
Wind Loading @ Velocity, lateral	409.0 N @ 150 km/h (91.9 lbf @ 150 km/h)
Wind Loading @ Velocity, maximum	1,010.0 N @ 150 km/h (227.1 lbf @ 150 km/h)
Wind Loading @ Velocity, rear	506.0 N @ 150 km/h (113.8 lbf @ 150 km/h)
Wind Speed, maximum	241 km/h (150 mph)

## Packaging and Weights

Width, packed	460 mm   18.11 in
Depth, packed	350 mm   13.78 in
Length, packed	2830 mm   111.417 in
Weight, gross	47.5 kg   104.719 lb

## Regulatory Compliance/Certifications

Agency	Classification
ISO 9001:2015	Designed, manufactured and/or distributed under this quality management system



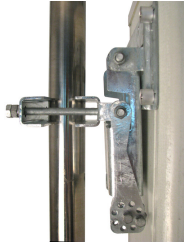
## Included Products

BSAMNT-3	–	Wide Profile Antenna Downtilt Mounting Kit for 2.4 - 4.5 in (60 - 115 mm) OD round members. Kit contains one scissor top bracket set and one bottom bracket set.
----------	---	--

## \* Footnotes

Performance Note	Severe environmental conditions may degrade optimum performance
------------------	---

# BSAMNT-3



Wide Profile Antenna Downtilt Mounting Kit for 2.4 - 4.5 in (60 - 115 mm) OD round members. Kit contains one scissor top bracket set and one bottom bracket set.

## Product Classification

**Product Type** Downtilt mounting kit

## General Specifications

**Application** Outdoor

**Color** Silver

## Dimensions

**Compatible Diameter, maximum** 115 mm | 4.528 in

**Compatible Diameter, minimum** 60 mm | 2.362 in

**Weight, net** 6.2 kg | 13.669 lb

## Material Specifications

**Material Type** Galvanized steel

## Packaging and Weights

**Included** Brackets | Hardware

**Packaging quantity** 1

**Weight, gross** 6.4 kg | 14.11 lb

## Regulatory Compliance/Certifications

Agency	Classification
CE	Compliant with the relevant CE product directives
CHINA-ROHS	Below maximum concentration value
ISO 9001:2015	Designed, manufactured and/or distributed under this quality management system
REACH-SVHC	Compliant as per SVHC revision on <a href="http://www.commscope.com/ProductCompliance">www.commscope.com/ProductCompliance</a>
ROHS	Compliant
UK-ROHS	Compliant

# BSAMNT-3

---

