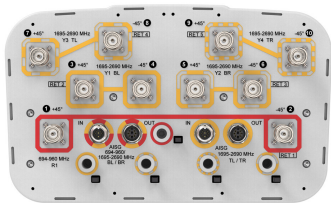


RV4-65D-R5-V2



10-port sector antenna, 2x 694–960 and 8x 1695–2690 MHz, 65° HPBW, 5x RET with manual override

- All Internal RET actuators are connected in “Cascaded SRET” configuration
- Uses the 4.3-10 connector which is 40 percent smaller than the 7-16 DIN connector
- Integrated Internal Remote Electrical Tilt (RET), with independent control of electrical tilt with manual override on all arrays

OBSOLETE

This product was discontinued on: February 28, 2025

Replaced By:

RV4-65D-R5-V6 10-port sector antenna, 2x 694–960 and 8x 1695–2690 MHz, 65° HPBW, 5x RET

General Specifications

| | |
|----------------------------------|--|
| Antenna Type | Sector |
| Band | Multiband |
| Color | Light Gray (RAL 7035) |
| Grounding Type | RF connector inner conductor and body grounded to reflector and mounting bracket |
| Performance Note | Outdoor usage Wind loading figures are validated by wind tunnel measurements described in white paper WP-112534-EN |
| Radome Material | Fiberglass, UV resistant |
| Reflector Material | Aluminum |
| RF Connector Interface | 4.3-10 Female |
| RF Connector Location | Bottom |
| RF Connector Quantity, high band | 8 |
| RF Connector Quantity, mid band | 0 |
| RF Connector Quantity, low band | 2 |
| RF Connector Quantity, total | 10 |

Remote Electrical Tilt (RET) Information

| | |
|---------------|--|
| RET Interface | 4x 8 pin connector as per IEC 60130-9 Daisy chain in: Male / Daisy chain out: Female Pin3: RS485A(AISG_B), Pin5: RS485B(AISG_A), Pin6: DC 10~30V, Pin7: DC_ Return |
|---------------|--|

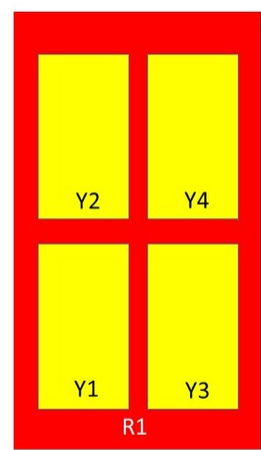
RV4-65D-R5-V2

| | |
|--|------------------------------|
| RET Interface, quantity | 2 female 2 male |
| Input Voltage | 10–30 Vdc |
| Internal RET | High band (4) Low band (1) |
| Power Consumption, active state, maximum | 8 W |
| Power Consumption, idle state, maximum | 1 W |
| Protocol | 3GPP/AISG 2.0 (Single RET) |

Dimensions

| | |
|----------------------------------|----------------------|
| Width | 350 mm 13.78 in |
| Depth | 208 mm 8.189 in |
| Length | 2688 mm 105.827 in |
| Net Weight, without mounting kit | 34 kg 74.957 lb |

Array Layout



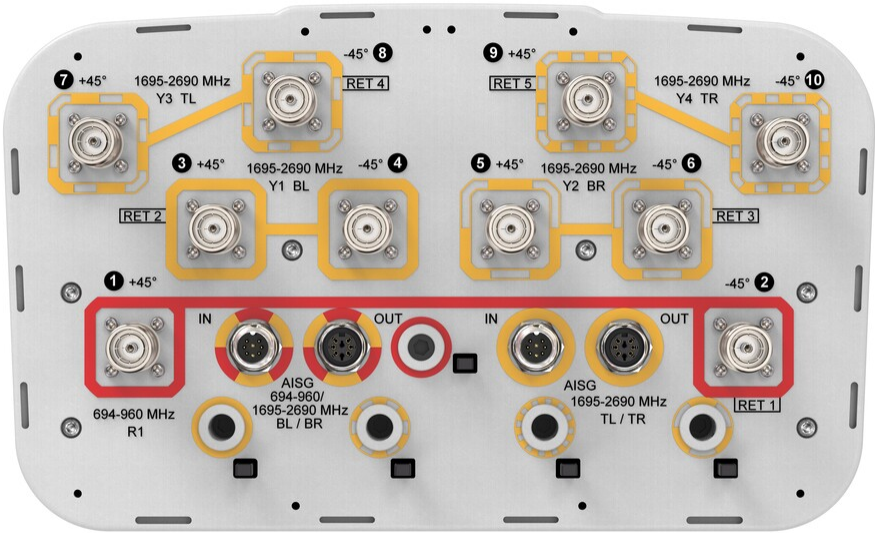
Left Right
Bottom

(Sizes of colored boxes are not true depictions of array sizes)

| Array | Freq (MHz) | Conns | RET (SRET) | AISG RET UID |
|-------|------------|-------|------------|----------------------|
| R1 | 694-960 | 1-2 | 1 | CPxxxxxxxxxxxxxxxxx1 |
| Y1 | 1695-2690 | 3-4 | 2 | CPxxxxxxxxxxxxxxxxx2 |
| Y2 | 1695-2690 | 5-6 | 3 | CPxxxxxxxxxxxxxxxxx3 |
| Y3 | 1695-2690 | 7-8 | 4 | CPxxxxxxxxxxxxxxxxx4 |
| Y4 | 1695-2690 | 9-10 | 5 | CPxxxxxxxxxxxxxxxxx5 |

Port Configuration

RV4-65D-R5-V2



Electrical Specifications

| | |
|----------------------------|---------------------------------|
| Impedance | 50 ohm |
| Operating Frequency Band | 1695 – 2690 MHz 694 – 960 MHz |
| Polarization | ±45° |
| Total Input Power, maximum | 800 W @ 50 °C |

Electrical Specifications

| Frequency Band, MHz | 694–790 | 790–890 | 890–960 | 1695–1880 | 1920–2200 | 2300–2500 | 2500–2690 |
|-----------------------------------|------------|------------|------------|------------|------------|------------|------------|
| Gain, dBi | 16.7 | 17.2 | 17.4 | 16.8 | 17.4 | 18.1 | 18.1 |
| Beamwidth, Horizontal, degrees | 67 | 65 | 62 | 62 | 63 | 62 | 61 |
| Beamwidth, Vertical, degrees | 8.2 | 7.3 | 6.7 | 7.5 | 6.5 | 5.7 | 5.3 |
| Beam Tilt, degrees | 0–10 | 0–10 | 0–10 | 2–12 | 2–12 | 2–12 | 2–12 |
| USLS (First Lobe), dB | 17 | 21 | 21 | 15 | 16 | 15 | 16 |
| Front-to-Back Ratio at 180°, dB | 31 | 36 | 36 | 31 | 34 | 35 | 34 |
| Isolation, Cross Polarization, dB | 28 | 28 | 28 | 28 | 28 | 28 | 28 |
| Isolation, Inter-band, dB | 30 | 30 | 30 | 30 | 30 | 30 | 30 |
| VSWR Return loss, dB | 1.5 14.0 | 1.5 14.0 | 1.5 14.0 | 1.5 14.0 | 1.5 14.0 | 1.5 14.0 | 1.5 14.0 |
| PIM, 3rd Order, 2 x 20 W, dBc | -150 | -150 | -150 | -150 | -150 | -150 | -150 |

RV4-65D-R5-V2

| | | | | | | | |
|---|-----|-----|-----|-----|-----|-----|-----|
| Input Power per Port at 50°C, maximum, watts | 250 | 250 | 250 | 200 | 200 | 200 | 200 |
|---|-----|-----|-----|-----|-----|-----|-----|

Mechanical Specifications

| | |
|---|---|
| Wind Loading @ Velocity, frontal | 477.0 N @ 150 km/h (107.2 lbf @ 150 km/h) |
| Wind Loading @ Velocity, lateral | 409.0 N @ 150 km/h (91.9 lbf @ 150 km/h) |
| Wind Loading @ Velocity, maximum | 1,010.0 N @ 150 km/h (227.1 lbf @ 150 km/h) |
| Wind Loading @ Velocity, rear | 506.0 N @ 150 km/h (113.8 lbf @ 150 km/h) |
| Wind Speed, maximum | 241 km/h (150 mph) |

Packaging and Weights

| | |
|-----------------------|----------------------|
| Width, packed | 460 mm 18.11 in |
| Depth, packed | 350 mm 13.78 in |
| Length, packed | 2830 mm 111.417 in |
| Weight, gross | 50.5 kg 111.333 lb |

Regulatory Compliance/Certifications

| Agency | Classification |
|---------------|--|
| CHINA-ROHS | Above maximum concentration value |
| ISO 9001:2015 | Designed, manufactured and/or distributed under this quality management system |
| ROHS | Compliant/Exempted |
| UK-ROHS | Compliant/Exempted |



Included Products

| | | |
|----------|---|--|
| BSAMNT-3 | – | Wide Profile Antenna Downtilt Mounting Kit for 2.4 - 4.5 in (60 - 115 mm) OD round members. Kit contains one scissor top bracket set and one bottom bracket set. |
|----------|---|--|

* Footnotes

| | |
|-------------------------|---|
| Performance Note | Severe environmental conditions may degrade optimum performance |
|-------------------------|---|