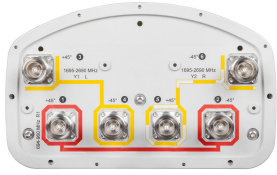


# RVV65A-R3-J



6-port sector antenna, 2x 694–960 and 4x 1695–2690 MHz, 65° HPBW, 3x RET

- Utilizes AccuRET® actuator(s) on the back of the antenna

This product will be discontinued on: March 30, 2024

## General Specifications

<b>Antenna Type</b>	Sector
<b>Band</b>	Multiband
<b>Grounding Type</b>	RF connector inner conductor and body grounded to reflector and mounting bracket
<b>Performance Note</b>	Outdoor usage   Wind loading figures are validated by wind tunnel measurements described in white paper WP-112534-EN
<b>Radome Material</b>	Fiberglass, UV resistant
<b>Radiator Material</b>	Aluminum   Low loss circuit board
<b>Reflector Material</b>	Aluminum
<b>RF Connector Interface</b>	7-16 DIN Female
<b>RF Connector Location</b>	Bottom
<b>RF Connector Quantity, high band</b>	4
<b>RF Connector Quantity, low band</b>	2
<b>RF Connector Quantity, total</b>	6

## Remote Electrical Tilt (RET) Information

<b>RET Interface</b>	8-pin DIN Female   8-pin DIN Male
<b>RET Interface, quantity</b>	3 female   3 male
<b>Input Voltage</b>	10–30 Vdc
<b>Internal RET</b>	High band (2)   Low band (1)
<b>Power Consumption, idle state, maximum</b>	1 W
<b>Power Consumption, normal conditions, maximum</b>	8 W
<b>Protocol</b>	3GPP/AISG 2.0 (Single RET)

# RVV65A-R3-J

## Dimensions

<b>Width</b>	301 mm   11.85 in
<b>Depth</b>	181 mm   7.126 in
<b>Length</b>	1412 mm   55.591 in
<b>Net Weight, without mounting kit</b>	18.6 kg   41.006 lb

## Electrical Specifications

<b>Impedance</b>	50 ohm
<b>Operating Frequency Band</b>	1695 – 2690 MHz   694 – 960 MHz
<b>Polarization</b>	±45°
<b>Total Input Power, maximum</b>	850 W @ 50 °C

## Electrical Specifications

<b>Frequency Band, MHz</b>	<b>694–790</b>	<b>790–890</b>	<b>890–960</b>	<b>1695–1920</b>	<b>1920–2180</b>	<b>2500–2690</b>
<b>Gain, dBi</b>	13.8	14.1	14.5	17.2	17.5	16.7
<b>Beamwidth, Horizontal, degrees</b>	72	70	68	60	63	63
<b>Beamwidth, Vertical, degrees</b>	16.9	15.3	14.2	7.3	6.6	6.4
<b>Beam Tilt, degrees</b>	3–18	3–18	3–18	3–13	3–13	3–13
<b>USLS (First Lobe), dB</b>	16	20	17	18	18	17
<b>Front-to-Back Ratio at 180°, dB</b>	28	33	31	29	32	29
<b>Isolation, Cross Polarization, dB</b>	25	25	25	25	25	25
<b>Isolation, Inter-band, dB</b>	30	30	30	30	30	30
<b>VSWR   Return loss, dB</b>	1.5  14.0	1.5  14.0	1.5  14.0	1.5  14.0	1.5  14.0	1.5  14.0
<b>PIM, 3rd Order, 2 x 20 W, dBc</b>	-150	-150	-150	-150	-150	-150
<b>Input Power per Port at 50°C, maximum, watts</b>	300	300	300	250	250	100

## Electrical Specifications, BASTA

<b>Frequency Band, MHz</b>	<b>694–790</b>	<b>790–890</b>	<b>890–960</b>	<b>1695–1920</b>	<b>1920–2180</b>	<b>2500–2690</b>
<b>Gain by all Beam Tilts, average, dBi</b>	13.5	14	14.2	16.6	17.2	16.3
<b>Gain by all Beam Tilts Tolerance, dB</b>	±0.4	±0.3	±0.5	±0.9	±0.5	±0.7

# RVV65A-R3-J

<b>Gain by Beam Tilt, average, dBi</b>	3°   13.6 10°   13.6 18°   13.4	3°   14.0 10°   14.0 18°   13.8	3°   14.5 10°   14.2 18°   13.7	3°   16.6 8°   16.8 13°   16.4	3°   17.1 8°   17.3 13°   16.8	3°   16.3 8°   16.6 13°   15.6
<b>Beamwidth, Horizontal Tolerance, degrees</b>	±2	±1.5	±2.8	±8	±8.9	±5.4
<b>Beamwidth, Vertical Tolerance, degrees</b>	±1.2	±0.8	±1.1	±0.5	±0.5	±0.4
<b>USLS, beampeak to 20° above beampeak, dB</b>	15	18	17	12	14	10
<b>Front-to-Back Total Power at 180° ± 30°, dB</b>	23	24	21	23	23	23
<b>CPR at Boresight, dB</b>	19	19	18	16	17	21
<b>CPR at Sector, dB</b>	8	9	7	10	11	9

## Mechanical Specifications

<b>Wind Loading @ Velocity, frontal</b>	205.0 N @ 150 km/h (46.1 lbf @ 150 km/h)
<b>Wind Loading @ Velocity, lateral</b>	169.0 N @ 150 km/h (38.0 lbf @ 150 km/h)
<b>Wind Loading @ Velocity, maximum</b>	396.0 N @ 150 km/h (89.0 lbf @ 150 km/h)
<b>Wind Loading @ Velocity, rear</b>	208.0 N @ 150 km/h (46.8 lbf @ 150 km/h)
<b>Wind Speed, maximum</b>	241 km/h (150 mph)

## Packaging and Weights

<b>Width, packed</b>	429 mm   16.89 in
<b>Depth, packed</b>	329 mm   12.953 in
<b>Length, packed</b>	1672 mm   65.827 in
<b>Weight, gross</b>	31.9 kg   70.327 lb

## Regulatory Compliance/Certifications

Agency	Classification
ISO 9001:2015	Designed, manufactured and/or distributed under this quality management system



## Included Products

BSAMNT-OFFSET	– Forward Offset Pipe Mounting Kit for 4.5 in (114.3 mm) OD round members
---------------	---

## \* Footnotes

# RVV65A-R3-J

---

**Performance Note**

Severe environmental conditions may degrade optimum performance

# BSAMNT-OFFSET



Forward Offset Pipe Mounting Kit for 4.5 in (114.3 mm) OD round members

## Product Classification

**Product Type** Pipe mounting kit

## General Specifications

**Application** Outdoor

**Color** Silver

## Dimensions

**Compatible Diameter, maximum** 114.3 mm | 4.5 in

**Compatible Diameter, minimum** 61 mm | 2.402 in

**Weight, net** 3.5 kg | 7.716 lb

## Material Specifications

**Material Type** Galvanized steel

## Packaging and Weights

**Included** Brackets | Hardware

**Packaging quantity** 1

## Regulatory Compliance/Certifications

Agency	Classification
CE	Compliant with the relevant CE product directives
CHINA-ROHS	Below maximum concentration value
ISO 9001:2015	Designed, manufactured and/or distributed under this quality management system
REACH-SVHC	Compliant as per SVHC revision on <a href="http://www.commscope.com/ProductCompliance">www.commscope.com/ProductCompliance</a>
ROHS	Compliant
UK-ROHS	Compliant



# BSAMNT-OFFSET

---