

TBXLHB-6565A-A3M



6-port sector antenna, 2x 824–960 and 4x 1710–2180 MHz, 65° HPBW, 3x RET

- Three DualPol® antennas under one radome
- Interleaved dipole technology providing for attractive, low wind load mechanical package

OBSOLETE

This product was discontinued on: **March 27, 2020**

Replaced By:

RVV-65A-R3

6-port sector antenna, 2x 694–960 and 4x 1695–2690 MHz, 65° HPBW, 3x RET

General Specifications

Antenna Type	Sector
Band	Multiband
Color	Light Gray (RAL 7035)
Grounding Type	RF connector inner conductor and body grounded to reflector and mounting bracket
Performance Note	Outdoor usage
Radome Material	Fiberglass, UV resistant
Radiator Material	Aluminum
RF Connector Interface	7-16 DIN Female
RF Connector Location	Bottom
RF Connector Quantity, high band	4
RF Connector Quantity, low band	2
RF Connector Quantity, total	6

Dimensions

Width	466 mm 18.346 in
Depth	158 mm 6.22 in
Length	1323 mm 52.087 in
Net Weight, without mounting kit	18.6 kg 41.006 lb

Electrical Specifications

TBXLHB-6565A-A3M

Impedance	50 ohm
Operating Frequency Band	1710 – 2180 MHz 824 – 960 MHz
Polarization	±45°

Electrical Specifications

Frequency Band, MHz	824–896	870–960	1710–1880	1850–1990	1920–2180
Gain, dBi	14.6	14.7	16.8	17.1	17.2
Beamwidth, Horizontal, degrees	71.7	68	67.5	65	63
Beamwidth, Vertical, degrees	15.1	14.5	7.4	7	6.6
Beam Tilt, degrees	0–15	0–15	0–8	0–8	0–8
USLS (First Lobe), dB	15	15	15	15	15
Front-to-Back Ratio at 180°, dB	26	26	32	36	36
CPR at Boresight, dB	20	16	12	15	15
CPR at Sector, dB	12	10	7	7	6
Isolation, Cross Polarization, dB	25	30	30	30	30
VSWR Return loss, dB	1.5 14.0	1.5 14.0	1.5 14.0	1.5 14.0	1.5 14.0
PIM, 3rd Order, 2 x 20 W, dBc	-150	-150	-150	-150	-150
Input Power per Port, maximum, watts	350	350	350	350	350

Electrical Specifications, BASTA

Frequency Band, MHz	824–896	870–960	1710–1880	1850–1990	1920–2180
Gain by all Beam Tilts, average, dBi	14.4	14.2	16.7	16.9	17
Gain by all Beam Tilts Tolerance, dB	±0.6	±0.6	±0.8	±0.8	±1
Gain by Beam Tilt, average, dBi	0° 14.7 7° 14.4 15° 13.9	0° 14.6 7° 14.3 15° 13.7	0° 16.7 4° 16.8 8° 16.6	0° 16.9 4° 16.9 8° 16.6	0° 17.1 4° 17.1 8° 16.7
Beamwidth, Horizontal Tolerance, degrees	±5.6	±5.4	±3.3	±3.2	±4.0
Beamwidth, Vertical Tolerance, degrees	±0.8	±0.6	±0.4	±0.3	±0.5
USLS, beampeak to 20° above beampeak, dB	15	16	18	19	16
Front-to-Back Total Power at	22	23	29	30	30

TBXLHB-6565A-A3M

180° ± 30°, dB

CPR at Boresight, dB	21	18	20	19	18
CPR at Sector, dB	12	9	8	7	7

Mechanical Specifications

Wind Loading @ Velocity, frontal	724.0 N @ 150 km/h (162.8 lbf @ 150 km/h)
Wind Loading @ Velocity, lateral	208.0 N @ 150 km/h (46.8 lbf @ 150 km/h)
Wind Loading @ Velocity, rear	751.0 N @ 150 km/h (168.8 lbf @ 150 km/h)
Wind Speed, maximum	241 km/h (150 mph)

Packaging and Weights

Width, packed	572 mm 22.52 in
Depth, packed	264 mm 10.394 in
Length, packed	1612 mm 63.465 in
Weight, gross	30.5 kg 67.241 lb

Regulatory Compliance/Certifications

Agency	Classification
CHINA-ROHS	Below maximum concentration value
ISO 9001:2015	Designed, manufactured and/or distributed under this quality management system
ROHS	Compliant
UK-ROHS	Compliant



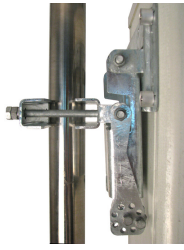
Included Products

BSAMNT-3	-	Wide Profile Antenna Downtilt Mounting Kit for 2.4 - 4.5 in (60 - 115 mm) OD round members. Kit contains one scissor top bracket set and one bottom bracket set.
----------	---	--

* Footnotes

Performance Note	Severe environmental conditions may degrade optimum performance
------------------	---

BSAMNT-3



Wide Profile Antenna Downtilt Mounting Kit for 2.4 - 4.5 in (60 - 115 mm) OD round members. Kit contains one scissor top bracket set and one bottom bracket set.

Product Classification

Product Type Downtilt mounting kit

General Specifications

Application Outdoor

Color Silver

Dimensions

Compatible Diameter, maximum 115 mm | 4.528 in

Compatible Diameter, minimum 60 mm | 2.362 in

Weight, net 6.2 kg | 13.669 lb

Material Specifications

Material Type Galvanized steel

Packaging and Weights

Included Brackets | Hardware

Packaging quantity 1

Weight, gross 6.4 kg | 14.11 lb

Regulatory Compliance/Certifications

Agency	Classification
CE	Compliant with the relevant CE product directives
CHINA-ROHS	Below maximum concentration value
ISO 9001:2015	Designed, manufactured and/or distributed under this quality management system
REACH-SVHC	Compliant as per SVHC revision on www.commscope.com/ProductCompliance
ROHS	Compliant
UK-ROHS	Compliant

BSAMNT-3

