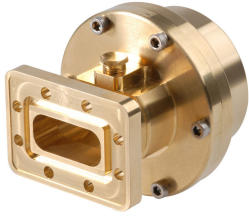


163SEM



Fixed-tuned PDR70 for elliptical waveguide 63

Product Classification

Product Type Elliptical waveguide connector

General Specifications

Attachment Method Tab-flare | Tool-flare
Body Style Straight, fixed-tuned
Inner Contact Plating Unplated
Interface PDR70
Outer Contact Plating Unplated
Pressurizable Yes

Dimensions

Width 85.852 mm | 3.38 in
Length 85.344 mm | 3.36 in
Transition Length 52.832 mm | 2.08 in
Waveguide Size WR137 | WG14 | R70

Electrical Specifications

Insertion Loss, typical 0.01 dB
Operating Frequency Band 5.725 – 7.125 GHz
Peak Power at Frequency, maximum 102.00 kW @ 6.78 GHz

Material Specifications

Material Type Brass

Environmental Specifications

Operating Temperature -55 °C to +85 °C (-67 °F to +185 °F)
Storage Temperature -55 °C to +85 °C (-67 °F to +185 °F)

163SEM

Packaging and Weights

Weight, net 1.7 kg | 3.748 lb

Regulatory Compliance/Certifications

| Agency | Classification |
|---------------|--|
| CHINA-ROHS | Below maximum concentration value |
| ISO 9001:2015 | Designed, manufactured and/or distributed under this quality management system |
| REACH-SVHC | Compliant as per SVHC revision on www.commscope.com/ProductCompliance |
| ROHS | Compliant |
| UK-ROHS | Compliant |



* Footnotes

Insertion Loss, typical 0.05√freq (GHz) (not applicable for elliptical waveguide)