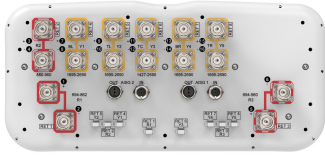


# EGRZV4-65D-R8N43



16-ports sector antenna, 2x 694-862 (R1), 2x 880-960 (R2), 2x 694-960 (R3), 2x 1427-2690 (Y3), 8x 1695-2690 (Y1,Y2,Y4,Y5) MHz ,65° HPBW, 8x RET

- Retractable tilt indicator rods
- 8 Internal RET's provide independent electrical tilt control for each array
- All Internal RET actuators are connected in "Cascaded SRET" configuration
- Supports re-configurable antenna sharing capability enabling control of the internal RET system using up to two separate RET compatible OEM radios
- Antenna shape optimized for wind load reduction

## General Specifications

<b>Antenna Type</b>	Sector with internal RET
<b>Band</b>	Multiband
<b>Color</b>	Light Gray (RAL 7035)
<b>Grounding Type</b>	RF connector inner conductor and body grounded to reflector and mounting bracket
<b>Performance Note</b>	Outdoor usage
<b>Radome Material</b>	Fiberglass, UV resistant
<b>Reflector Material</b>	Aluminum
<b>RF Connector Interface</b>	4.3-10 Female
<b>RF Connector Location</b>	Bottom
<b>RF Connector Quantity, high band</b>	10
<b>RF Connector Quantity, mid band</b>	0
<b>RF Connector Quantity, low band</b>	6
<b>RF Connector Quantity, total</b>	16

## Remote Electrical Tilt (RET) Information

<b>RET Hardware</b>	CommRET v2
<b>RET Interface</b>	8-pin DIN Female   8-pin DIN Male
<b>RET Interface, quantity</b>	2 female   2 male
<b>Input Voltage</b>	10–30 Vdc
<b>Internal RET</b>	High band (5)   Low band (3)
<b>Power Consumption, active state, maximum</b>	8 W

# EGRZV4-65D-R8N43

**Power Consumption, idle state, maximum**

1 W

**Protocol**

3GPP/AISG 2.0 (Single RET)

## Dimensions

**Width**

430 mm | 16.929 in

**Depth**

197 mm | 7.756 in

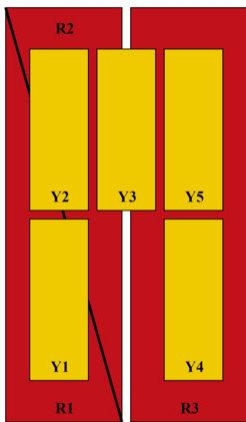
**Length**

2769 mm | 109.016 in

**Net Weight, antenna only**

55.8 kg | 123.018 lb

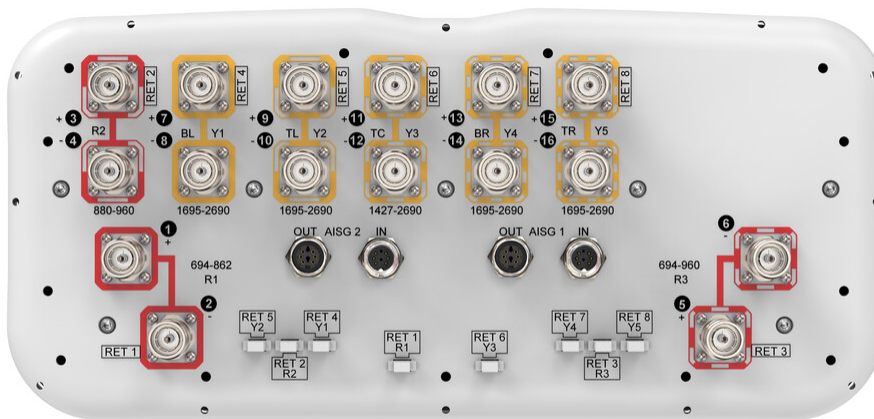
## Array Layout



Array ID	Frequency (MHz)	RF Connector	RET (SRET)	AISG RET UID
R1	694-862	1 - 2	1	CPxxxxxxxxxxxxxxxxR1
R2	880-960	3 - 4	2	CPxxxxxxxxxxxxxxxxR2
R3	694-960	5 - 6	3	CPxxxxxxxxxxxxxxxxR3
Y1	1695-2690	7 - 8	4	CPxxxxxxxxxxxxxxxxY1
Y2	1695-2690	9 - 10	5	CPxxxxxxxxxxxxxxxxY2
Y3	1427-2690	11 - 12	6	CPxxxxxxxxxxxxxxxxY3
Y4	1695-2690	13 - 14	7	CPxxxxxxxxxxxxxxxxY4
Y5	1695-2690	15 - 16	8	CPxxxxxxxxxxxxxxxxY5

(Sizes of colored boxes are not true depictions of array sizes)

## Port Configuration



# EGRZV4-65D-R8N43

## Electrical Specifications

<b>Impedance</b>	50 ohm
<b>Operating Frequency Band</b>	1427 – 2690 MHz   1695 – 2690 MHz   694 – 862 MHz   694 – 960 MHz   880 – 960 MHz
<b>Polarization</b>	±45°
<b>Total Input Power, maximum</b>	900 W @ 50 °C

## Electrical Specifications

	<b>R1</b>	<b>R2</b>	<b>R3</b>	<b>Y3</b>	<b>Y3</b>	<b>Y3</b>	<b>Y1,Y2,Y4,Y5</b>	<b>Y1,Y2,Y4,Y5</b>
<b>Frequency Band, MHz</b>	<b>694–862</b>	<b>880–960</b>	<b>694–960</b>	<b>1427–1518</b>	<b>1695–2180</b>	<b>2300–2690</b>	<b>1695–2200</b>	<b>2300–2690</b>
<b>RF Port</b>	1,2	3,4	5,6	11,12	11,12	11,12	7-10,13-16	7-10,13-16
<b>Gain, dBi</b>	15.5	16.1	16.4	16.3	17.6	18.1	17.4	18.1
<b>Beamwidth, Horizontal, degrees</b>	59	54	58	58	56	62	59	58
<b>Beamwidth, Vertical, degrees</b>	7.3	6.3	6.9	7.2	5.6	4.4	6.2	5
<b>Beam Tilt, degrees</b>	2–12	2–12	2–12	2–12	2–12	2–12	2–12	2–12
<b>USLS (First Lobe), dB</b>	17	18	15	20	20	20	15	16
<b>Front-to-Back Ratio at 180°, dB</b>	34	31	31	35	31	32	32	32
<b>Isolation, Cross Polarization, dB</b>	27	27	27	26	26	26	27	27
<b>Isolation, Inter-band, dB</b>	27	27	27	27	27	27	27	27
<b>VSWR   Return loss, dB</b>	1.5 14.0	1.5 14.0	1.5 14.0	1.5 14.0	1.5 14.0	1.5 14.0	1.5 14.0	1.5 14.0
<b>PIM, 3rd Order, 2 x 20 W, dBc</b>	-153	-153	-153	-153	-153	-153	-153	-153
<b>Input Power per Port at 50°C, maximum, watts</b>	300	300	300	250	250	200	250	200

## Mechanical Specifications

<b>Wind Loading @ Velocity, frontal</b>	680.0 N @ 150 km/h (152.9 lbf @ 150 km/h)
<b>Wind Loading @ Velocity, lateral</b>	347.0 N @ 150 km/h (78.0 lbf @ 150 km/h)
<b>Wind Loading @ Velocity, maximum</b>	1,020.0 N @ 150 km/h (229.3 lbf @ 150 km/h)
<b>Wind Loading @ Velocity, rear</b>	434.0 N @ 150 km/h (97.6 lbf @ 150 km/h)
<b>Wind Speed, maximum</b>	241 km/h (150 mph)

## Packaging and Weights

<b>Width, packed</b>	530 mm   20.866 in
----------------------	--------------------

# EGRZV4-65D-R8N43

---

<b>Depth, packed</b>	356 mm   14.016 in
<b>Length, packed</b>	2897 mm   114.055 in
<b>Weight, gross</b>	76.8 kg   169.315 lb

## Regulatory Compliance/Certifications

<b>Agency</b>	<b>Classification</b>
CHINA-ROHS	Below maximum concentration value
ISO 9001:2015	Designed, manufactured and/or distributed under this quality management system
ROHS	Compliant
UK-ROHS	Compliant



## Included Products

- |           |   |  |
|-----------|---|--|
| BSAMNT-4  | - | Wide Profile Antenna Downtilt Mounting Kit for 2.4 - 4.5 in (60 - 115 mm) OD round members. Kit contains one scissor top bracket set and one bottom bracket set. |
| BSAMNT-M4 | - | Middle Downtilt Mounting Kit for Long Antennas for 2.4 - 4.5 in (60 - 115 mm) OD round members. Kit contains one scissor bracket set.                            |

## \* Footnotes

**Performance Note** Severe environmental conditions may degrade optimum performance