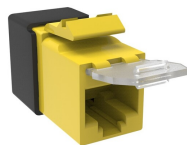


760241202 | SL10G-DC-YL



SL-Series Modular Jack, RJ45, Cat6A Unshielded, with Dust Cover, Yellow

- Color is more prominently visible across the body of the jack
- Allows for all jack variants to be terminated with the SL termination tool
- Lacing fixture of the SL termination tool is used to establish the cable termination

OBSOLETE

Replaced By:

760257221
SL10G-DC-YL

SL-Series Modular Jack, RJ45, Cat6A Unshielded, with Dust Cover, Yellow

Product Classification

| | |
|-----------------------|---|
| Regional Availability | Asia Australia/New Zealand EMEA Latin America |
| Portfolio | NETCONNECT® |
| Product Type | Modular jack |
| Product Series | SL Series |

General Specifications

| | |
|---------------------------------|---|
| ANSI/TIA Category | 6A |
| Cable Type | Unshielded |
| Color | Yellow |
| Conductor Type | Solid Stranded |
| Integrated Dust Cover Type | Hinged |
| Mounting | SL Series faceplates and panels |
| Outlet Type | Standard |
| Termination Punchdowns, minimum | 5 times |
| Termination Tool | SL Termination tool |
| Termination Type | IDC |
| Transmission Standards | ANSI/TIA-568.2-D ISO/IEC 11801 Class EA |
| Wiring | T568A T568B |

Dimensions

| | |
|---------------------------|-----------------------------------|
| Panel Cutout, recommended | 14.78 x 20.07 mm (0.58 x 0.79 in) |
|---------------------------|-----------------------------------|

760241202 | SL10G-DC-YL

| | |
|--|---------------------|
| Panel Thickness, recommended | 1.6 mm 0.063 in |
| Height | 16.13 mm 0.635 in |
| Width | 14.48 mm 0.57 in |
| Depth | 30.48 mm 1.2 in |
| Compatible Cable Diameter, maximum | 7.24 mm 0.285 in |
| Compatible Insulated Conductor Diameter, maximum | 1.45 mm 0.057 in |
| Contact Plating Thickness | 1.27 µm |
| Compatible Conductor Gauge, solid | 22 AWG 24 AWG |
| Compatible Conductor Gauge, stranded | 24 AWG 26 AWG |

Electrical Specifications

| | |
|-----------------|--|
| Remote Powering | Fully supports the safe delivery of power over LAN cabling described by IEEE 802.3bt (Type 4) and complies with the unmating under electrical load requirements prescribed by IEC 60512-99-002 |
| PoE Durability | Supports IEEE 802.3bt Type 4 (90 W) applications greater than 3000 plug to jack mating cycles |

Material Specifications

| | |
|--------------------------|--|
| Contact Base Material | Beryllium copper |
| Contact Plating Material | Gold |
| IDC Termination Material | Phosphor Bronze |
| Material Type | Copper alloy High-impact, flame retardant, thermoplastic Polycarbonate |

Mechanical Specifications

| | |
|----------------------------|--------------------------------|
| Plug to Jack Mating Cycles | Complies to IEC 60603-7 series |
|----------------------------|--------------------------------|

Environmental Specifications

| | |
|-----------------------|--------------------------------------|
| Operating Temperature | -10 °C to +60 °C (+14 °F to +140 °F) |
| Storage Temperature | -40 °C to +70 °C (-40 °F to +158 °F) |
| Flammability Rating | UL 94 V-0 |

Packaging and Weights

| | |
|--------------------|-----|
| Packaging quantity | 1 |
| Packaging Type | Bag |

Regulatory Compliance/Certifications

| Agency | Classification |
|---------------|--|
| CHINA-ROHS | Below maximum concentration value |
| ISO 9001:2015 | Designed, manufactured and/or distributed under this quality management system |
| REACH-SVHC | Compliant as per SVHC revision on www.commscope.com/ProductCompliance |
| ROHS | Compliant |
| UK-ROHS | Compliant |

