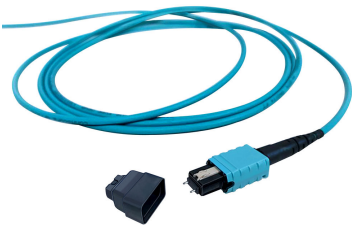


# UQXMFMFGD

Base Product



Ultra Low Loss (ULL) OM4 MPO12 (Unpinned) Polarity and Gender Changeable, Fiber Extension Cable Assembly, 12-Fiber, Plenum

## Product Classification

Regional Availability	Asia   Australia/New Zealand   Europe   Latin America   Middle East /Africa   North America
Portfolio	CommScope®
Product Type	Fiber array cable assembly
Product Brand	SYSTIMAX ULL
Ordering Note	For additional jacket colors, please contact a CommScope Sales Representative   For lengths greater than 999 ft (304 m), orders must be in meters   Minimum length may vary based on cable configuration

## General Specifications

Connector A, quantity	1
Color, boot A	Black
Color, connector A	Aqua
Connector B, quantity	1
Color, boot B	Black
Color, connector B	Aqua
Construction Type	Stranded
Furcation Color	Aqua
Interface, Connector A	MPO-12/UPC Female
Interface Feature, connector A	Gender changeable
Interface, Connector B	MPO-12/UPC Female
Interface Feature, connector B	Gender changeable
Jacket Color	Aqua
Polarity	Method B Enhanced (ULL)

# UQXMFMFGD

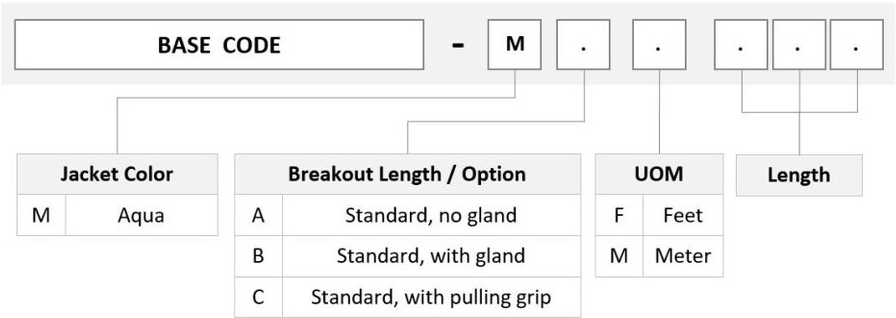
Total Fibers, quantity12

## Dimensions

Cable Assembly Length Range (m)1 – 305

Cable Assembly Length Range (ft)1 – 999

## Ordering Tree



## Optical Specifications

Fiber ModeMultimode

Fiber TypeOM4, LazrSPEED®

## Environmental Specifications

Operating Temperature-10 °C to +60 °C (+14 °F to +140 °F)

Environmental SpaceIndoor | Plenum

## Regulatory Compliance/Certifications

Agency	Classification
ANATEL	Compliant
CHINA-ROHS	Above maximum concentration value
ISO 9001:2015	Designed, manufactured and/or distributed under this quality management system
ROHS	Compliant/Exempted
UK-ROHS	Compliant/Exempted

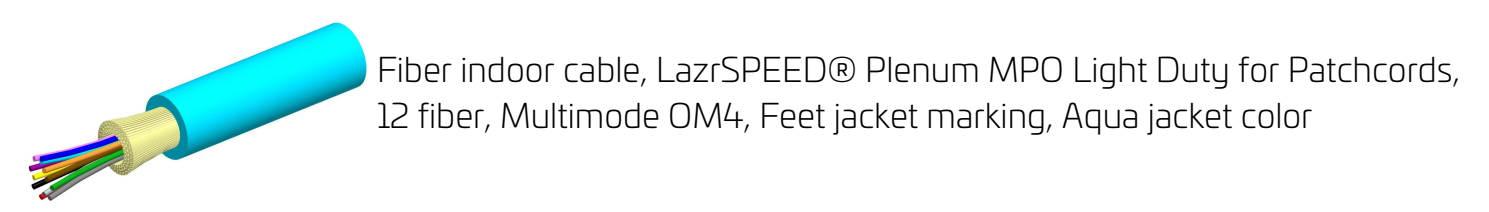


# UQXMFMFGD

---

## Included Products

- |                   |   |  |
|-------------------|---|--|
| 760074997         | – | Fiber indoor cable, LazrSPEED® Plenum MPO Light Duty for Patchcords, 12 fiber, Multimode |
| P-012-MP-5K-F30AQ |   | OM4, Feet jacket marking, Aqua jacket color  |
| 860642487         | – | LazrSPEED® Elite MTP Pro Female 12 Fiber Connector, aqua                                 |



Fiber indoor cable, LazrSPEED® Plenum MPO Light Duty for Patchcords, 12 fiber, Multimode OM4, Feet jacket marking, Aqua jacket color

Product Classification

Regional Availability	Asia   Australia/New Zealand   Latin America   Middle East/Africa   North America
Portfolio	CommScope®
Product Type	Fiber indoor cable
Product Series	P-MP

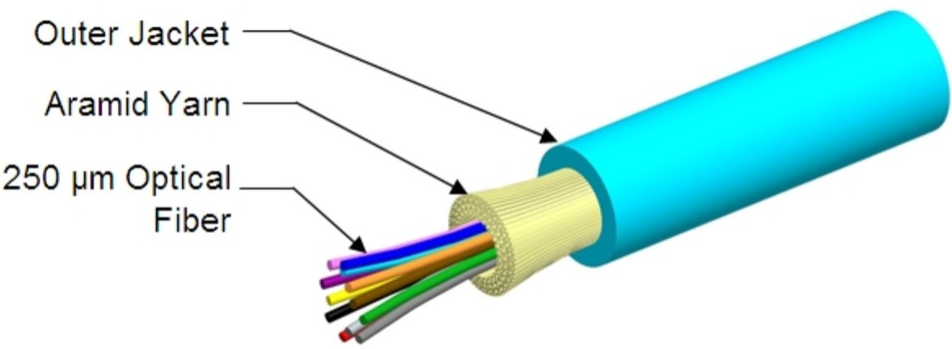
General Specifications

Cable Type	MPO trunk cable
Construction Type	Non-armored
Subunit Type	Gel-free
Jacket Color	Aqua
Jacket Marking	Feet
Total Fiber Count	12

Dimensions

Diameter Over Jacket	3 mm   0.118 in
----------------------	-----------------

Representative Image



### Mechanical Specifications

Minimum Bend Radius, loaded	45 mm   1.772 in
Minimum Bend Radius, unloaded	24 mm   0.945 in
Tensile Load, long term, maximum	100 N   22.481 lbf
Tensile Load, short term, maximum	334 N   75.086 lbf
Compression	4 N/mm   22.841 lb/in
Compression Test Method	FOTP-41   IEC 60794-1 E3
Flex	300 cycles
Flex Test Method	FOTP-104   IEC 60794-1 E6
Impact	0.74 N-m   6.55 in lb
Impact Test Method	FOTP-25   IEC 60794-1 E4
Strain	See long and short term tensile loads
Strain Test Method	FOTP-33   IEC 60794-1 E1
Twist	10 cycles
Twist Test Method	FOTP-85   IEC 60794-1 E7
Vertical Rise, maximum	500 m   1,640.42 ft

### Optical Specifications

Fiber Type	OM4, LazrSPEED® 550   OM4, LazrSPEED® 550
------------	---

### Environmental Specifications

Installation temperature	0 °C to +70 °C (+32 °F to +158 °F)
Operating Temperature	0 °C to +70 °C (+32 °F to +158 °F)
Storage Temperature	-40 °C to +70 °C (-40 °F to +158 °F)
Cable Qualification Standards	ANSI/ICEA S-83-596   Telcordia GR-409
Environmental Space	Plenum
Flame Test Listing	NEC OFNP (ETL) and c(ETL)
Flame Test Method	NFPA 130   NFPA 262

### Environmental Test Specifications

Heat Age	0 °C to +85 °C (+32 °F to +185 °F)
Heat Age Test Method	IEC 60794-1 F9
Low High Bend	0 °C to +70 °C (+32 °F to +158 °F)

Low High Bend Test Method	FOTP-37   IEC 60794-1 E11
Temperature Cycle	0 °C to +70 °C (+32 °F to +158 °F)
Temperature Cycle Test Method	FOTP-3   IEC 60794-1 F1

Packaging and Weights

Cable weight	9 kg/km   6.048 lb/kft
--------------	------------------------

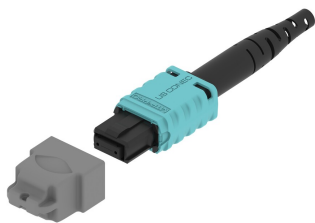
Regulatory Compliance/Certifications

Agency	Classification
CHINA-ROHS	Below maximum concentration value
ISO 9001:2015	Designed, manufactured and/or distributed under this quality management system
REACH-SVHC	Compliant as per SVHC revision on <a href="http://www.commscope.com/ProductCompliance">www.commscope.com/ProductCompliance</a>
ROHS	Compliant
UK-ROHS	Compliant



\* Footnotes

**Operating Temperature** Specification applicable to non-terminated bulk fiber cable



LazrSPEED® Elite MTP Pro Female 12 Fiber Connector, aqua

Product Classification

Regional Availability	Asia   Australia/New Zealand   EMEA   Latin America   North America
Portfolio	CommScope®
Product Type	Fiber connector
Product Brand	LazrSPEED®

General Specifications

Color	Aqua
Color, boot	Black
Ferrule Geometry	Flat
Interface	MPO/UPC Female
Interface Feature	Gender Change   Unpinned
Total Fiber Count	12

Dimensions

Length	62.3 mm   2.453 in
Compatible Cable Diameter	3 mm   0.118 in

Material Specifications

Ferrule Material	Polymer
------------------	---------

Mechanical Specifications

Cable Retention Strength, maximum	11.24 lb @ 0 °
-----------------------------------	----------------

Optical Specifications

Fiber Mode	Multimode
Fiber Type	OM3, LazrSPEED® 300   OM4, LazrSPEED® 550
Insertion Loss Change, mating	0.3 dB
Optical Components Standard	ANSI/TIA-568-C.3

Insertion Loss Change, temperature	0.3 dB
Insertion Loss, maximum	0.27 dB
Insertion Loss, ULL, maximum	0.2 dB
Return Loss, minimum	27 dB

Packaging and Weights

Packaging quantity	1
--------------------	---

Regulatory Compliance/Certifications

Agency	Classification
CHINA-ROHS	Below maximum concentration value
ISO 9001:2015	Designed, manufactured and/or distributed under this quality management system
REACH-SVHC	Compliant as per SVHC revision on <a href="http://www.commscope.com/ProductCompliance">www.commscope.com/ProductCompliance</a>
ROHS	Compliant
UK-ROHS	Compliant



\* Footnotes

Insertion Loss Change, mating	TIA-568: Maximum insertion loss change after 500 matings
Insertion Loss Change, temperature	Maximum insertion loss change from -10 °C to +60 °C (+14 °F to +140 °F)