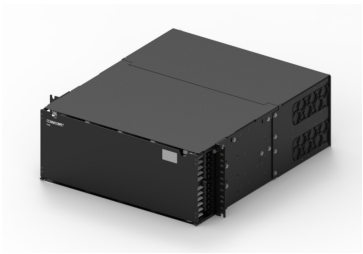


CHD-4U



SYSTIMAX® CHD 4U sliding tray fiber panel, accepts (48) CHD ULL modules, splice cassettes or MPO panels, providing up to 288 duplex LC ports or up to 288 MPO ports, black, High Speed Migration

This product will be discontinued on: December 31, 2025

Replaced By:

760252004
PPL-4U Propel 4RU sliding tray fiber panel, accepts Propel ULL modules or adapter packs, providing up to 288 duplex LC ports, 288 MPO ports or 576 SN ports (1152f)

Product Classification

Regional Availability	Asia Australia/New Zealand EMEA Latin America North America
Portfolio	CommScope®
Product Type	Fiber patch panel
Product Series	CHD

General Specifications

Application	Accepts 48 CHD Universal Modules, or CHD MPO/LC adapter packs
Color	Black
Interface, front	Unloaded
Rack Units	4
Shelf Movement	Sliding
Total Ports, quantity	0

Dimensions

Height	177.8 mm 7 in
Width	482.6 mm 19 in
Depth	538.48 mm 21.2 in

Packaging and Weights

Weight, net	15.604 kg 34.4 lb
-------------	---------------------

CHD-4U

Regulatory Compliance/Certifications

Agency	Classification
CHINA-ROHS	Below maximum concentration value
REACH-SVHC	Compliant as per SVHC revision on www.commscope.com/ProductCompliance
ROHS	Compliant
UK-ROHS	Compliant

