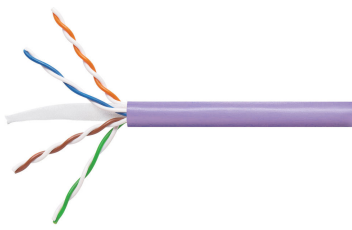


884016114/10 | CS34Z3 LIL C6 4/24 U/UTP CPK 305M



CS34Z3 Category 6 U/UTP Cable, low smoke zero halogen, lilac jacket, 4 pair count, 1000 ft (305 m) length CommPak

Product Classification

Regional Availability	EMEA
Portfolio	NETCONNECT®
Product Type	Twisted pair cable
Ordering Note	Available in Europe, Middle East, and Africa

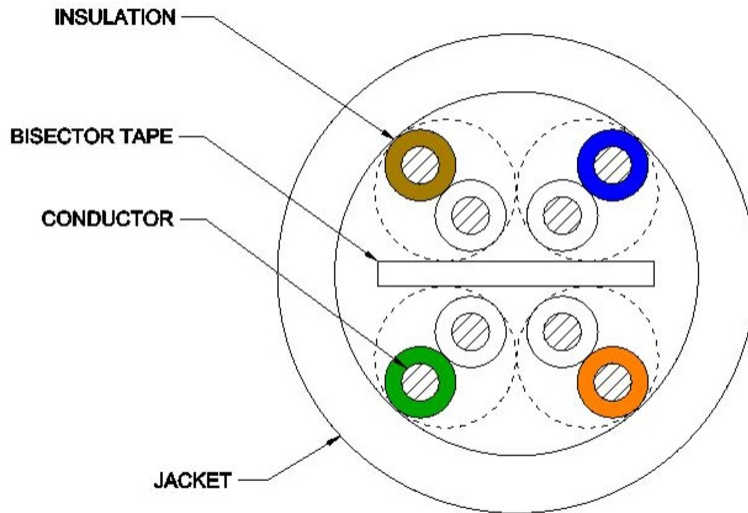
General Specifications

Product Number	CS34Z3
ANSI/TIA Category	6
Cable Component Type	Horizontal
Cable Type	U/UTP (unshielded)
Conductor Type, singles	Solid
Conductors, quantity	8
Jacket Color	Lilac
Note	All electrical transmission tests include swept frequency measurements
Pairs, quantity	4
Separator Type	Tape separator
Transmission Standards	ANSI/TIA-568.2-D CENELEC EN 50288-6-1 ISO/IEC 11801 Class E

Dimensions

Cable Length	304.8 m 1000 ft
Diameter Over Insulated Conductor	1.041 mm 0.041 in
Diameter Over Jacket, nominal	5.715 mm 0.225 in
Jacket Thickness	0.559 mm 0.022 in
Conductor Gauge, singles	24 AWG

Cross Section Drawing



Electrical Specifications

Characteristic Impedance	100 ohm
dc Resistance Unbalance, maximum	5 %
dc Resistance, maximum	9.38 ohms/100 m 2.859 ohms/100 ft
Delay Skew, maximum	24 ns
Dielectric Strength, minimum	1500 Vac 2500 Vdc
Mutual Capacitance at Frequency	5.6 nF/100 m @ 1 kHz
Nominal Velocity of Propagation (NVP)	71 %
Operating Frequency, maximum	250 MHz
Operating Voltage, maximum	80 V
Remote Powering	Fully complies with the recommendations set forth by IEEE 802.3bt (Type 4) for the safe delivery of power over LAN cable when installed according to ISO/IEC 14763-2, CENELEC EN 50174-1, CENELEC EN 50174-2 or TIA TSB-184-A
Safety Voltage Rating	300 V
Segregation Class	b

Electrical Cable Performance

CS	CommScope	NEXT	Near End Crosstalk (dB/100m)
STD	Refers to the standard value listed under Transmission Standards in the Electrical Specifications above	PSNEXT	Power Sum Near End Crosstalk (db/100m)
TYP	Typical Electrical Performance	ACRF	Attenuation to Crosstalk Ratio - Far End (dB/100m)
IL	Insertion Loss (dB/100m)	RL	Return Loss (dB)
ACR	Attenuation to Crosstalk Ratio (dB/100m)	ELTCTL	Equal Level Transverse Conversion Transfer Loss (dB/100m)
PSACR	Power Sum Attenuation to Crosstalk Ratio (dB/100m)		
PSACRF	Power Sum Attenuation to Crosstalk Ratio - Far End (dB/100m)		
TCL	Transverse Conversion Loss (dB/100m)		

Freq. MHz	IL		NEXT		ACR		PSNEXT		PSACR		ACRF		PSACRF		RL		TCL		ELTCTL	
	CS	STD	CS	STD	CS	STD	CS	STD	CS	STD	CS	STD	CS	STD	CS	STD	CS	STD	CS	STD
1	2	2	75.3	74.3	73.3	72.3	72.3	72.3	70.3	70.3	68	67.8	65	64.8	20	20	40	40	35	35
4	3.8	3.8	66.3	65.3	62.5	61.5	63.3	63.3	59.5	59.5	56	55.8	53	52.8	23	23	40	40	23	23
8	5.3	5.3	61.8	60.8	56.4	55.4	58.8	58.8	53.4	53.4	49.9	49.7	46.9	46.7	24.5	24.5	40	40	16.9	16.9
10	6	6	60.3	59.3	54.3	53.3	57.3	57.3	51.3	51.3	48	47.8	45	44.8	25	25	40	40	15	15
16	7.6	7.6	57.2	56.2	49.7	48.7	54.2	54.2	46.7	46.7	43.9	43.7	40.9	40.7	25	25	38	38	10.9	
20	8.5	8.5	55.8	54.8	47.3	46.3	52.8	52.8	44.3	44.3	42	41.8	39	38.8	25	25	37	37	9	9
25	9.5	9.5	54.3	53.3	44.8	43.8	51.3	51.3	41.8	41.8	40	39.8	37	36.8	24.3	24.3	36	36	7	7
31.25	10.7	10.7	52.9	51.9	41.2	41.2	49.9	49.9	39.2	39.2	38.1	37.9	35.1	34.9	23.6	23.6	35.1	35.1		
62.5	15.4	15.4	48.4	47.4	33	32	45.4	45.4	30	30	32.1	31.9	29.1	28.9	21.5	21.5	32	32		
100	19.8	19.8	45.3	44.3	25.5	24.5	42.3	42.3	22.5	22.5	28	27.8	25	24.8	20.1	20.1	30	30		
155	25.2	25.2	42.4	41.4	17.3	16.3	39.4	39.4	14.3	14.3	24.2	24	21.2	21	18.8	18.8	28.1	28.1		
200	29	29	40.8	39.8	11.8	10.8	37.8	37.8	8.8	8.8	22	21.8	19	18.8	18	18	27	27		
250	32.8	32.8	39.3	38.3	6.5	5.5	36.3	36.3	3.5	3.5	20	19.8	17	16.8	17.3	17.3	26	26		

Material Specifications

Conductor Material	Bare copper
Insulation Material	Polyolefin
Jacket Material	Low Smoke Zero Halogen (LSZH)
Separator Material	Polyolefin

Mechanical Specifications

Pulling Tension, maximum	11.34 kg 25 lb
---------------------------------	------------------

Environmental Specifications

Installation temperature	0 °C to +60 °C (+32 °F to +140 °F)
Operating Temperature	-20 °C to +60 °C (-4 °F to +140 °F)
Acid Gas Test Method	IEC 60754-2
EN50575 CPR Cable EuroClass Fire Performance	Dca

884016114/10 | CS34Z3 LIL C6 4/24 U/UTP CPK 305M

EN50575 CPR Cable EuroClass Smoke Rating	s2
EN50575 CPR Cable EuroClass Droplets Rating	d2
EN50575 CPR Cable EuroClass Acidity Rating	a1
Environmental Space	Low Smoke Zero Halogen (LSZH)
Flame Test Method	IEC 60332-3-22
Smoke Test Method	IEC 61034-2

Packaging and Weights

Cable weight	28.424 kg/km 19.1 lb/kft
Packaging Type	CommPak® box

Regulatory Compliance/Certifications

Agency	Classification
CENELEC	EN 50575 compliant, Declaration of Performance (DoP) available
CHINA-ROHS	Below maximum concentration value
ISO 9001:2015	Designed, manufactured and/or distributed under this quality management system
REACH-SVHC	Compliant as per SVHC revision on www.commscope.com/ProductCompliance
ROHS	Compliant
UK-ROHS	Compliant

