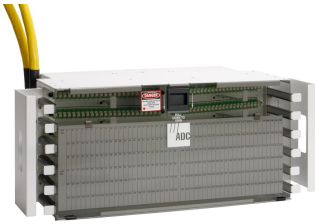


FCM-TK/KZD061



FDF Fiber Termination Panel, 144 LC/UPC, singlemode, 8 in x 23 in, putty white, pre-terminated with IFC cable, 61 meters, LC/UPC at far end

Product Classification

Regional Availability	Latin America North America
Portfolio	CommScope®
Product Type	Fiber patch panel, with IFC cable
Product Series	FDF

General Specifications

Functionality	Patching
Application	Used in rear-load FDF-style frames only
Body Style	Symmetrical
Cable Exit Location	Upward
Cable Stub Type	IFC, stranded
Color	Putty white
Color, front	Putty white
Growth Configuration	Fully loaded
Interface, front	LC/UPC
Interface, rear	LC/UPC
Patch Cord Entry Location	Front, left side Front, right side
Rack Type	EIA 23 in
Rack Units	4.57
Shelf Movement	Fixed
Total Ports, quantity	144

Dimensions

Height	203.2 mm 8 in
Width	584.2 mm 23 in
Depth	304.8 mm 12 in

FCM-TK/KZD061

Cable Length 61 m | 200.131 ft

Material Specifications

Finish Powder coated

Material Type Steel

Optical Specifications

Fiber Mode Singlemode

Environmental Specifications

Operating Temperature -40 °C to +70 °C (-40 °F to +158 °F)

Packaging and Weights

Packaging quantity 1

Regulatory Compliance/Certifications

Agency	Classification
CHINA-ROHS	Above maximum concentration value
REACH-SVHC	Compliant as per SVHC revision on www.commscope.com/ProductCompliance
ROHS	Compliant/Exempted
UK-ROHS	Compliant

