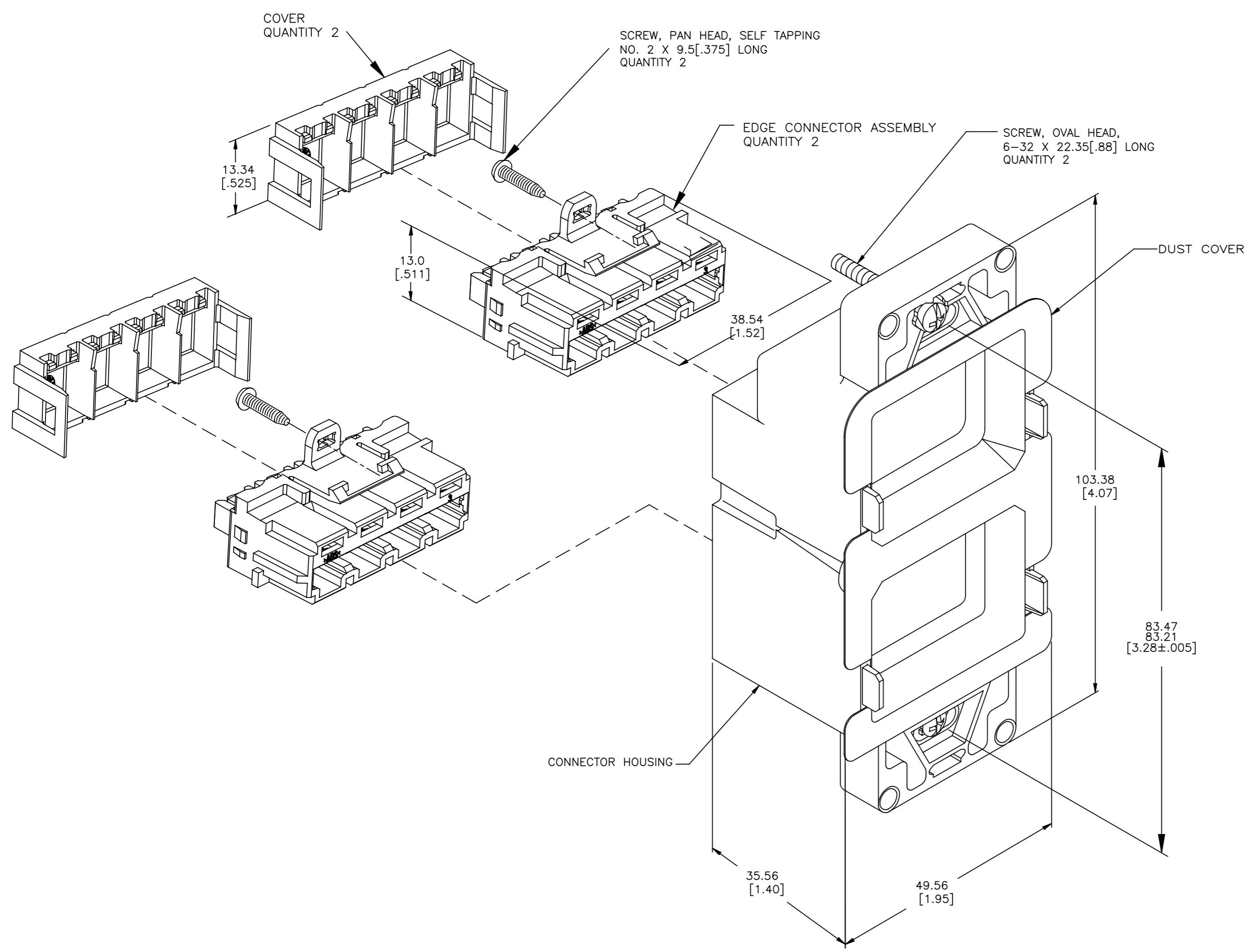


REVISIONS					
P	LTR	DESCRIPTION	DATE	OWN	APVD
C		REV; MCO-40026426MCO	10DEC2015	HG	RA
D		REV PER BNS_CD_BRAND	10MAR2017	GG	DC



EXPLODED VIEW

1. DIMENSIONS ARE MAXIMUM UNLESS OTHERWISE SPECIFIED.
2. MATERIAL: CONNECTOR HOUSING - ABS MOLDING COMPOUND, NATURAL.
 EDGE CONNECTOR HOUSING - POLYESTER MOLDING COMPOUND, BLACK.
 EDGE CONNECTOR TERMINALS - COPPER SILICON TIN CHROME ALLOY WITH 1.02µm [.000040] MINIMUM GOLD PLATE OVER 1.27µm [.000050] MINIMUM NICKEL PLATE IN CONTACT AREA, GOLD FLASH OVER REST OF TERMINAL.
 SCREWS - ZINC PLATED CARBON STEEL.
 DUST COVER - 0.25 [.010] THICK CLEAR PVC.
3. EDGE CONNECTOR AND COVERS SHIPPED NOT ASSEMBLED.
4. STEEL CITY 4" SQUARE DEVICE COVER FOR TWO DEVICES - CATALOG SERIES 52-C (OR AMP APPROVED EQUIVALENT) IS RECOMMENDED FOR PROPER INSTALLATION WHEN DOUBLE GANG APPLICATION IS REQUIRED.

406352-1
 PART NUMBER

THIS DRAWING IS A CONTROLLED DOCUMENT.		DWI DL DRUMMOND 05 DEC 98		COMMSCOPE, INC.	
		CHK DL DRUMMOND 12 FEB 97			
DIMENSIONS:		TOLERANCES UNLESS OTHERWISE SPECIFIED:		NAME	
mm [INCHES]		APVD A. DUNN 12 FEB 97		WALLBOX KIT, DUAL, UNSHIELDED, AMP COMMUNICATIONS OUTLET	
0 PLC ± .1		1 ± .1		PRODUCT SPEC	
1 PLC ± .1		2 ± .1		108-1206	
2 PLC ± .1		3 ± .1		APPLICATION SPEC	
3 PLC ± .1		4 ± .1		SIZE	
4 PLC ± .1		ANGLES ± .1		CAGE CODE	
FINISH		MATERIAL		DRAWING NO	
2		2		A1	
		WEIGHT		C=406352	
		CUSTOMER DRAWING		RESTRICTED TO	
				SCALE 2:1 SHEET 1 OF 1 REV D	