

639577 Revision D, May 2016

Updating Firmware Of CommScope Devices Using The ATC300-1000/2000 Control System



Pre-Upgrade Notes

- **CommScope strongly recommends that each component be tested before installation on the tower.**
- CommScope recommends that you register online to receive notifications for updates made to the software. It is also recommended that the CommScope web site be checked every 30 days for updated software/documentation.
- ATC300-1000/2000 firmware version 2.16 or later provides the user with an improved method for updating CommScope device firmware. The **Device Statistics Screen** (Figure 1) displays the device firmware status in the **Update Req'd** field shown in one of three states:
 A **dashed line** is a device that is not supported by this upgrade method.
Unknown indicates that the firmware for that device has not been installed on the controller.
Yes or **No** means that a device does or does not require upgrading from the controller.
- Please contact the CommScope Customer Support Center (see cover page) for any questions.

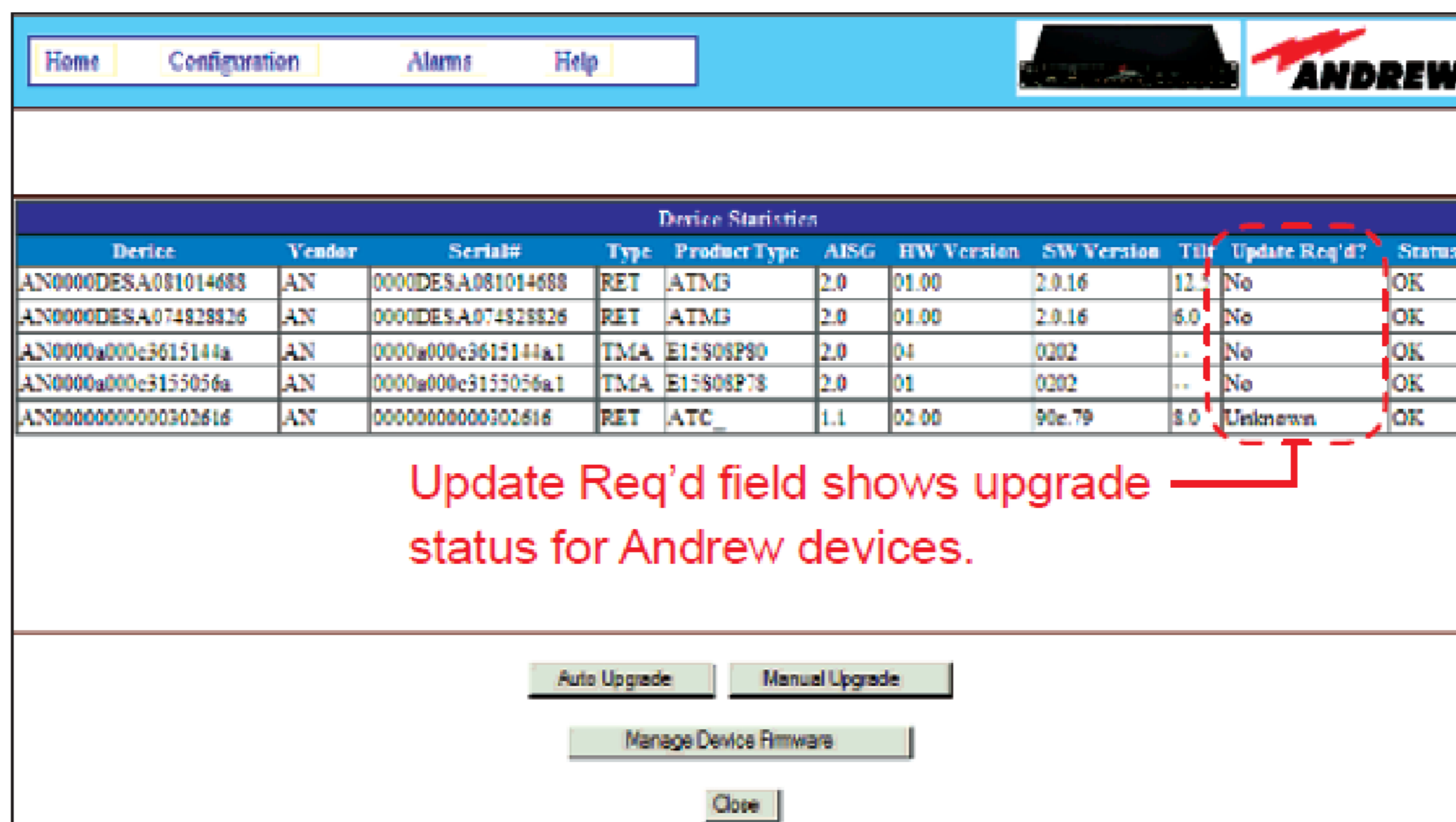


Figure 1. ATC300-1000/2000 Controller **Device Statistics** Screen.

Notices and Precautions

WARRANTY NOTICE

Proper installation procedures must be followed when installing and operating RET equipment. Failure to assure installations are done properly by trained installation personnel and to follow procedures discussed in this bulletin may cause warranty for such products to be void.

CommScope requires pretesting actuators on the ground prior to installation using the CommScope portable controller and the latest version of the controller software (available online at www.commscope.com/Resources/Software). This will verify proper actuator functionality and also ensure that the latest available actuator firmware release is installed on the actuator. Failure to conduct pre-test and pre-installation procedures defined by CommScope will void warranty.

SAFETY NOTICE

The installation, maintenance, or removal of an antenna requires qualified, experienced personnel. CommScope installation instructions are written for such installation personnel. Antenna systems should be inspected once a year by qualified personnel to verify proper installation, maintenance, and condition of equipment. CommScope disclaims any liability or responsibility for the results of improper or unsafe installation practices.

It is recommended that transmit power be turned off when the field installation is performed. Follow all applicable safety precautions as shown on this page.



Do not install near power lines. Power lines, telephone lines, and guy wires look the same. Assume any wire or line can electrocute you.



Do not install on a wet or windy day or when lightning or thunder is in the area. Do not use metal ladder.



Wear shoes with rubber soles and heels. Wear protective clothing including a long-sleeved shirt and rubber gloves.

1.0 Scan For Devices

1. To scan for AISG antenna line devices, click on the **Find Devices** button (Figure 2).



Figure 2. ATC300-1000/2000 Controller **Home** Screen.

2. Click on the **Start Scan** button.

The **Device Search Progress** (Figure 3) window shows when the device search locates each device connected to the RET system.

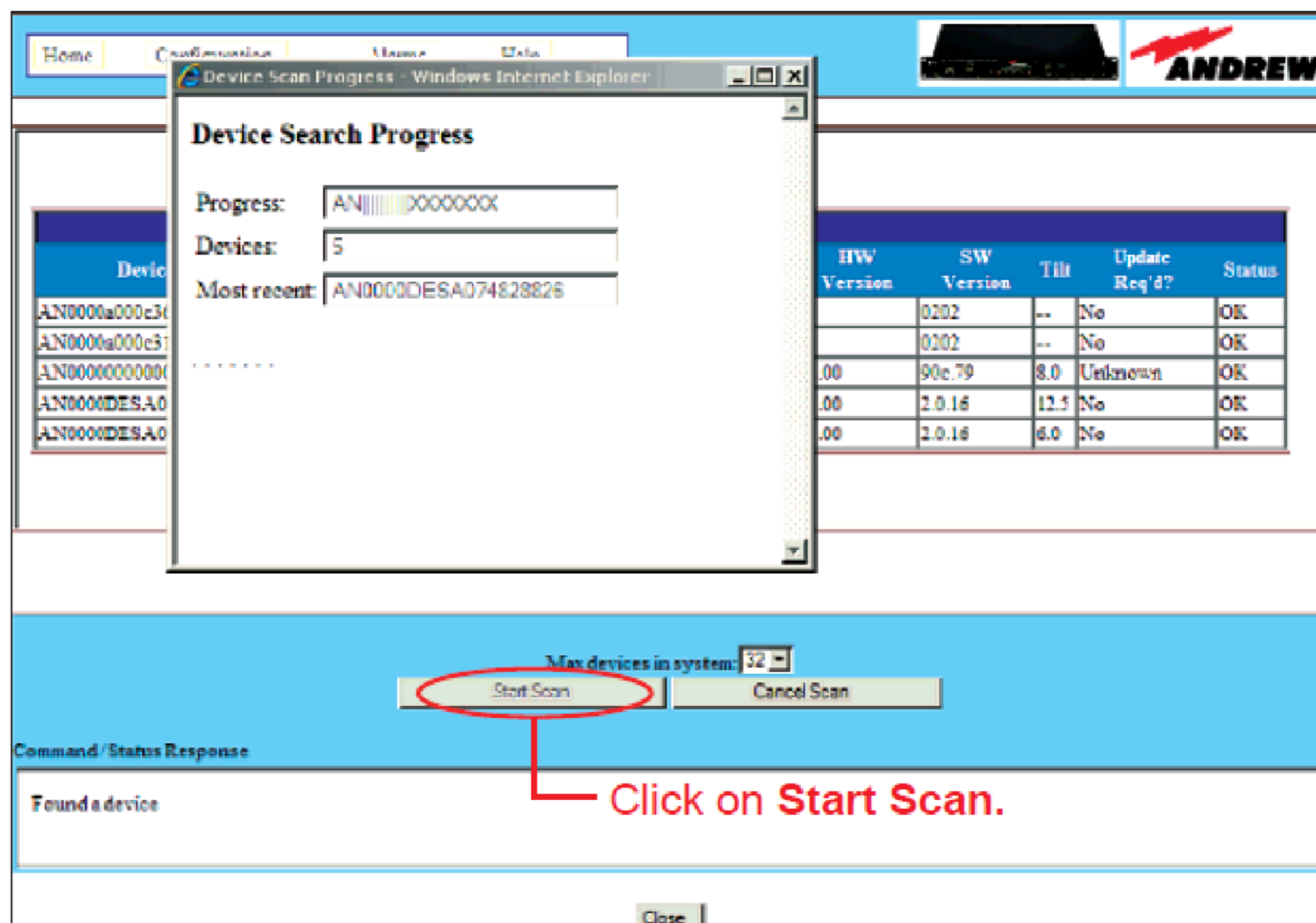


Figure 3. ATC300-1000/2000 **Device Search** Screen.

Firmware can be downloaded from the CommScope website:

- From the CommScope Products tab on www.commscope.com/Resources/Software. Scroll down to the **ATC300-1000/2000 Rack Mount Controller** link for complete user guide, Bulletin 639544.

2.0 Update CommScope Actuators

1. When the device scan is complete, the **Update Req'd** field displays the current firmware status. On the screen below, three actuators require updates (Figure 4).
2. Click on **Update Devices**.

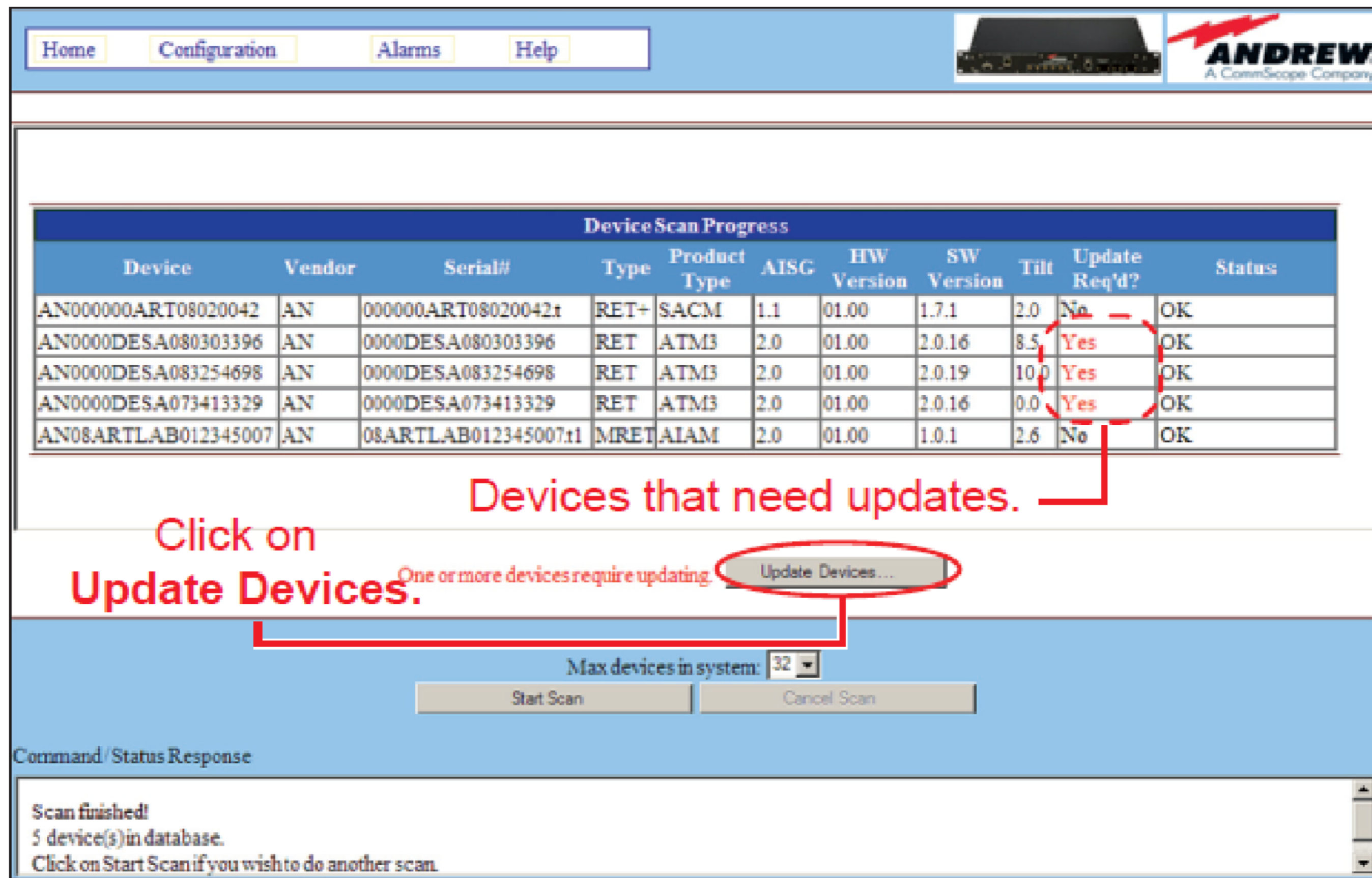


Figure 4. Device Scan Results Show Updates Required.

3. Only the devices in need of updates will appear on the **Device Upgrades Recommended** screen. Select desired updates. Click on **Install Firmware** (Figure 5). Firmware updates are applied to the selected devices individually.

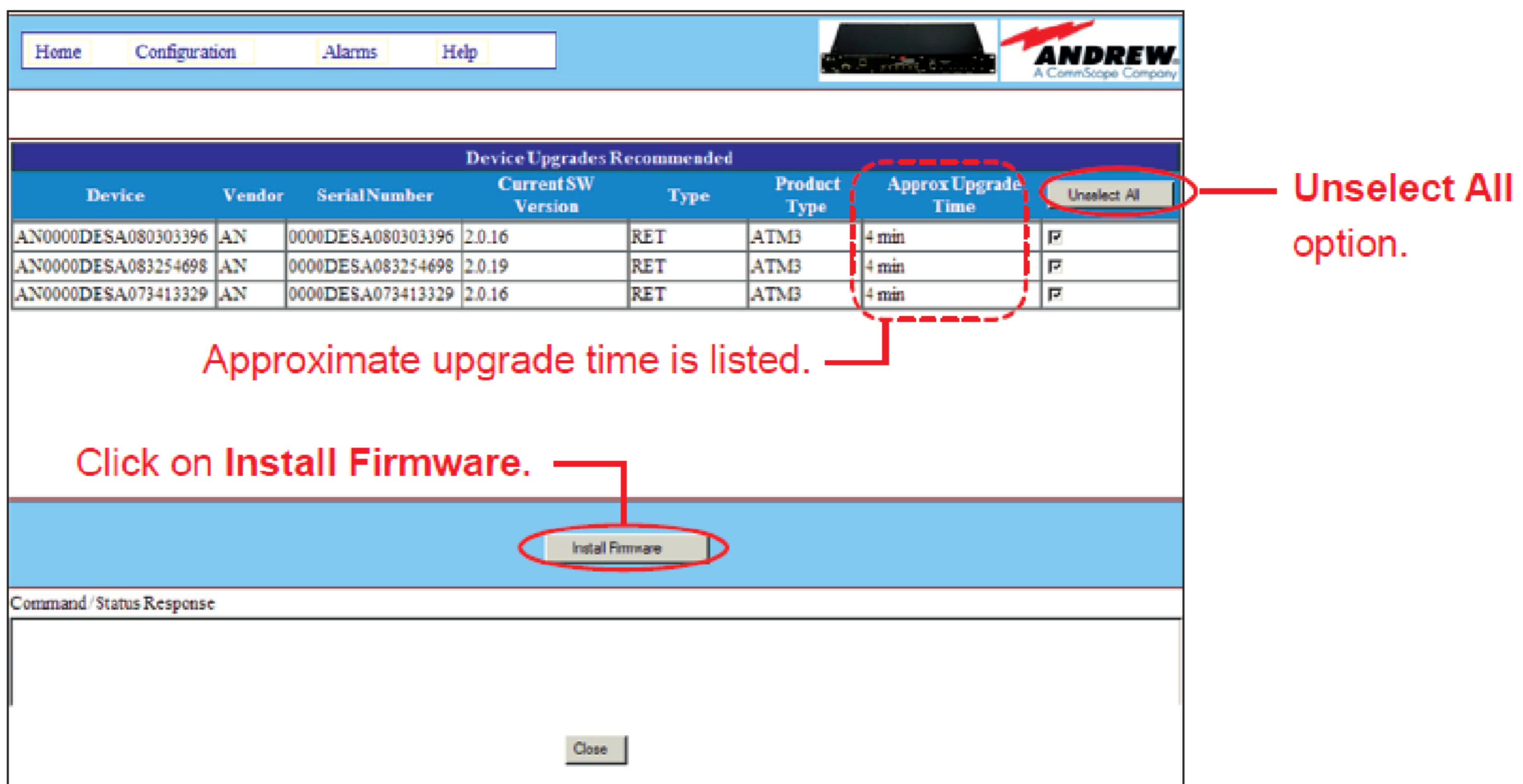


Figure 5. Initiating Updates.

Note: ATC300-1000/2000 does not provide auto-updates for TMAs at this time.

4. As each device is updated, the de-vice disappears from the screen. The Device Progress window in-dicates that the upgrade is finished (Figure 6).

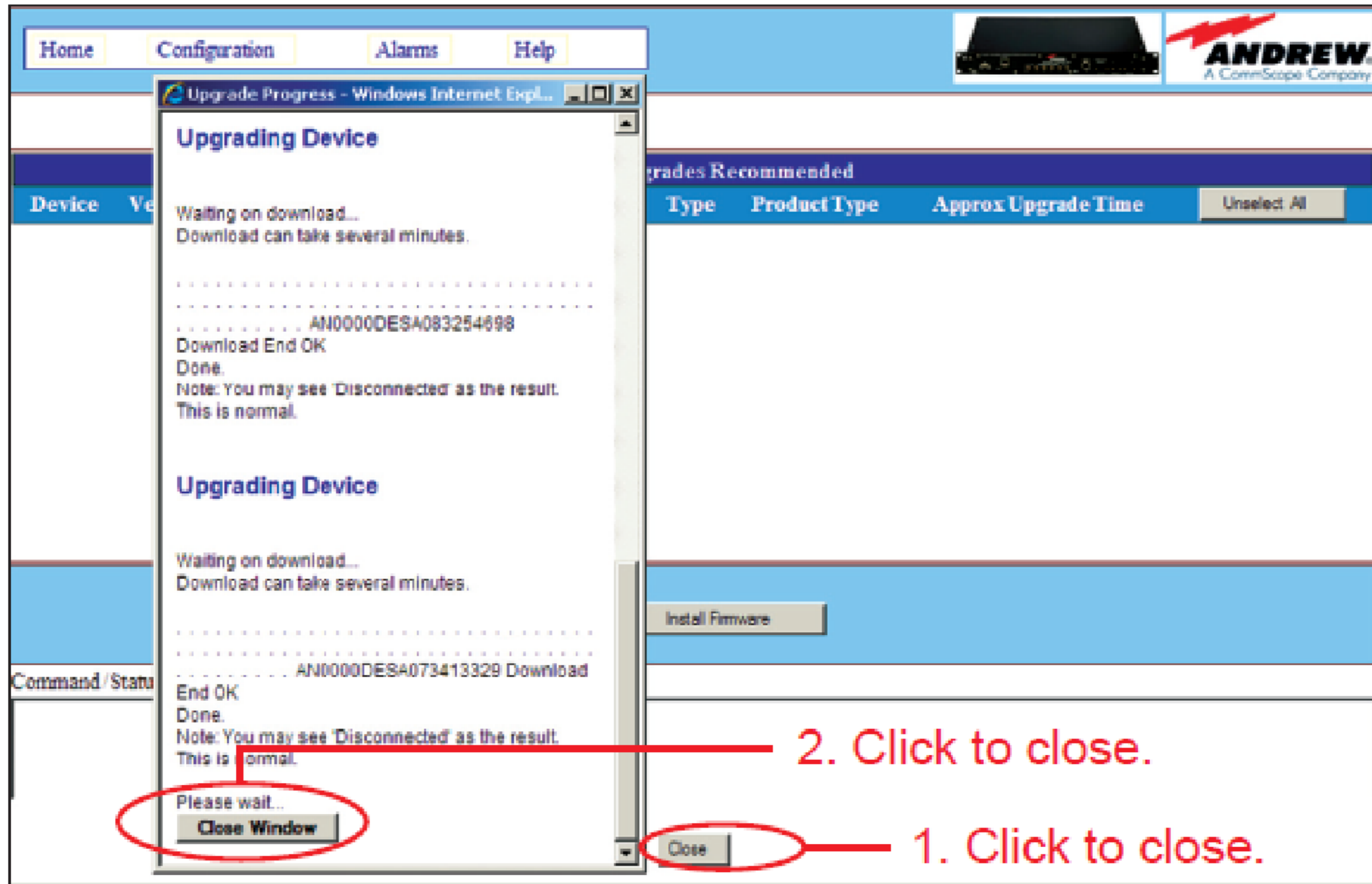


Figure 6. Upgrades Have Been installed.

5. The **Statistics** or **Device Scan** screen displays a list of the updated devices(Figure 7).

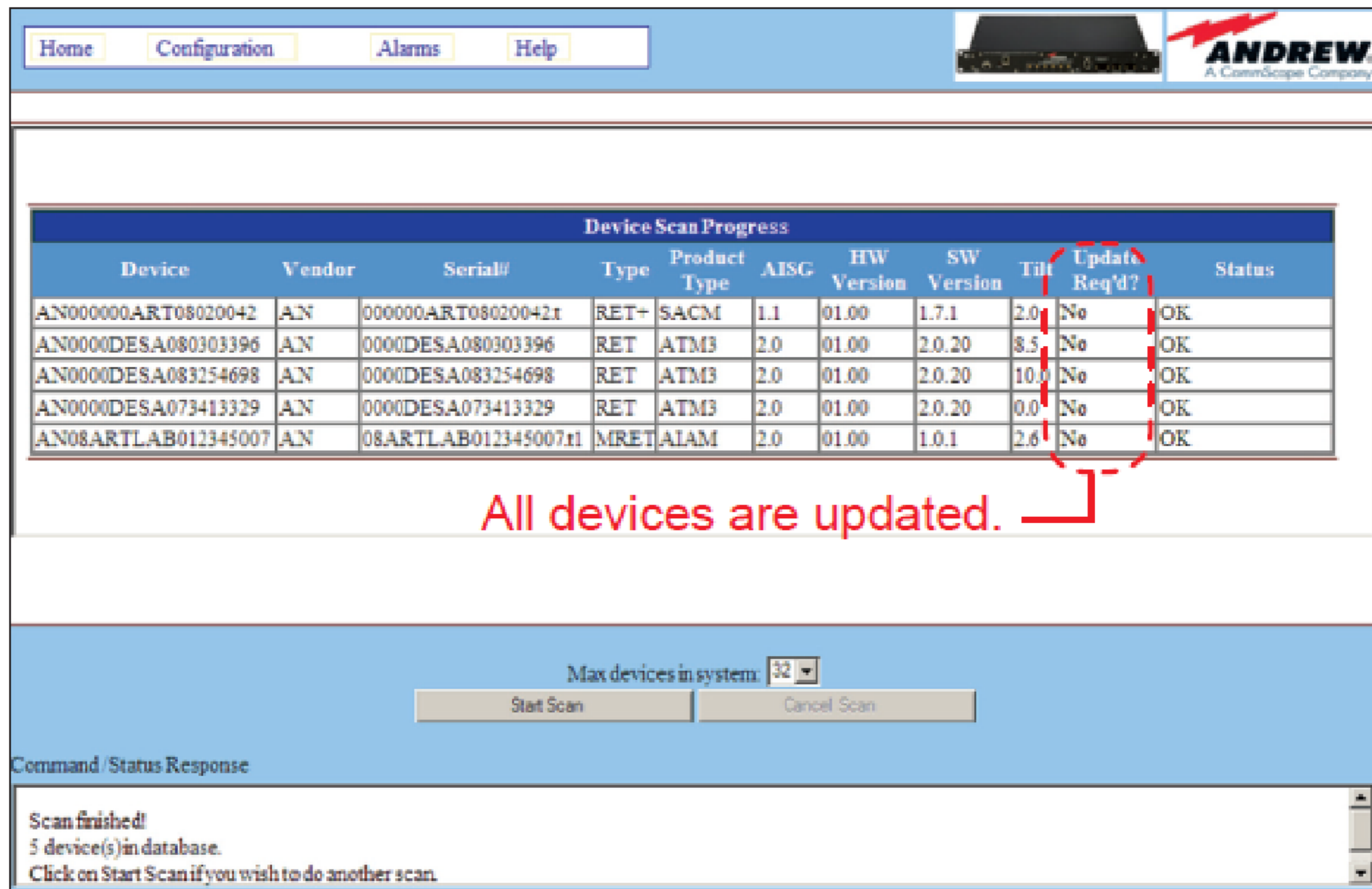


Figure 7. Devices Indicate Updated Firmware Versions.

6. CommScope TMAs and non-CommScope devices can be updated using the manual upgrade method. For details, see Section 9 in the ATC300-1000/2000 RET System Installation and Operation User Guide, Bulletin 639544.