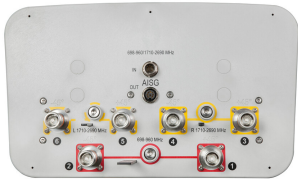


RVVPX306.11R-V2



6-port sector antenna, 2x 698–960 and 4x 1710–2690 MHz, 65° HPBW, 3x RET with manual override.

- Integrated Internal Remote Electrical Tilt (RET), with independent control of electrical tilt with manual override on all arrays
- All Internal RET actuators are connected in “Cascaded SRET” configuration
- Uses the 4.3-10 connector which is 40 percent smaller than the 7-16 DIN connector

OBSOLETE

This product was discontinued on: February 28, 2025

Replaced By:

RVV-65A-R3 6-port sector antenna, 2x 694–960 and 4x 1695–2690 MHz, 65° HPBW, 3x RET

General Specifications

| | |
|----------------------------------|--|
| Antenna Type | Sector |
| Band | Multiband |
| Grounding Type | RF connector inner conductor and body grounded to reflector and mounting bracket |
| Performance Note | Outdoor usage |
| Radome Material | ASA, UV stabilized |
| Radiator Material | Brass Low loss circuit board |
| Reflector Material | Aluminum |
| RF Connector Interface | 4.3-10 Female |
| RF Connector Location | Bottom |
| RF Connector Quantity, high band | 4 |
| RF Connector Quantity, mid band | 0 |
| RF Connector Quantity, low band | 2 |
| RF Connector Quantity, total | 6 |

Remote Electrical Tilt (RET) Information

| | |
|-------------------------|-----------------------------------|
| RET Interface | 8-pin DIN Female 8-pin DIN Male |
| RET Interface, quantity | 1 female 1 male |
| Input Voltage | 10–30 Vdc |

RVVPX306.11R-V2

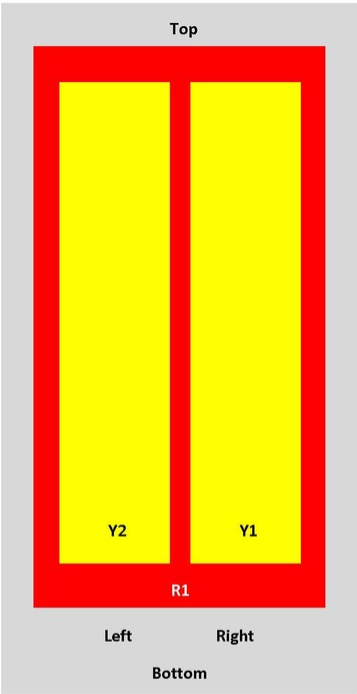
| | |
|---|------------------------------|
| Internal RET | High band (2) Low band (1) |
| Power Consumption, idle state, maximum | 2 W |
| Power Consumption, normal conditions, maximum | 13 W |
| Protocol | 3GPP/AISG 2.0 (Single RET) |

Dimensions

| | |
|----------------------------------|---------------------|
| Width | 353 mm 13.898 in |
| Depth | 209 mm 8.228 in |
| Length | 1600 mm 62.992 in |
| Net Weight, without mounting kit | 23 kg 50.706 lb |

Array Layout

RVVPX

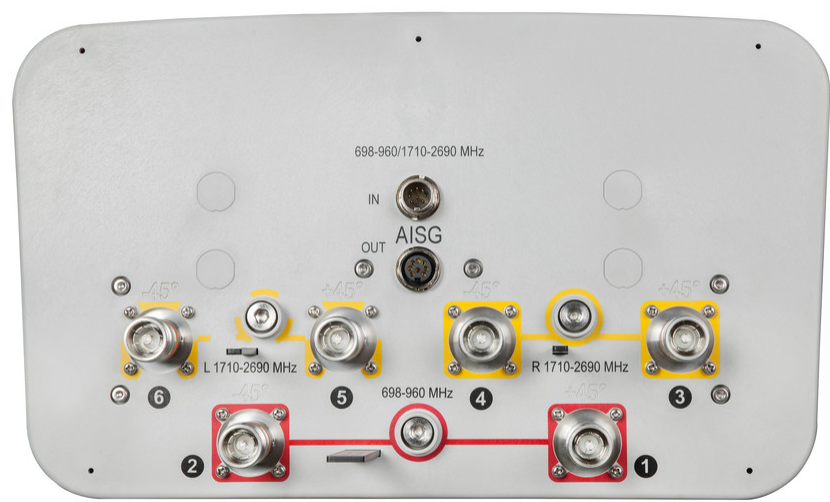


| Array | Freq (MHz) | Conns | RET (SRET) | AISG RET UID |
|-------|------------|-------|------------|----------------------|
| R1 | 698-960 | 1-2 | 1 | ARxxxxxxxxxxxxxxxxx1 |
| Y1 | 1710-2690 | 3-4 | 2 | ARxxxxxxxxxxxxxxxxx2 |
| Y2 | 1710-2690 | 5-6 | 3 | ARxxxxxxxxxxxxxxxxx3 |

View from the front of the antenna
(Sizes of colored boxes are not true depictions of array sizes)

RVVPX306.11R-V2

Port Configuration



Electrical Specifications

| | |
|--------------------------|---------------------------------|
| Impedance | 50 ohm |
| Operating Frequency Band | 1710 – 2690 MHz 698 – 960 MHz |
| Polarization | ±45° |

Electrical Specifications

| Frequency Band, MHz | 698–790 | 790–890 | 890–960 | 1710–1920 | 1920–2170 | 2300–2690 |
|---------------------------------|---------|---------|---------|-----------|-----------|-----------|
| Gain, dBi | 14.1 | 14.8 | 14.9 | 17.2 | 17.6 | 18.2 |
| Beamwidth, Horizontal, degrees | 68.2 | 68.7 | 63 | 62 | 63.1 | 61.4 |
| Beamwidth, Vertical, degrees | 16.4 | 14.7 | 13.4 | 7.5 | 6.7 | 5.4 |
| Beam Tilt, degrees | 0–10 | 0–10 | 0–10 | 0–10 | 0–10 | 0–10 |
| USLS (First Lobe), dB | 18 | 18 | 18 | 18 | 18 | 18 |
| Null Fill, dB | | | | -22 | -22 | -22 |
| Front-to-Back Ratio at 180°, dB | 25 | 24 | 25 | 29 | 32 | 30 |
| CPR at Boresight, dB | 15.9 | 12 | 13.4 | 20 | 17 | 15 |
| CPR at Sector, dB | 10 | 10 | 7 | 7 | 5.4 | 3 |

RVVPX306.11R-V2

| | | | | | | |
|--------------------------------------|-------------|-------------|-------------|------------|------------|------------|
| Isolation, Cross Polarization, dB | 25 | 25 | 25 | 25 | 25 | 25 |
| Isolation, Inter-band, dB | 30 | 30 | 30 | 30 | 30 | 30 |
| VSWR Return loss, dB | 1.43 15.0 | 1.43 15.0 | 1.43 15.0 | 1.5 14.0 | 1.5 14.0 | 1.5 14.0 |
| PIM, 3rd Order, 2 x 20 W, dBc | -150 | -150 | -150 | -150 | -150 | -150 |
| Input Power per Port, maximum, watts | 300 | 300 | 300 | 250 | 250 | 250 |

Mechanical Specifications

| | |
|----------------------------------|---|
| Wind Loading @ Velocity, frontal | 748.0 N @ 150 km/h (168.2 lbf @ 150 km/h) |
| Wind Loading @ Velocity, rear | 634.0 N @ 150 km/h (142.5 lbf @ 150 km/h) |
| Wind Speed, maximum | 250 km/h (155 mph) |

Packaging and Weights

| | |
|----------------|---------------------|
| Width, packed | 427 mm 16.811 in |
| Depth, packed | 325 mm 12.795 in |
| Length, packed | 1787 mm 70.354 in |
| Weight, gross | 40 kg 88.185 lb |

Regulatory Compliance/Certifications

| Agency | Classification |
|---------------|--|
| CE | Compliant with the relevant CE product directives |
| ISO 9001:2015 | Designed, manufactured and/or distributed under this quality management system |



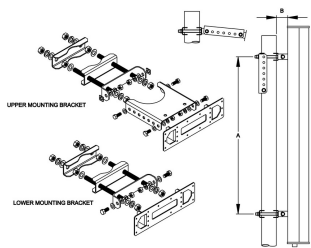
Included Products

| | | |
|------------|---|--|
| T-041-GL-E | – | Adjustable Tilt Pipe Mounting Kit for 2.0"-4.5" (60-115mm) OD round members for panel antennas. Includes 2 clamp sets. |
|------------|---|--|

* Footnotes

| | |
|------------------|---|
| Performance Note | Severe environmental conditions may degrade optimum performance |
|------------------|---|

T-041-GL-E



Adjustable Tilt Pipe Mounting Kit for 2.0"-4.5" (60-115mm) OD round members for panel antennas. Includes 2 clamp sets.

Product Classification

Product Type Adjustable tilt mounting kit

General Specifications

Application Outdoor

Color Silver

Dimensions

Compatible Length, maximum 1500 mm | 59.055 in

Compatible Length, minimum 1200 mm | 47.244 in

Compatible Diameter, maximum 115 mm | 4.528 in

Compatible Diameter, minimum 60 mm | 2.362 in

Antenna-to-Pipe Distance 85 mm | 3.346 in

Bracket-to-Bracket Distance 976 mm | 38.425 in

Weight, net 5.5 kg | 12.125 lb

Material Specifications

Material Type Galvanized steel

Mechanical Specifications

Mechanical Tilt 0°–12° in steps of 2°

Packaging and Weights

Included Brackets | Hardware

Packaging quantity 1

Regulatory Compliance/Certifications

| Agency | Classification |
|--------|---|
| CE | Compliant with the relevant CE product directives |

T-041-GL-E

| | |
|---------------|--|
| CHINA-ROHS | Below maximum concentration value |
| ISO 9001:2015 | Designed, manufactured and/or distributed under this quality management system |
| REACH-SVHC | Compliant as per SVHC revision on www.andrew.com/ProductCompliance |
| ROHS | Compliant |
| UK-ROHS | Compliant |

