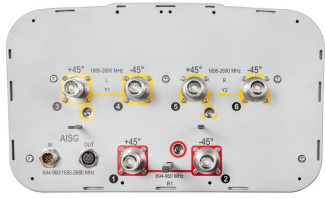


# RVVPX310.11R-V3



6-port sector antenna, 2x 694–960 and 4x 1695–2690 MHz, 65° HPBW, 3x RET with manual override.

- Integrated Internal Remote Electrical Tilt (RET), with independent control of electrical tilt with manual override on all arrays
- All Internal RET actuators are connected in “Cascaded SRET” configuration
- Uses the 4.3-10 connector which is 40 percent smaller than the 7-16 DIN connector

## OBSOLETE

This product was discontinued on: November 30, 2023

## General Specifications

<b>Antenna Type</b>	Sector
<b>Band</b>	Multiband
<b>Color</b>	Light Gray (RAL 7035)
<b>Grounding Type</b>	RF connector inner conductor and body grounded to reflector and mounting bracket
<b>Performance Note</b>	Outdoor usage   Wind loading figures are validated by wind tunnel measurements described in white paper WP-112534-EN
<b>Radome Material</b>	Fiberglass, UV resistant
<b>Radiator Material</b>	Low loss circuit board
<b>Reflector Material</b>	Aluminum
<b>RF Connector Interface</b>	4.3-10 Female
<b>RF Connector Location</b>	Bottom
<b>RF Connector Quantity, high band</b>	4
<b>RF Connector Quantity, low band</b>	2
<b>RF Connector Quantity, total</b>	6

## Remote Electrical Tilt (RET) Information

<b>RET Interface</b>	8-pin DIN Female   8-pin DIN Male
<b>RET Interface, quantity</b>	1 female   1 male
<b>Input Voltage</b>	10–30 Vdc
<b>Internal RET</b>	High band (2)   Low band (1)

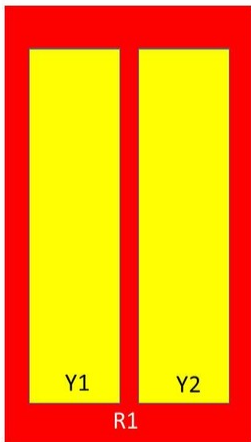
# RVVPX310.11R-V3

<b>Power Consumption, idle state, maximum</b>	2 W
<b>Power Consumption, normal conditions, maximum</b>	13 W
<b>Protocol</b>	3GPP/AISG 2.0 (Single RET)

## Dimensions

<b>Width</b>	350 mm   13.78 in
<b>Depth</b>	208 mm   8.189 in
<b>Length</b>	2533 mm   99.724 in
<b>Net Weight, without mounting kit</b>	32 kg   70.548 lb

## Array Layout



Array	Freq (MHz)	Conns	RET (SRET)	AISG RET UID
R1	694-960	1-2	1	ARxxxxxxxxxxxxxxxxx1
Y1	1695-2690	3-4	2	ARxxxxxxxxxxxxxxxxx2
Y2	1695-2690	5-6	3	ARxxxxxxxxxxxxxxxxx3

Left                  Right  
Bottom

(Sizes of colored boxes are not true depictions of array sizes)

## Port Configuration

# RVVPX310.11R-V3



## Electrical Specifications

<b>Impedance</b>	50 ohm
<b>Operating Frequency Band</b>	1695 – 2690 MHz   694 – 960 MHz
<b>Polarization</b>	±45°
<b>Total Input Power, maximum</b>	1,000 W @ 50 °C

## Electrical Specifications

Frequency Band, MHz	694–790	790–890	890–960	1695–1880	1850–1990	1920–2180	2300–2690
<b>Gain, dBi</b>	16.3	16.7	17	17.4	17.8	18	18.5
<b>Beamwidth, Horizontal, degrees</b>	69	67	64	62	60	62	61
<b>Beamwidth, Vertical, degrees</b>	10	8.9	8.2	7.6	7.1	6.6	5.5
<b>Beam Tilt, degrees</b>	0–10	0–10	0–10	0–10	0–10	0–10	0–10
<b>USLS (First Lobe), dB</b>	20	20	21	21	20	20	20
<b>Null Fill, dB</b>	-17	-19	-20	-27	-26	-26	-21
<b>Front-to-Back Ratio at 180°, dB</b>	30	31	31	34	39	38	39
<b>Isolation, Cross Polarization, dB</b>	28	28	28	30	30	30	30
<b>Isolation, Inter-band, dB</b>	30	30	30	30	30	30	30

# RVVPX310.11R-V3

<b>VSWR   Return loss, dB</b>	1.5 14.0	1.5 14.0	1.5 14.0	1.5 14.0	1.5 14.0	1.5 14.0	1.5 14.0
<b>PIM, 3rd Order, 2 x 20 W, dBc</b>	-153	-153	-153	-153	-153	-153	-153
<b>Input Power per Port at 50°C, maximum, watts</b>	200	200	200	175	175	175	175

## Electrical Specifications, BASTA

<b>Frequency Band, MHz</b>	<b>694–790</b>	<b>790–890</b>	<b>890–960</b>	<b>1695–1880</b>	<b>1850–1990</b>	<b>1920–2180</b>	<b>2300–2690</b>
<b>Gain by all Beam Tilts, average, dBi</b>	16	16.6	16.9	17	17.5	17.8	18.2
<b>Gain by all Beam Tilts Tolerance, dB</b>	±0.6	±0.2	±0.1	±0.4	±0.4	±0.3	±0.5
<b>Gain by Beam Tilt, average, dBi</b>	0° 16.0 5° 16.0 10° 16.0	0° 16.6 5° 16.6 10° 16.6	0° 16.9 5° 16.9 10° 16.9	0° 17.0 5° 17.0 10° 17.1	0° 17.5 5° 17.5 10° 17.6	0° 17.8 5° 17.8 10° 17.8	0° 18.3 5° 18.3 10° 18.3
<b>Beamwidth, Horizontal Tolerance, degrees</b>	±0.9	±1.1	±1.9	±3	±1.5	±2.7	±6.3
<b>Beamwidth, Vertical Tolerance, degrees</b>	±0.7	±0.4	±0.3	±0.4	±0.3	±0.5	±0.4
<b>USLS, beampeak to 20° above beampeak, dB</b>	20	20	21	20	20	19	19
<b>Front-to-Back Total Power at 180° ± 30°, dB</b>	26	26	26	27	28	26	29
<b>CPR at Boresight, dB</b>	15	17	17	18	21	20	19
<b>CPR at Sector, dB</b>	12	12	14	12	12	12	9

## Mechanical Specifications

<b>Wind Loading @ Velocity, frontal</b>	445.0 N @ 150 km/h (100.0 lbf @ 150 km/h)
<b>Wind Loading @ Velocity, lateral</b>	379.0 N @ 150 km/h (85.2 lbf @ 150 km/h)
<b>Wind Loading @ Velocity, maximum</b>	942.0 N @ 150 km/h (211.8 lbf @ 150 km/h)
<b>Wind Loading @ Velocity, rear</b>	472.0 N @ 150 km/h (106.1 lbf @ 150 km/h)
<b>Wind Speed, maximum</b>	241 km/h (150 mph)

## Packaging and Weights

<b>Width, packed</b>	436 mm   17.165 in
<b>Depth, packed</b>	320 mm   12.598 in
<b>Length, packed</b>	2720 mm   107.087 in
<b>Weight, gross</b>	54 kg   119.049 lb

## Regulatory Compliance/Certifications

# RVVPX310.11R-V3

---

Agency	Classification
CE	Compliant with the relevant CE product directives
CHINA-ROHS	Above maximum concentration value
ISO 9001:2015	Designed, manufactured and/or distributed under this quality management system
ROHS	Compliant/Exempted
UK-ROHS	Compliant/Exempted



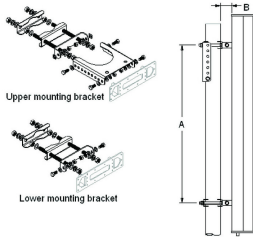
## Included Products

- T-029-GL-E – Adjustable Tilt Pipe Mounting Kit for 2.362"-4.5" (60-115mm) OD round members for panel antennas. Includes 2 clamp sets.

## \* Footnotes

**Performance Note** Severe environmental conditions may degrade optimum performance

# T-029-GL-E



Adjustable Tilt Pipe Mounting Kit for 2.362"-4.5" (60-115mm) OD round members for panel antennas. Includes 2 clamp sets.

## Product Classification

**Product Type** Adjustable tilt mounting kit

## General Specifications

**Application** Outdoor

**Color** Silver

## Dimensions

**Compatible Length, maximum** 2850 mm | 112.205 in

**Compatible Length, minimum** 1500 mm | 59.055 in

**Compatible Diameter, maximum** 115 mm | 4.528 in

**Compatible Diameter, minimum** 60 mm | 2.362 in

**Antenna-to-Pipe Distance** 85 mm | 3.346 in

**Bracket-to-Bracket Distance** 1400 mm | 55.118 in

**Weight, net** 6 kg | 13.228 lb

## Material Specifications

**Material Type** Galvanized steel

## Mechanical Specifications

**Mechanical Tilt** 0°-8°

## Packaging and Weights

**Included** Brackets | Hardware

**Packaging quantity** 1

## Regulatory Compliance/Certifications

Agency	Classification
CE	Compliant with the relevant CE product directives

# T-029-GL-E

---

CHINA-ROHS	Below maximum concentration value
ISO 9001:2015	Designed, manufactured and/or distributed under this quality management system
REACH-SVHC	Compliant as per SVHC revision on <a href="http://www.commscope.com/ProductCompliance">www.commscope.com/ProductCompliance</a>
ROHS	Compliant
UK-ROHS	Compliant

