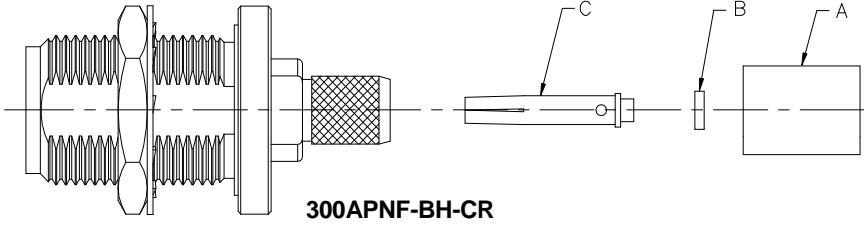


Installation Instructions

Connector Attachment

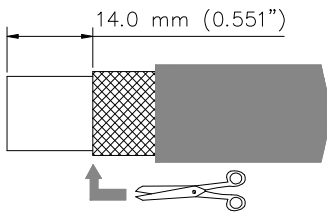
For Braided Cable CNT-300
N Female, Straight, Solder Pin,
Crimp-type Body: 300APNF-BH-CR



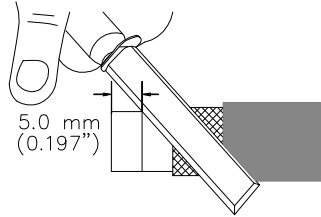
1 Remove 23.5 mm (0.925") of Jacket only.

23.5 mm (0.925")

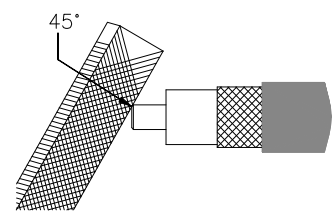
2 Trim 14.0 mm (0.551") of Braid, exposing foam.



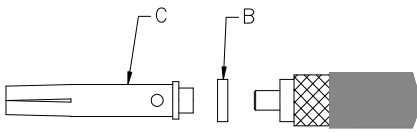
3 Remove 5.0 mm (0.197") of foam, exposing center conductor.



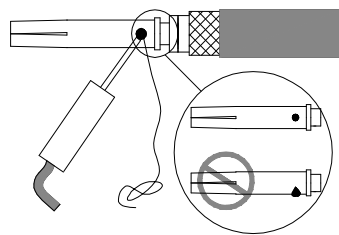
4 Chamfer the center conductor at a 45° angle.



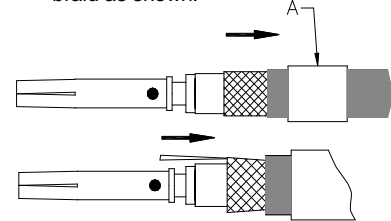
5 Push parts B, C onto the cable center conductor.



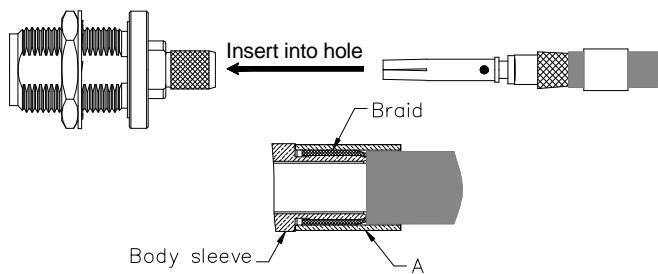
6 Solder part C and cable center conductor together. Inspect soldering point, solder should fill cup but not spill over.



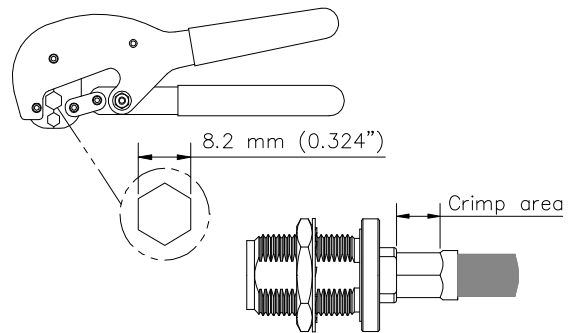
7 Slide part A onto cable, splay out braid as shown.



8 The cable attachment must be straight and aligned with the hole of connector insulator. Insert cable attachment into connector body until stopped; the center conductor must be inserted into insulator hole. Make sure the braid covers the body sleeve; then push part A onto braid.



9 Crimp part A at the area as shown. Crimp tool part number is: CTBC.



| 50 | 表一 有毒有害物质或元素名称及含量标识格式 | | | | | |
|------------------|-----------------------|--------|--------|------------|------------|--------------|
| | 有毒有害物质或元素 | | | | | |
| 部件名称 (Part Name) | 铅 (Pb) | 汞 (Hg) | 镉 (Cd) | 六价铬 (Cr6+) | 多溴联苯 (PBB) | 多溴二苯醚 (PBDE) |
| 连接器 (Connector) | X | O | O | O | O | O |

O: 表示有毒有害物质在该部件所有的均质材料中的含量均在SJ/T 11363-2006规定的限量要求以下。
X: 表示该有毒有害物质至少在该部件的某一均质材料中的含量超出SJ/T 11363-2006规定的限量要求。

Installation Training Available at Andrew Institute

Notice: Andrew disclaims any liability or responsibility for the results of improper or unsafe installation, inspection, maintenance, or removal practices



Andrew Corporation
3 Westbrook Corporate Center, Suite 900, Westchester, Illinois U.S.A. 60154
+1 (779) 435-8579 Fax (U.S.A.): 1-800-349-5444
www.andrew.com
Copyright © 2007 by Andrew Corporation

Customer Service, 24 hours
U.S.A., Canada, Mexico: 1-800-255-1479
U.K.: 0800 250055
Other Europe: +44 592 782 612

