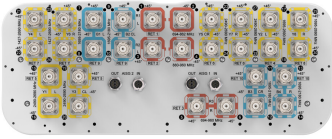


# EGRZZH4T4VV65DR10



30-port sector antenna, 2x 694-862 (R1), 2x 880-960 (R2), 2x 694-960 (R3), 4x 1427-2690 (Y4/Y6), 8x 1695-2180 (B1-B4), 8x 2490-2690 (Y1 /Y3/Y5/Y7) & 4x 1695-2690 (Y2&Y8) MHz, 65° HPBW, 10x RET.

- All Internal RET actuators are connected in “Cascaded SRET” configuration
- Supports re-configurable antenna sharing capability enabling control of the internal RET system using up to two separate RET compatible OEM radios
- RET configuration is factory pre-set for antenna sharing - R2, B1, B2, Y1, Y3, Y4, Y6 assigned to AISG2 / R1, R3, B3, B4, Y2, Y5, Y7, Y8 assigned to AISG1

## General Specifications

<b>Antenna Type</b>	Sector
<b>Band</b>	Multiband
<b>Color</b>	Light Gray (RAL 7035)
<b>Grounding Type</b>	RF connector inner conductor and body grounded to reflector and mounting bracket
<b>Performance Note</b>	Outdoor usage
<b>Radome Material</b>	Fiberglass, UV resistant
<b>Radiator Material</b>	Low loss circuit board
<b>Reflector Material</b>	Aluminum
<b>RF Connector Interface</b>	4.3-10 Female
<b>RF Connector Location</b>	Bottom
<b>RF Connector Quantity, high band</b>	24
<b>RF Connector Quantity, mid band</b>	0
<b>RF Connector Quantity, low band</b>	6
<b>RF Connector Quantity, total</b>	30

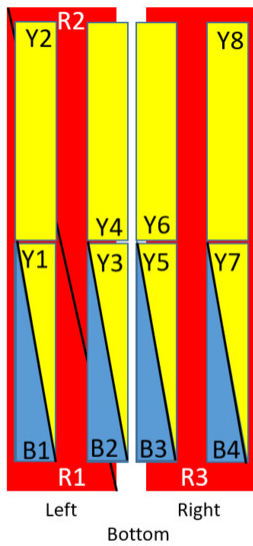
## Remote Electrical Tilt (RET) Information

<b>RET Hardware</b>	CommRET v2
<b>RET Interface</b>	8-pin DIN Female   8-pin DIN Male
<b>RET Interface, quantity</b>	2 female   2 male
<b>Input Voltage</b>	10–30 Vdc
<b>Internal RET</b>	High band (7)   Low band (3)
<b>Power Consumption, active state, maximum</b>	8 W

# EGRZZH4T4VV65DR10

<b>Power Consumption, idle state, maximum</b>	1 W
<b>Protocol</b>	3GPP/AISG 2.0 (Single RET)
<b>Dimensions</b>	
<b>Width</b>	498 mm   19.606 in
<b>Depth</b>	197 mm   7.756 in
<b>Length</b>	2688 mm   105.827 in
<b>Net Weight, antenna only</b>	67.3 kg   148.371 lb

## Array Layout

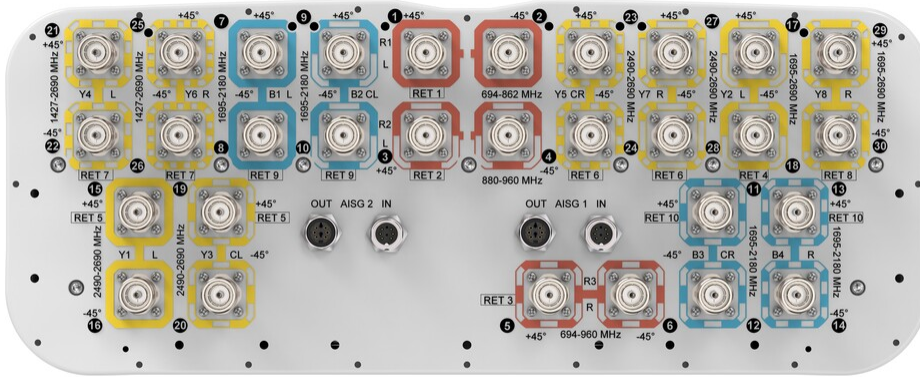


(Sizes of colored boxes are not true depictions of array sizes)

Array	Freq (MHz)	Conns	RET (SRET)	AISG RET UID	AISG
R1	694-862	1-2	1	CPxxxxxxxxxxxxR1	AISG 1
R2	880-960	3-4	2	CPxxxxxxxxxxxxR2	AISG 2
R3	694-960	5-6	3	CPxxxxxxxxxxxxR3	AISG 1
B1	1695-2180	7-8	9	CPxxxxxxxxxxxxB1	AISG 2
B2	1695-2180	9-10			
B3	1695-2180	11-12	10	CPxxxxxxxxxxxxB3	AISG 1
B4	1695-2180	13-14			
Y1	2490-2690	15-16	5	CPxxxxxxxxxxxxY1	AISG 2
Y3	2490-2690	19-20			
Y5	2490-2690	23-24			
Y7	2490-2690	27-28	6	CPxxxxxxxxxxxxY5	AISG 1
Y4	1427-2690	21-22	7	CPxxxxxxxxxxxxY4	AISG 2
Y6	1427-2690	25-26			
Y2	1695-2690	17-18	4	CPxxxxxxxxxxxxY2	AISG 1
Y8	1695-2690	29-30	8	CPxxxxxxxxxxxxY8	AISG 1

## Port Configuration

# EGRZZH4T4VV65DR10



## Electrical Specifications

<b>Impedance</b>	50 ohm
<b>Operating Frequency Band</b>	1427 – 1518 MHz   1695 – 2180 MHz   1695 – 2690 MHz   2490 – 2690 MHz   694 – 862 MHz   694 – 960 MHz   880 – 960 MHz
<b>Polarization</b>	±45°
<b>Total Input Power, maximum</b>	900 W @ 50 °C

## Electrical Specifications

	R1/R3	R2/R3	B1-B4	B1-B4	Y1/Y3/Y5/Y7	Y2/Y4/Y6/Y8	Y2/Y4/Y6/Y8	Y4/Y6
<b>Frequency Band, MHz</b>	694–862	880–960	1695–1880	1920–2180	2490–2690	1695–2180	2490–2690	1427–1518
<b>RF Port</b>	1,2,5,6	3,4,5,6	7-14	7-14	15,16,19,20,23,24,27,28	17,18,21,22,25,26,29,30	17,18,21,22,25,26,29,30	21,22,25,26
<b>Gain, dBi</b>	15.9	16	15.8	16.8	17.5	17.1	17.8	15
<b>Beamwidth, Horizontal, degrees</b>	68	64	69	63	56	62	55	71
<b>Beamwidth, Vertical, degrees</b>	8.6	7.4	7.4	6.7	5.5	7.2	5.4	9.4
<b>Beam Tilt, degrees</b>	2–14	2–14	2–12	2–12	2–12	2–12	2–12	2–12
<b>USLS (First Lobe), dB</b>	15	15	16	16	14	16	18	19
<b>Front-to-Back Ratio at 180°, dB</b>	32	29	32	30	27	33	31	34
<b>Isolation,</b>	28	28	25	25	25	25	25	25

# EGRZZH4T4VV65DR10

<b>Cross Polarization, dB</b>								
<b>Isolation, Inter-band, dB</b>	28	28	25	25	25	25	25	25
<b>VSWR   Return loss, dB</b>	1.5 14.0	1.5 14.0	1.5 14.0	1.5 14.0	1.5 14.0	1.5 14.0	1.5 14.0	1.5 14.0
<b>PIM, 3rd Order, 2 x 20 W, dBc</b>	-150	-150	-150	-150	-150	-150	-150	-150
<b>Input Power per Port at 50°C, maximum, watts</b>	200	200	200	200	150	200	200	200

## Mechanical Specifications

<b>Wind Loading @ Velocity, frontal</b>	914.0 N @ 150 km/h (205.5 lbf @ 150 km/h)
<b>Wind Loading @ Velocity, lateral</b>	239.0 N @ 150 km/h (53.7 lbf @ 150 km/h)
<b>Wind Loading @ Velocity, maximum</b>	1,215.0 N @ 150 km/h (273.1 lbf @ 150 km/h)
<b>Wind Loading @ Velocity, rear</b>	629.0 N @ 150 km/h (141.4 lbf @ 150 km/h)
<b>Wind Speed, maximum</b>	241 km/h (150 mph)

## Packaging and Weights

<b>Width, packed</b>	565 mm   22.244 in
<b>Depth, packed</b>	309 mm   12.165 in
<b>Length, packed</b>	2935 mm   115.551 in
<b>Weight, gross</b>	88.3 kg   194.668 lb

## Regulatory Compliance/Certifications

<b>Agency</b>	<b>Classification</b>
CHINA-ROHS	Below maximum concentration value
ISO 9001:2015	Designed, manufactured and/or distributed under this quality management system
REACH-SVHC	Compliant as per SVHC revision on <a href="http://www.andrew.com/ProductCompliance">www.andrew.com/ProductCompliance</a>
ROHS	Compliant
UK-ROHS	Compliant

# EGRZZH4T4VV65DR10

---



## Included Products

- |           |   |  |
|-----------|---|--|
| BSAMNT-4  | - | Wide Profile Antenna Downtilt Mounting Kit for 2.4 - 4.5 in (60 - 115 mm) OD round members. Kit contains one scissor top bracket set and one bottom bracket set. |
| BSAMNT-M4 | - | Middle Downtilt Mounting Kit for Long Antennas for 2.4 - 4.5 in (60 - 115 mm) OD round members. Kit contains one scissor bracket set.                            |

## \* Footnotes

**Performance Note** Severe environmental conditions may degrade optimum performance