

iPatch® Upgrade Module for SYSTIMAX 360™ Panels and InstaPATCH® QUATTRO Panel Installation

General

These instructions describe how to install **iPatch®** upgrade modules on standard **SYSTIMAX 360™ PATCHMAX®** panels, **SYSTIMAX 360** Evolve modular panels (both flat and angled), and the **InstaPATCH® QUATTRO** panel for use with an **iPatch** system.

One upgrade module is used for a 24-port panel and two upgrade modules are used for a 48-port panel. The panels can be used in an **iPatch** system for both EIA-T568A and EIA-T568B wiring applications.

Refer to the following instruction sheets for installation and cabling the specific panels:

- **SYSTIMAX 360 PATCHMAX Panel Installation Instructions** (860488808)
- **SYSTIMAX 360 1100GS3 & 1100GS6 Evolve Modular Panel Instructions** (860509967)
- **SYSTIMAX 360 FTP Evolve Panel Instructions** (860509975)
- **InstaPATCH QUATTRO Modular Panel Installation Instructions** (860514066)

Ordering information is listed below:

| Material ID | Part No. | Description |
|-------------|--------------------------|---|
| 760198747 | 360-iP-UP-KIT-E-24 | 360 iPatch upgrade kit, Evolve panel, 24-port 10pk (for 10 panels) |
| 760198754 | 360-iP-UP-KIT-E+PMAX-48 | 360 iPatch upgrade kit, Evolve and PATCHMAX panel, 48-port 5pk (for 5 panels) |
| 760158600 | 360-iP-UP-KIT-AE-24 | 360 iPatch upgrade kit, Evolve angled panel, 24-port (10 pk) |
| 760158618 | 360-iP-UP-KIT-AE-48 | 360 iPatch upgrade kit, Evolve angled panel, 48-port (5 pk) |
| 760198762 | 360-iP-UP-KIT-PMAX-2U-24 | 360 iPatch upgrade kit, PATCHMAX panel, 2U 24-port (10 pk) |
| 760159905 | 360-iP-UP-KIT-IPQ-24P | 360 iPatch upgrade kit, InstaPatch QUATTRO panel, 24-port (10 pk) |

How to Contact Us

- To find out more about **CommScope®** products, visit us on the web at www.commscope.com/
- For technical assistance:
 - Within the United States, contact your local account representative or technical support at 1-800-344-0223. Outside the United States, contact your local account representative or **PartnerPRO™** Network Partner.
 - Within the United States, report any missing/damaged parts or any other issues to **CommScope** Customer Claims at 1-866-539-2795 or email to claims@commscope.com. Outside the United States, contact your local account representative or **PartnerPRO** Network Partner.

The **iPatch** system is covered by one or more of the following U.S. patents or their foreign equivalents: 6,285,293, 6,522,737, and 8,344,900.



 **WARNING – Important Safety Instructions**

- To reduce the risk of fire, electric shock, and injury to persons, read, understand, and adhere to the following instructions as well as any warnings marked on the product.
- Remote risk of electric shock. Never install the product in wet locations or during lightning storms. Never touch uninsulated communication wires or terminals.
- **Caution:** All wiring that connects to this equipment must meet applicable local and national building codes and network wiring standards for communication cable.
- **iPatch** upgrade modules use infrared sensing technology and should be installed where they are not exposed to direct sunlight or other infrared sources.

 **Important: Limits for iPatch panel connections to panel bus**

- Limit the chain of **iPatch** panels connected to each cable bus port to a maximum of five (5) panels (including controller). Start a new chain of panels with every 6th panel in the rack system.

Overview

To prepare panels for use with an **iPatch** System, the following steps must be performed:

Step 1 – Install a panel bus for the rack

Step 2 – Install the **iPatch** panel manager to supervise the rack

Step 3 – Install an **iPatch** upgrade module on each existing panel

Step 4 – Connect each panel to the panel bus

Step 5 – Program the order of the panels in the rack

Step 1 – Install Panel Bus

A panel bus must be installed on each rack where you plan to install or upgrade panels. The panel bus allows the **iPatch** manager and **iPatch** panels to communicate. Also, the **iPatch** manager supplies power to the **iPatch** panels through the panel bus.

Note: It is recommended the panel bus assembly be mounted on either the outside of the rear flange on the equipment rack or, if panels/shelves will be used that may block access to it, on the side of the vertical cable manager next to the rack.

To mount the panel bus on a rack other than a 7-foot (2.1m) rack or on a rack with a hole pattern other than the universal hole pattern, contact your local account representative.

For instructions on installing the panel bus on the rack, see **SYSTIMAX iPatch System Panel Manager Installation Instructions** (860442573).

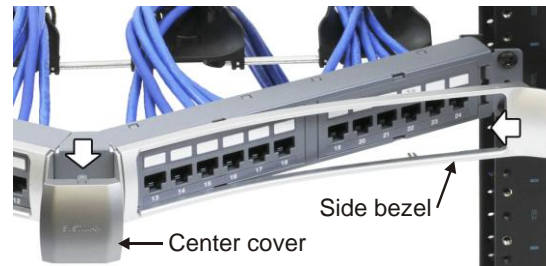
Step 2 – Install iPatch Panel Manager

An **iPatch** panel manager must be installed on each rack where you plan to install or upgrade panels. The **iPatch** manager supervises the **iPatch** panels in the rack and communicates with the **iPatch** system. For upgrade applications, using a panel manager is recommended.

Note: It is recommended to mount the panel manager in the 34th 1U slot up from the bottom of the rack so that the top of the unit is about 65 inches (1.6m) above the floor. For instructions on installing and configuring the panel manager, see **SYSTIMAX iPatch System Panel Manager Installation Instructions** (860442573).

Step 3 – Install iPatch Upgrade Module on Panels

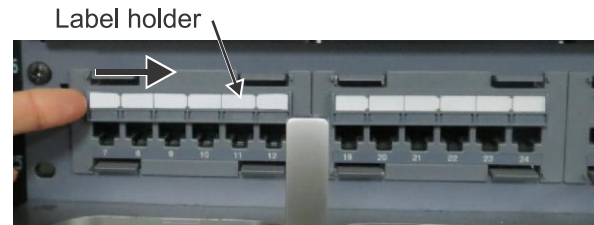
1. Before upgrading panels in the rack, disconnect power from the panel manager for the rack.
2. Remove the front bezel from the panel.
 - **For flat panels**, grasp the front bezel along the top of the panel and pull it towards you until the three tabs along the top release. Set the cover aside.
 - **For angled panels**, grasp the top and bottom of the center cover and pull straight out as shown. Grasp the outside edge of a side bezel and pull toward the center until it releases. Remove the other side bezel. Set the three pieces aside.



Important: The upgrade process can be completed without removing any existing patch cord connections in the panel. Avoid disturbing the patch cords during the upgrade.

3. Remove the label holder above the ports by sliding it to the right until the tabs release then lifting it off.

Note: The label holders will not be reused with the installation of the upgrade kit.



4. Use a small, flat blade screwdriver to pry up the edge of the adhesive port number label below the ports on each module. Gently peel off the label without bending it.

5. Reapply the port number label above the ports on each module where you removed the port label holder.

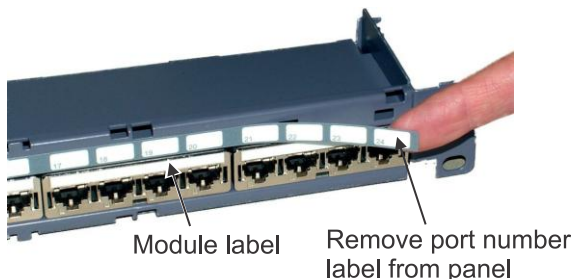
Important: Do not cover the three slots above the ports. These slots are used for attaching the **iPatch** upgrade module to the panel.



6. Apply an adhesive gray label below the ports on each module where you removed the port number label.

7. The **QUATTRO** panel requires removal of white module labels and a grey port number label. Use a small flat blade screwdriver to pry up and peel off the module labels.

8. To remove the long grey port number label, use a finger to lift up on numbered strip and peel it off. Discard this label.

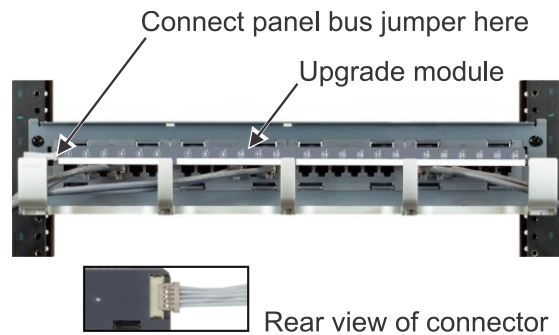


9. Locate the panel bus jumper provided with the **iPatch** upgrade module. Feed the end of the jumper with the small connector from the inside of the panel through the rectangular opening in the left front of the panel as shown.

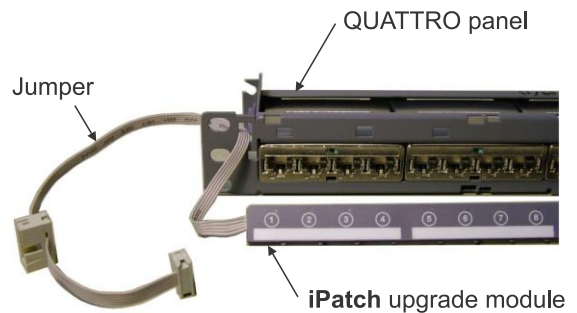
Note: The connector is keyed. Orient the panel bus jumper with the metal conductors on the small connector facing the rear of the module.



10. Align the **iPatch** upgrade module with the front of the panel. Then, connect the panel bus jumper to the back of the module as shown.



11. The upgrade module with attached panel bus jumper is shown before installing on a **QUATTRO** panel.



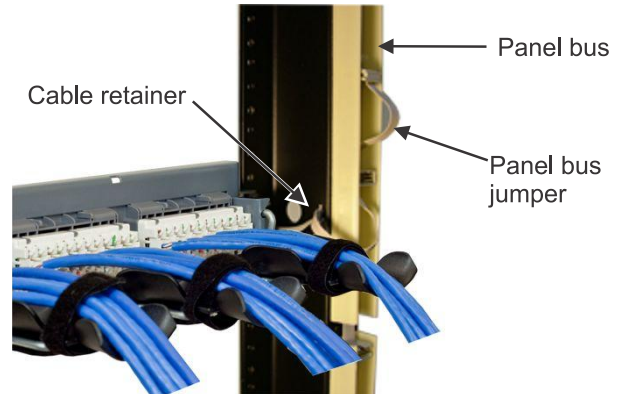
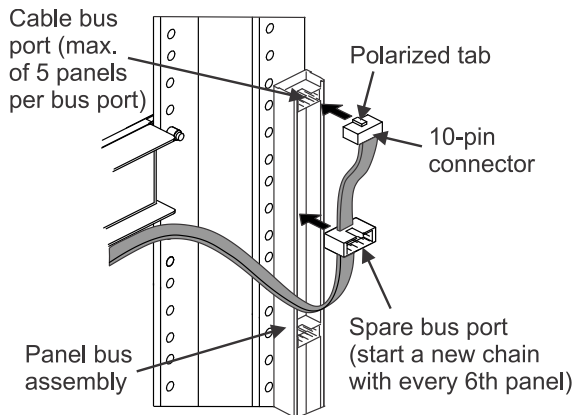
12. Place the upgrade module on the panel so the hooks on the back of the overlay fit into the front of the panel. While feeding any excess jumper cable through the slot, slide the module to the left until the hooks engage with the panel and the buttons align with the ports as shown.

Note: When upgrading a 48-port panel, install an **iPatch** upgrade module with ports 1 through 24 on the top of the panel and an upgrade module with ports 25 through 48 on the bottom of the panel.

Note: To remove the **iPatch** upgrade module, reverse these instructions and slide the overlay to the right to remove it.



Step 4 – Connect Panels to Panel Bus



1. Unfold panel bus jumper and insert female 10-pin connector into the nearest cable bus port on panel bus assembly.
2. Install spare port built into jumper cordage into panel bus frame by turning it at an angle, inserting into frame, and turning it back perpendicular to frame.
3. Position cable retainer on the panel bus jumper and remove the adhesive backing from the cable retainer. Press the cable retainer against the rack where indicated.

Note: The connector is keyed. The polarized tab on the jumper connector fits into the opening in the header connector on the panel bus.

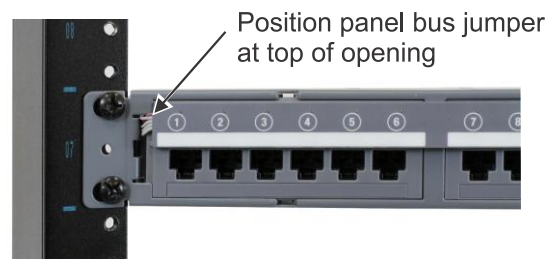
Important: For 48-port panels, connect both panel bus jumpers.

4. If upgrading a **PATCHMAX** panel, reinstall the front bezel that was temporarily removed in Step 3. Position the front bezel at an angle as shown and insert the two bottom retention tabs into the slots on the patch cord management. Pivot the top of the bezel towards the panel until the three tabs on the top of the bezel snap into the panel.
5. If upgrading an Evolve flat panel, reinstall the front bezel that was temporarily removed in Step 3. Align the bezel with the front of the panel and press until the top and bottom tabs snap into the panel.

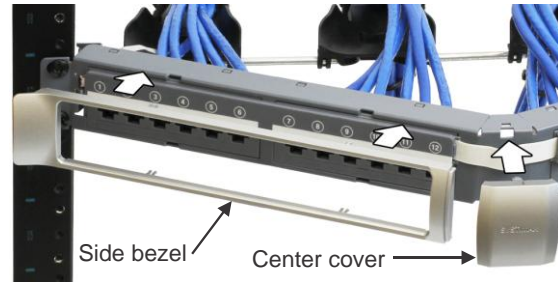


Note: If upgrading an Evolve angled panel, perform the following steps to reinstall the front cover and bezels that were temporarily removed.

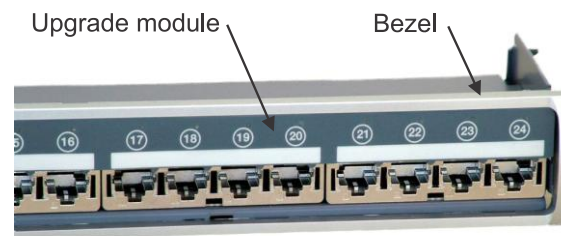
6. Position the panel bus jumper at the top of the opening in the left front of the panels as shown, align a bezel with the front left of the panel, and press until the top and bottom tabs snap into place as shown on next page.
7. Reinstall the other bezel on the front right of the panel.



- Align the cover with the center front of the panel and press until the top and bottom tabs snap into place.



- The **InstaPatch QUATTRO** panel with **iPatch** upgrade module installed and bezel reinstalled is shown here.



Step 5 – Program Order of Panels

To complete the installation, restore power to the panel manager for the rack and program the order of the panels. For instructions, see the **SYSTIMAX iPatch System Panel Manager Installation Instructions** (860442573).