

4P-4L-B2



4-port sector antenna, 4x 694–960 MHz, 65° HPBW

- All Internal RET actuators are connected in “Cascaded SRET” configuration
- Tilt indicator is available

General Specifications

Antenna Type	Sector
Band	Single band
Color	Light Gray (RAL 7035)
Grounding Type	RF connector inner conductor and body grounded to reflector and mounting bracket
Performance Note	Outdoor usage
Radome Material	Fiberglass, UV resistant
Radiator Material	Aluminum
Reflector Material	Aluminum
RF Connector Interface	4.3-10 Female
RF Connector Location	Bottom
RF Connector Quantity, low band	4
RF Connector Quantity, total	4

Remote Electrical Tilt (RET) Information

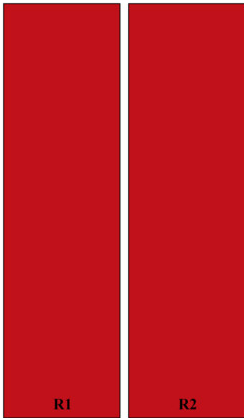
RET Hardware	CommRET v2
RET Interface	2x 8 pin connector as per IEC 60130-9 Daisy chain in: Male / Daisy chain out: Female Pin3: RS485A(AISG_B), Pin5: RS485B(AISG_A), Pin6: DC 10~30V, Pin7: DC_Return
RET Interface, quantity	1 female 1 male
Input Voltage	10–30 Vdc
Internal RET	Low band (2)
Power Consumption, active state, maximum	10 W
Power Consumption, idle state, maximum	2 W
Protocol	3GPP/AISG 2.0

Dimensions

4P-4L-B2

Width	467 mm 18.386 in
Depth	167 mm 6.575 in
Length	1997 mm 78.622 in
Net Weight, antenna only	24.5 kg 54.013 lb

Array Layout



Array ID	Frequency (MHz)	RF Connector	RET (SRET)	AISG RET UID
R1	694-960	1 - 2	1	CPxxxxxxxxxxxxR1
R2	694-960	3 - 4	2	CPxxxxxxxxxxxxR2

(Sizes of colored boxes are not true depictions of array sizes)

Port Configuration



Electrical Specifications

4P-4L-B2

Impedance	50 ohm
Operating Frequency Band	694 – 960 MHz
Polarization	±45°
Total Input Power, maximum	800 W

Electrical Specifications

Frequency Band, MHz	694–790	790–890	890–960
Gain, dBi	15.4	15.5	16.1
Beamwidth, Horizontal, degrees	66	64	66
Beamwidth, Vertical, degrees	11.2	9.7	9
Beam Tilt, degrees	0–10	0–10	0–10
USLS (First Lobe), dB	17	17	18
Front-to-Back Ratio, Copolarization 180° ± 30°, dB	27	28	27
Isolation, Cross Polarization, dB	26	26	26
Isolation, Inter-band, dB	26	26	26
VSWR Return loss, dB	1.5 14.0	1.5 14.0	1.5 14.0
PIM, 3rd Order, 2 x 20 W, dBc	-150	-150	-150
Input Power per Port, maximum, watts	300	300	300

Electrical Specifications, BASTA

Frequency Band, MHz	694–790	790–890	890–960
Gain by all Beam Tilts, average, dBi	15	15.3	15.8
Gain by all Beam Tilts Tolerance, dB	±0.7	±0.3	±0.2
Beamwidth, Horizontal Tolerance, degrees	±3.6	±4.2	±4.4
Beamwidth, Vertical Tolerance, degrees	±0.9	±0.5	±0.5
Front-to-Back Total Power at 180° ± 30°, dB	22	23	23
CPR at Boresight, dB	25	25	25
CPR at Sector, dB	12	10	11

Mechanical Specifications

Wind Loading @ Velocity, frontal	820.0 N @ 150 km/h (184.3 lbf @ 150 km/h)
Wind Loading @ Velocity, lateral	308.0 N @ 150 km/h (69.2 lbf @ 150 km/h)
Wind Speed, maximum	241 km/h (150 mph)

Packaging and Weights

4P-4L-B2

Width, packed	562 mm 22.126 in
Depth, packed	287 mm 11.299 in
Length, packed	2197 mm 86.496 in
Weight, gross	36 kg 79.366 lb

Regulatory Compliance/Certifications

Agency

CHINA-ROHS
ISO 9001:2015
REACH-SVHC
ROHS
UK-ROHS

Classification

Below maximum concentration value
Designed, manufactured and/or distributed under this quality management system
Compliant as per SVHC revision on www.commscope.com/ProductCompliance
Compliant
Compliant



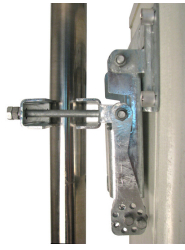
Included Products

- | | | |
|---------------|---|--|
| BSAMNT-B95-03 | - | Wide Profile Antenna Downtilt Mounting Kit for 2.4 - 4.5 in (60 - 115 mm) OD round members. Kit contains one scissor top bracket set and one bottom bracket set. |
|---------------|---|--|

* Footnotes

Performance Note Severe environmental conditions may degrade optimum performance

BSAMNT-B95-03



Wide Profile Antenna Downtilt Mounting Kit for 2.4 - 4.5 in (60 - 115 mm) OD round members. Kit contains one scissor top bracket set and one bottom bracket set.

Product Classification

Product Type Downtilt mounting kit

General Specifications

Application Outdoor

Color Silver

Dimensions

Compatible Diameter, maximum 114.3 mm | 4.5 in

Compatible Diameter, minimum 61 mm | 2.402 in

Weight, net 4.5 kg | 9.921 lb

Material Specifications

Material Type Galvanized steel

Packaging and Weights

Included Brackets | Hardware

Packaging quantity 2

Regulatory Compliance/Certifications

Agency

CE
ISO 9001:2015

Classification

Compliant with the relevant CE product directives
Designed, manufactured and/or distributed under this quality management system

