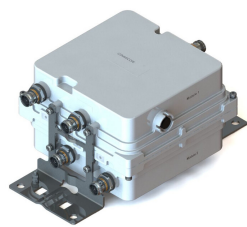


E14F06P24



Twin Diplexer, 700/800 MHz, dc by pass on all ports

- Designed for network Modernization, introduction of LTE700 on existing site
- New 4.3-10 connectors for improved PIM performance and size reduction
- Twin configuration
- DC/AISG passing on all ports

OBSOLETE

This product was discontinued on: December 30, 2024

Product Classification

Product Type Diplexer

General Specifications

Color Gray

Modularity 2-Twin

Mounting Pole | Wall

Mounting Pipe Hardware Band clamps (2)

RF Connector Interface 4.3-10 Female

Dimensions

Height 214 mm | 8.425 in

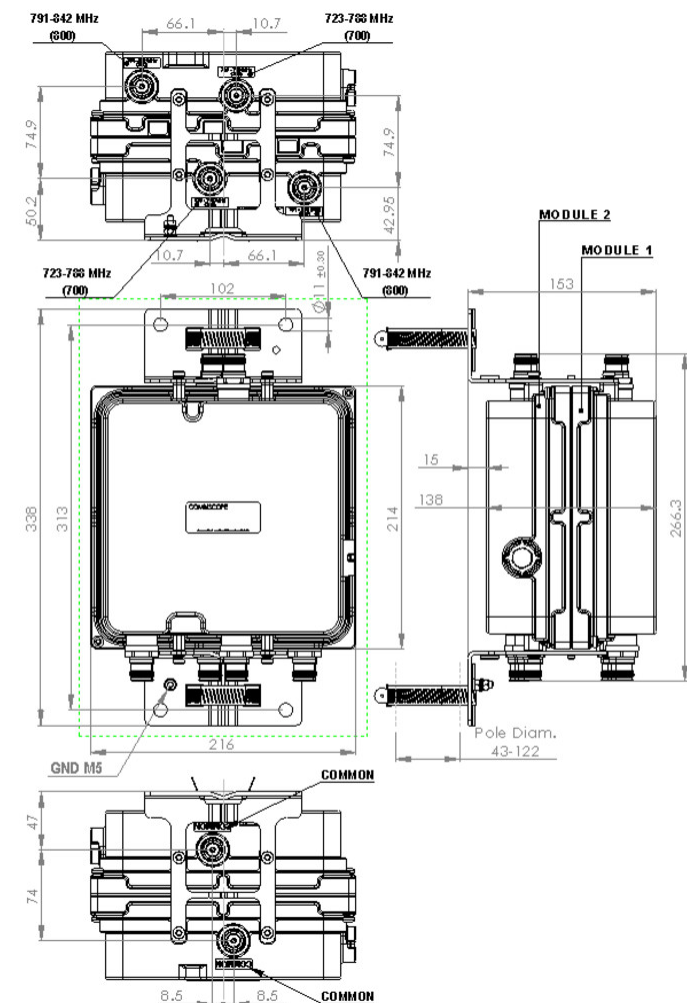
Width 216 mm | 8.504 in

Depth 138 mm | 5.433 in

Mounting Pipe Diameter Range 42.6–122 mm

Outline Drawing

E14F06P24



Electrical Specifications

Impedance	50 ohm
Lightning Surge Current	10 kA
Lightning Surge Current Waveform	8/20 waveform

Electrical Specifications, dc Power/Alarm

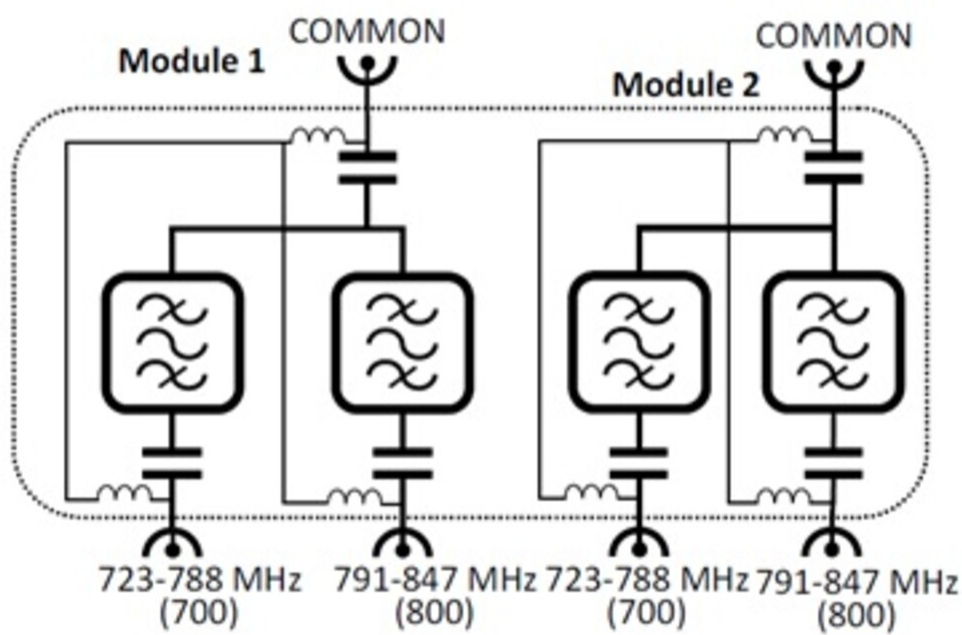
dc/AISG Pass-through Method	Factory set
dc/AISG Pass-through Path	Branch 1 Branch 2
dc/AISG Pass-through, combiner	Branch 1 Branch 2
dc/AISG Pass-through, demultiplexer	Branch 1 Branch 2

Electrical Specifications, Band Pass

E14F06P24

Frequency Range, MHz	723–788	791–847
Insertion Loss, typical, dB	0.35	0.35
Return Loss, typical, dB	20	20
Isolation, minimum, dB	40	40
Input Power, RMS, maximum, W	200	200
Input Power, PEP, maximum, W	800	800
3rd Order PIM, typical, dBc	-162	-162
3rd Order PIM Test Method	2 x 20 W CW tones	2 x 20 W CW tones

Block Diagram



Environmental Specifications

Operating Temperature	-40 °C to +65 °C (-40 °F to +149 °F)
Corrosion Test Method	IEC 60068-2-11, 30 days
Ingress Protection Test Method	IEC 60529:2001, IP67

Packaging and Weights

Included	Mounting hardware
Volume	6.4 L
Weight, net	5.5 kg 12.125 lb