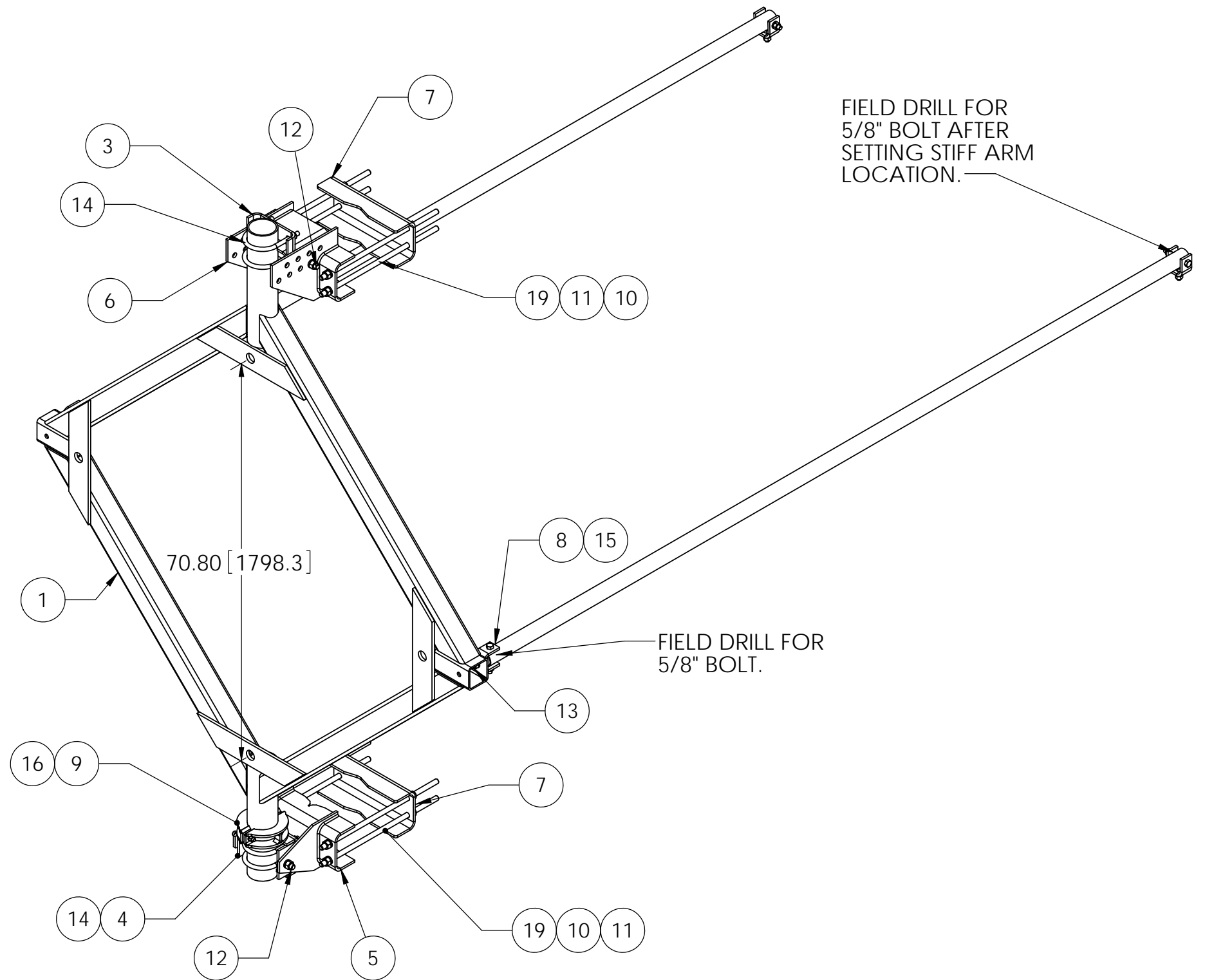


| ITEM | PART NO. | DESCRIPTION | QTY. | WEIGHT |
|------|------------|------------------------------------|------|------------|
| 1 | DMHD12.01 | Dish Mount Weldment | 1 | 307.90 LBS |
| 2 | DMHD46H | HARDWARE KIT (ITEMS 3-17) | 1 | |
| 3 | DMHD46.02 | TOP PIPE MOUNT | 1 | 17.47 LBS |
| 4 | DMHD46.03 | BOTTOM PIPE MOUNT | 1 | 11.88 LBS |
| 5 | DMHD46.04 | BOTTOM SADDLE | 1 | 32.92 LBS |
| 6 | DMHD46.05 | TOP SADDLE | 1 | 40.34 LBS |
| 7 | DMHD46.21 | CLAMP PLATE | 2 | 21.99 LBS |
| 8 | DMHD46.22 | STIFF ARM MOUNT | 5 | 1.67 LBS |
| 9 | DMHD46.26 | Half Clamp 4-1/2" Pipe | 2 | 3.40 LBS |
| 10 | GN-06 | 3/4" GALV HEX NUT | 16 | 0.04 LBS |
| 11 | GWL-06 | 3/4" GALV LOCK WASHER | 16 | 0.01 LBS |
| 12 | GB-06225 | 3/4" X 2-1/4" GALV BOLT KIT | 4 | 0.66 LBS |
| 13 | GB05165 | 5/8" X 1-3/4" GALV BOLT KIT | 4 | 0.66 LBS |
| 14 | GUB-5456 | 5/8" X 4-5/8" X 6-1/2" GALV U-BOLT | 4 | 1.54 LBS |
| 15 | GB-05445 | 5/8" X 4-1/2" GALV BOLT KIT | 4 | 0.66 LBS |
| 16 | GB-04205 | 1/2" X 2" GALV BOLT KIT | 2 | 0.66 LBS |
| 17 | MT-537-150 | 2-3/8" OD X 12'-6" PIPE | 2 | 43.56 LBS |
| 19 | MT-384-24 | 3/4" X 24" GALV THREADED ROD | 8 | 3.01 LBS |

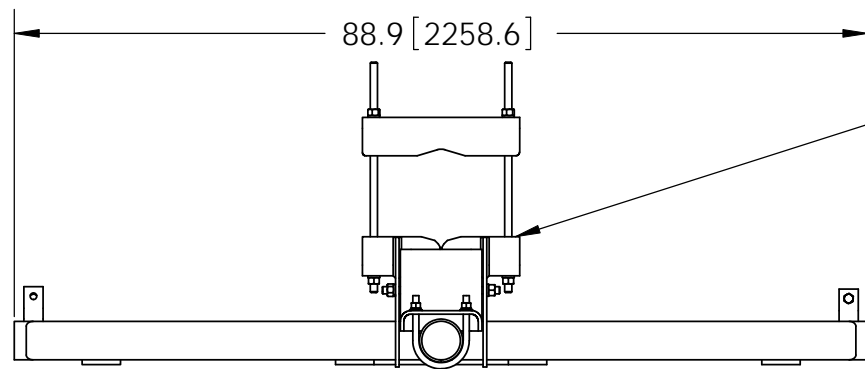
| REVISIONS | | | | |
|-----------|------|-------------------------------------|-----|----------|
| REV. | ZONE | DESCRIPTION | BY | DATE |
| A | | INITIAL RELEASE | MSM | 06/11/08 |
| B | | UPDATE ITEMS 3,4,&7, CHG ALL-THREAD | MSM | 01/21/09 |



NOTES:

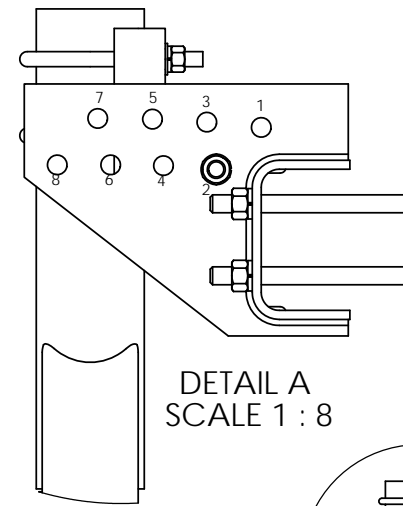
1. ALL METRIC DIMENSIONS ARE IN BRACKETS.
2. ITEM 9 USED FOR ADJUSTMENT OF MOUNT.
3. OPTIONAL EQUIPMENT SHOWN ON PAGE 4.
4. UP TO 5% ADDITIONAL HARDWARE INCLUDED.

| | | | |
|---|-------------------|----------------------|---|
| <small>These drawings and specifications are the proprietary property of ANDREW CORPORATION and may be used only for the specific purpose authorized in writing by Andrew Corporation.</small> ALL DIMENSIONS ARE IN INCHES U.O.S. TOLERANCES UNLESS OTHERWISE SPECIFIED: .X = ± .12 ANGLES ±2° .XX = ± .06 FRACTIONS ±1/32 .XXX = ± .03 REMOVE BURRS AND BREAK EDGES .005 DO NOT SCALE THIS PRINT | DRAWN BY: MSM | SHEET: 1 of 7 | PART NUMBER: DMHD-12 |
| | CHECKED BY: TP | SCALE: NTS | DESCRIPTION: HEAVY DUTY DISH MOUNT 12' |
| | DATE: 06/11/08 | MATERIAL: A36 | DRAWING TYPE: ASSEMBLY DRAWING |
| | REVISION: B | FINISH: GALV A123 | WEIGHT: 597.69 LBS |



SADDLE RANGE
UP TO 12" OD/
12" 60° ANGLE LEG/
9" 90° ANGLE LEG

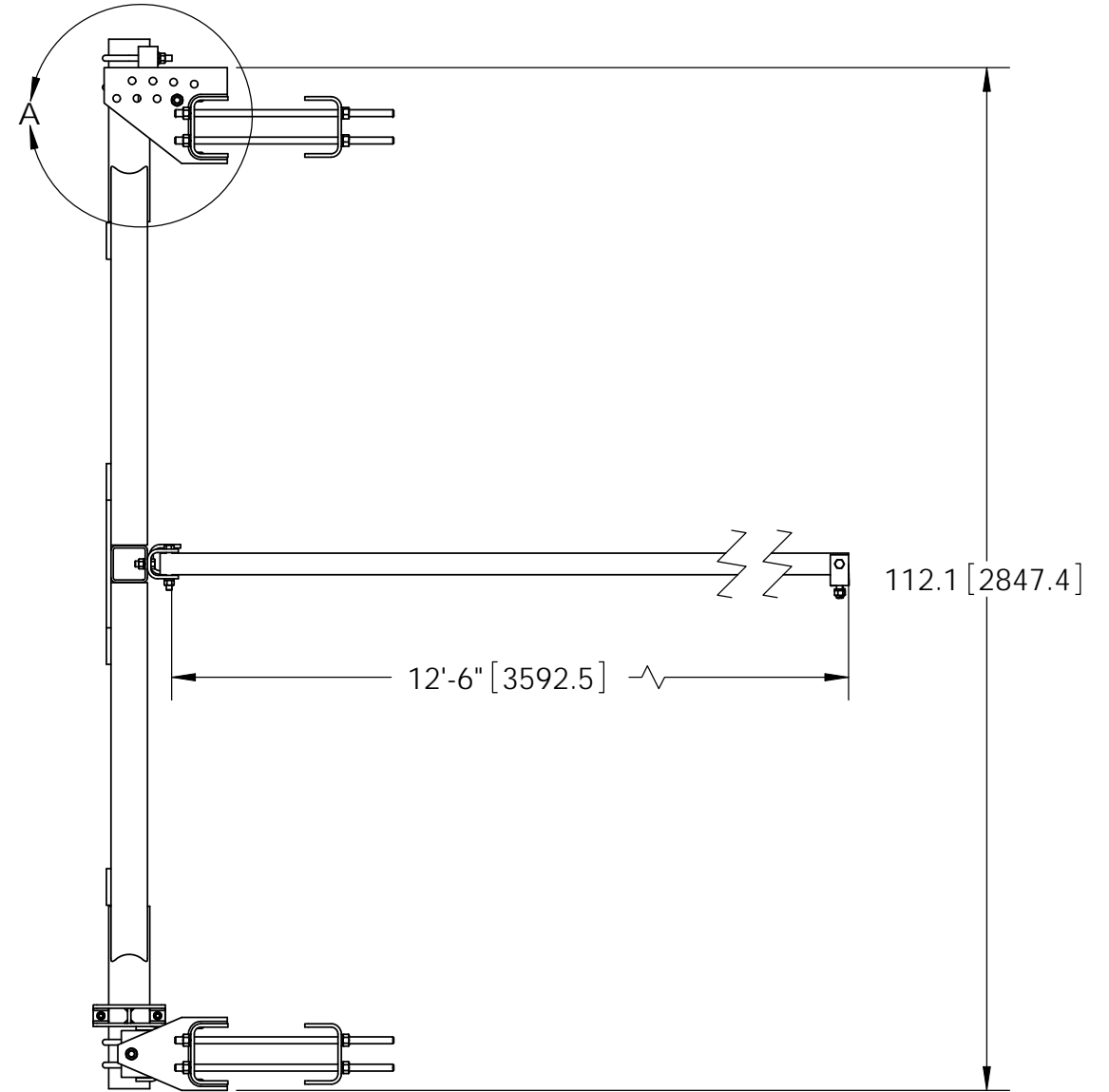
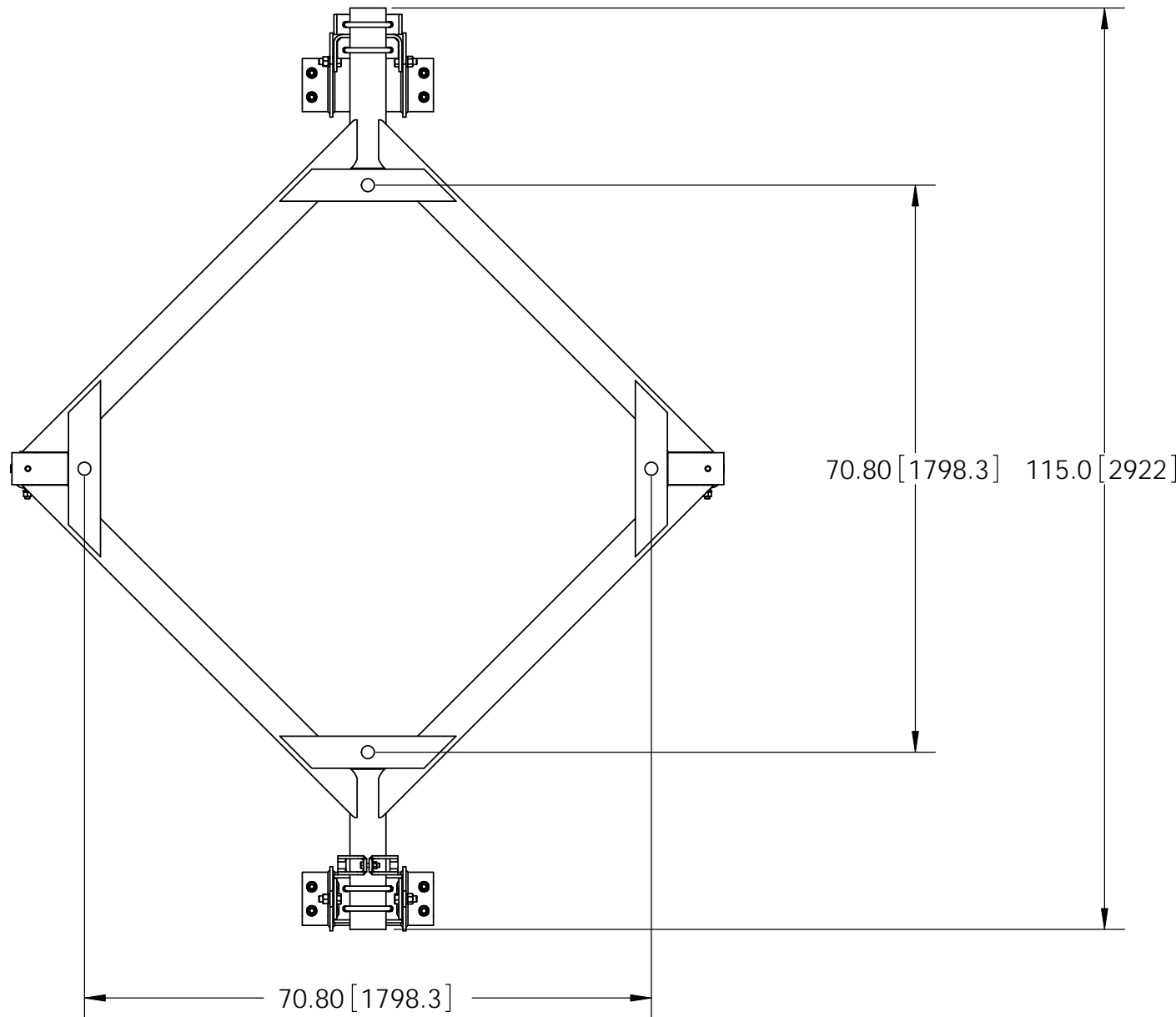
SEE CHART



DETAIL A
SCALE 1 : 8

DEGREE OF TILT AT 112.6" MOUNTING
BRACKET SEPERATION

| HOLE LOCATION | DEGREE OF TILT |
|---------------|----------------|
| 1 | 1° |
| 2 | 0° |
| 3 | 3° |
| 4 | 2° |
| 5 | 5° |
| 6 | 4° |
| 7 | 7° |
| 8 | 6° |




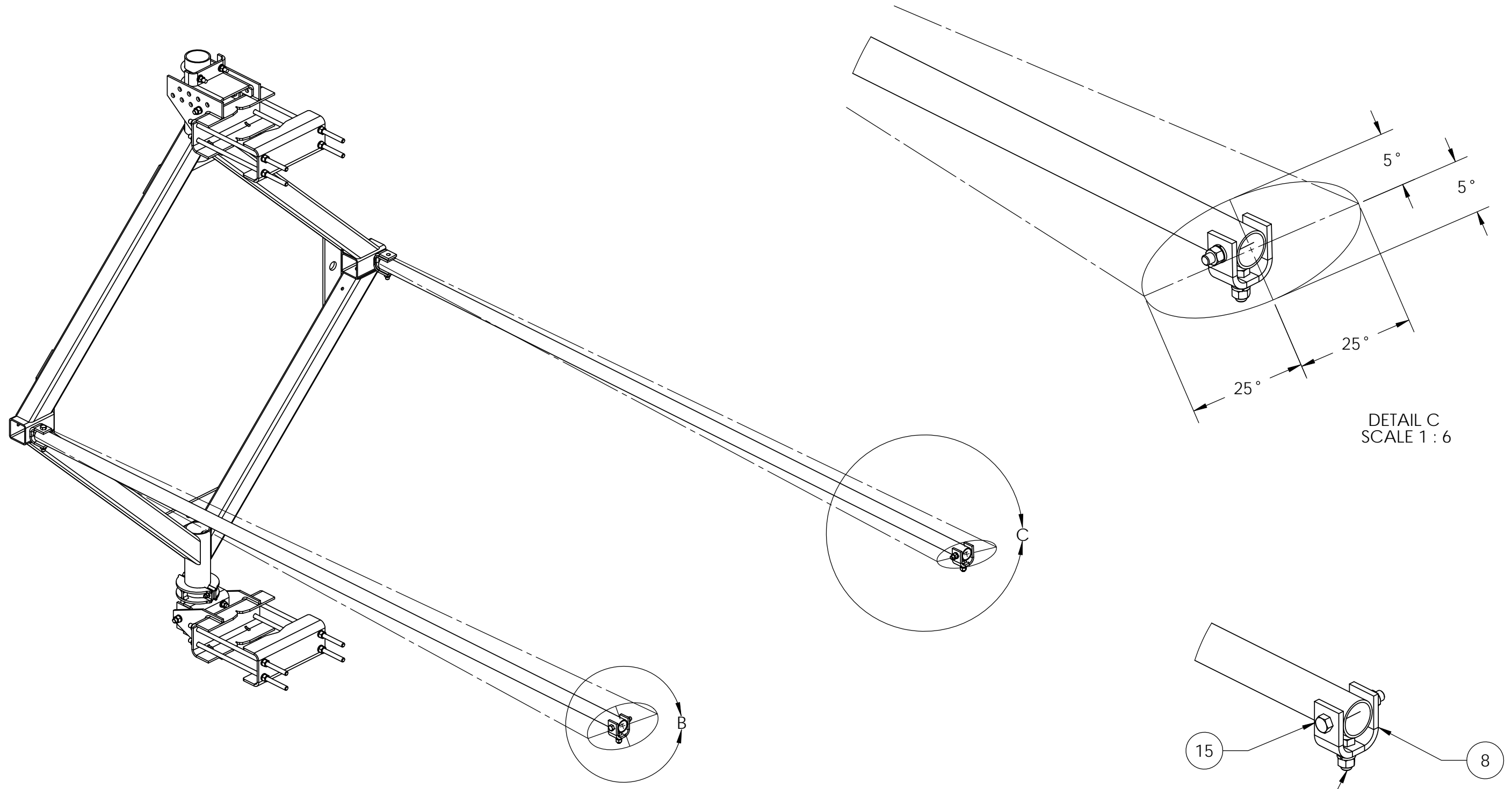
These drawings and specifications are the proprietary property of ANDREW CORPORATION and may be used only for the specific purpose authorized in writing by Andrew Corporation.

ALL DIMENSIONS ARE IN INCHES U.O.S.
TOLERANCES UNLESS OTHERWISE SPECIFIED:
.X = ± .12 ANGLES ±2°
.XX = ± .06 FRACTIONS ±1/32
.XXX = ± .03

REMOVE BURRS AND BREAK EDGES .005

DO NOT SCALE THIS PRINT


| | | |
|-----------------------|-----------------------|--|
| DRAWN BY: MSM | SHEET: 2 of 7 | PART NUMBER: DMHD-12 |
| CHECKED BY: TP | SCALE: NTS | DESCRIPTION: HEAVY DUTY DISH MOUNT 12' |
| DATE: 06/11/08 | MATERIAL: A36 | DRAWING TYPE: ASSEMBLY DRAWING |
| REVISION: B | FINISH: GALV A123 |  WESTCHESTER, IL. 60154 U.S.A. |
| | WEIGHT: 597.69 LBS | |



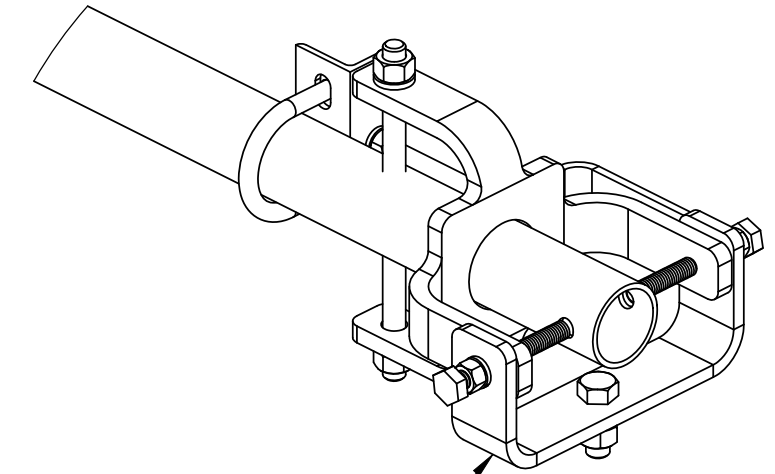
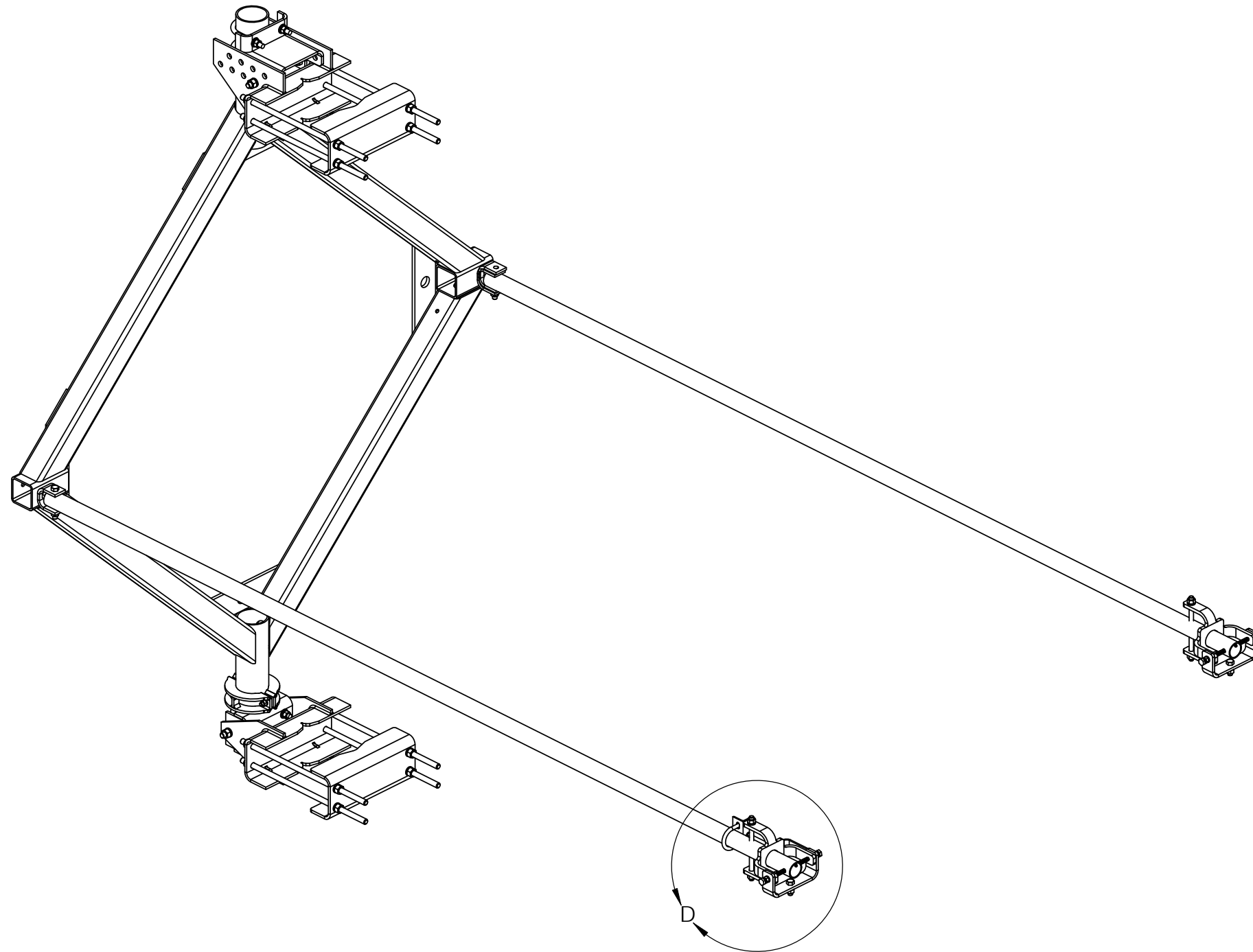
DETAIL C
SCALE 1 : 6

DETAIL B
SCALE 1 : 6

NOTE: Struts should be positioned as close to zero degrees (parallel to the horizon) in elevation as possible when installed. Azimuth positioning should be parallel to the path of the antenna. If this cannot be done, struts may be positioned within the angular limits shown in the illustrations. Typical for both struts.


| | | | |
|---|-----------------------|----------------------|--|
| <small>These drawings and specifications are the proprietary property of ANDREW CORPORATION and may be used only for the specific purpose authorized in writing by Andrew Corporation.</small> ALL DIMENSIONS ARE IN INCHES U.O.S. TOLERANCES UNLESS OTHERWISE SPECIFIED: .X = ± .12 ANGLES ±2° .XX = ± .06 FRACTIONS ±1/32 .XXX = ± .03 REMOVE BURRS AND BREAK EDGES .005 DO NOT SCALE THIS PRINT | DRAWN BY: MSM | SHEET: 3 of 7 | PART NUMBER: DMHD-12 |
| | CHECKED BY: TP | SCALE: NTS | DESCRIPTION: HEAVY DUTY DISH MOUNT 12' |
| | DATE: 06/11/08 | MATERIAL: A36 | DRAWING TYPE: ASSEMBLY DRAWING |
| | REVISION: B | FINISH: GALV A123 |  WESTCHESTER, IL. 60154 U.S.A. |
| | WEIGHT: 597.69 LBS | | |

OPTIONAL EQUIPMENT

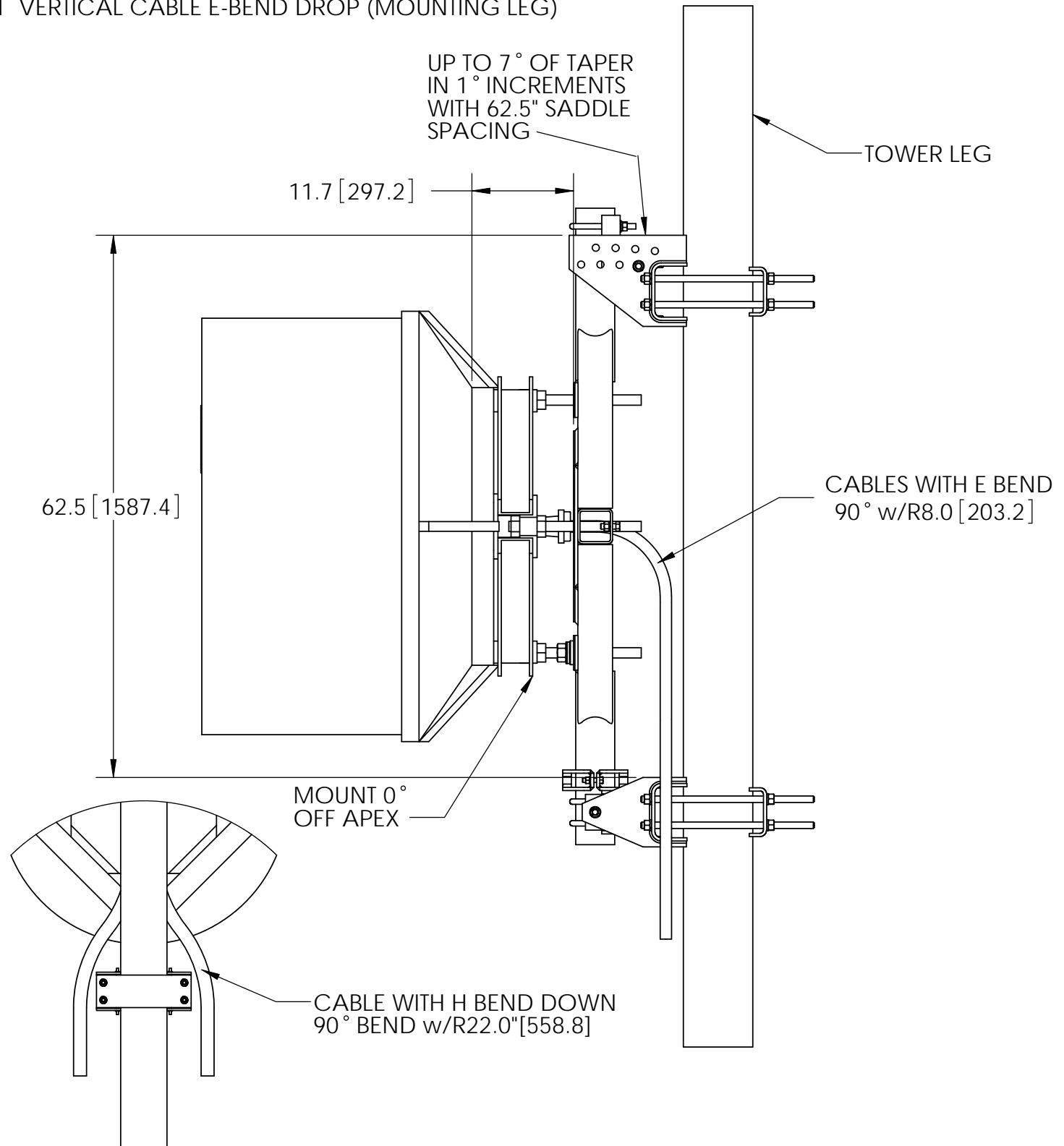


OPTIONAL STIFF ARM
ADJUSTMENT CLAMP
MTC9865

DETAIL D
SCALE 1 : 5

| | | | |
|--|-------------------------------|---|---|
| <p>These drawings and specifications are the proprietary property of ANDREW CORPORATION and may be used only for the specific purpose authorized in writing by Andrew Corporation.</p> <p>ALL DIMENSIONS ARE IN INCHES U.O.S. TOLERANCES UNLESS OTHERWISE SPECIFIED:</p> <p>.X = ± .12 ANGLES ±2° .XX = ± .06 FRACTIONS ±1/32 .XXX = ± .03</p> <p>REMOVE BURRS AND BREAK EDGES .005</p> <p>DO NOT SCALE THIS PRINT</p> | <p>DRAWN BY: MSM</p> | <p>SHEET: 4 of 7</p> | <p>PART NUMBER: DMHD-12</p> |
| | <p>CHECKED BY: TP</p> | <p>SCALE: NTS</p> | <p>DESCRIPTION: HEAVY DUTY DISH MOUNT 12'</p> |
| | <p>DATE: 06/11/08</p> | <p>MATERIAL: A36</p> | <p>DRAWING TYPE: ASSEMBLY DRAWING</p> |
| | <p>REVISION: B</p> | <p>FINISH: GALV A123</p> | <p>WESTCHESTER, IL. 60154 U.S.A.</p> |
| | <p>WEIGHT: 597.69 LBS</p> |  | |

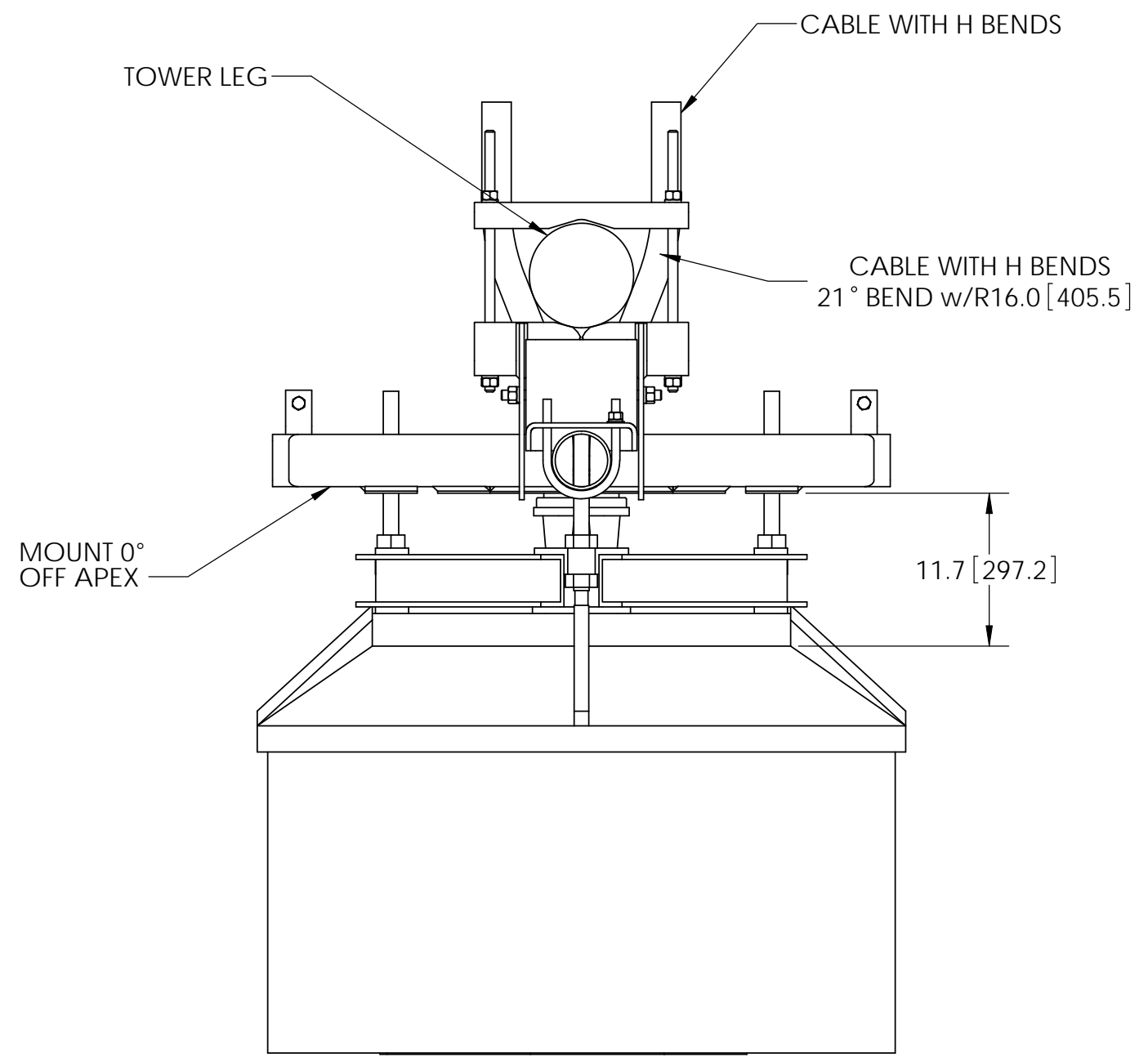
#1 VERTICAL CABLE E-BEND DROP (MOUNTING LEG)




- NOTES:
1. ALL METRIC DIMENSIONS ARE IN BRACKETS.
 2. IN PRACTICAL APPLICATIONS THE CABLE BENDS WILL PERFORM DIFFERENTLY DEPENDING ON LOADS AND ENVIRONMENT.
 3. ALL VIEWS SHOWN WITH S-SERIES SHIELDED ANTENNA(4FT).
 4. ALL VIEWS USE EW52 CABLE WITH STANDARD CABLE TOLERANCES.

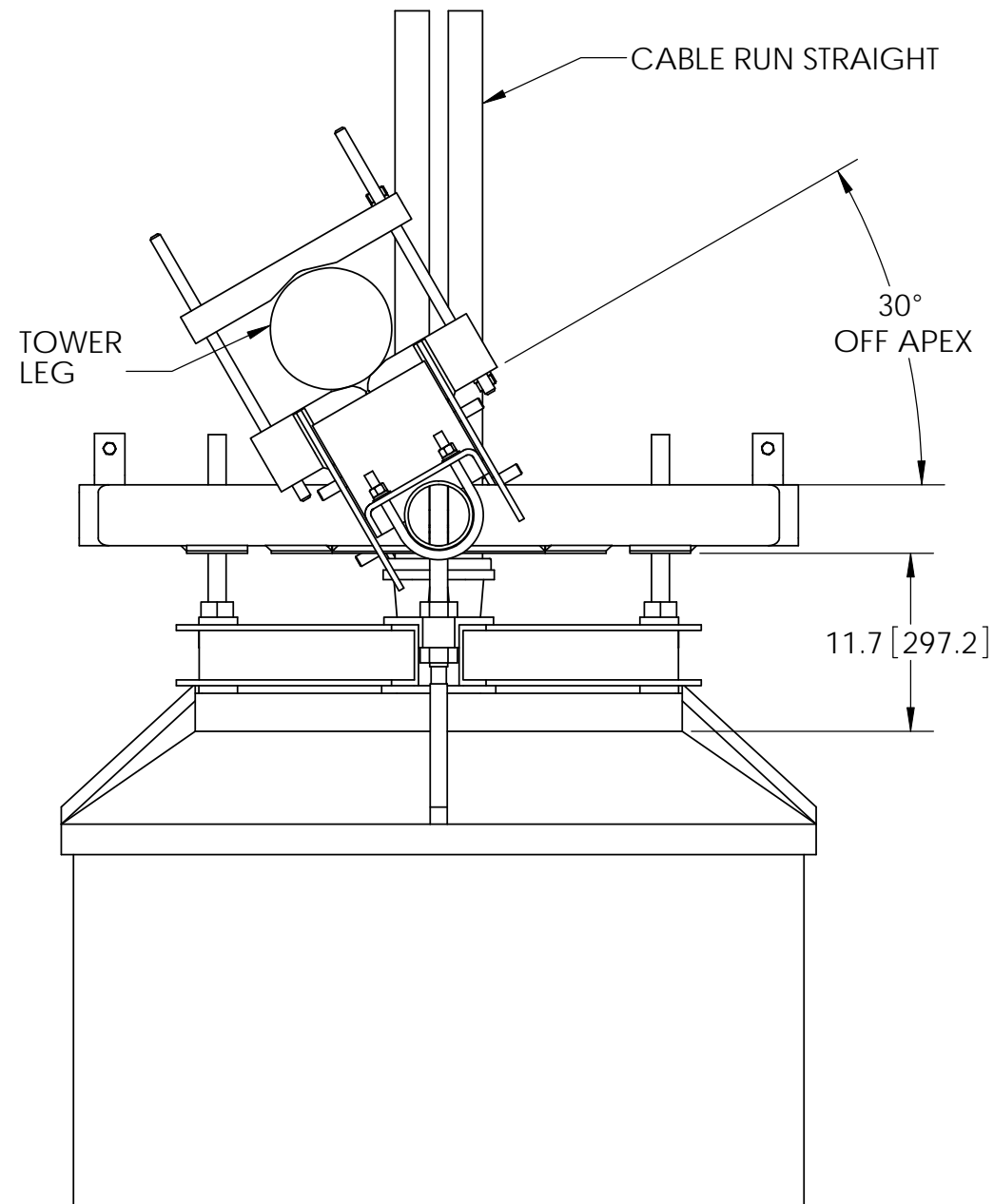
| REVISIONS | | | | |
|-----------|------|-----------------|-----|----------|
| REV. | ZONE | DESCRIPTION | BY | DATE |
| A | | INITIAL RELEASE | MSM | 10/03/08 |

#2 DIRECT APEX MOUNT WITH HORIZONTAL H-BEND TO BACK LEGS

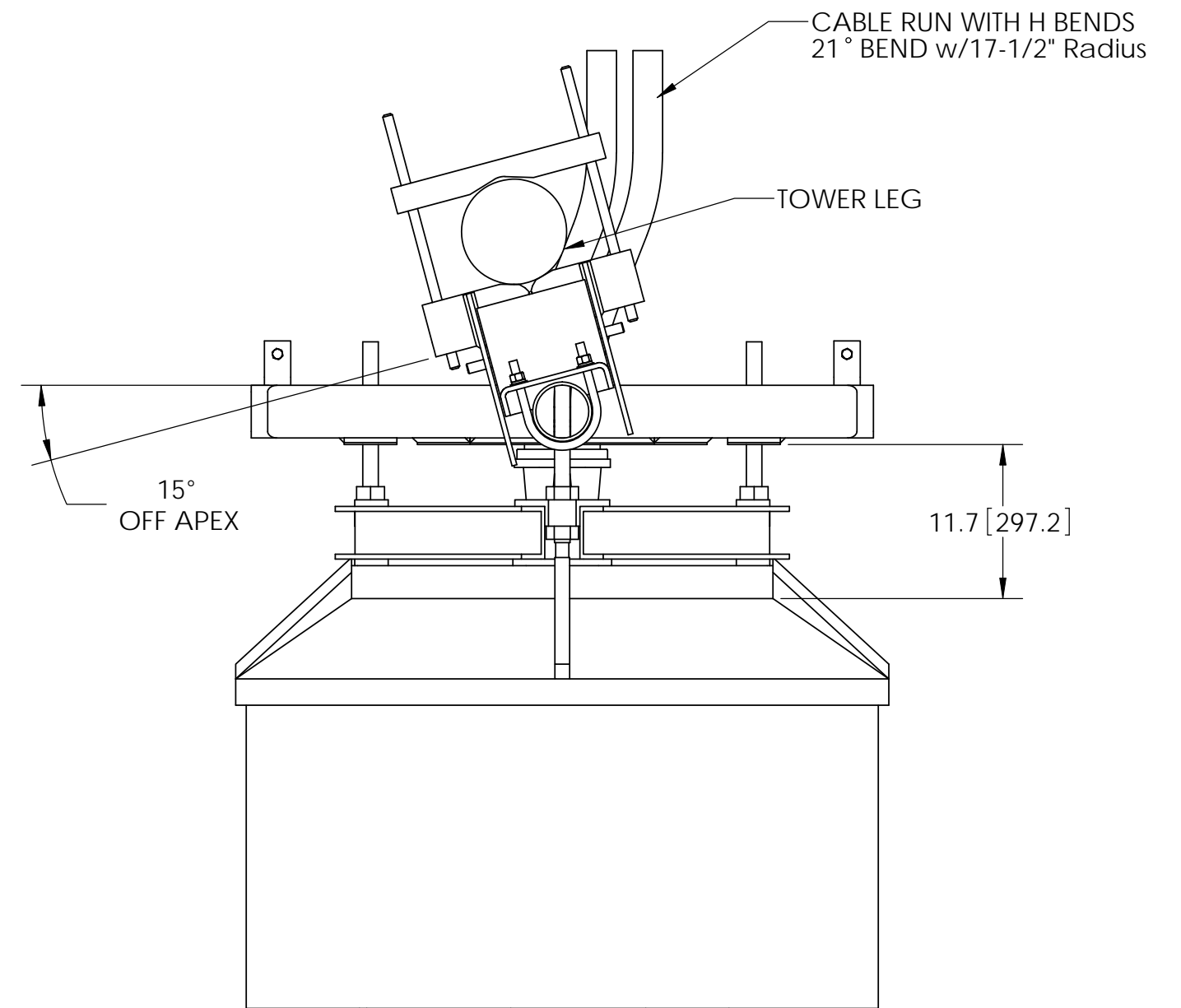



| | | | |
|--|-------------------|-----------------------|--|
| <p>These drawings and specifications are the proprietary property of ANDREW CORPORATION and may be used only for the specific purpose authorized in writing by Andrew Corporation.</p> <p>ALL DIMENSIONS ARE IN INCHES U.O.S. TOLERANCES UNLESS OTHERWISE SPECIFIED:</p> <p>.X = ± .12 ANGLES ±2° .XX = ± .06 FRACTIONS ±1/32 .XXX = ± .03</p> <p>REMOVE BURRS AND BREAK EDGES .005</p> <p>DO NOT SCALE THIS PRINT</p> | DRAWN BY: MSM | SHEET: 5 of 7 | PART NUMBER: DMHD46 WITH DISH |
| | CHECKED BY: TP | SCALE: NTS | DESCRIPTION: HEAVY DUTY DISH MOUNT |
| | DATE: 10/03/08 | MATERIAL: A36, A53 | DRAWING TYPE: ASSEMBLY DRAWING |
| | REVISION: A | FINISH: GALV A123 |  WESTCHESTER, IL. 60154 U.S.A. |

#3 HORIZONTAL CABLE RUN WITH NO BENDS (30° OFF APEX)

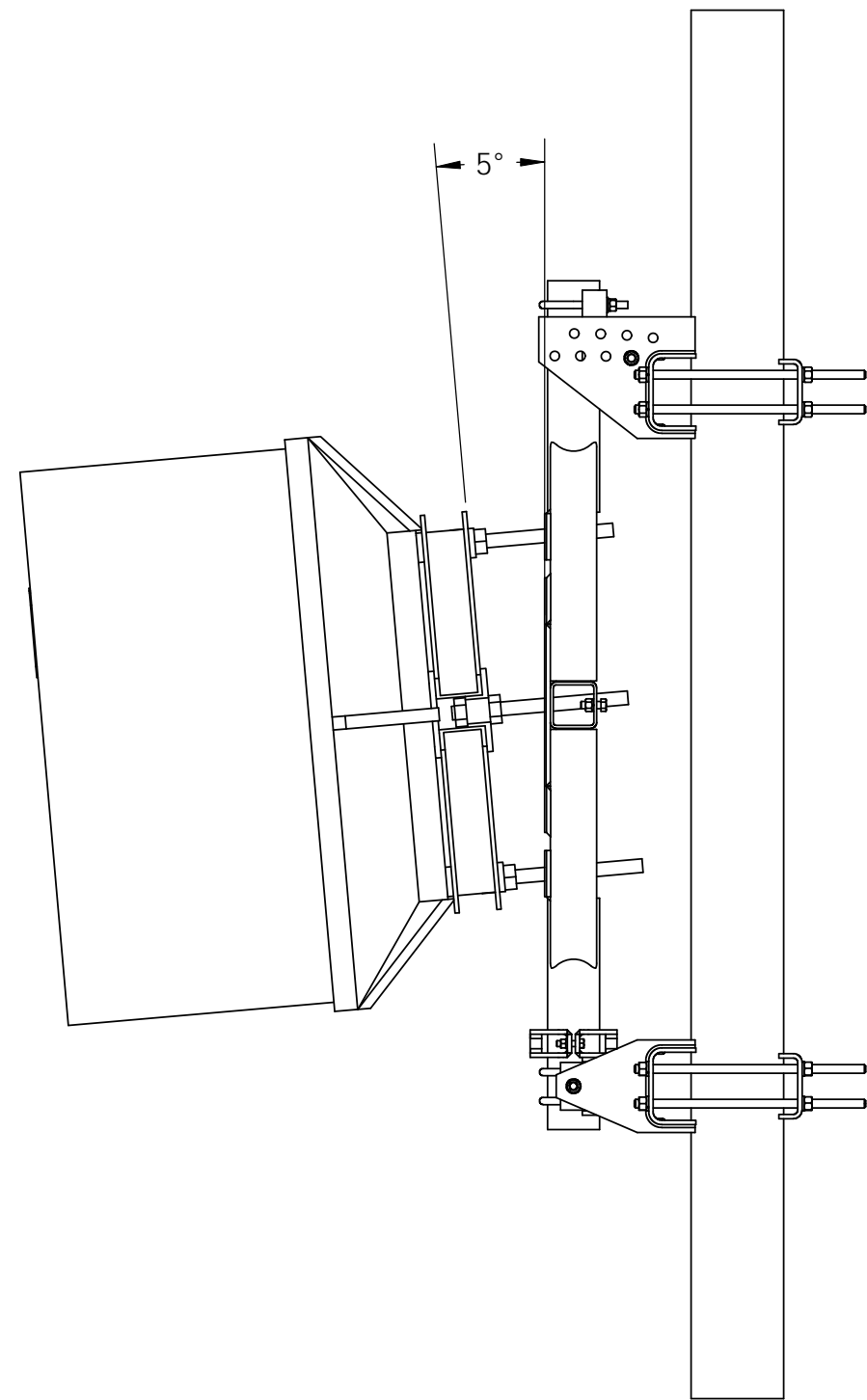


#4 HORIZONTAL CABLE RUN WITH BENDS (15° OFF APEX)

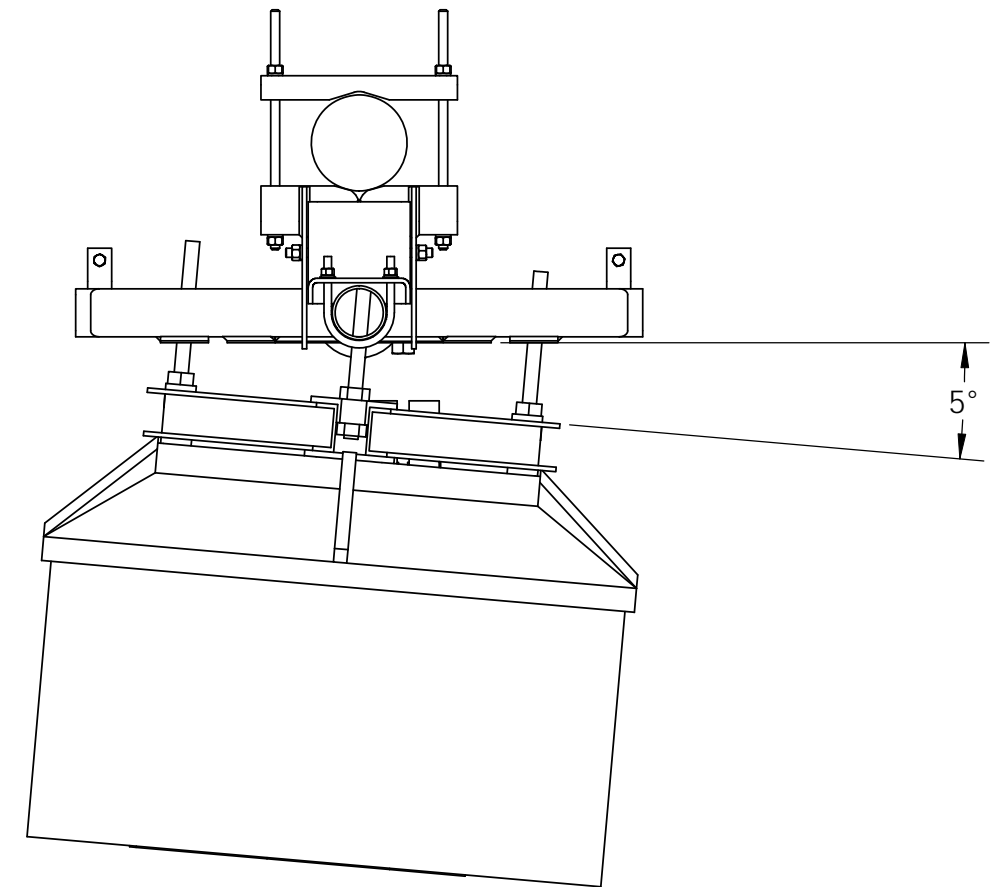


| | | | |
|--|-------------------|-----------------------|--|
| <p>These drawings and specifications are the proprietary property of ANDREW CORPORATION and may be used only for the specific purpose authorized in writing by Andrew Corporation.</p> <p>ALL DIMENSIONS ARE IN INCHES U.O.S. TOLERANCES UNLESS OTHERWISE SPECIFIED:</p> <p>.X = ± .12 ANGLES ±2° .XX = ± .06 FRACTIONS ±1/32 .XXX = ± .03</p> <p>REMOVE BURRS AND BREAK EDGES .005</p> <p>DO NOT SCALE THIS PRINT</p> | DRAWN BY: MSM | SHEET: 6 of 7 | PART NUMBER: DMHD46 WITH DISH |
| | CHECKED BY: TP | SCALE: NTS | DESCRIPTION: HEAVY DUTY DISH MOUNT |
| | DATE: 10/03/08 | MATERIAL: A36, A53 | DRAWING TYPE: ASSEMBLY DRAWING |
| | REVISION: A | FINISH: GALV A123 |  WESTCHESTER, IL. 60154 U.S.A. |

#5 VERTICAL PLANE ADJUSTMENT +/- 5°



#6 HORIZONTAL PLANE ADJUSTMENT +/- 5°



| | | | |
|--|---------------------------|-------------------------------|---|
| <p>These drawings and specifications are the proprietary property of ANDREW CORPORATION and may be used only for the specific purpose authorized in writing by Andrew Corporation.</p> <p>ALL DIMENSIONS ARE IN INCHES U.O.S. TOLERANCES UNLESS OTHERWISE SPECIFIED:</p> <p>.X = ± .12 ANGLES ±2° .XX = ± .06 FRACTIONS ±1/32 .XXX = ± .03</p> <p>REMOVE BURRS AND BREAK EDGES .005</p> <p>DO NOT SCALE THIS PRINT</p> | <p>DRAWN BY: MSM</p> | <p>SHEET: 7 of 7</p> | <p>PART NUMBER: DMHD46 WITH DISH</p> |
| | <p>CHECKED BY: TP</p> | <p>SCALE: NTS</p> | <p>DESCRIPTION: HEAVY DUTY DISH MOUNT</p> |
| | <p>DATE: 10/03/08</p> | <p>MATERIAL: A36, A53</p> | <p>DRAWING TYPE: ASSEMBLY DRAWING</p> |
| | <p>REVISION: A</p> | <p>FINISH: GALV A123</p> | <p>WESTCHESTER, IL. 60154 U.S.A.</p> |

