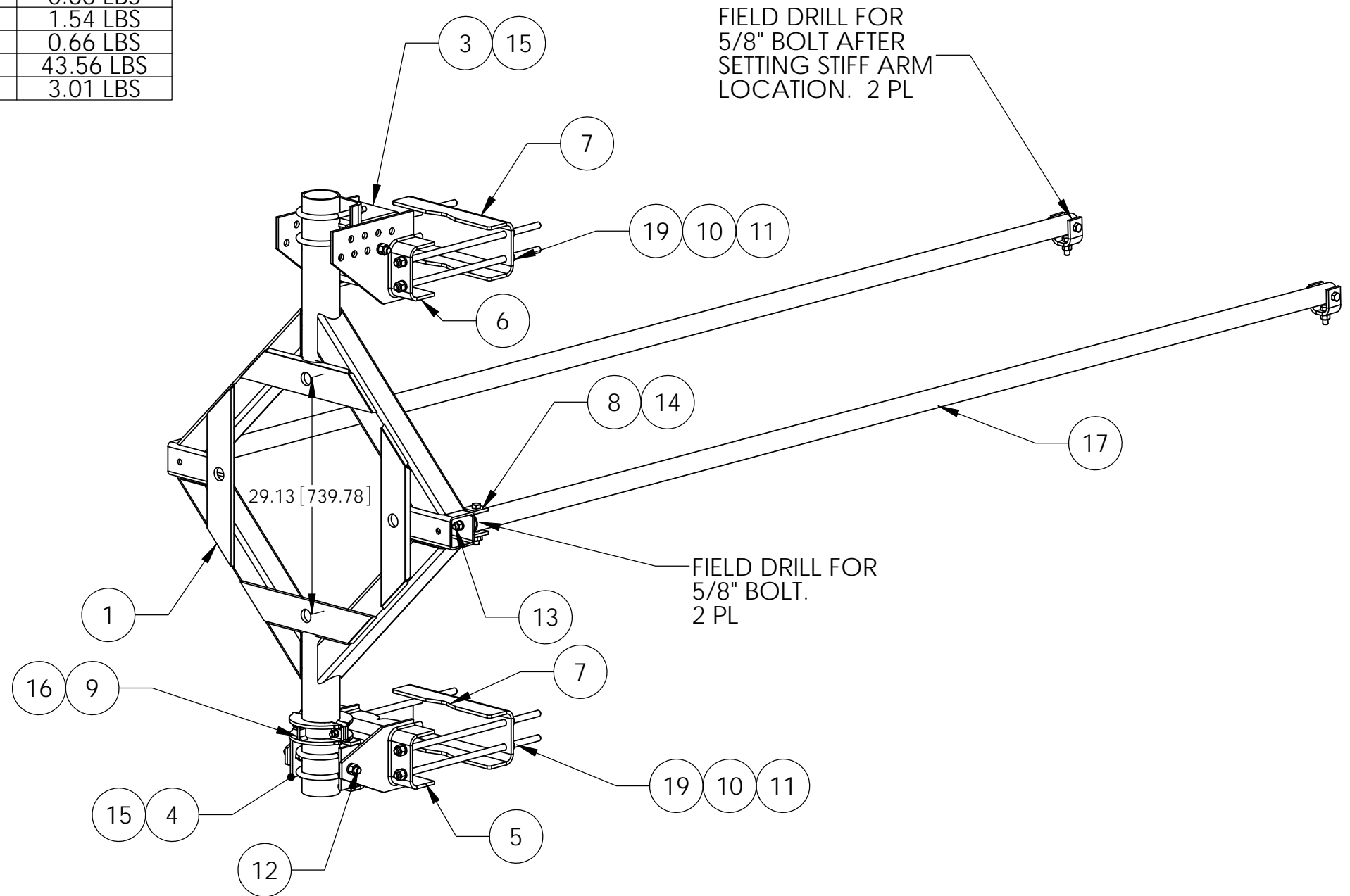


ITEM	PART NO.	DESCRIPTION	QTY.	WEIGHT
1	DMHD46.01	DISH MOUNT	1	188.65 LBS
2	DMHD46H	HARDWARE KIT (ITEMS 3-17)	1	
3	DMHD46.02	TOP PIPE MOUNT	1	17.47 LBS
4	DMHD46.03	BOTTOM PIPE MOUNT	1	11.88 LBS
5	DMHD46.04	BOTTOM SADDLE	1	32.92 LBS
6	DMHD46.05	TOP SADDLE	1	40.34 LBS
7	DMHD46.21	CLAMP PLATE	2	21.99 LBS
8	DMHD46.22	STIFF ARM MOUNT	4	1.67 LBS
9	DMHD46.26	Half Clamp 4-1/2" Pipe	2	3.40 LBS
10	GN-06	3/4" GALV HEX NUT	16	0.04 LBS
11	GWL-06	3/4" GALV LOCK WASHER	16	0.01 LBS
12	GB-06225	3/4" X 2-1/4" GALV BOLT KIT	4	0.66 LBS
13	GB05165	5/8" X 1-3/4" GALV BOLT KIT	4	0.66 LBS
14	GB-05445	5/8" X 4-1/2" GALV BOLT KIT	4	0.66 LBS
15	GUB-5456	5/8" X 4-5/8" X 6-1/2" GALV U-BOLT	4	1.54 LBS
16	GB-04205	1/2" X 2" GALV BOLT KIT	2	0.66 LBS
17	MT-537-150	2-3/8" OD X 12'-6" PIPE	2	43.56 LBS
19	MT-384-24	3/4" X 24" GALV THREADED ROD	8	3.01 LBS

REVISIONS				
REV.	ZONE	DESCRIPTION	BY	DATE
A		INITIAL RELEASE	AW	05/29/07
B		INCREASE LENGTH OF ITEMS 3 & 6	MSM	03/27/08
C		UPDATE HARDWARE KIT, ADD SHEET 2	MSM	08/25/08
D		ADD CHART TO SHEET TWO, ADD HALF CLAMPS	MSM	9/30/2008
E		REDESIGN OF HALF CLAMP, CHG STIFF ARM HDW	MSM	10/16/2008
F		UPDATE ITEMS 3,4 & 7, CHG ITEM #19	MSM	01/21/09

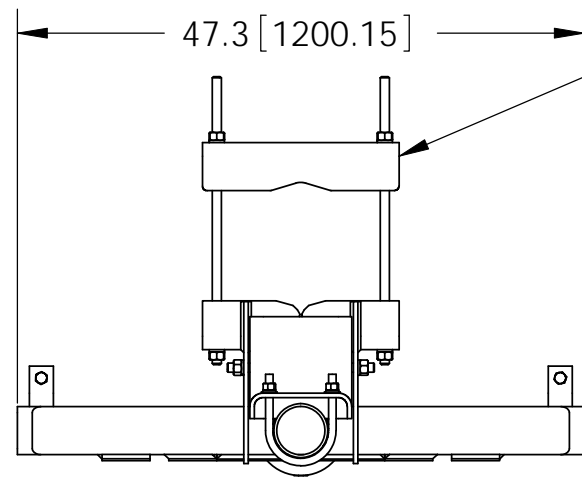


NOTES:

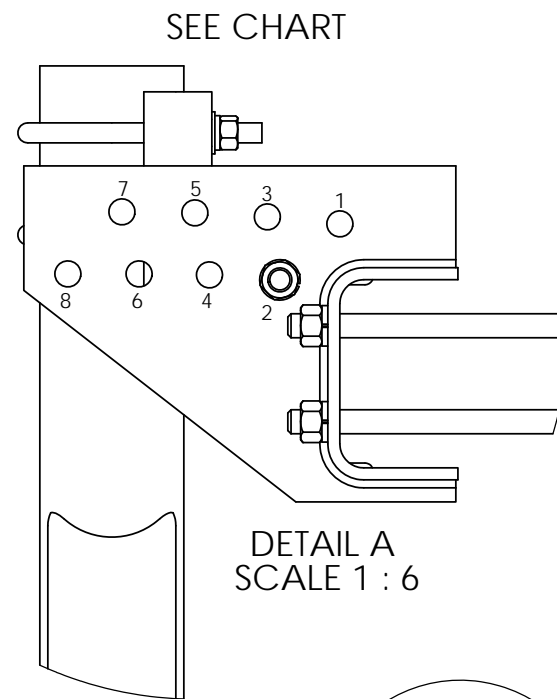
1. ALL METRIC DIMENSIONS ARE IN BRACKETS.
2. STAMP PART IDENTIFICATION NUMBER.
3. OPTIONAL EQUIPMENT SHOWN ON PAGE 4.
4. UP TO 5% ADDITIONAL HARDWARE INCLUDED.

These drawings and specifications are the proprietary property of ANDREW CORPORATION and may be used only for the specific purpose authorized in writing by Andrew Corporation. ALL DIMENSIONS ARE IN INCHES U.O.S. TOLERANCES UNLESS OTHERWISE SPECIFIED: .X = ± .12 ANGLES ± ±2' .XX = ± .06 FRACTIONS ± ±1/32 .XXX = ± .03 REMOVE BURRS AND BREAK EDGES .005 DO NOT SCALE THIS PRINT	DRAWN BY: AW	SHEET: 1 of 7	PART NUMBER: DMHD-46
	CHECKED BY: TP	SCALE: NTS	DESCRIPTION: HEAVY DUTY DISH MOUNT 4' - 6'
	DATE: 05/29/07	MATERIAL: A36	DRAWING TYPE: ASSEMBLY DRAWING
	REVISION: F	FINISH: GALV A123	WEIGHT: 503.35 LBS





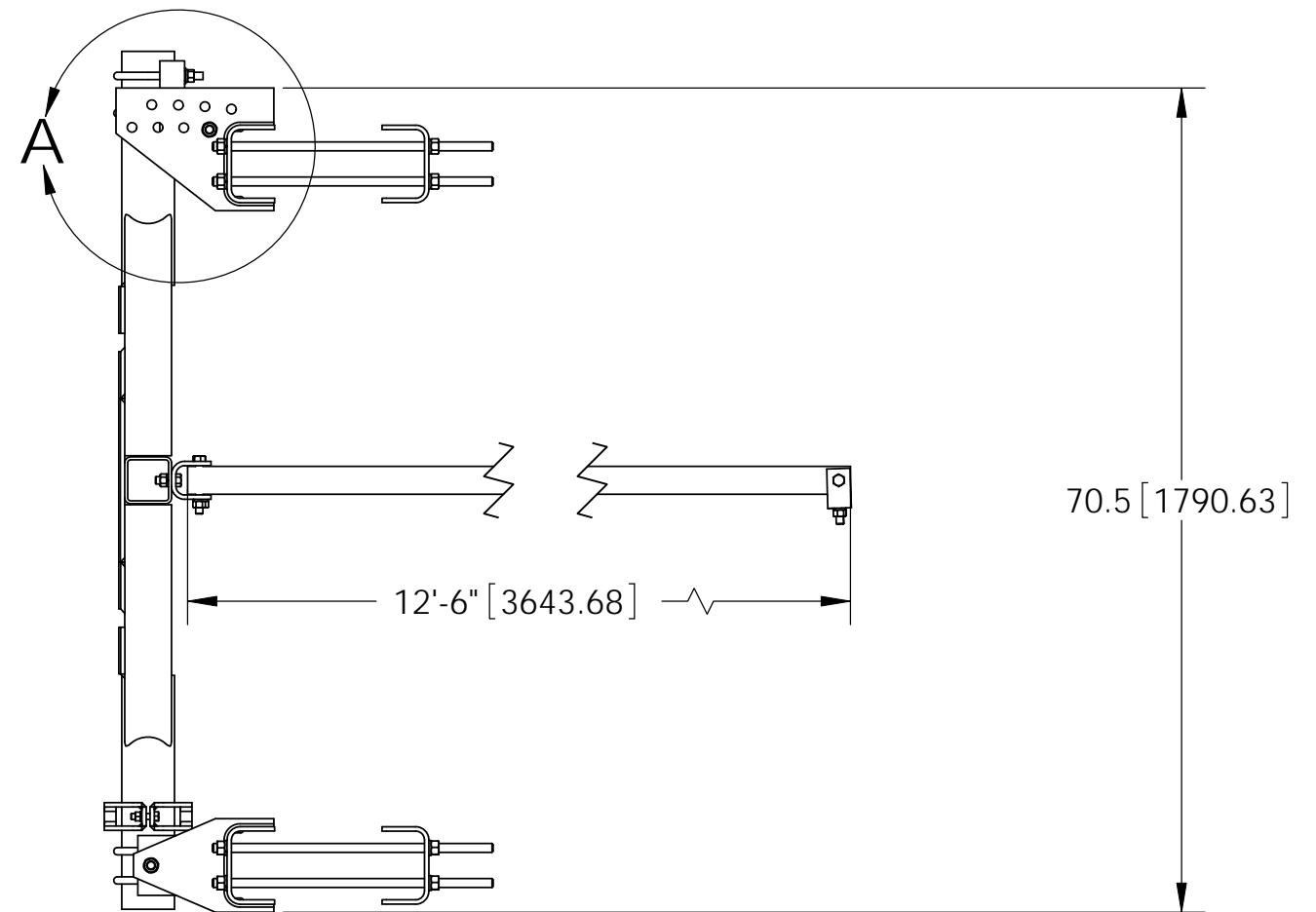
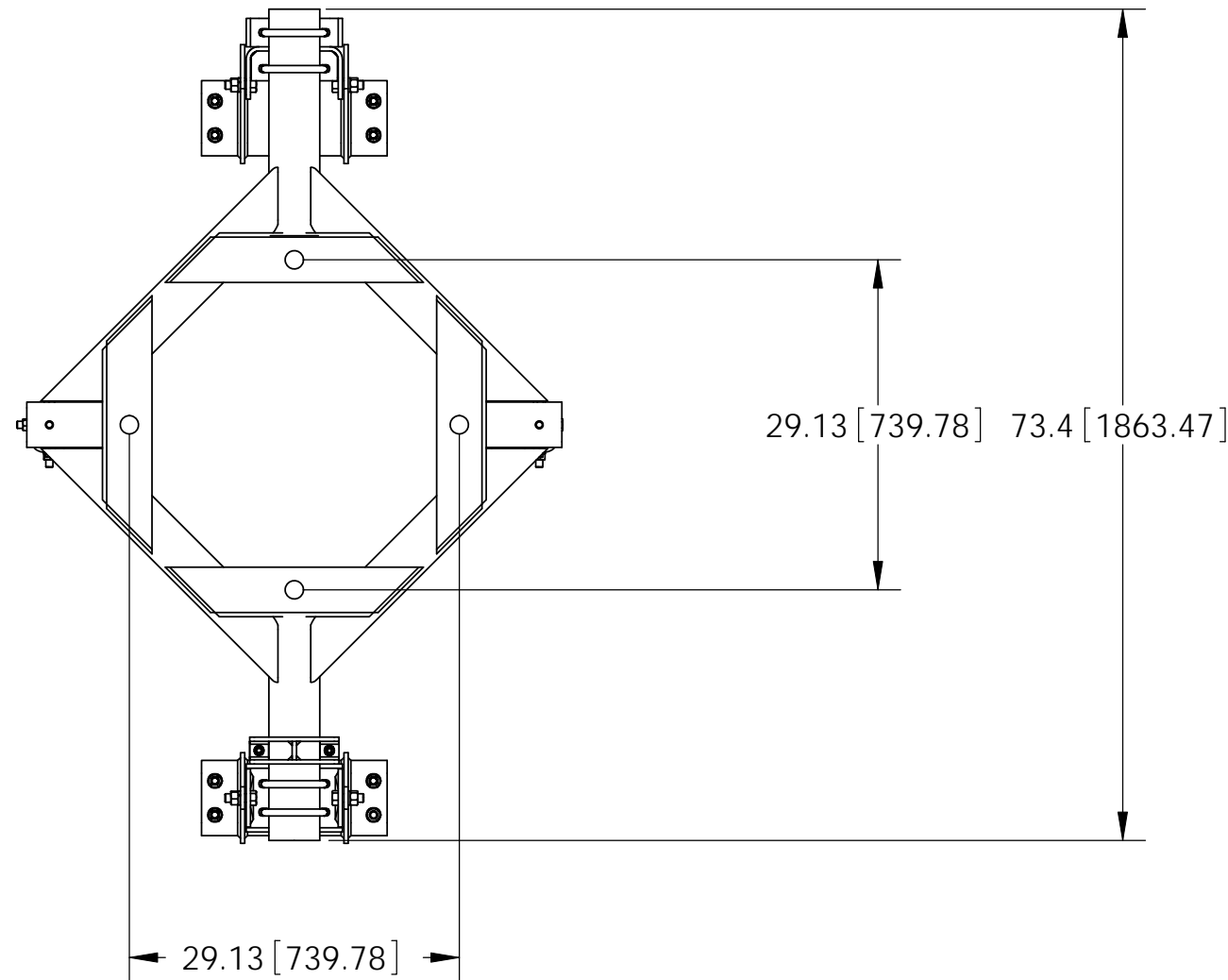
SADDEL RANGE
UP TO 12" OD/
12" 60° ANGLE LEG/
9" 90° ANGLE LEG



SEE CHART

DEGREE OF TILT AT 70.5" MOUNTING BRACKET SEPERATION

HOLE LOCATION	DEGREE OF TILT
1	1°
2	0°
3	3°
4	2°
5	5°
6	4°
7	7°
8	6°



These drawings and specifications are the proprietary property of ANDREW CORPORATION and may be used only for the specific purpose authorized in writing by Andrew Corporation.

ALL DIMENSIONS ARE IN INCHES U.O.S.
TOLERANCES UNLESS OTHERWISE SPECIFIED:
.X = ± .12 ANGLES ±2°
.XX = ± .06 FRACTIONS ±1/32
.XXX = ± .03

REMOVE BURRS AND BREAK EDGES .005

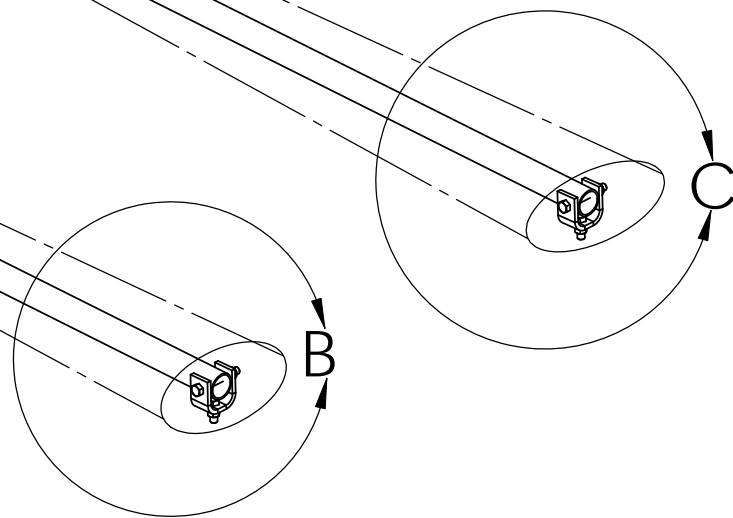
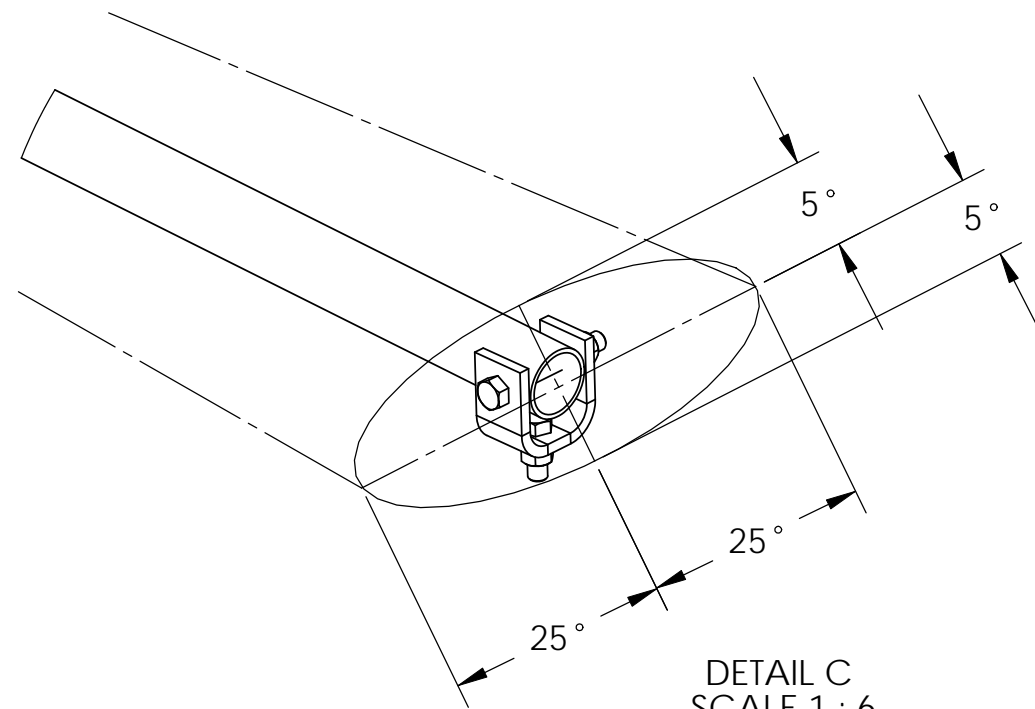
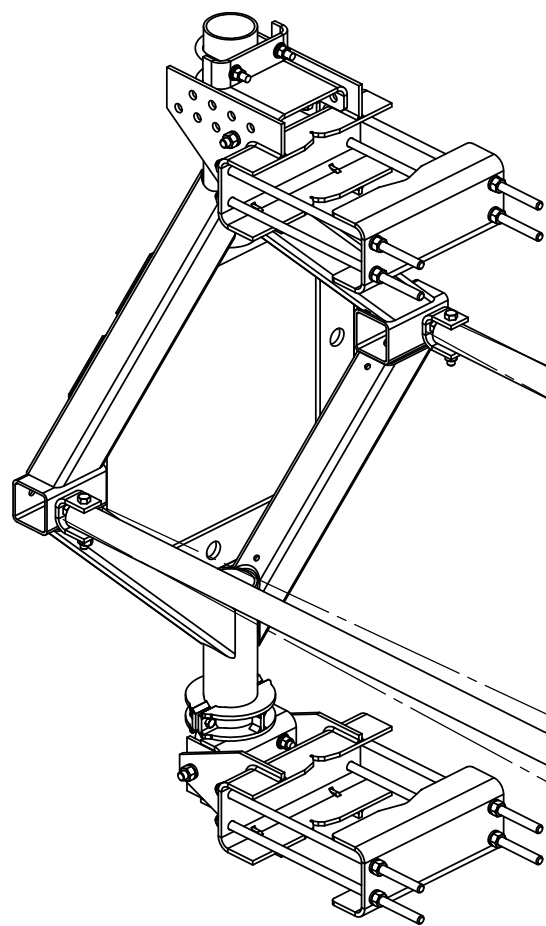
DO NOT SCALE THIS PRINT

DRAWN BY: AW
CHECKED BY: TP
DATE: 05/29/07
REVISION: F

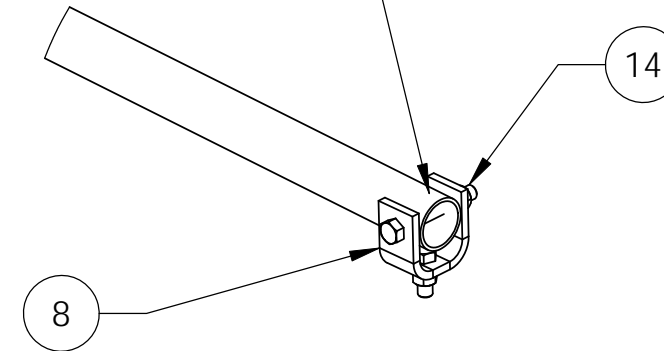
SHEET: 2 of 7
SCALE: NTS
MATERIAL: A36
FINISH: GALV A123
WEIGHT: 503.35 LBS

PART NUMBER: DMHD-46
DESCRIPTION: HEAVY DUTY DISH MOUNT 4' - 6'
DRAWING TYPE: ASSEMBLY DRAWING


ANDREW®
WESTCHESTER, IL. 60154
U.S.A.



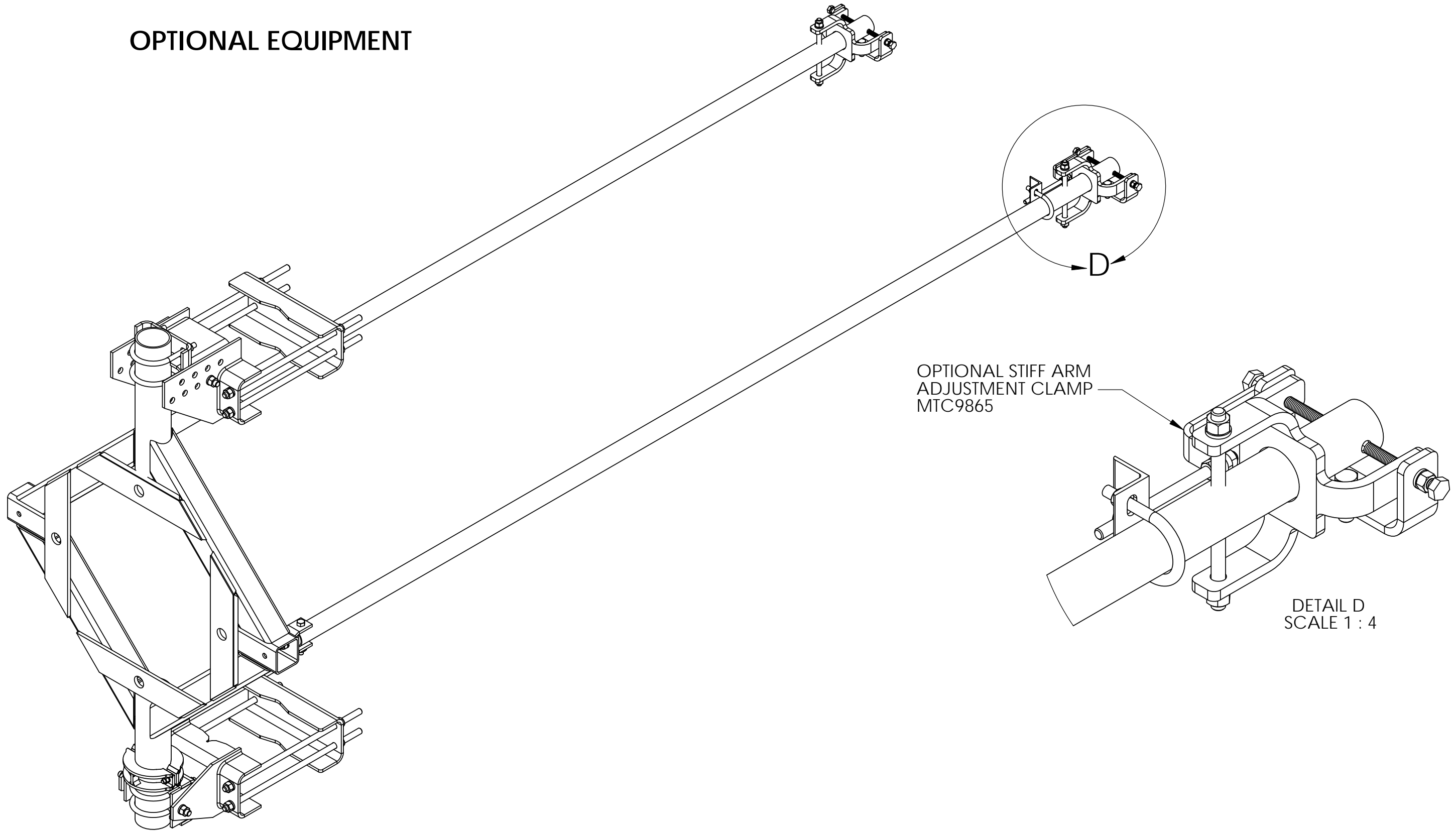
FIELD DRILL FOR
5/8" BOLT AFTER
SETTING STIFF ARM



NOTE: Struts should be positioned as close to zero degrees (parallel to the horizon) in elevation as possible when installed. Azimuth positioning should be parallel to the path of the antenna. If this cannot be done, struts may be positioned within the angular limits shown in the illustrations. Typical for both struts.

These drawings and specifications are the proprietary property of ANDREW CORPORATION and may be used only for the specific purpose authorized in writing by Andrew Corporation. ALL DIMENSIONS ARE IN INCHES U.O.S. TOLERANCES UNLESS OTHERWISE SPECIFIED: .X = ± .12 ANGLES ±2° .XX = ± .06 FRACTIONS ±1/32 .XXX = ± .03 REMOVE BURRS AND BREAK EDGES .005 DO NOT SCALE THIS PRINT	DRAWN BY: AW	SHEET: 3 of 7	PART NUMBER: DMHD-46
	CHECKED BY: TP	SCALE: NTS	DESCRIPTION: HEAVY DUTY DISH MOUNT 4' - 6'
	DATE: 05/29/07	MATERIAL: A36	DRAWING TYPE: ASSEMBLY DRAWING
	REVISION: F	FINISH: GALV A123	 WESTCHESTER, IL. 60154 U.S.A.
	WEIGHT: 503.35 LBS		

OPTIONAL EQUIPMENT

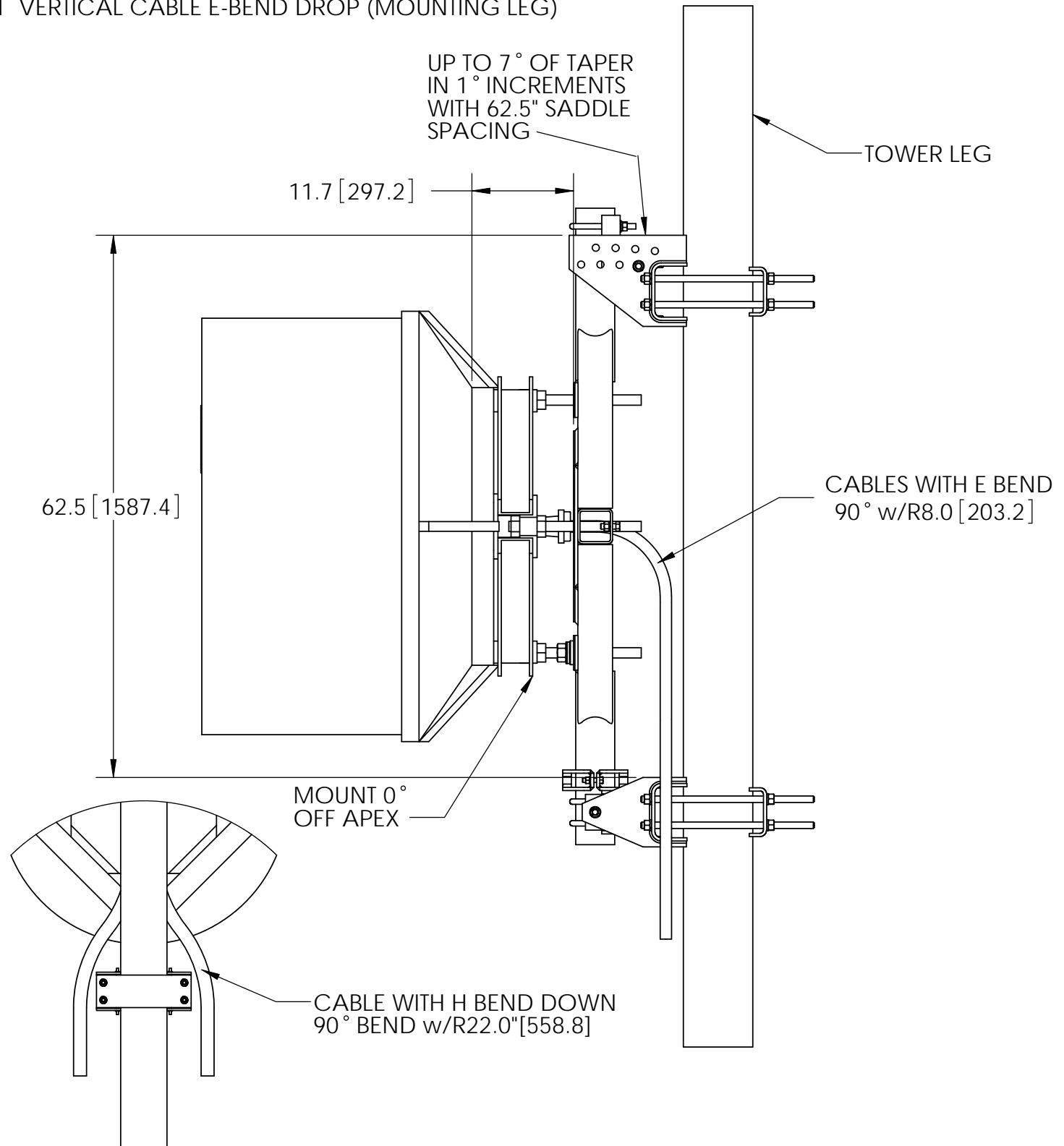


OPTIONAL STIFF ARM
ADJUSTMENT CLAMP
MTC9865

DETAIL D
SCALE 1 : 4

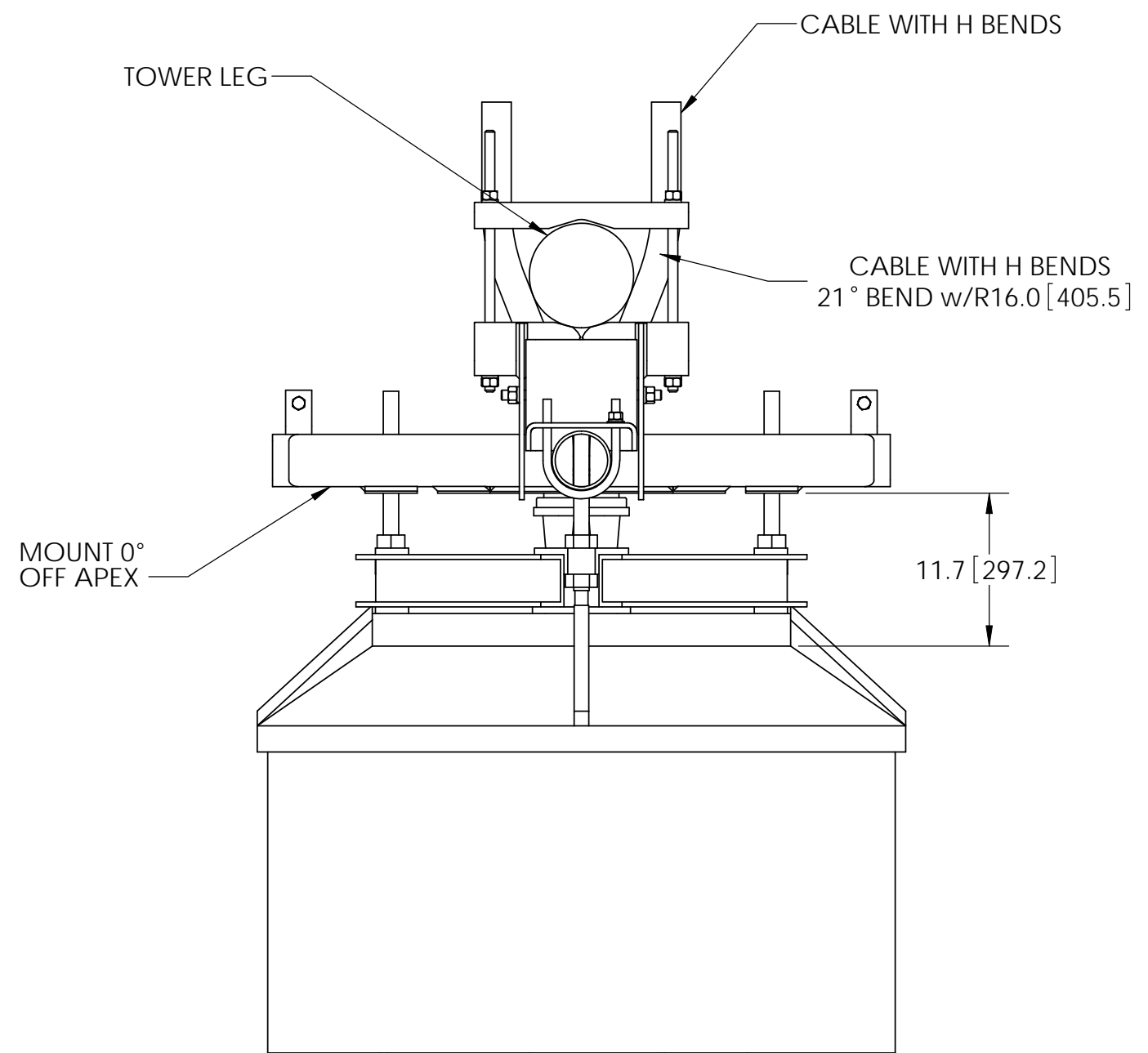
<p>These drawings and specifications are the proprietary property of ANDREW CORPORATION and may be used only for the specific purpose authorized in writing by Andrew Corporation.</p> <p>ALL DIMENSIONS ARE IN INCHES U.O.S. TOLERANCES UNLESS OTHERWISE SPECIFIED:</p> <p>.X = ± .12 ANGLES ±2° .XX = ± .06 FRACTIONS ±1/32 .XXX = ± .03</p> <p>REMOVE BURRS AND BREAK EDGES .005</p> <p>DO NOT SCALE THIS PRINT</p>	<p>DRAWN BY: AW</p>	<p>SHEET: 4 of 7</p>	<p>PART NUMBER: DMHD-46</p>
	<p>CHECKED BY: TP</p>	<p>SCALE: NTS</p>	<p>DESCRIPTION: HEAVY DUTY DISH MOUNT 4' - 6'</p>
	<p>DATE: 05/29/07</p>	<p>MATERIAL: A36</p>	<p>DRAWING TYPE: ASSEMBLY DRAWING</p>
	<p>REVISION: F</p>	<p>FINISH: GALV A123</p>	<p>WESTCHESTER, IL. 60154 U.S.A.</p>
		<p>WEIGHT: 503.35 LBS</p>	

#1 VERTICAL CABLE E-BEND DROP (MOUNTING LEG)




REVISIONS				
REV.	ZONE	DESCRIPTION	BY	DATE
A		INITIAL RELEASE	MSM	10/03/08

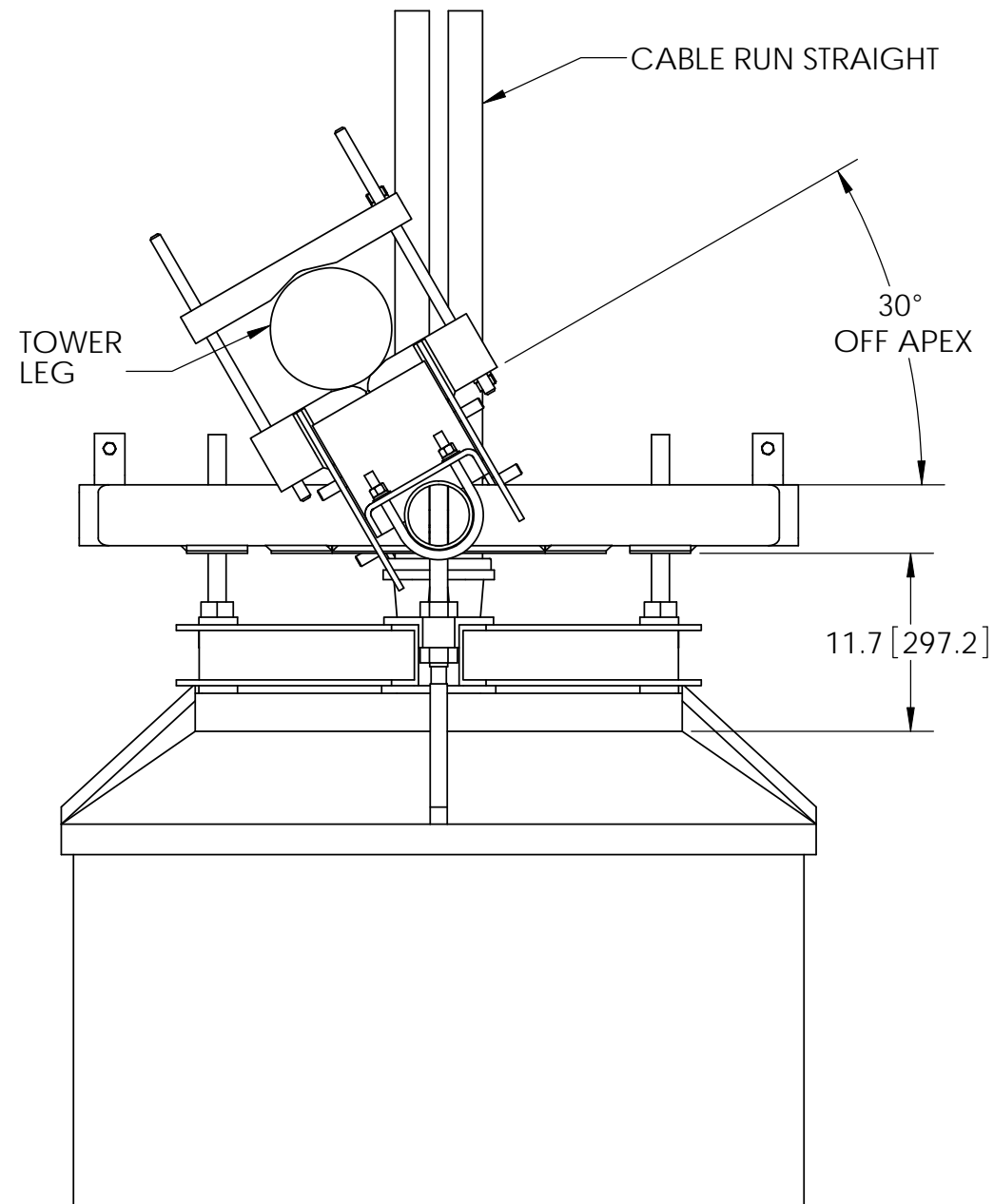
#2 DIRECT APEX MOUNT WITH HORIZONTAL H-BEND TO BACK LEGS



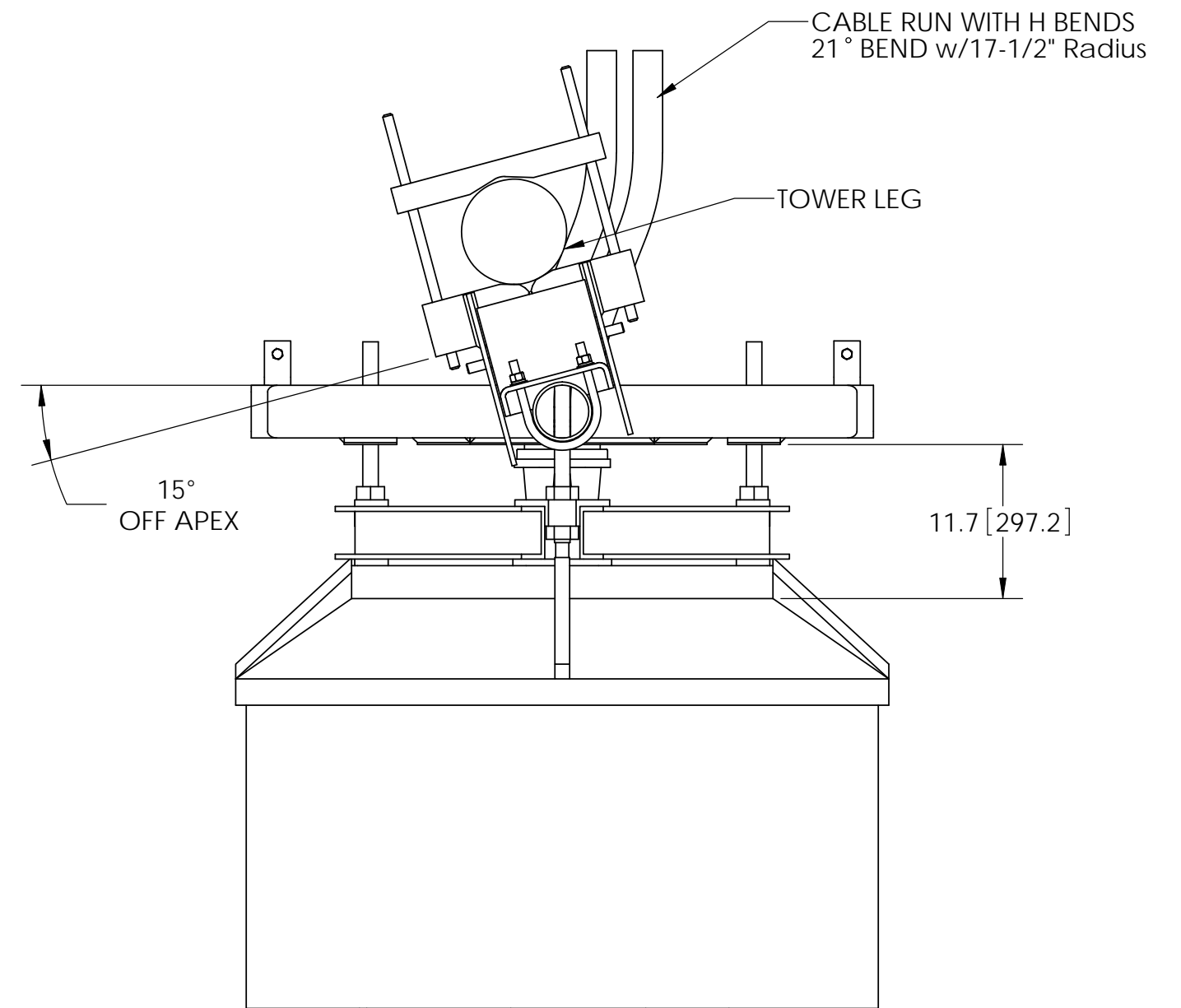
- NOTES:
1. ALL METRIC DIMENSIONS ARE IN BRACKETS.
 2. IN PRACTICAL APPLICATIONS THE CABLE BENDS WILL PERFORM DIFFERENTLY DEPENDING ON LOADS AND ENVIRONMENT.
 3. ALL VIEWS SHOWN WITH S-SERIES SHIELDED ANTENNA(4FT).
 4. ALL VIEWS USE EW52 CABLE WITH STANDARD CABLE TOLERANCES.


<small>These drawings and specifications are the proprietary property of ANDREW CORPORATION and may be used only for the specific purpose authorized in writing by Andrew Corporation.</small> ALL DIMENSIONS ARE IN INCHES U.O.S. TOLERANCES UNLESS OTHERWISE SPECIFIED: .X = ± .12 ANGLES ±2° .XX = ± .06 FRACTIONS ±1/32 .XXX = ± .03 REMOVE BURRS AND BREAK EDGES .005 DO NOT SCALE THIS PRINT	DRAWN BY: MSM	SHEET: 5 of 7	PART NUMBER: DMHD46 WITH DISH
	CHECKED BY: TP	SCALE: NTS	DESCRIPTION: HEAVY DUTY DISH MOUNT
	DATE: 10/03/08	MATERIAL: A36, A53	DRAWING TYPE: ASSEMBLY DRAWING
	REVISION: A	FINISH: GALV A123	 WESTCHESTER, IL. 60154 U.S.A.

#3 HORIZONTAL CABLE RUN WITH NO BENDS (30° OFF APEX)

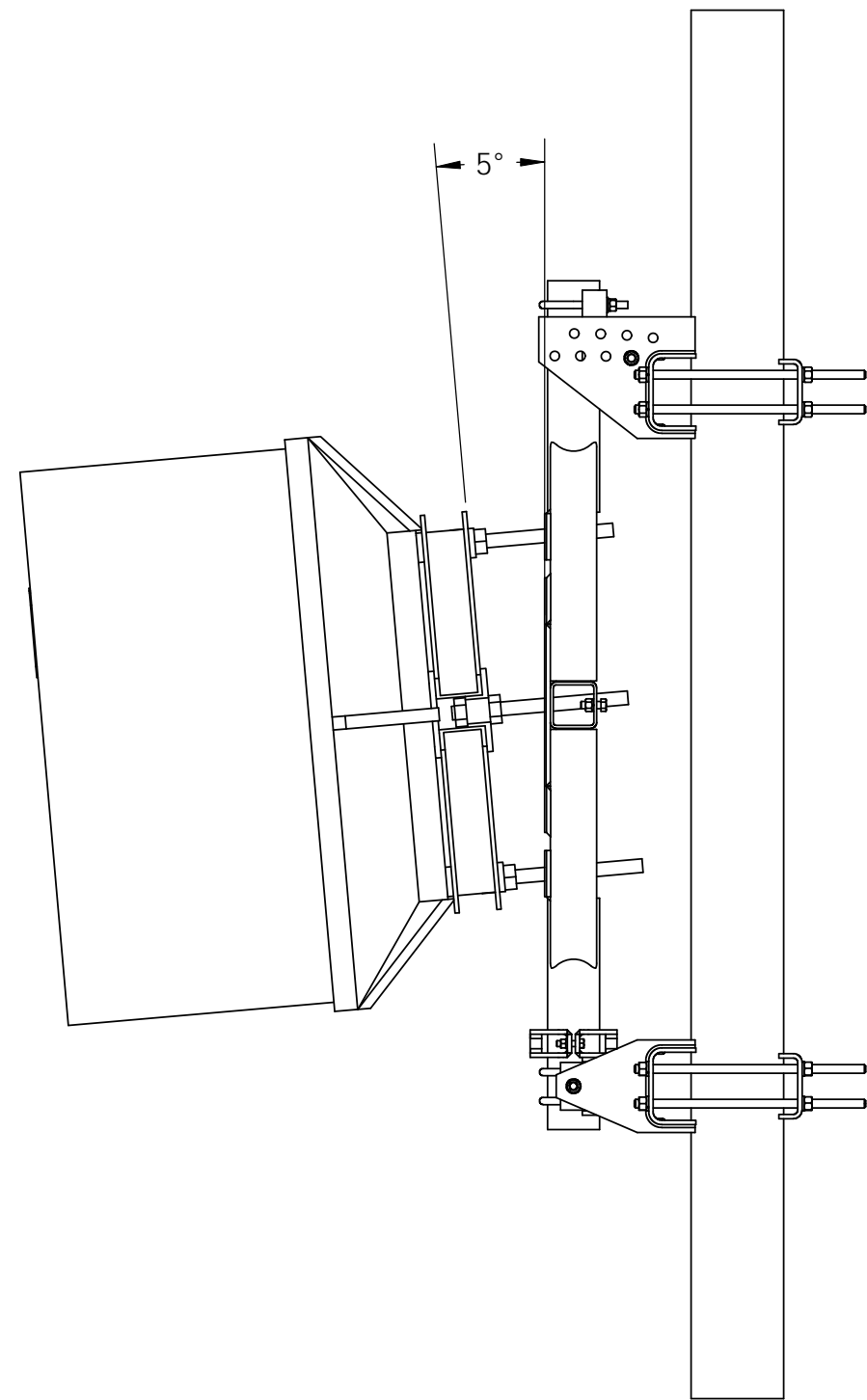


#4 HORIZONTAL CABLE RUN WITH BENDS (15° OFF APEX)

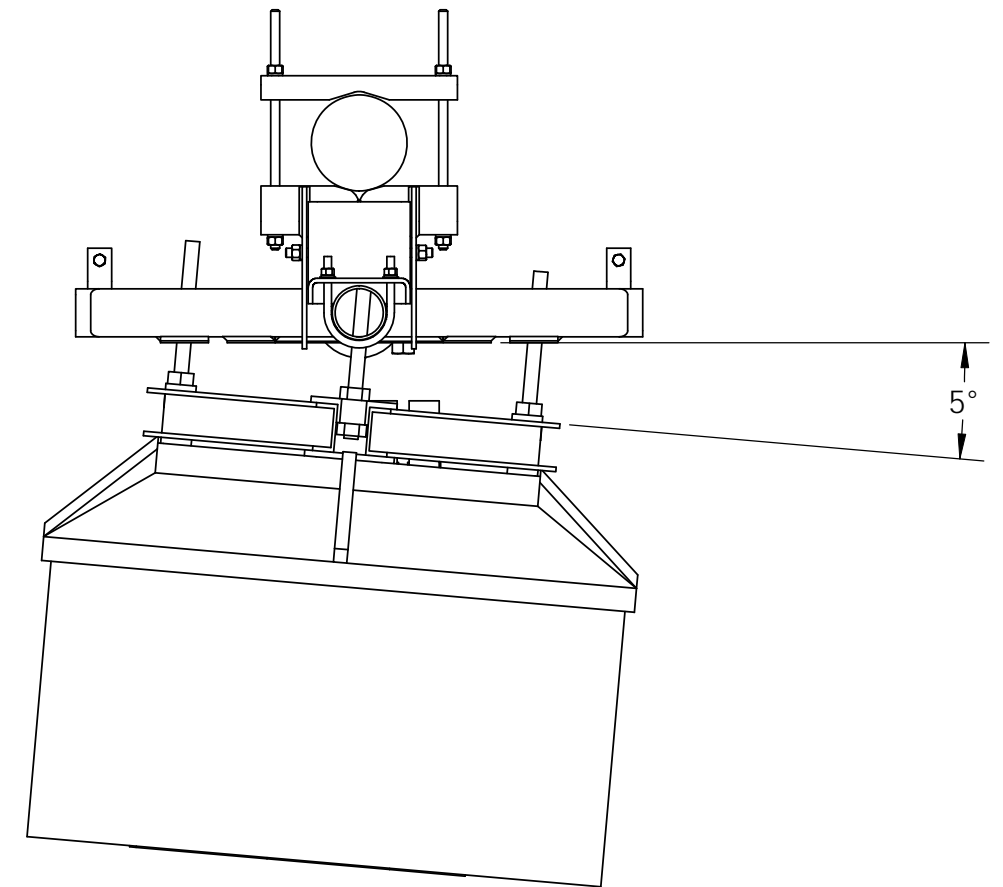



These drawings and specifications are the proprietary property of ANDREW CORPORATION and may be used only for the specific purpose authorized in writing by Andrew Corporation. ALL DIMENSIONS ARE IN INCHES U.O.S. TOLERANCES UNLESS OTHERWISE SPECIFIED: .X = ± .12 ANGLES ±2° .XX = ± .06 FRACTIONS ±1/32 .XXX = ± .03 REMOVE BURRS AND BREAK EDGES .005 DO NOT SCALE THIS PRINT	DRAWN BY: MSM	SHEET: 6 of 7	PART NUMBER: DMHD46 WITH DISH
	CHECKED BY: TP	SCALE: NTS	DESCRIPTION: HEAVY DUTY DISH MOUNT
	DATE: 10/03/08	MATERIAL: A36, A53	DRAWING TYPE: ASSEMBLY DRAWING
	REVISION: A	FINISH: GALV A123	 WESTCHESTER, IL. 60154 U.S.A.

#5 VERTICAL PLANE ADJUSTMENT +/- 5°



#6 HORIZONTAL PLANE ADJUSTMENT +/- 5°



<p>These drawings and specifications are the proprietary property of ANDREW CORPORATION and may be used only for the specific purpose authorized in writing by Andrew Corporation.</p> <p>ALL DIMENSIONS ARE IN INCHES U.O.S. TOLERANCES UNLESS OTHERWISE SPECIFIED:</p> <p>.X = ± .12 ANGLES ±2° .XX = ± .06 FRACTIONS ±1/32 .XXX = ± .03</p> <p>REMOVE BURRS AND BREAK EDGES .005</p> <p>DO NOT SCALE THIS PRINT</p>	DRAWN BY: MSM	SHEET: 7 of 7	PART NUMBER: DMHD46 WITH DISH
	CHECKED BY: TP	SCALE: NTS	DESCRIPTION: HEAVY DUTY DISH MOUNT
	DATE: 10/03/08	MATERIAL: A36, A53	DRAWING TYPE: ASSEMBLY DRAWING
	REVISION: A	FINISH: GALV A123	 WESTCHESTER, IL. 60154 U.S.A.