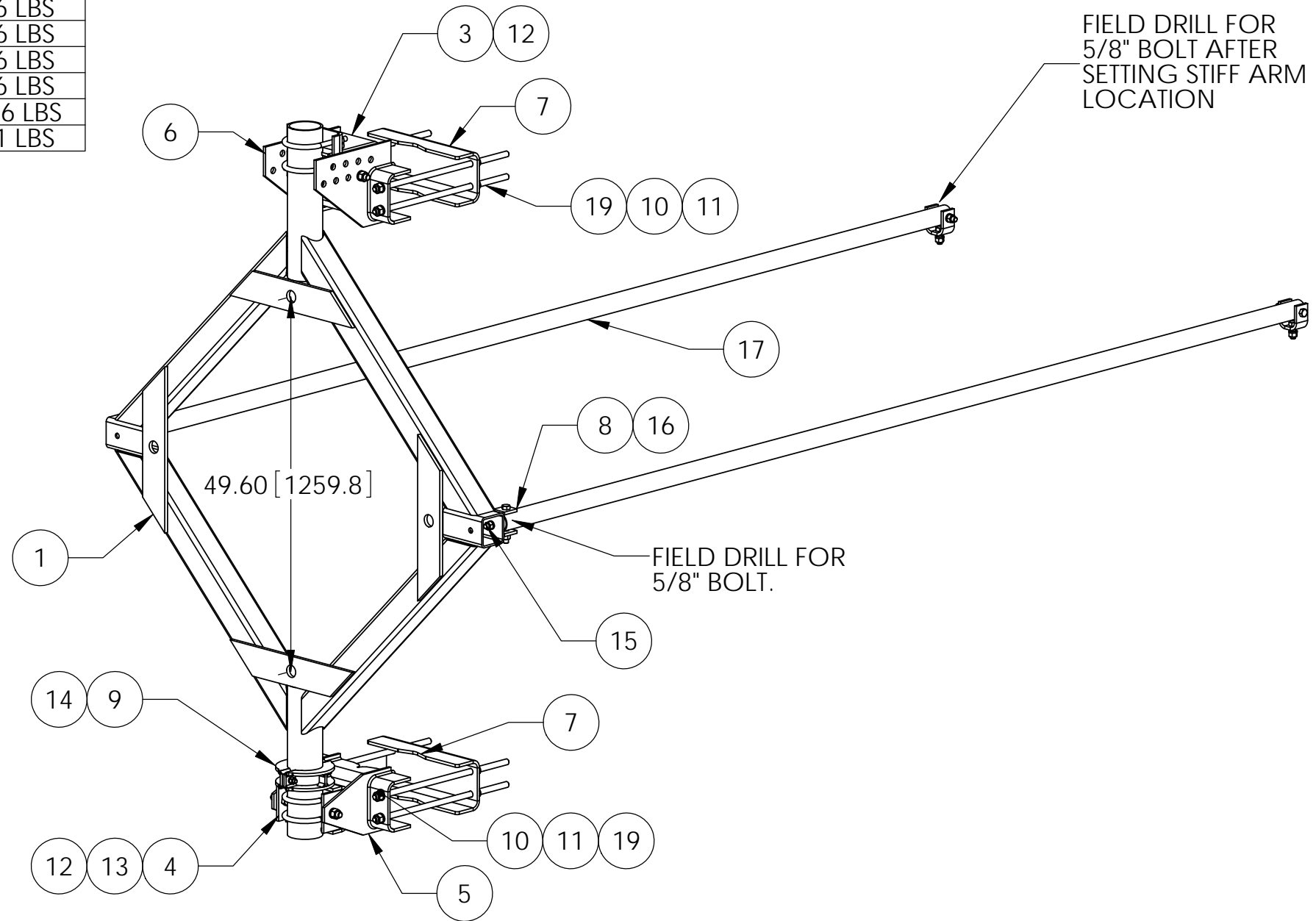


ITEM	PART NO.	DESCRIPTION	QTY.	WEIGHT
1	DMHD810.01	DISH MOUNT	1	247.31 LBS
2	DMHD46H	HARDWARE KIT 9ITEMS 3-17)	1	
3	DMHD46.02	TOP PIPE MOUNT	1	17.47 LBS
4	DMHD46.03	BOTTOM PIPE MOUNT	1	11.88 LBS
5	DMHD46.04	BOTTOM SADDLE	1	32.92 LBS
6	DMHD46.05	TOP SADDLE	1	40.34 LBS
7	DMHD46.21	CLAMP PLATE	2	21.99 LBS
8	DMHD46.22	STIFF ARM MOUNT	4	1.67 LBS
9	DMHD46.26	Half Clamp 4-1/2" Pipe	2	3.40 LBS
10	GN-06	3/4" GALV HEX NUT	17	0.04 LBS
11	GWL-06	3/4" GALV LOCK WASHER	17	0.01 LBS
12	GUB-5456	5/8" X 4-5/8" X 6-1/2" GALV U-BOLT	4	1.54 LBS
13	GB-06225	3/4" X 2-1/4" GALV BOLT KIT	4	0.66 LBS
14	GB-04205	1/2" X 2" GALV BOLT KIT	2	0.66 LBS
15	GB05165	5/8" X 1-3/4" GALV BOLT KIT	4	0.66 LBS
16	GB-05445	5/8" X 4-1/2" GALV BOLT KIT	4	0.66 LBS
17	MT-537-150	2-3/8" OD X 12'-6" PIPE	2	43.56 LBS
19	MT-384-24	3/4" X 24" GALV THREADED ROD	8	3.01 LBS

REVISIONS				
REV.	ZONE	DESCRIPTION	BY	DATE
A		INITIAL RELEASE	MSM	01/23/08
B		INCREASE ITEMS 5 & 6	MSM	03/27/08
C		UPDATE HARDWARE KIT, ADD SHEET 2	MSM	08/25/08
D		ADD PIPE COLLAR AND TABLE ON SHEET 2	MSM	10/01/08
E		Add Stiff Arm Adj and new Half Clamp	MSM	10/27/2008
F		UPDATE ITEMS 3,4, & 7, CHG ITEM #19	MSM	01/21/09

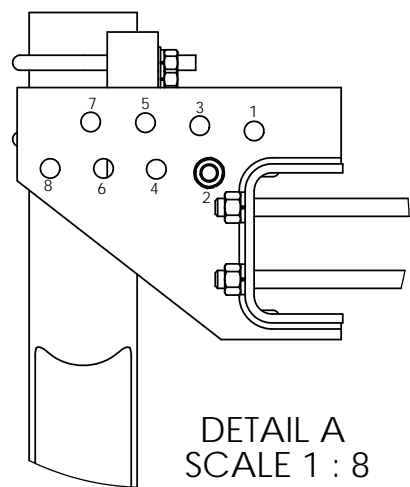
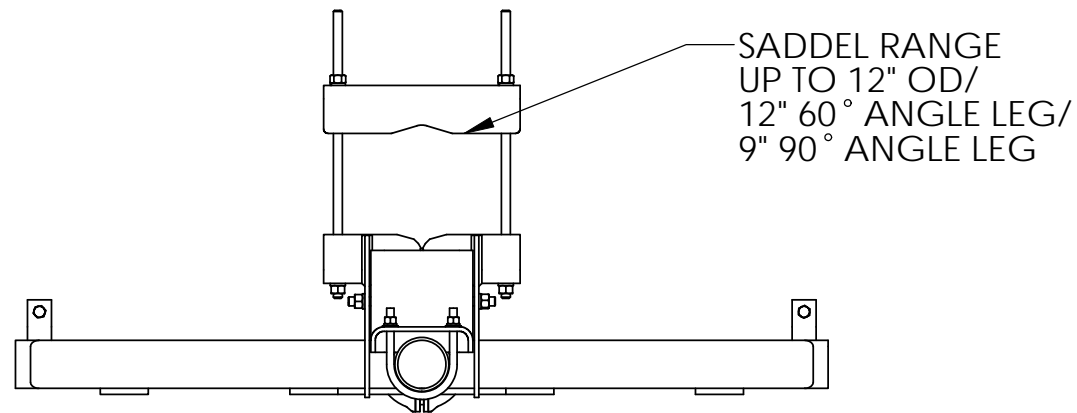


NOTES:

1. ALL METRIC DIMENSIONS ARE IN BRACKETS.
2. STAMP PART IDENTIFICATION NUMBER.
3. OPTIONAL EQUIPMENT SHOWN ON PAGE 4.
4. UP TO 5% ADDITIONAL HARDWARE INCLUDED.

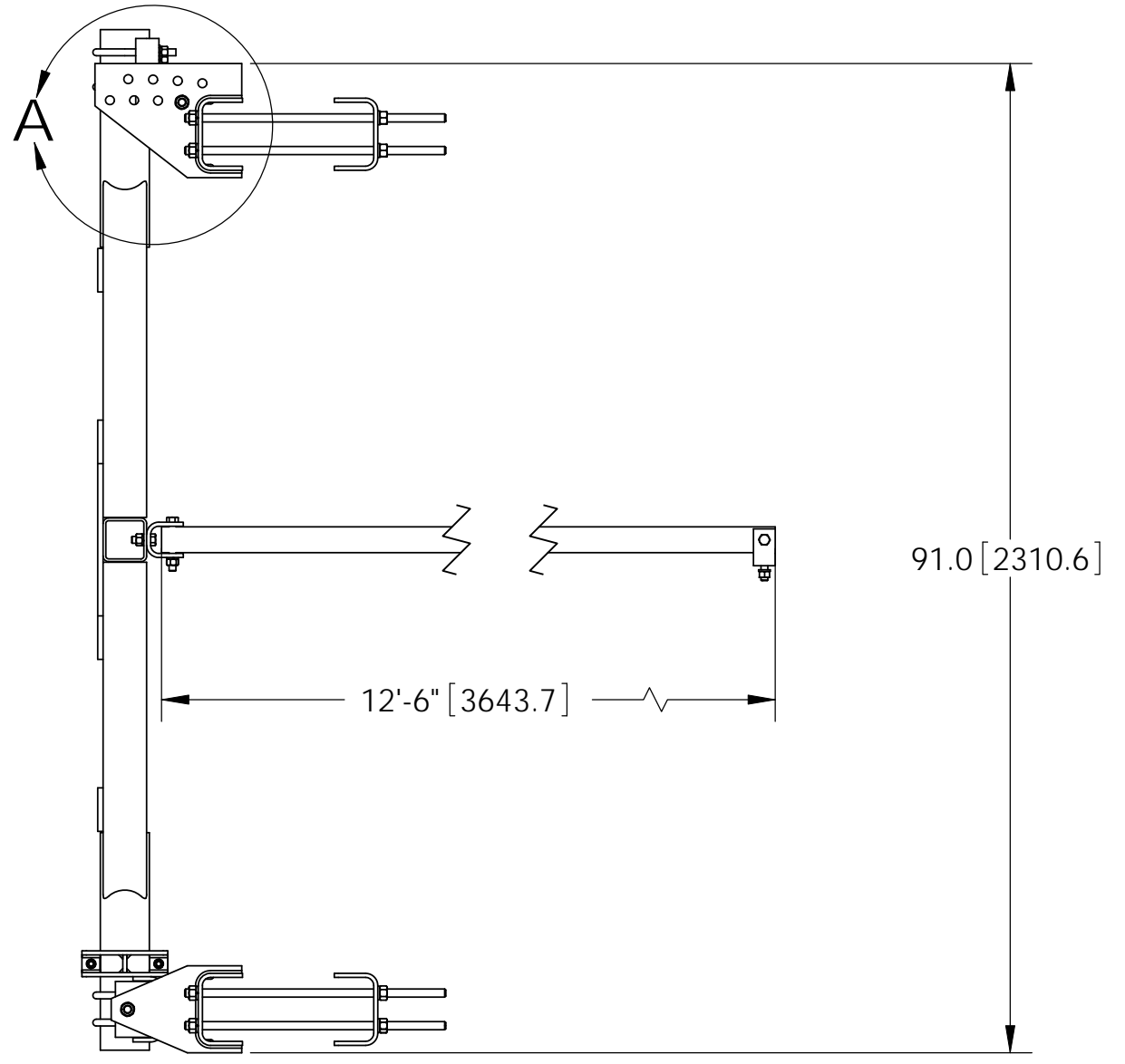
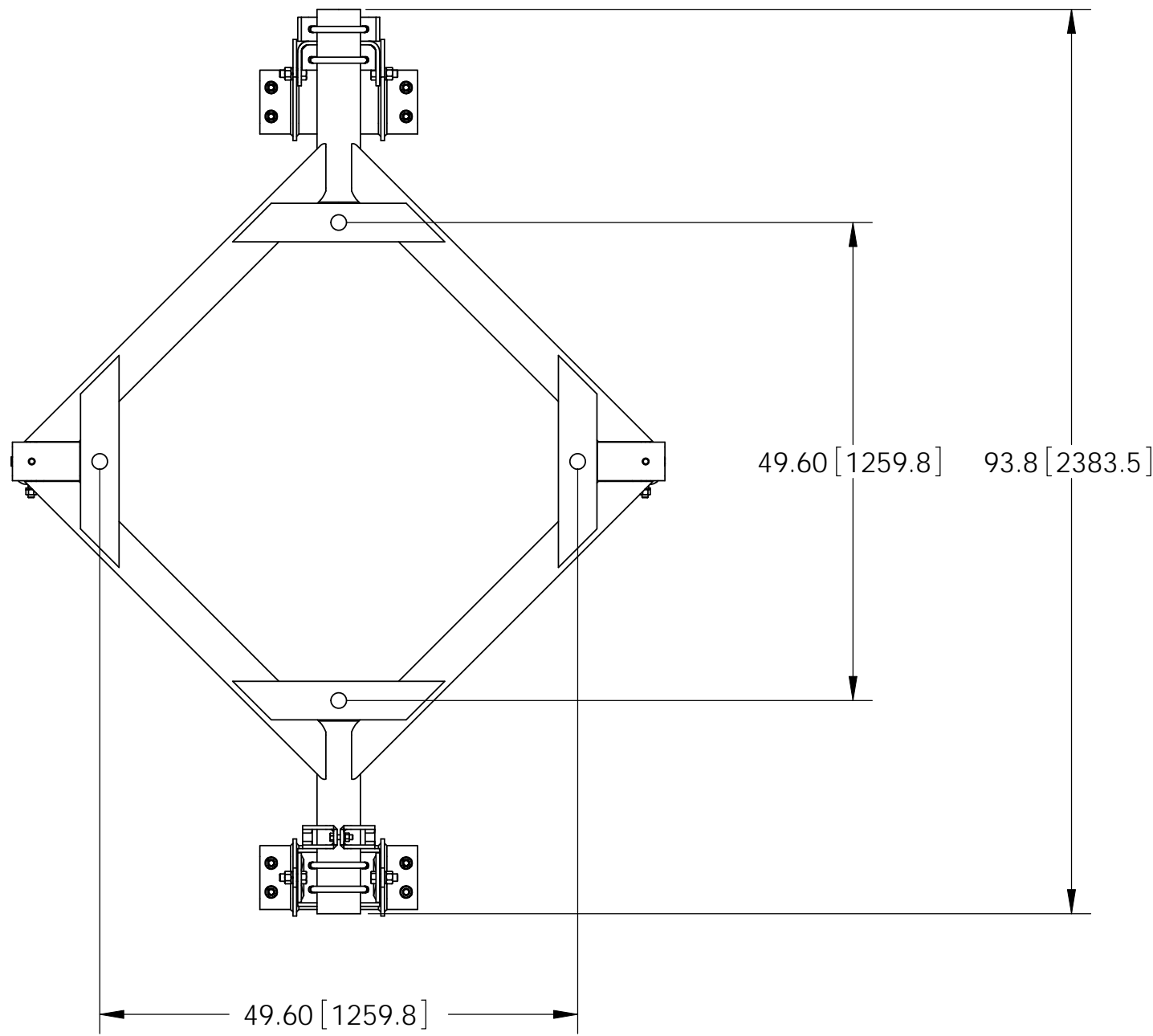
<small>These drawings and specifications are the proprietary property of ANDREW CORPORATION and may be used only for the specific purpose authorized in writing by Andrew Corporation.</small> ALL DIMENSIONS ARE IN INCHES U.O.S. TOLERANCES UNLESS OTHERWISE SPECIFIED: .X = ± .12 ANGLES ±2° .XX = ± .06 FRACTIONS ±1/32 .XXX = ± .03 REMOVE BURRS AND BREAK EDGES .005 DO NOT SCALE THIS PRINT	DRAWN BY: MSM	SHEET: 1 of 7	PART NUMBER: DMHD-810
	CHECKED BY: TP	SCALE: NTS	DESCRIPTION: HEAVY DUTY DISH MOUNT 8' - 10'
	DATE: 1/23/08	MATERIAL: A36	DRAWING TYPE: ASSEMBLY DRAWING
	REVISION: F	FINISH: GALV A123	WEIGHT: 557.00 LBS





DEGREE OF TILT AT 91.0" MOUNTING BRACKET SEPERATION

HOLE LOCATION	DEGREE OF TILT
1	1°
2	0°
3	3°
4	2°
5	5°
6	4°
7	7°
8	8°




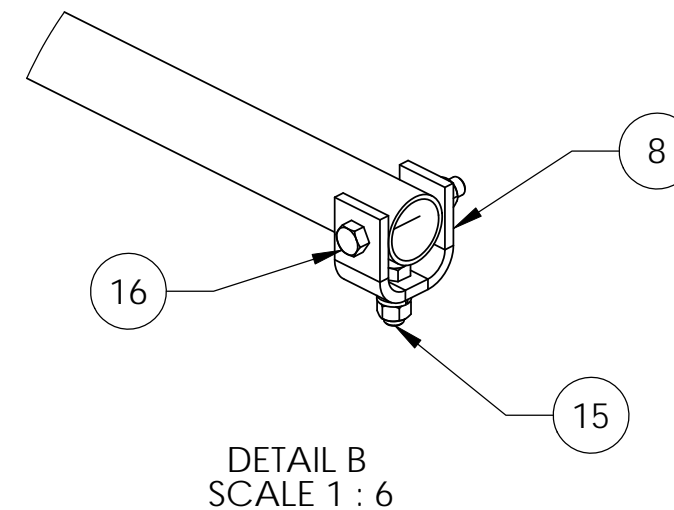
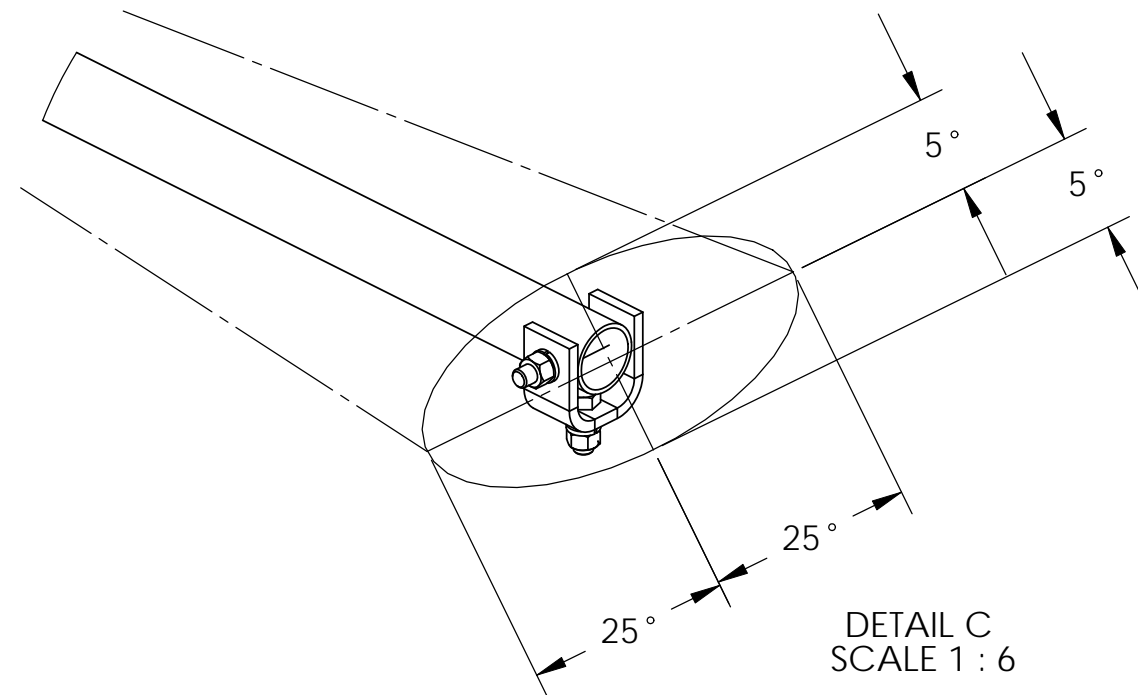
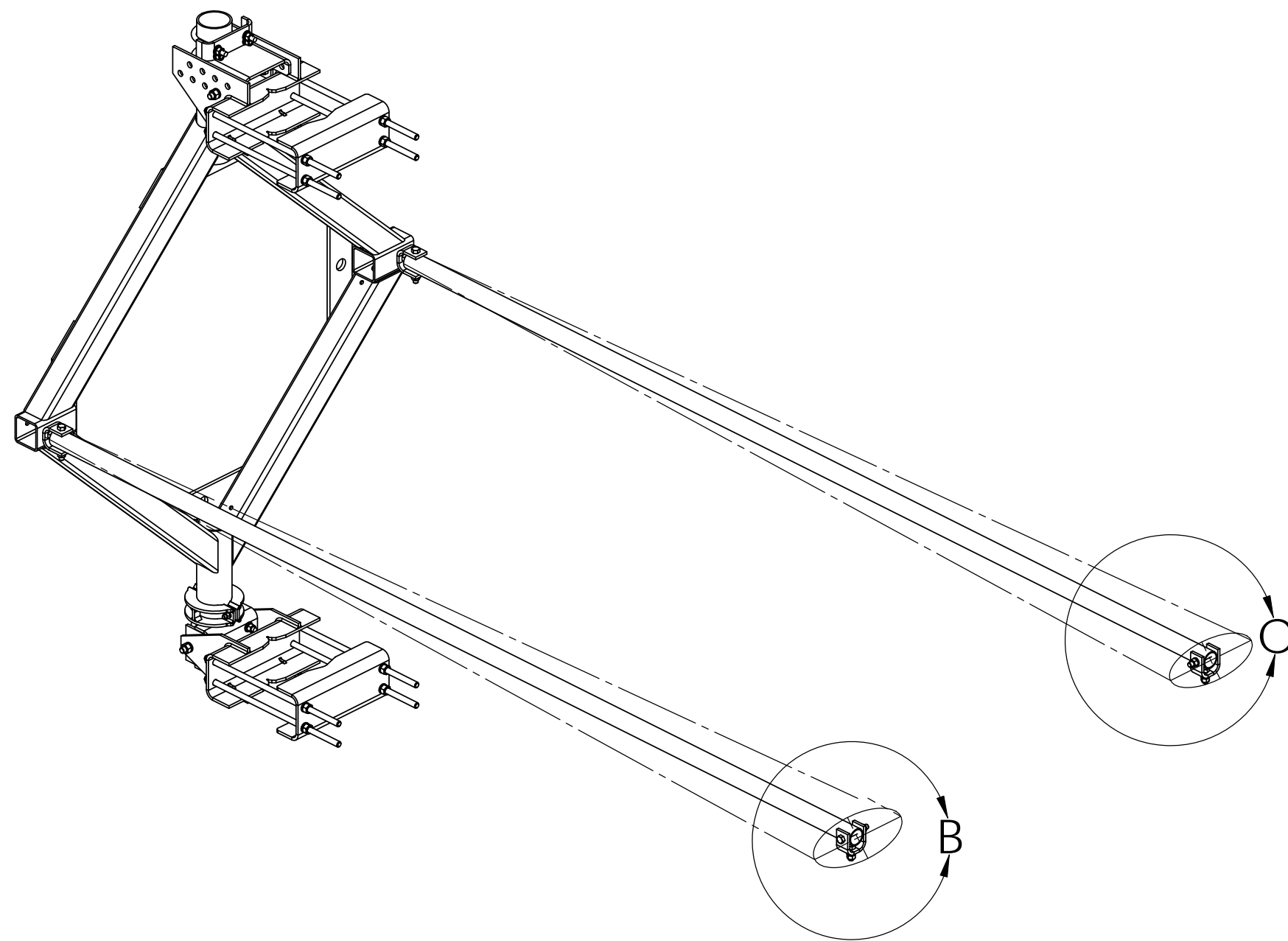
These drawings and specifications are the proprietary property of ANDREW CORPORATION and may be used only for the specific purpose authorized in writing by Andrew Corporation.

ALL DIMENSIONS ARE IN INCHES U.O.S.
TOLERANCES UNLESS OTHERWISE SPECIFIED:
.X = ± .12 ANGLES ±2°
.XX = ± .06 FRACTIONS ±1/32
.XXX = ± .03


REMOVE BURRS AND BREAK EDGES .005

DO NOT SCALE THIS PRINT

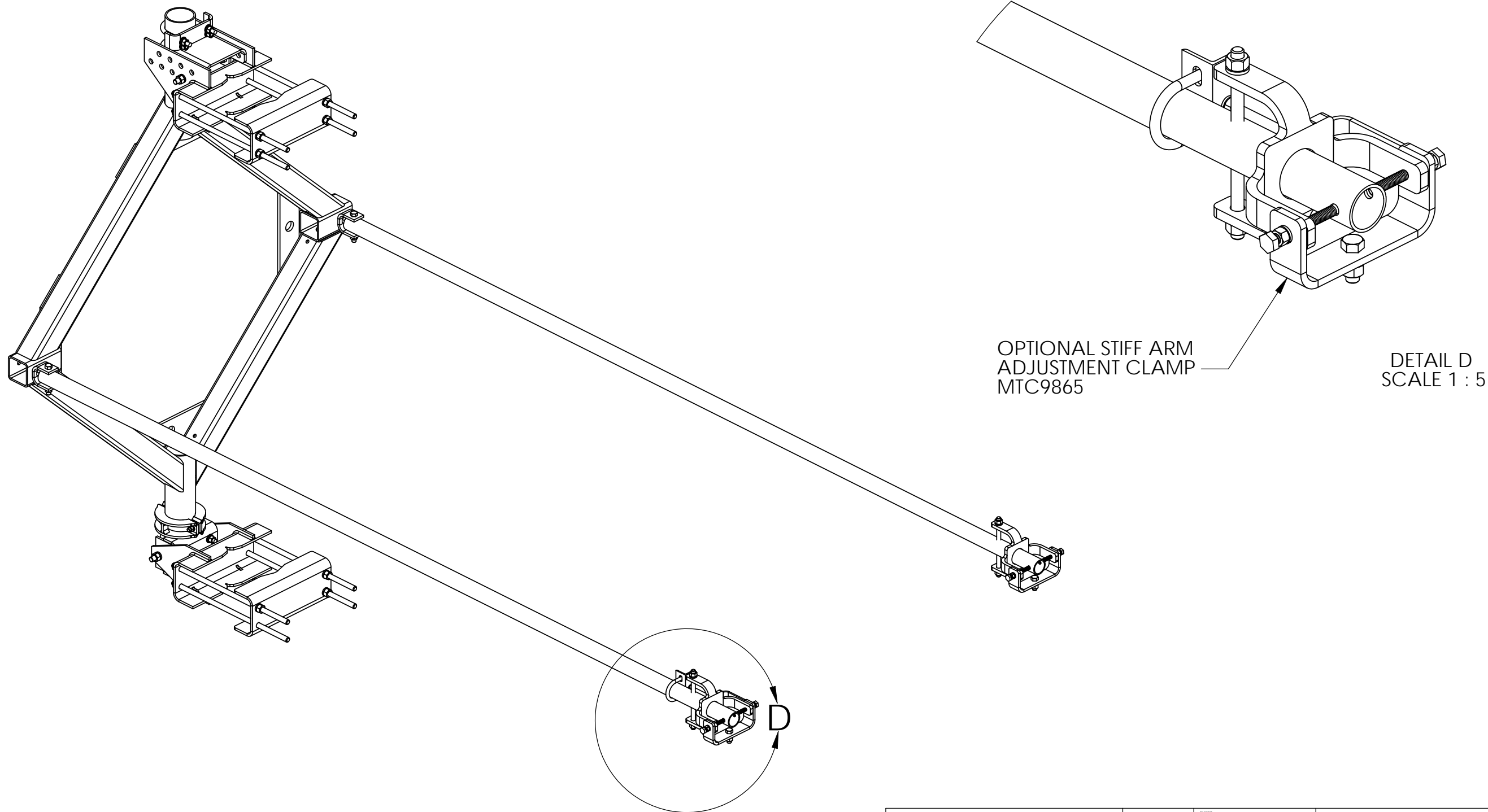
DRAWN BY: MSM	SHEET: 2 of 7	PART NUMBER: DMHD-810
CHECKED BY: TP	SCALE: NTS	DESCRIPTION: HEAVY DUTY DISH MOUNT 8' - 10'
DATE: 1/23/08	MATERIAL: A36	DRAWING TYPE: ASSEMBLY DRAWING
REVISION: F	FINISH: GALV A123	 WESTCHESTER, IL. 60154 U.S.A.
	WEIGHT: 557.00 LBS	



NOTE: Struts should be positioned as close to zero degrees (parallel to the horizon) in elevation as possible when installed. Azimuth positioning should be parallel to the path of the antenna. If this cannot be done, struts may be positioned within the angular limits shown in the illustrations. Typical for both struts.

These drawings and specifications are the proprietary property of ANDREW CORPORATION and may be used only for the specific purpose authorized in writing by Andrew Corporation. ALL DIMENSIONS ARE IN INCHES U.O.S. TOLERANCES UNLESS OTHERWISE SPECIFIED: .X = ± .12 ANGLES ±2° .XX = ± .06 FRACTIONS ±1/32 .XXX = ± .03 REMOVE BURRS AND BREAK EDGES .005 DO NOT SCALE THIS PRINT	DRAWN BY: MSM	SHEET: 3 of 7	PART NUMBER: DMHD-810
	CHECKED BY: TP	SCALE: NTS	DESCRIPTION: HEAVY DUTY DISH MOUNT 8' - 10'
	DATE: 1/23/08	MATERIAL: A36	DRAWING TYPE: ASSEMBLY DRAWING
	REVISION: F	FINISH: GALV A123 WEIGHT: 557.00 LBS	 WESTCHESTER, IL. 60154 U.S.A.

OPTIONAL EQUIPMENT



OPTIONAL STIFF ARM
ADJUSTMENT CLAMP
MTC9865

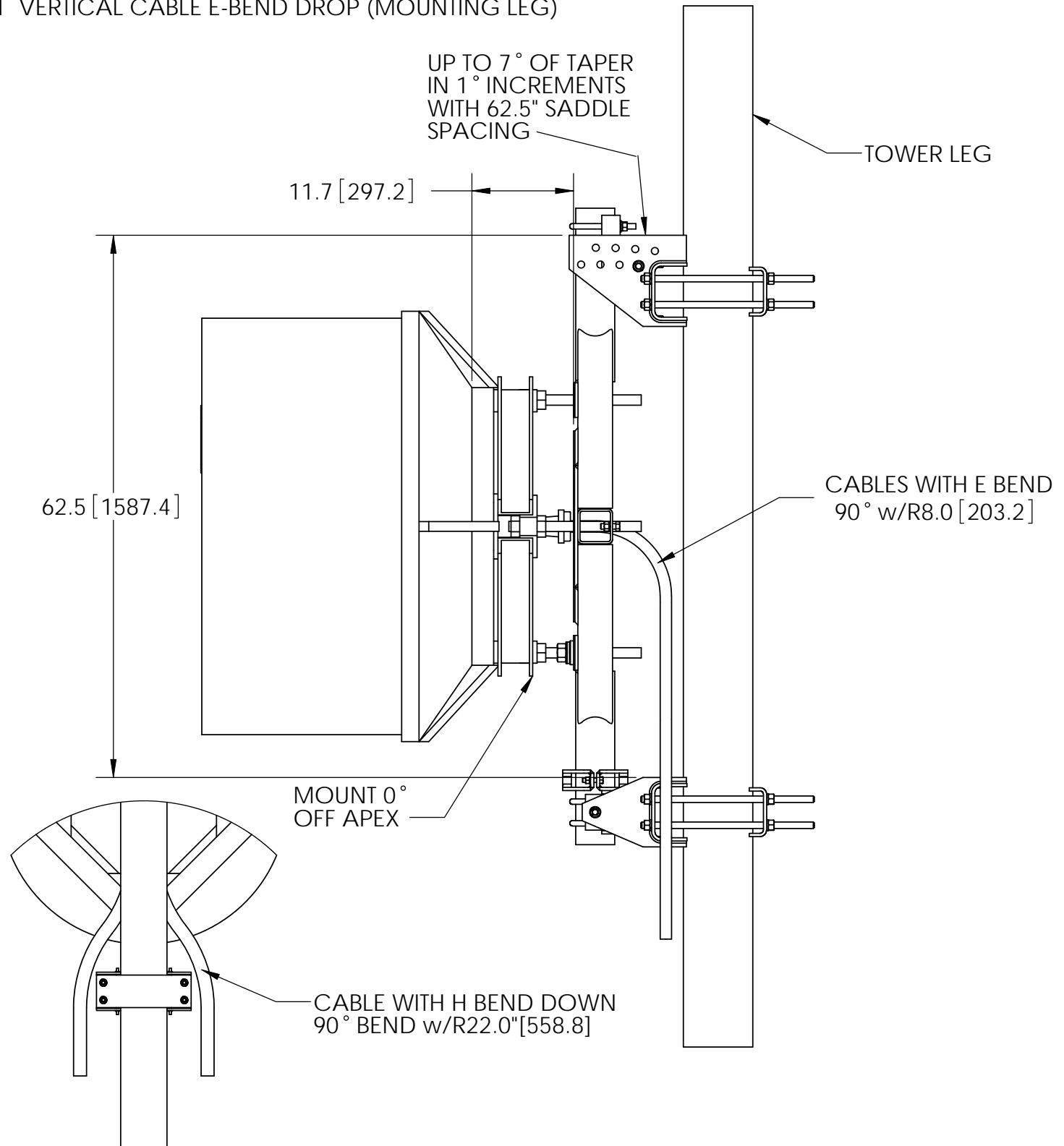
DETAIL D
SCALE 1 : 5

<p>These drawings and specifications are the proprietary property of ANDREW CORPORATION and may be used only for the specific purpose authorized in writing by Andrew Corporation.</p> <p>ALL DIMENSIONS ARE IN INCHES U.O.S. TOLERANCES UNLESS OTHERWISE SPECIFIED:</p> <p>.X = ± .12 ANGLES ±2° .XX = ± .06 FRACTIONS ±1/32 .XXX = ± .03</p> <p>REMOVE BURRS AND BREAK EDGES .005</p> <p>DO NOT SCALE THIS PRINT</p>	<p>DRAWN BY: MSM</p>	<p>SHEET: 4 of 7</p>	<p>PART NUMBER: DMHD-810</p>
	<p>CHECKED BY: TP</p>	<p>SCALE: NTS</p>	<p>DESCRIPTION: HEAVY DUTY DISH MOUNT 8' - 10'</p>
	<p>DATE: 1/23/08</p>	<p>MATERIAL: A36</p>	<p>DRAWING TYPE: ASSEMBLY DRAWING</p>
	<p>REVISION: F</p>	<p>FINISH: GALV A123</p>	<p>WEIGHT: 557.00 LBS</p>



WESTCHESTER, IL. 60154
U.S.A.

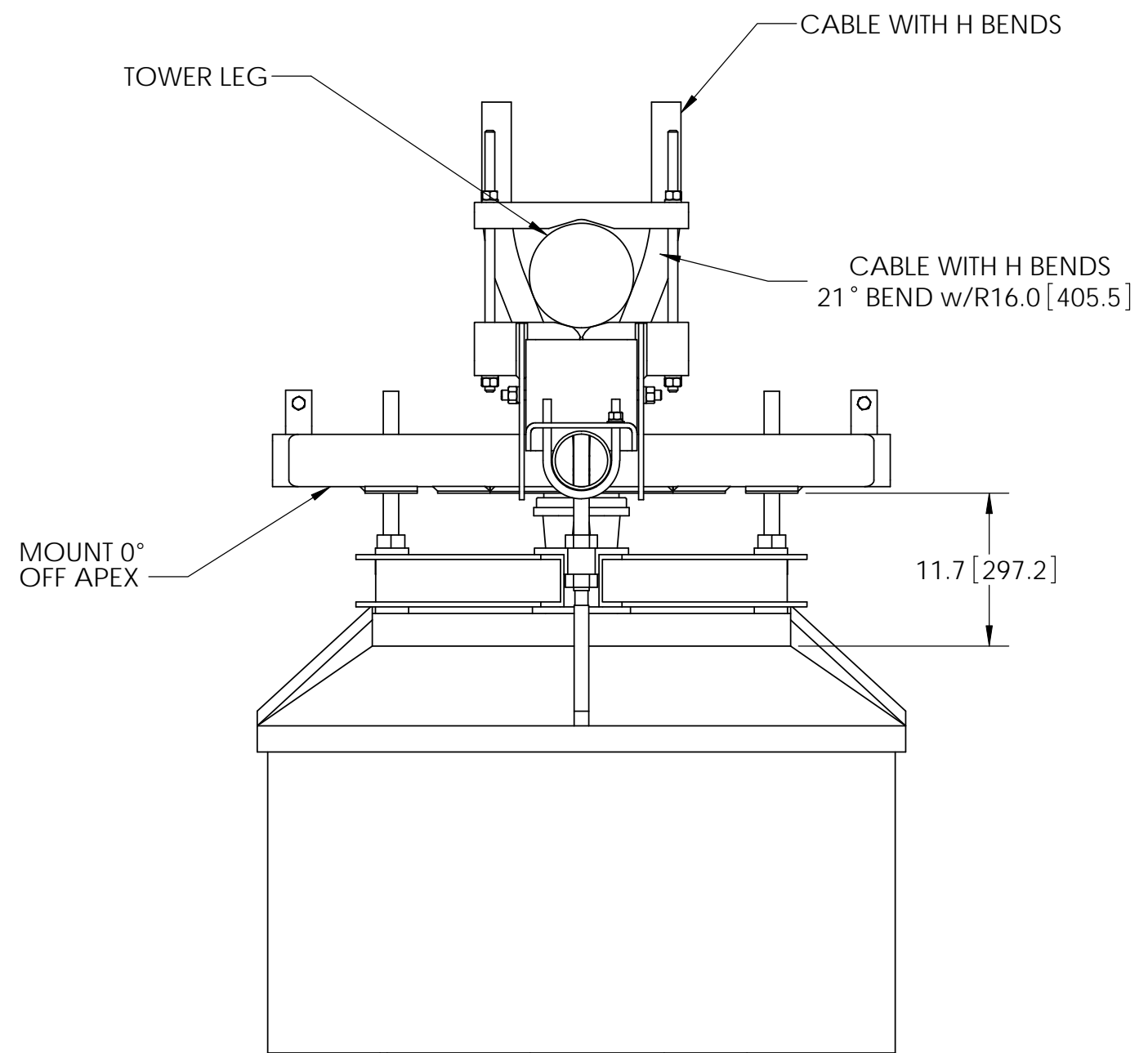
#1 VERTICAL CABLE E-BEND DROP (MOUNTING LEG)




- NOTES:
1. ALL METRIC DIMENSIONS ARE IN BRACKETS.
 2. IN PRACTICAL APPLICATIONS THE CABLE BENDS WILL PERFORM DIFFERENTLY DEPENDING ON LOADS AND ENVIRONMENT.
 3. ALL VIEWS SHOWN WITH S-SERIES SHIELDED ANTENNA(4FT).
 4. ALL VIEWS USE EW52 CABLE WITH STANDARD CABLE TOLERANCES.

REVISIONS				
REV.	ZONE	DESCRIPTION	BY	DATE
A		INITIAL RELEASE	MSM	10/03/08

#2 DIRECT APEX MOUNT WITH HORIZONTAL H-BEND TO BACK LEGS

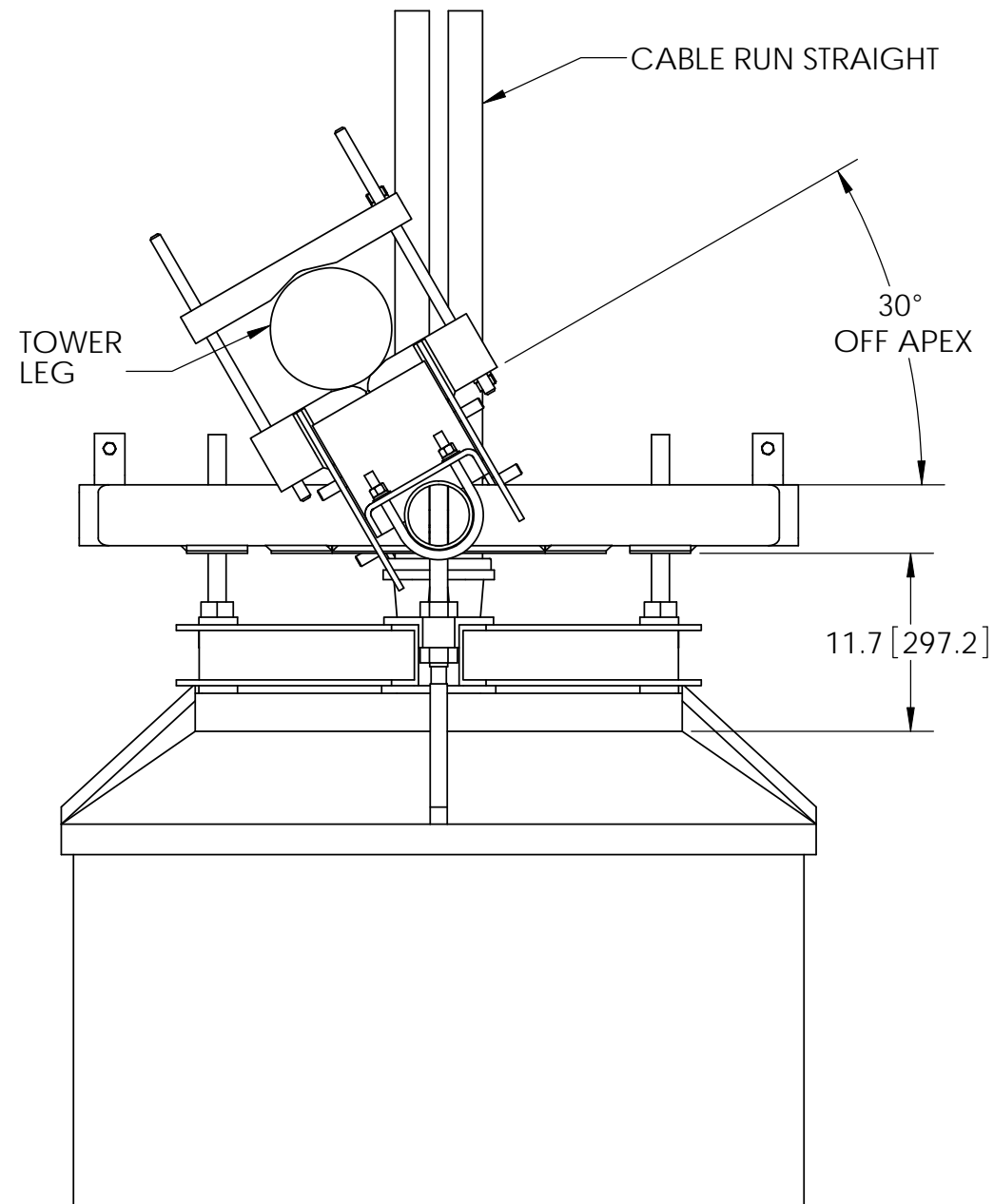


These drawings and specifications are the proprietary property of ANDREW CORPORATION and may be used only for the specific purpose authorized in writing by Andrew Corporation. ALL DIMENSIONS ARE IN INCHES U.O.S. TOLERANCES UNLESS OTHERWISE SPECIFIED: .X = ± .12 ANGLES ±2° .XX = ± .06 FRACTIONS ±1/32 .XXX = ± .03 REMOVE BURRS AND BREAK EDGES .005 DO NOT SCALE THIS PRINT	DRAWN BY: MSM	SHEET: 5 of 7	PART NUMBER: DMHD46 WITH DISH
	CHECKED BY: TP	SCALE: NTS	DESCRIPTION: HEAVY DUTY DISH MOUNT
	DATE: 10/03/08	MATERIAL: A36, A53	DRAWING TYPE: ASSEMBLY DRAWING
	REVISION: A	FINISH: GALV A123	WEIGHT:

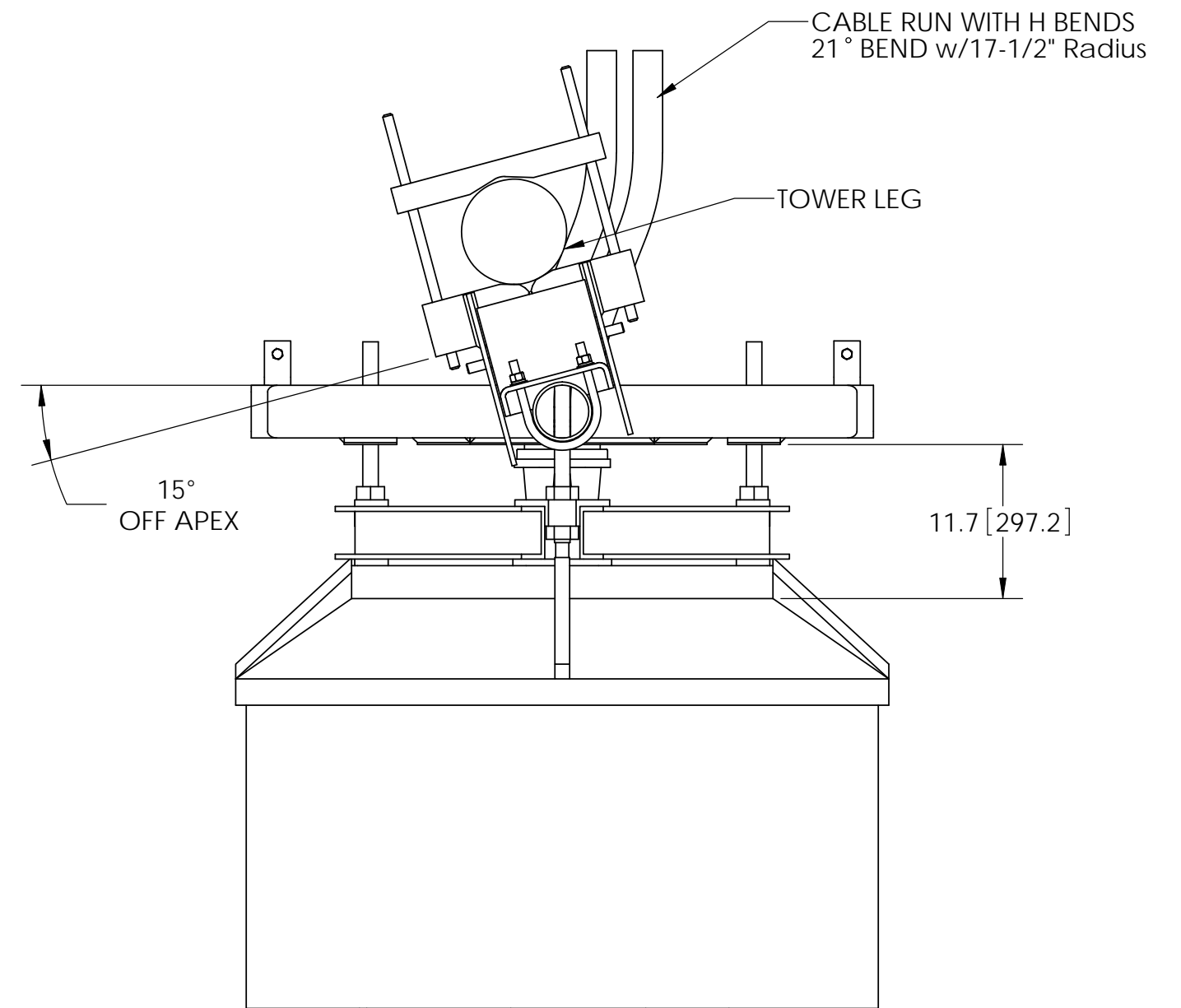



WESTCHESTER, IL. 60154
U.S.A.

#3 HORIZONTAL CABLE RUN WITH NO BENDS (30° OFF APEX)

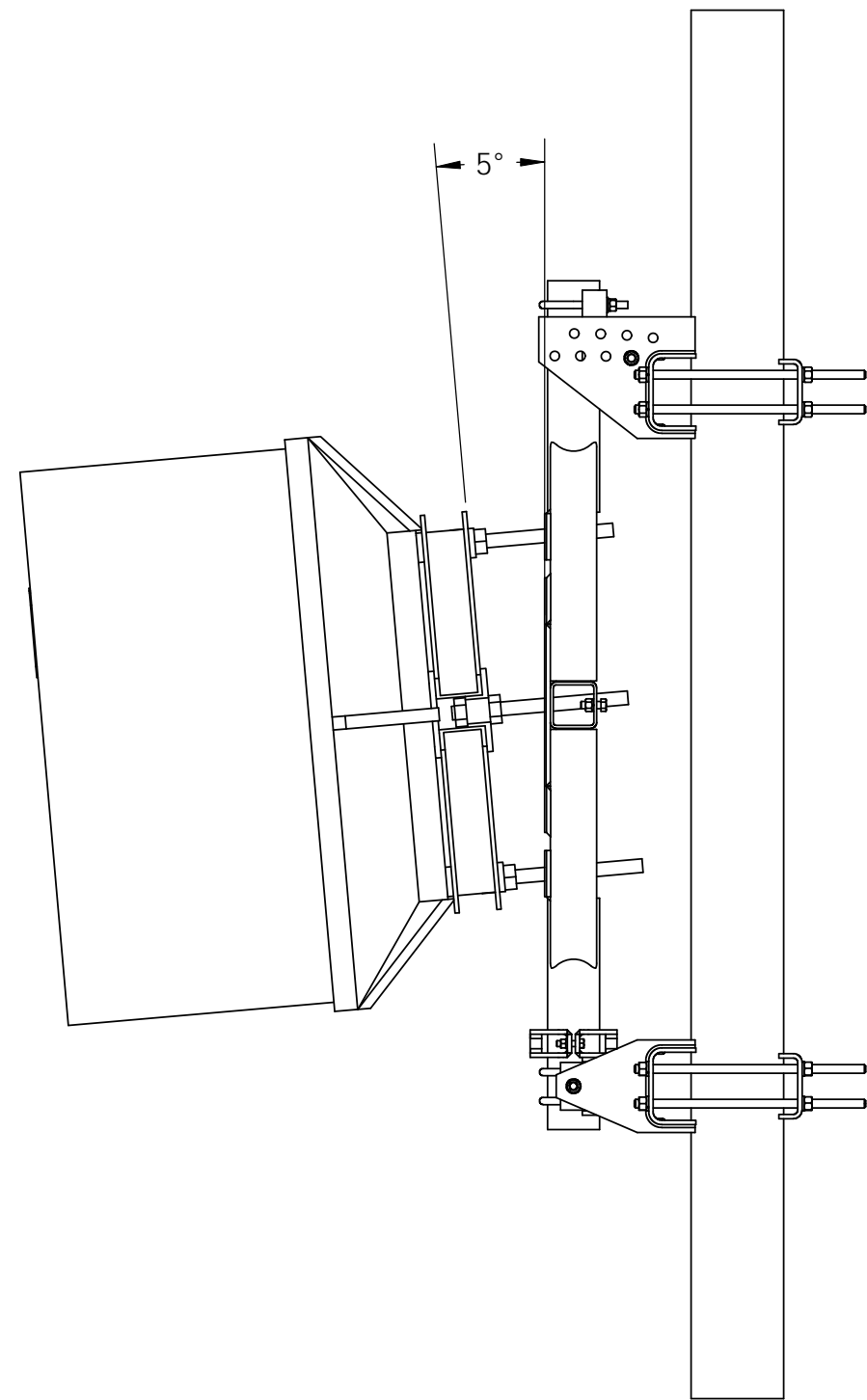


#4 HORIZONTAL CABLE RUN WITH BENDS (15° OFF APEX)

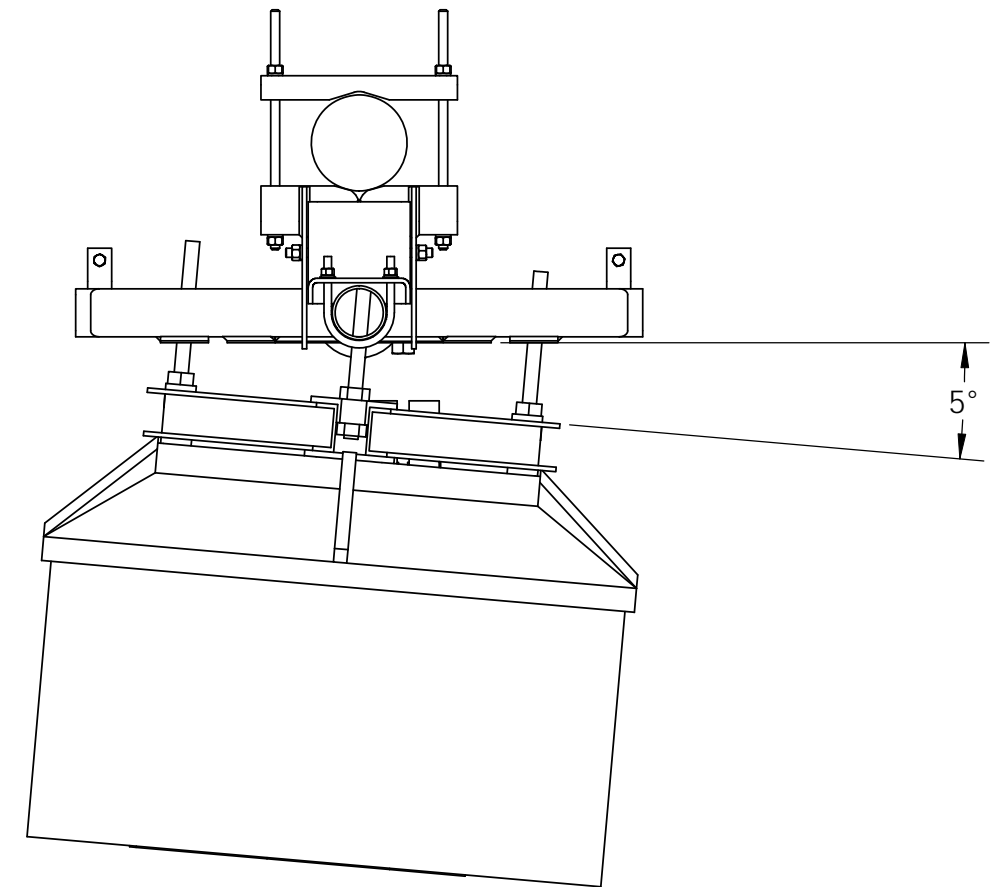



<p>These drawings and specifications are the proprietary property of ANDREW CORPORATION and may be used only for the specific purpose authorized in writing by Andrew Corporation.</p> <p>ALL DIMENSIONS ARE IN INCHES U.O.S. TOLERANCES UNLESS OTHERWISE SPECIFIED:</p> <p>.X = ± .12 ANGLES ±2° .XX = ± .06 FRACTIONS ±1/32 .XXX = ± .03</p> <p>REMOVE BURRS AND BREAK EDGES .005</p> <p>DO NOT SCALE THIS PRINT</p>	DRAWN BY: MSM	SHEET: 6 of 7	PART NUMBER: DMHD46 WITH DISH
	CHECKED BY: TP	SCALE: NTS	DESCRIPTION: HEAVY DUTY DISH MOUNT
	DATE: 10/03/08	MATERIAL: A36, A53	DRAWING TYPE: ASSEMBLY DRAWING
	REVISION: A	FINISH: GALV A123	 WESTCHESTER, IL. 60154 U.S.A.

#5 VERTICAL PLANE ADJUSTMENT +/- 5°



#6 HORIZONTAL PLANE ADJUSTMENT +/- 5°



<p>These drawings and specifications are the proprietary property of ANDREW CORPORATION and may be used only for the specific purpose authorized in writing by Andrew Corporation.</p> <p>ALL DIMENSIONS ARE IN INCHES U.O.S. TOLERANCES UNLESS OTHERWISE SPECIFIED:</p> <p>.X = ± .12 ANGLES ±2° .XX = ± .06 FRACTIONS ±1/32 .XXX = ± .03</p> <p>REMOVE BURRS AND BREAK EDGES .005</p> <p>DO NOT SCALE THIS PRINT</p>	DRAWN BY: MSM	SHEET: 7 of 7	PART NUMBER: DMHD46 WITH DISH
	CHECKED BY: TP	SCALE: NTS	DESCRIPTION: HEAVY DUTY DISH MOUNT
	DATE: 10/03/08	MATERIAL: A36, A53	DRAWING TYPE: ASSEMBLY DRAWING
	REVISION: A	FINISH: GALV A123	 WESTCHESTER, IL. 60154 U.S.A.