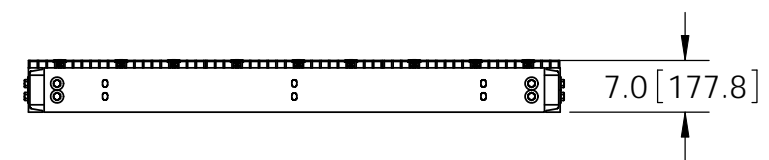
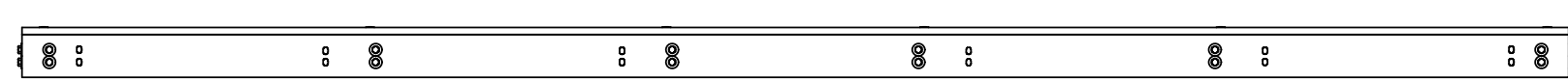
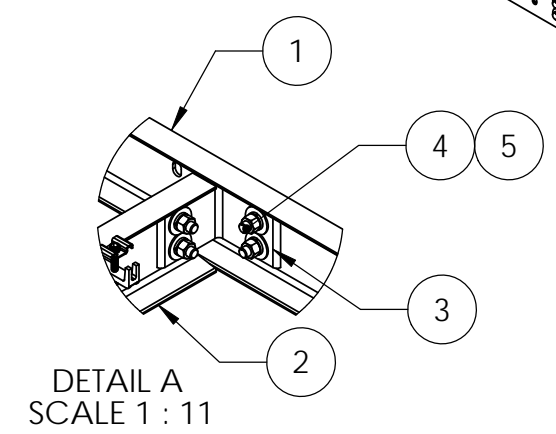
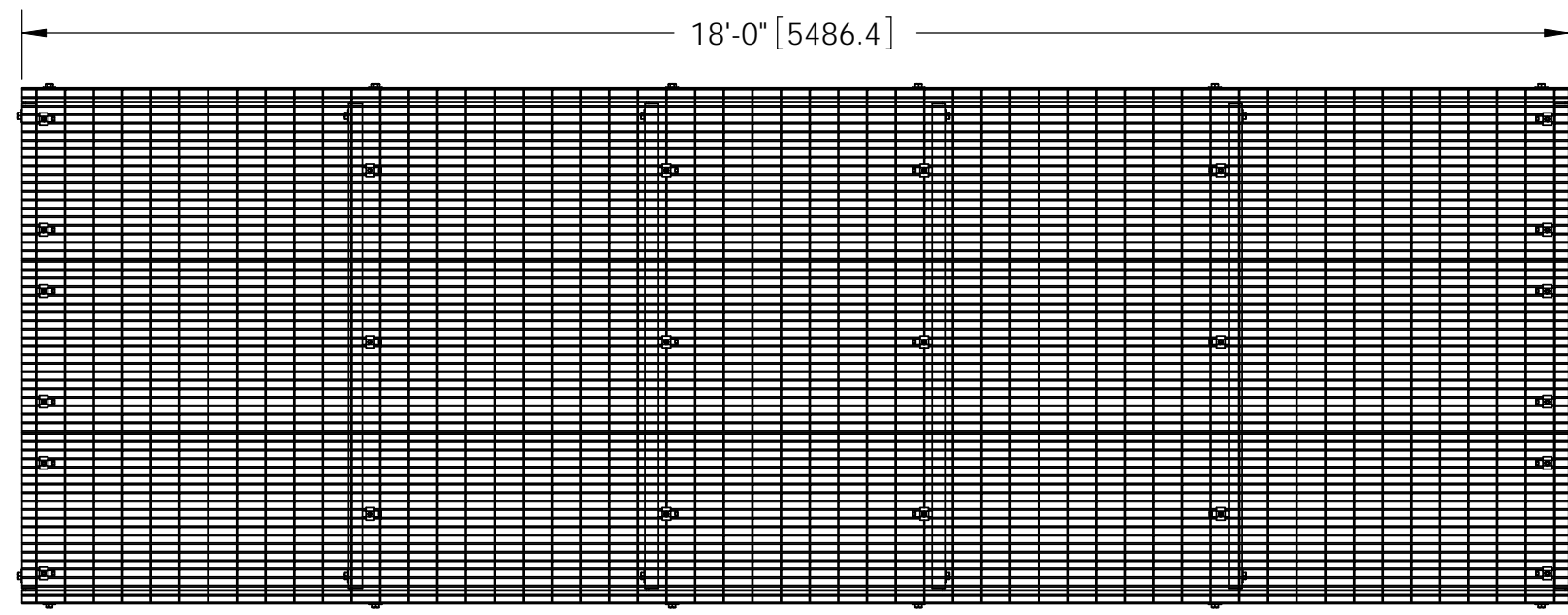
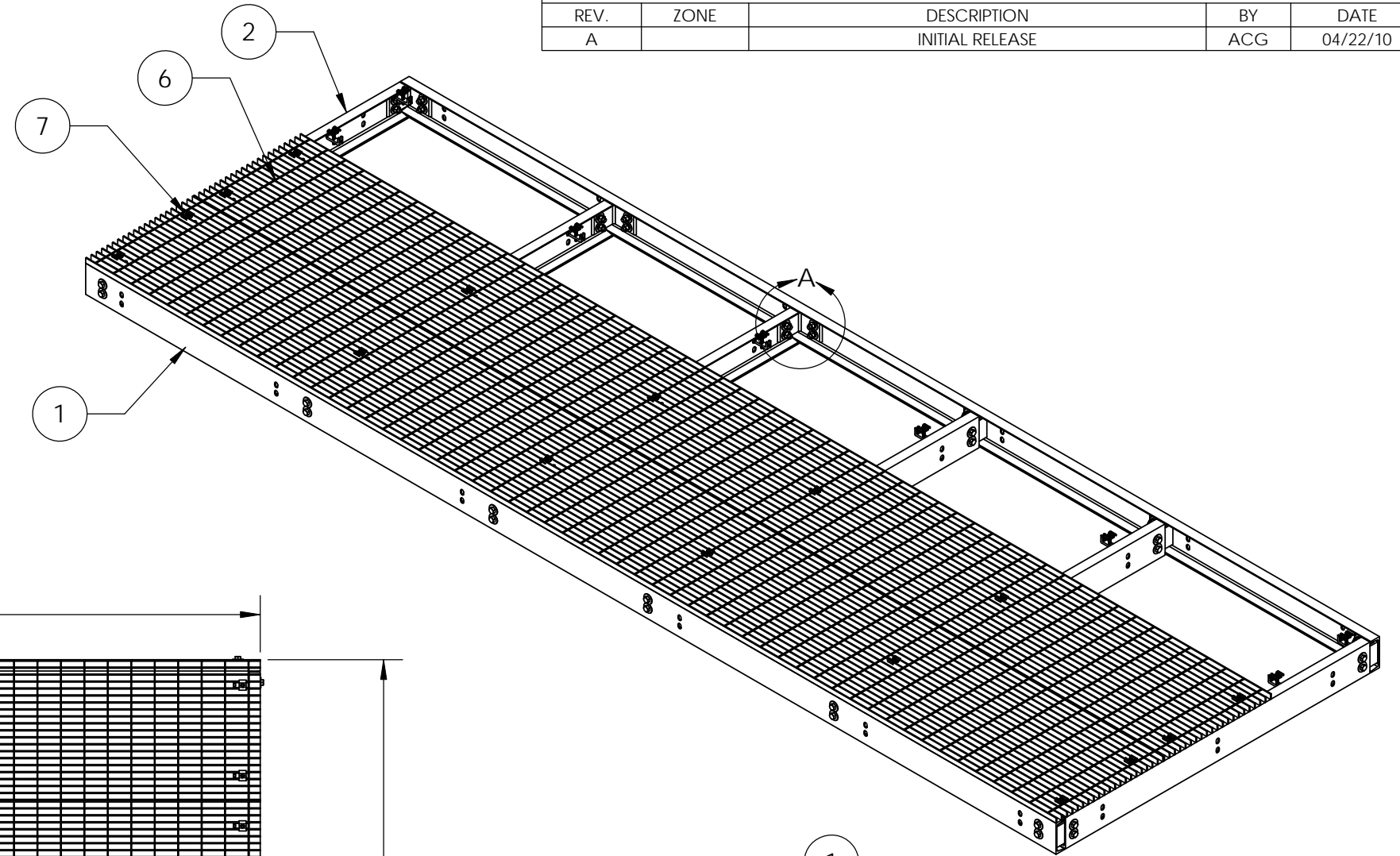



ITEM	PART NO.	DESCRIPTION	QTY.	WEIGHT
1	EQP6C041801	18' Platform Channel Side	2	145.92 LBS
2	MTCPCC06.01	6' Platform Channel Center	6	46.23 LBS
3	MTCP.01	6" Channel Adapter Angle	12	3.18 LBS
4	GB-05205	5/8" X 2" GALV BOLT KIT	48	0.04 LBS
5	GWF-05	5/8" GALV FLAT WASHER	96	0.03 LBS
6	MTC7902101802	24" X 18' BAR GRATING	3	245.47 LBS
7	GCM03	GRATING CLIP	24	0.39 LBS

REVISIONS				
REV.	ZONE	DESCRIPTION	BY	DATE
A		INITIAL RELEASE	ACG	04/22/10



NOTES:
 1. ALL METRIC DIMENSIONS ARE IN BRACKETS.
 2. GRATING REMOVED FOR CLARITY.

<small>These drawings and specifications are the proprietary property of ANDREW CORPORATION and may be used only for the specific purpose authorized in writing by Andrew Corporation.</small> ALL DIMENSIONS ARE IN INCHES U.O.S. TOLERANCES UNLESS OTHERWISE SPECIFIED: .X = ± .06 ANGLES ±2° .XX = ± .03 FRACTIONS ±1/32 .XXX = ± .010 REMOVE BURRS AND BREAK EDGES .005 DO NOT SCALE THIS PRINT	DRAWN BY: ACG	SHEET: 1 of 1	PART NUMBER: EQ-P6C0618-B
	CHECKED BY: TP	SCALE: NTS	DESCRIPTION: 6' X 18' Equipment Platform 6" Channel
	DATE: 04/22/10	MATERIAL: A36, A568, A529	DRAWING TYPE: ASSEMBLY DRAWING
	REVISION: A	FINISH: GALV A123	 WESTCHESTER, IL. 60154 U.S.A.
	WEIGHT: 1355.86 LBS		