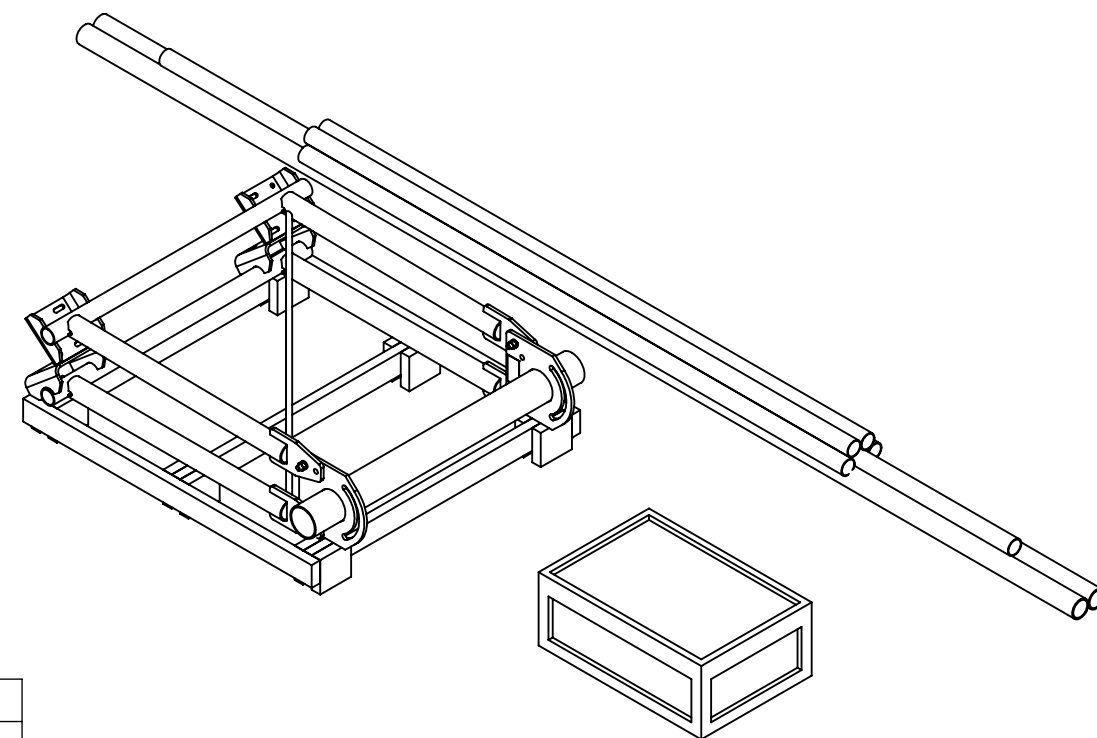


ITEM	PART NO.	DESCRIPTION	QTY.	WEIGHT	NOTE NO.
1	SFG23PK	SFG23 FRAME / HK	1	245.72 LBS	
2	SFG23xxxxSB	STEEL BUNDLE FOR SFG23HD-14-4-96	1	-	3
3	SFG23HDHK	HARDWARE KIT FOR SFG23HD SERIES	1	213.12 LBS	



REVISIONS				
REV.	ECN	DESCRIPTION	BY	DATE
A	8000012830	INITIAL RELEASE	MSM	02/16/16
B	8000018893	ADDED DIAGONAL BRACE RODS	DRR	01/05/17
C	8000024655	ADJUSTED WEIGHT OF SFG23PK AND ALL TOTALS	DRR	07/10/17



### SFG23HD SERIES TABLE



PART NO.	DESCRIPTION	PIPE BUNDLE	TOTAL WEIGHT
SFG23HD-10-4-96	SECTOR FRAME 10'-8" FACE, (4) 96" ANTENNA PIPE	SFG23HD10496SB	661 LBS
SFG23HD-10-4-126	SECTOR FRAME 10'-8" FACE, (4) 126" ANTENNA PIPE	SFG23HD104126SB	690 LBS
SFG23HD-12-4-96	SECTOR FRAME 12'-8" FACE, (4) 96" ANTENNA PIPE	SFG23HD12496SB	680 LBS
SFG23HD-12-4-126	SECTOR FRAME 12'-8" FACE, (4) 126" ANTENNA PIPE	SFG23HD124126SB	710 LBS
SFG23HD-14-4-96	SECTOR FRAME 14'-8" FACE, (4) 96" ANTENNA PIPE	SFG23HD14496SB	707 LBS
SFG23HD-14-4-126	SECTOR FRAME 14'-8" FACE, (4) 126" ANTENNA PIPE	SFG23HD144126SB	737 LBS
SFG23HD-10-3-96	SECTOR FRAME 10'-8" FACE, (3) 96" ANTENNA PIPE	SFG23HD10396SB	630 LBS
SFG23HD-10-3-126	SECTOR FRAME 10'-8" FACE, (3) 126" ANTENNA PIPE	SFG23HD103126SB	652 LBS
SFG23HD-12-3-96	SECTOR FRAME 12'-8" FACE, (3) 96" ANTENNA PIPE	SFG23HD12396SB	649 LBS
SFG23HD-12-3-126	SECTOR FRAME 12'-8" FACE, (3) 126" ANTENNA PIPE	SFG23HD123126SB	672 LBS
SFG23HD-14-3-96	SECTOR FRAME 14'-8" FACE, (3) 96" ANTENNA PIPE	SFG23HD14396SB	676 LBS
SFG23HD-14-3-126	SECTOR FRAME 14'-8" FACE, (3) 126" ANTENNA PIPE	SFG23HD143126SB	698 LBS
SFG23HD-10-B	SECTOR FRAME 10'-8" FACE, NO ANTENNA PIPE	SFG23HD10SB	578 LBS
SFG23HD-12-B	SECTOR FRAME 12'-8" FACE, NO ANTENNA PIPE	SFG23HD12SB	597 LBS
SFG23HD-14-B	SECTOR FRAME 14'-8" FACE, NO ANTENNA PIPE	SFG23HD14SB	623 LBS

#### NOTES:

- CUSTOMER ASSEMBLY SHEETS 2-8.
- FITS TOWERS LEGS UP TO 8" OD, 8" ANGLE 60°, AND 6" ANGLE 90°.
- SEE SFG23HD TABLE(SHEET 1) FOR CORRECT PIPE BUNDLE.

PATENT PENDING

These drawings and specifications are the proprietary property of CommScope Inc. and may be used only for the specific purpose authorized in writing by CommScope Inc.		DRAWN BY: MSM	SHEET: 1 of 8	PART NUMBER: SFG23HD SERIES
ALL DIMENSIONS ARE IN INCHES U.O.S. TOLERANCES UNLESS OTHERWISE SPECIFIED: .X = ± .12 ANGLES ±2' .XX = ± .06 FRACTIONS ±1/32 .XXX = ± .03		CHECKED BY: TP	SCALE: NTS	DESCRIPTION: SECTOR FRAME, SFG23HD SERIES
REMOVE BURRS AND BREAK EDGES .005		DATE: 02/16/16	MATERIAL: SEE TABLE	DRAWING TYPE: ASSEMBLY DRAWING
DO NOT SCALE THIS PRINT		REVISION: C	FINISH: N/A	 Hickory, NC 28602 U.S.A.
			WEIGHT: N/A	

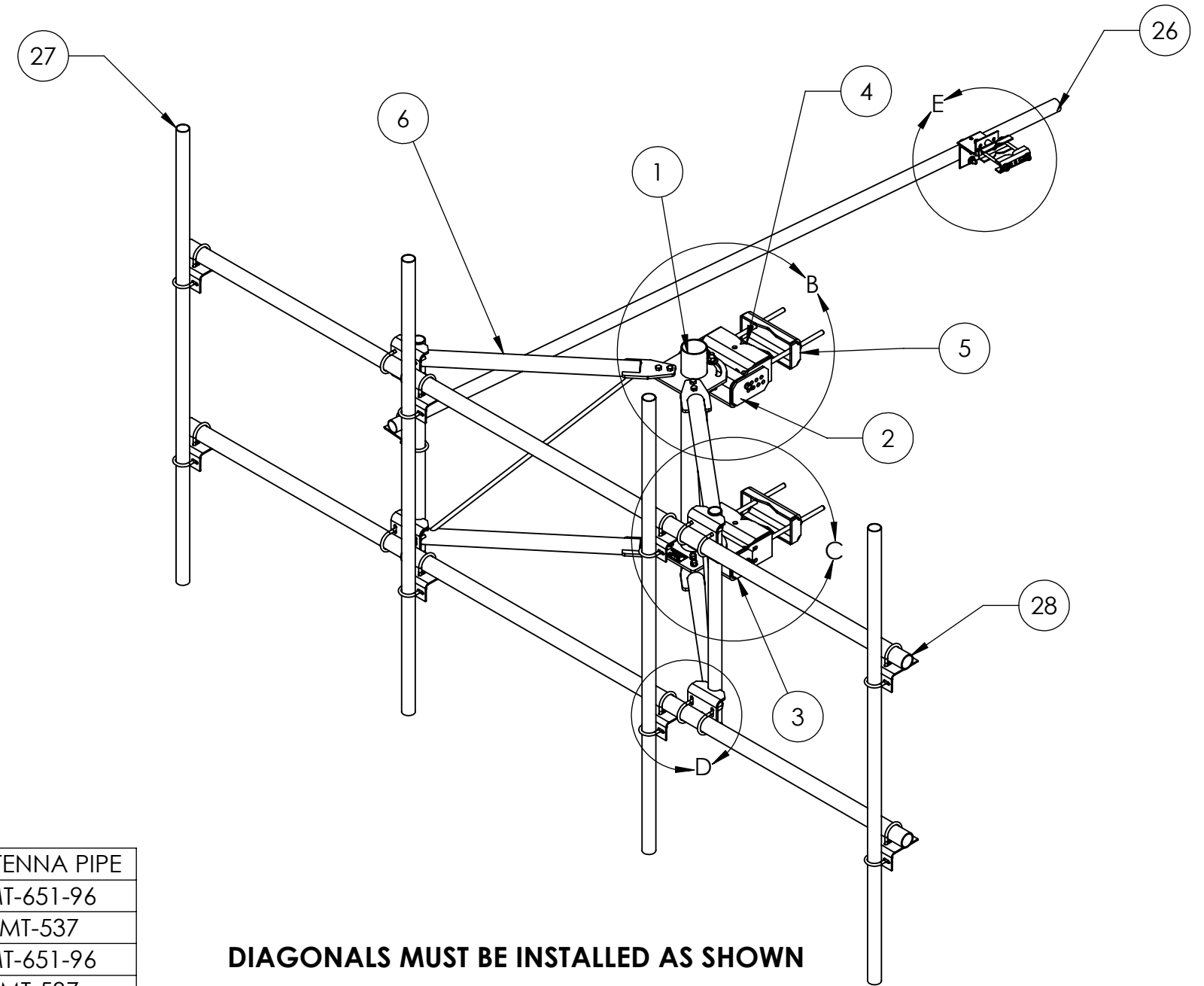
ITEM	PART NO.	DESCRIPTION	QTY.	WEIGHT	NOTE NO.
1	SFG2302	ARM MOUNT WELDMENT	1	59.80 LBS	
2	SFG2303	TOP TAPER BRACKET	1	22.61 LBS	
3	SFG2304	LOWER TAPER BRACKET	1	19.17 LBS	
4	SFG2305	TOWER SADDLE FRONT CLAMP	2	22.85 LBS	
5	SFG2306	BACK TOWER CLAMP WELDMENT	2	12.70 LBS	
6	SFG2367L	SECTOR FRAME ARM LEFT WELDMENT	1	81.38 LBS	
7	SFG2367R	SECTOR FRAME ARM RIGHT WELDMENT	1	81.38 LBS	
8	SAB01	FORMED CLAMP	2	1.35 LBS	
9	XAU01	Angle BRK	8	3.59 LBS	
10	XA2020.01	CROSS OVER ANGLE	3	2.65 LBS	
11	OS15034	3/4" X 1-1/2" OFFSET COLLAR	1	0.14 LBS	
12	MT38420	3/4" X 20" GALV THREADED ROD	4	2.49 LBS	
13	GWF-06	3/4" GALV FLAT WASHER	10	0.10 LBS	
14	GWL-06	3/4" GALV LOCK WASHER	8	0.04 LBS	
15	GN-06	3/4" GALV HEX NUT	12	0.15 LBS	
16	GUB-4240	1/2" X 2-1/2" X 4" GALV U-BOLT	11	0.56 LBS	
17	GUB-4352	1/2" X 3" X 5-1/4" GALV U-BOLT	16	0.71 LBS	
18	MT-379-8	1/2" X 8" GALV THREADED ROD	2	0.44 LBS	
19	GWF-04	1/2" GALV FLAT WASHER	4	0.03 LBS	
20	GWL-04	1/2" GALV LOCK WASHER	4	0.01 LBS	
21	GN-04	1/2" GALV HEX NUT	4	0.04 LBS	
22	GUB-5456	5/8" X 4-5/8" X 6 1/2" GALV U-BOLT	2	1.42 LBS	
23	GB-0520A	5/8" X 2" GALV BOLT KIT (A325)	4	0.26 LBS	
24	GB-0624A	3/4" X 2-1/2" GALV BOLT KIT (A325)	2	0.47 LBS	
25	GB-05225	5/8" X 2-1/4" GALV BOLT KIT	8	0.28 LBS	
26	MT-651-150	PIPE, 2-3/8"OD X 150" GALV	1	36.01 LBS	
27	MT-xxxx	Ø 2.375" OD PIPE	-	-	1
28	SFG23xxxHD	PIPE 2-7/8" OD X SCH 40	2	-	1
29	GB-0414A	1/2" X 1-1/2" GALV BOLT KIT (A325)	1	0.13 LBS	
30	GB-0426A	1/2" X 2-3/4" GALV BOLT KIT (A325)	1	0.20 LBS	

### SFG23HD SERIES PIPE CHART

PART NO.	DESCRIPTION	FACE PIPE	ANTENNA PIPE
SFG23HD-10-x-96	SECTOR FRAME 10'-8" FACE, 96" ANTENNA PIPE	SFG23126HD	MT-651-96
SFG23HD-10-x-126	SECTOR FRAME 10'-8" FACE, 126" ANTENNA PIPE	SFG23126HD	MT-537
SFG23HD-12-x-96	SECTOR FRAME 12'-8" FACE, 96" ANTENNA PIPE	MT-546-150	MT-651-96
SFG23HD-12-x-126	SECTOR FRAME 12'-8" FACE, 126" ANTENNA PIPE	MT-546-150	MT-537
SFG23HD-14-x-96	SECTOR FRAME 14'-8" FACE, 96" ANTENNA PIPE	SFG23174HD	MT-651-96
SFG23HD-14-x-126	SECTOR FRAME 14'-8" FACE, 126" ANTENNA PIPE	SFG23174HD	MT-537

NOTES:  
1. SEE PIPE CHART.  
2. x IN PART NO. OF SFG23HD SERIES PIPE CHART EQUALS NUMBER OF ANTENNA PIPES PER MOUNT.

## SFG23HD-12-4-96 SHOWN



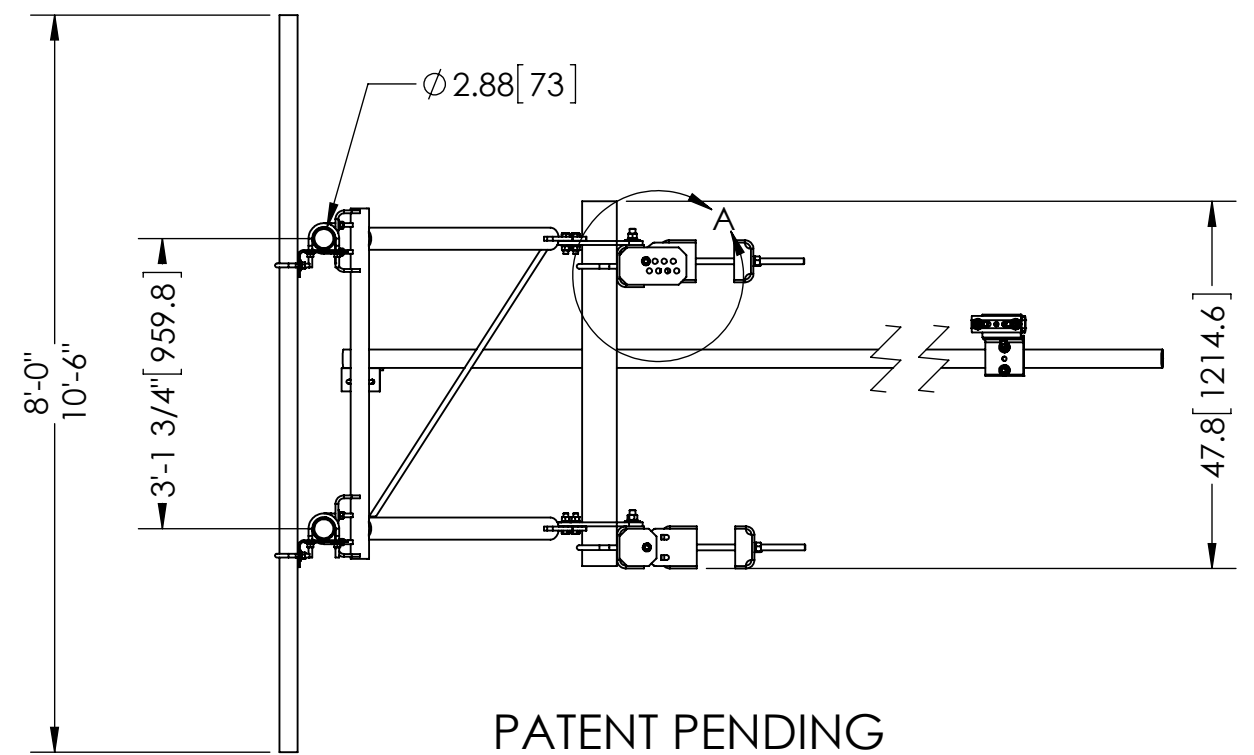
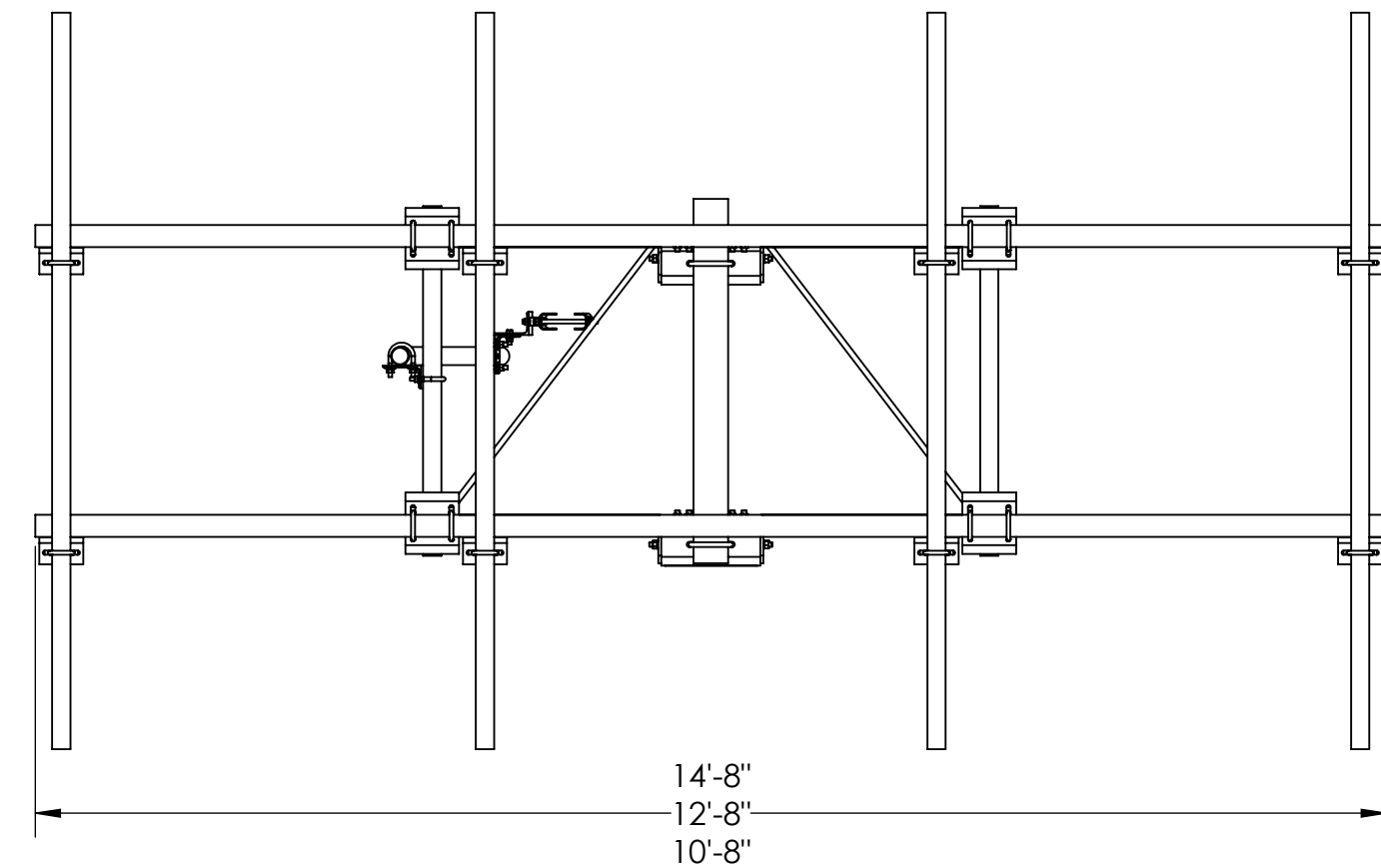
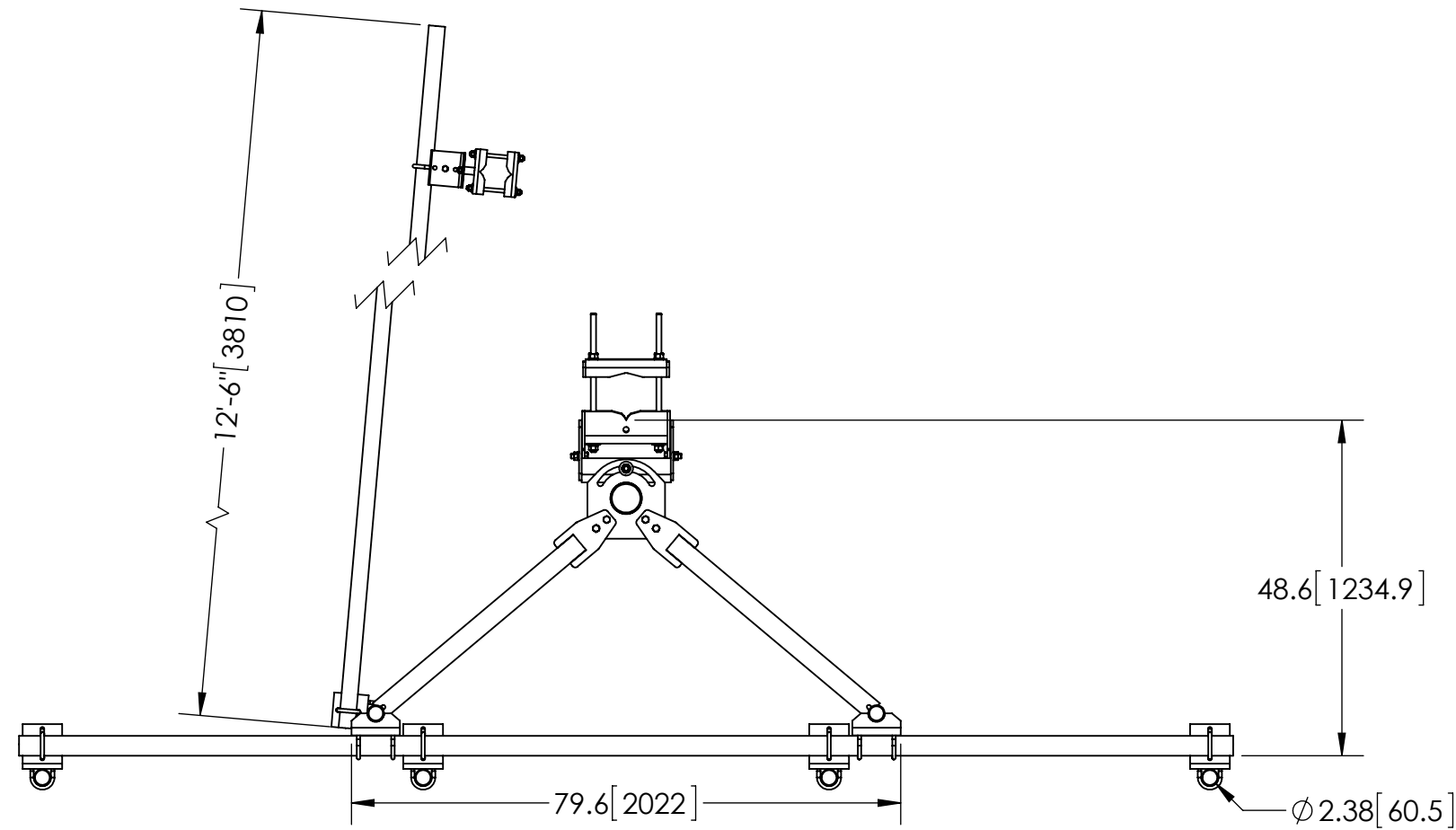
**DIAGONALS MUST BE INSTALLED AS SHOWN**

PATENT PENDING

<small>These drawings and specifications are the proprietary property of CommScope Inc. and may be used only for the specific purpose authorized in writing by CommScope Inc.</small>  ALL DIMENSIONS ARE IN INCHES U.O.S. TOLERANCES UNLESS OTHERWISE SPECIFIED: .X = ± .12      ANGLES      ±2° .XX = ± .06      FRACTIONS      ±1/32 .XXX = ± .03  REMOVE BURRS AND BREAK EDGES .005  DO NOT SCALE THIS PRINT	DRAWN BY: MSM	SHEET: 2 of 8	PART NUMBER: SFG23HD SERIES
	CHECKED BY: TP	SCALE: NTS	DESCRIPTION:
	DATE: 02/16/16	MATERIAL: A-36, A-500	DRAWING TYPE: ASSEMBLY DRAWING
	REVISION: <b>C</b>	FINISH: GALV A123	 Hickory, NC 28602 U.S.A.
	WEIGHT: N/A		

**SFG23HD-12-4-96  
SHOWN**

**\*DIAGONALS MUST BE INSTALLED AS SHOWN\***



PATENT PENDING

These drawings and specifications are the proprietary property of CommScope Inc. and may be used only for the specific purpose authorized in writing by CommScope Inc.

ALL DIMENSIONS ARE IN INCHES U.S.S.  
TOLERANCES UNLESS OTHERWISE SPECIFIED:  
.X = ± .12 ANGLES ±2°  
.XX = ± .06 FRACTIONS ±1/32  
.XXX = ± .03

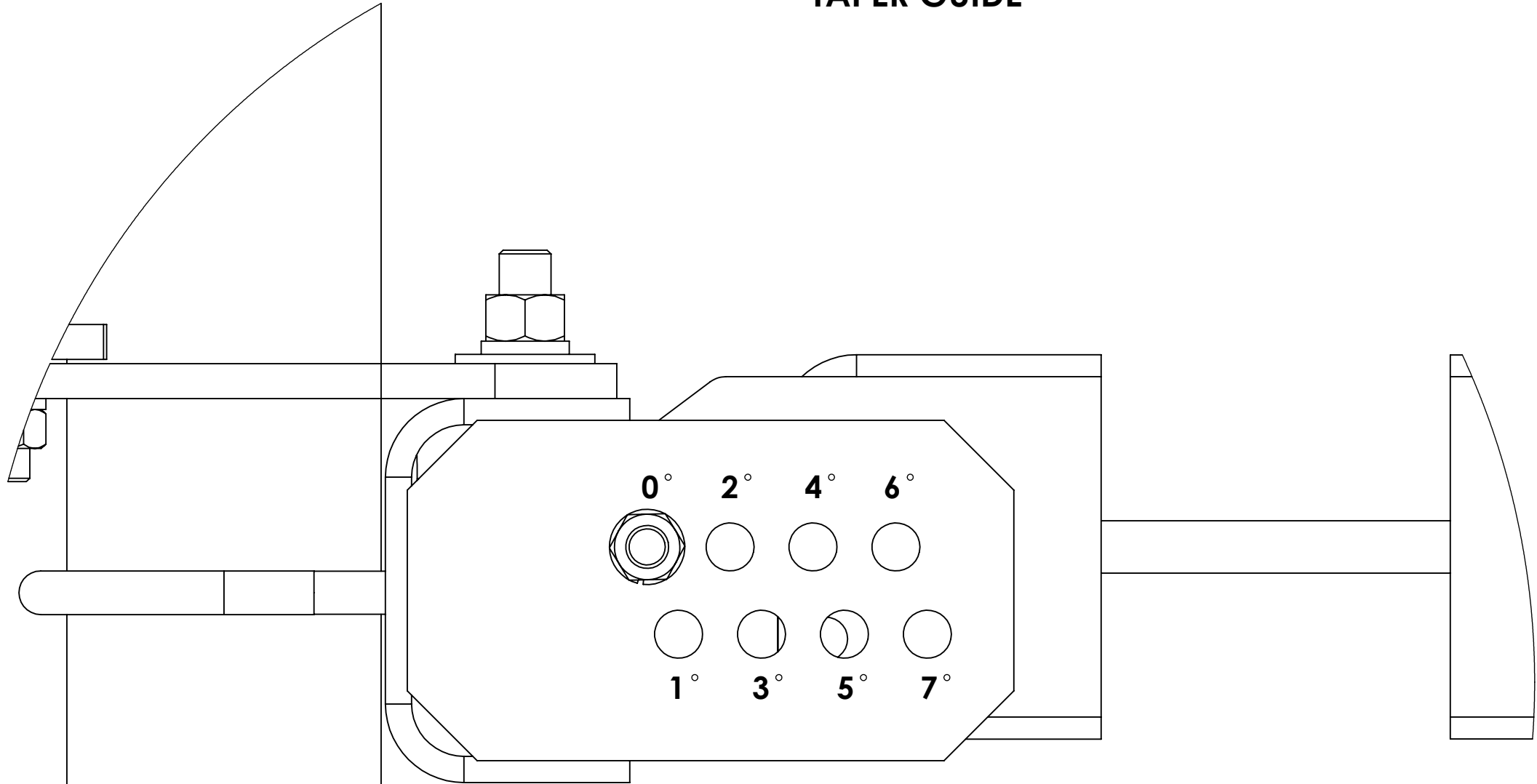
REMOVE BURRS AND BREAK EDGES .005

DO NOT SCALE THIS PRINT

DRAWN BY: MSM	SHEET: 3 of 8	PART NUMBER: SFG23HD SERIES
CHECKED BY: TP	SCALE: NTS	DESCRIPTION:
DATE: 02/16/16	MATERIAL: A-36, A-500	DRAWING TYPE: ASSEMBLY DRAWING
REVISION: <b>C</b>	FINISH: GALV A123	<b>COMMScope®</b> Hickory, NC 28602 U.S.A.
	WEIGHT: N/A	

PART NUMBER: SFG23HD SERIES	
DESCRIPTION:	
DRAWING TYPE: ASSEMBLY DRAWING	
<b>COMMScope®</b> Hickory, NC 28602 U.S.A.	

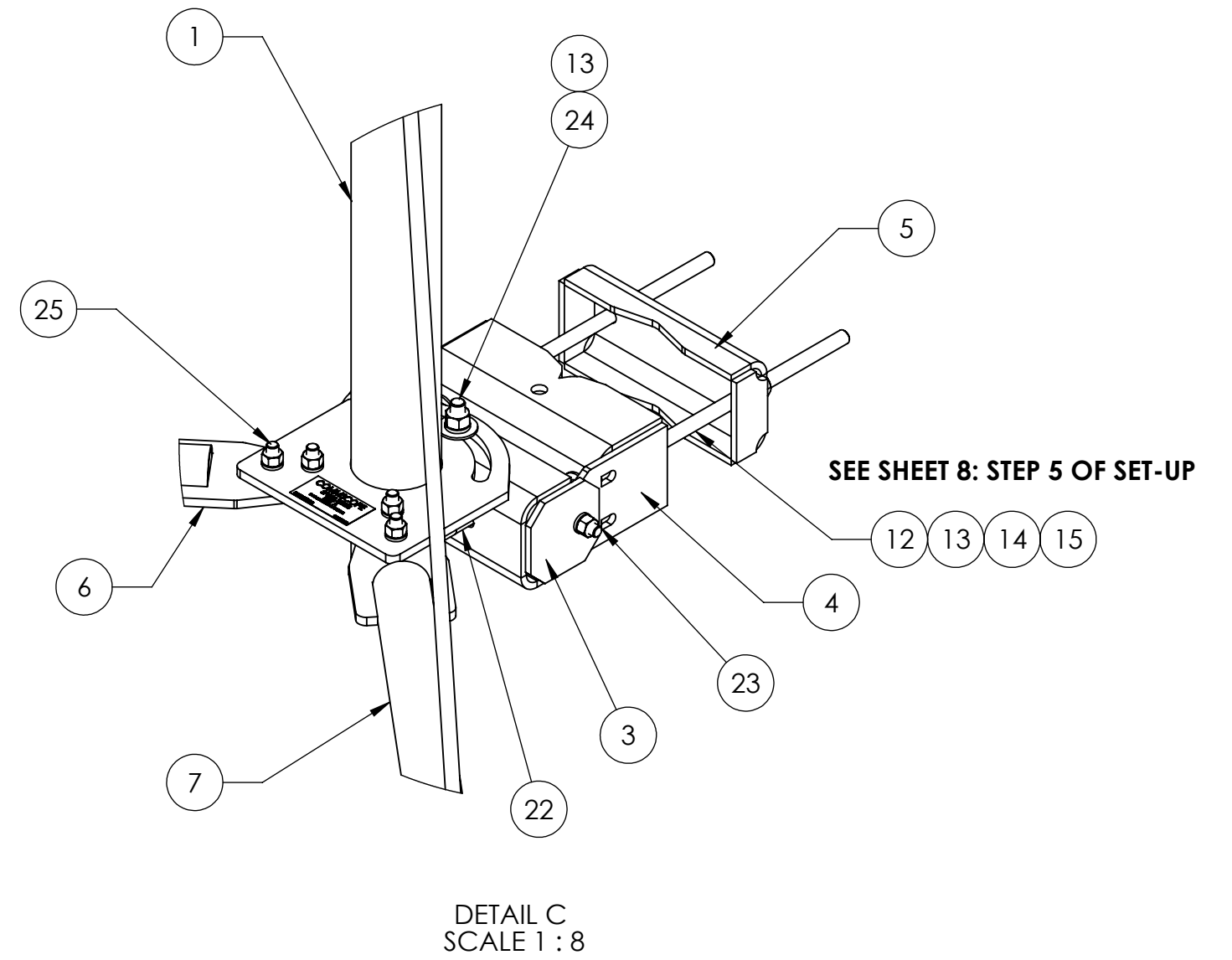
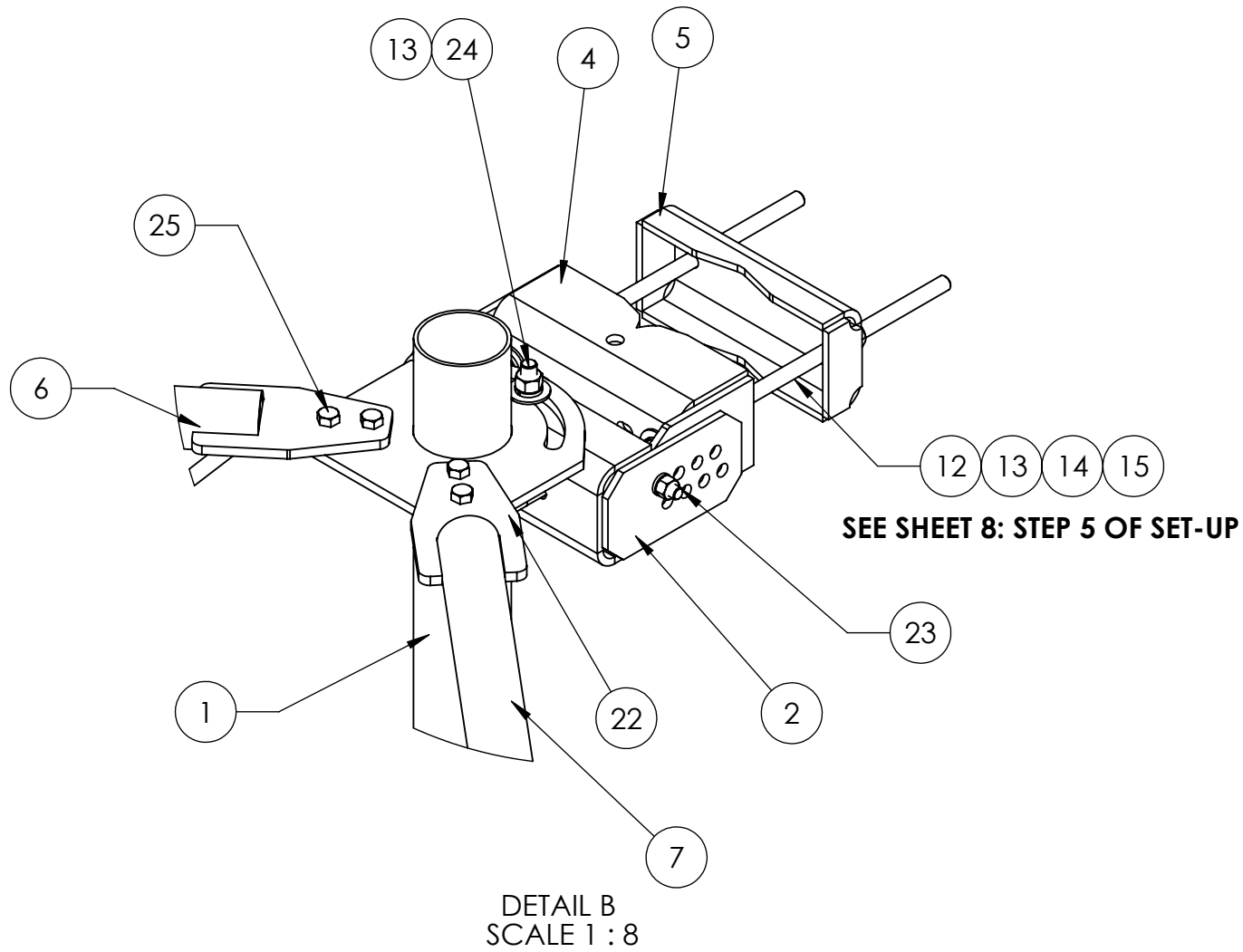
# TAPER GUIDE



DETAIL A  
SCALE 1 : 2


PATENT PENDING

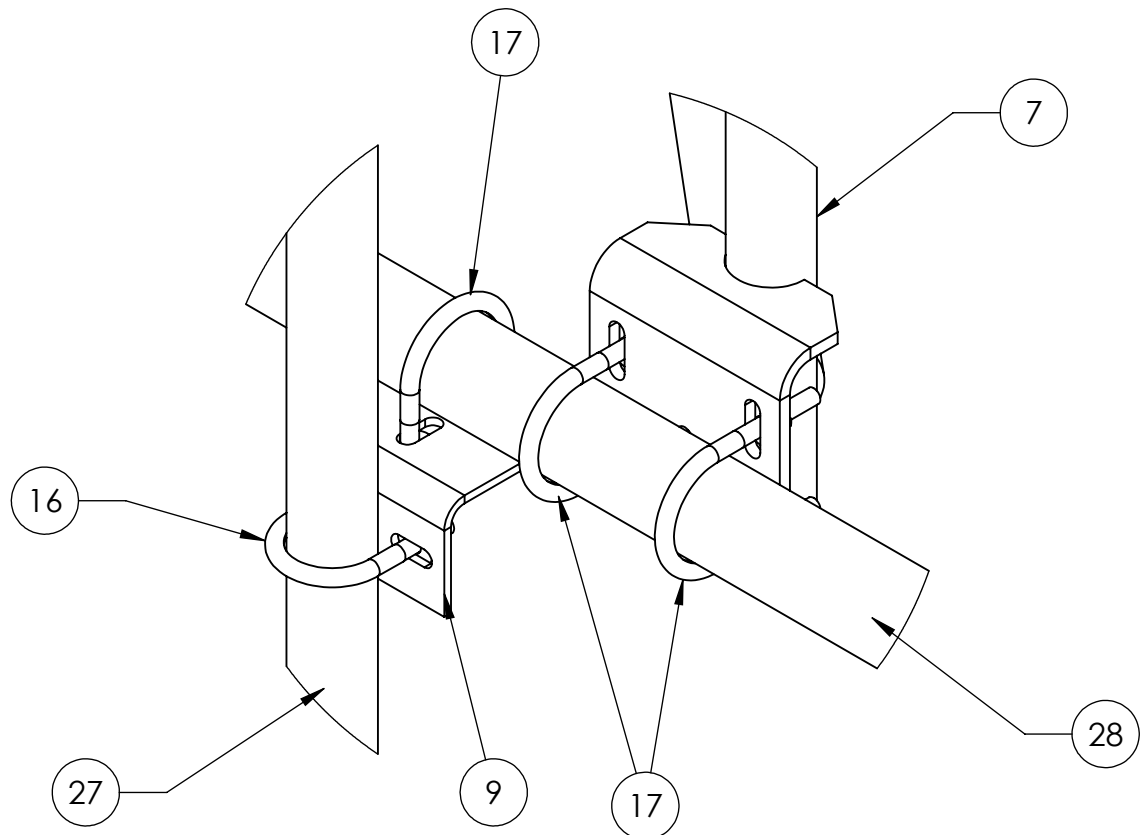
<p>These drawings and specifications are the proprietary property of CommScope Inc. and may be used only for the specific purpose authorized in writing by CommScope Inc.</p> <p>ALL DIMENSIONS ARE IN INCHES U.O.S. TOLERANCES UNLESS OTHERWISE SPECIFIED: .X = ± .12      ANGLES      ±2° .XX = ± .06      FRACTIONS      ±1/32 .XXX = ± .03</p> <p>REMOVE BURRS AND BREAK EDGES .005</p> <p>DO NOT SCALE THIS PRINT</p>	<p>DRAWN BY: MSM</p>	<p>SHEET: 4 of 8</p>	<p>PART NUMBER: SFG23HD SERIES</p>
	<p>CHECKED BY: TP</p>	<p>SCALE: NTS</p>	<p>DESCRIPTION:</p>
	<p>DATE: 02/16/16</p>	<p>MATERIAL: A-36, A-500</p>	<p>DRAWING TYPE: ASSEMBLY DRAWING</p>
	<p>REVISION: <b>C</b></p>	<p>FINISH: GALV A123</p> <p>WEIGHT: N/A</p>	<p><b>COMMSCOPE®</b> Hickory, NC 28602      U.S.A.</p>



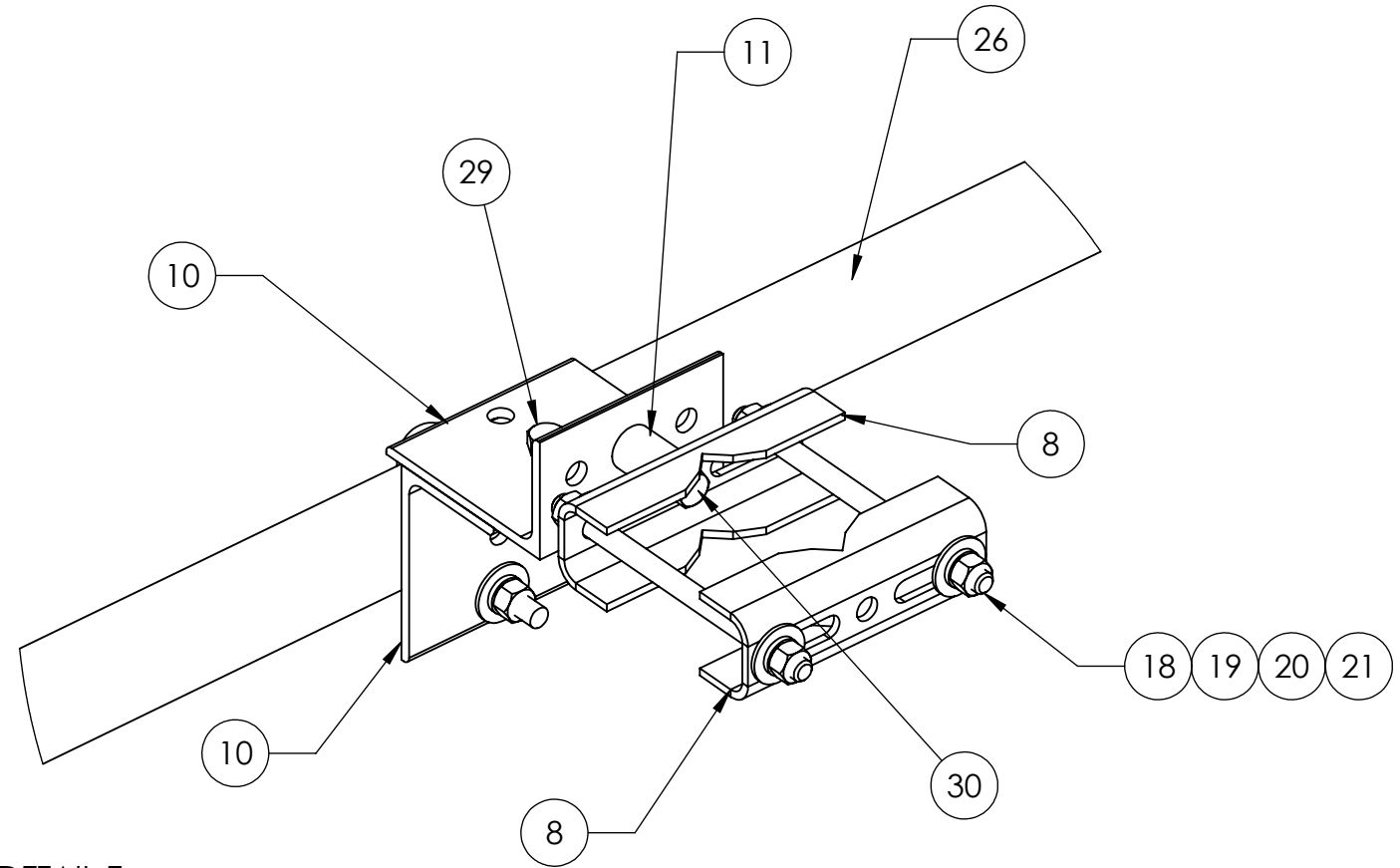
**\*DIAGONALS MUST BE INSTALLED AS SHOWN\***

**PATENT PENDING**

<small>These drawings and specifications are the proprietary property of CommScope Inc. and may be used only for the specific purpose authorized in writing by CommScope Inc.</small>  <small>ALL DIMENSIONS ARE IN INCHES U.O.S. TOLERANCES UNLESS OTHERWISE SPECIFIED:</small> .X = ± .12      ANGLES ±2° .XX = ± .06      FRACTIONS ±1/32 .XXX = ± .03  <small>REMOVE BURRS AND BREAK EDGES .005</small>  <b>DO NOT SCALE THIS PRINT</b>	<small>DRAWN BY:</small> MSM	<small>SHEET:</small> 5 of 8	<small>PART NUMBER:</small> SFG23HD SERIES
	<small>CHECKED BY:</small> TP	<small>SCALE:</small> NTS	<small>DESCRIPTION:</small> 
	<small>DATE:</small> 02/16/16	<small>MATERIAL:</small> A-36, A-500	<small>DRAWING TYPE:</small> ASSEMBLY DRAWING
	<small>REVISION:</small> <b>C</b>	<small>FINISH:</small> GALV A123  <small>WEIGHT:</small> N/A	 Hickory, NC 28602      U.S.A.



DETAIL D  
SCALE 1 : 5



DETAIL E  
SCALE 1 : 4

PATENT PENDING

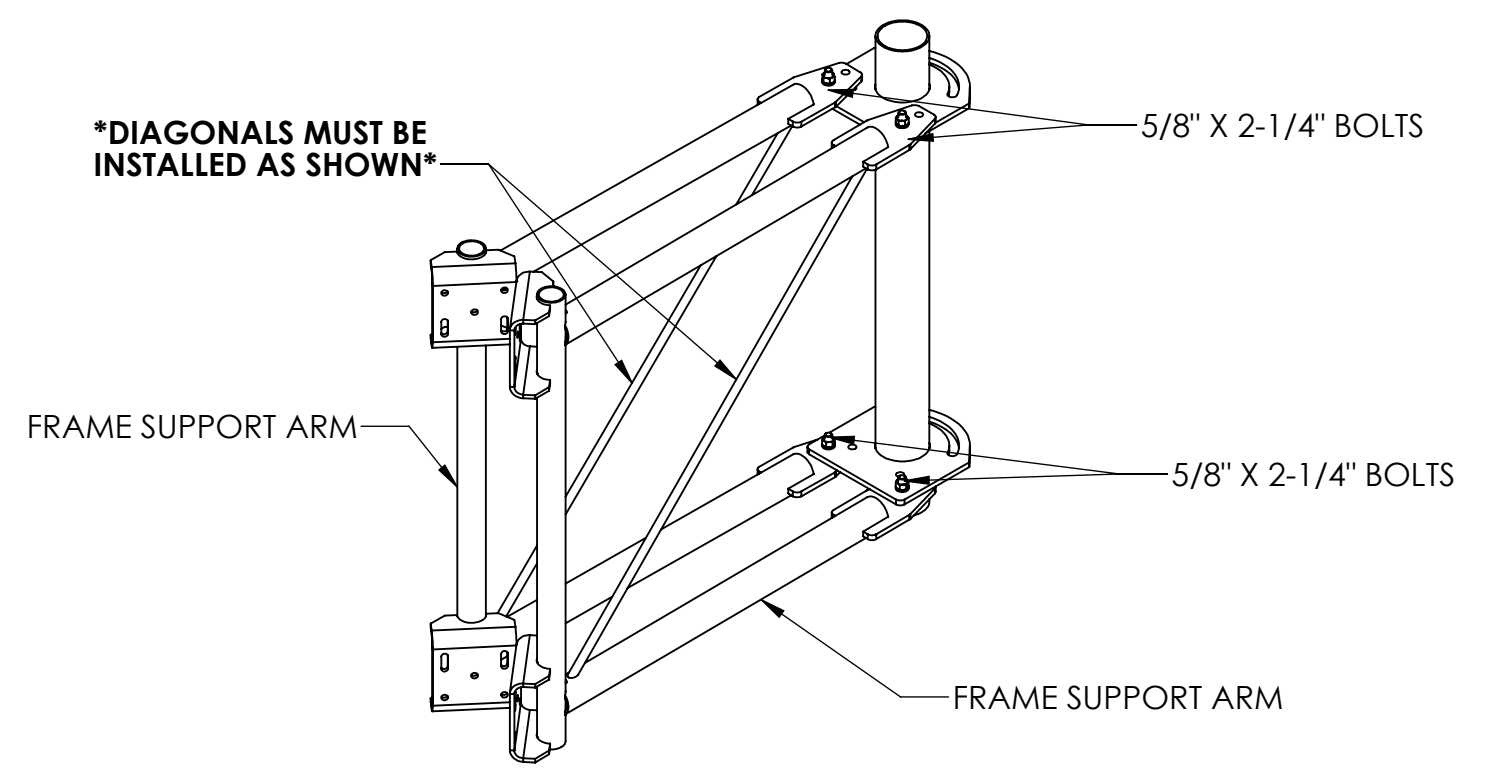
<p>These drawings and specifications are the proprietary property of CommScope Inc. and may be used only for the specific purpose authorized in writing by CommScope Inc.</p> <p>ALL DIMENSIONS ARE IN INCHES U.S.S. TOLERANCES UNLESS OTHERWISE SPECIFIED:</p> <p>.X = ± .12      ANGLES      ±2° .XX = ± .06      FRACTIONS      ±1/32 .XXX = ± .03</p> <p>REMOVE BURRS AND BREAK EDGES .005</p> <p>DO NOT SCALE THIS PRINT</p>	<p>DRAWN BY: MSM</p>	<p>SHEET: 6 of 8</p>	<p>PART NUMBER: SFG23HD SERIES</p>
	<p>CHECKED BY: TP</p>	<p>SCALE: NTS</p>	<p>DESCRIPTION:</p>
	<p>DATE: 02/16/16</p>	<p>MATERIAL: A-36, A-500</p>	<p>DRAWING TYPE: ASSEMBLY DRAWING</p>
	<p>REVISION: <b>C</b></p>	<p>FINISH: GALV A123</p>	<p>WEIGHT: N/A</p>



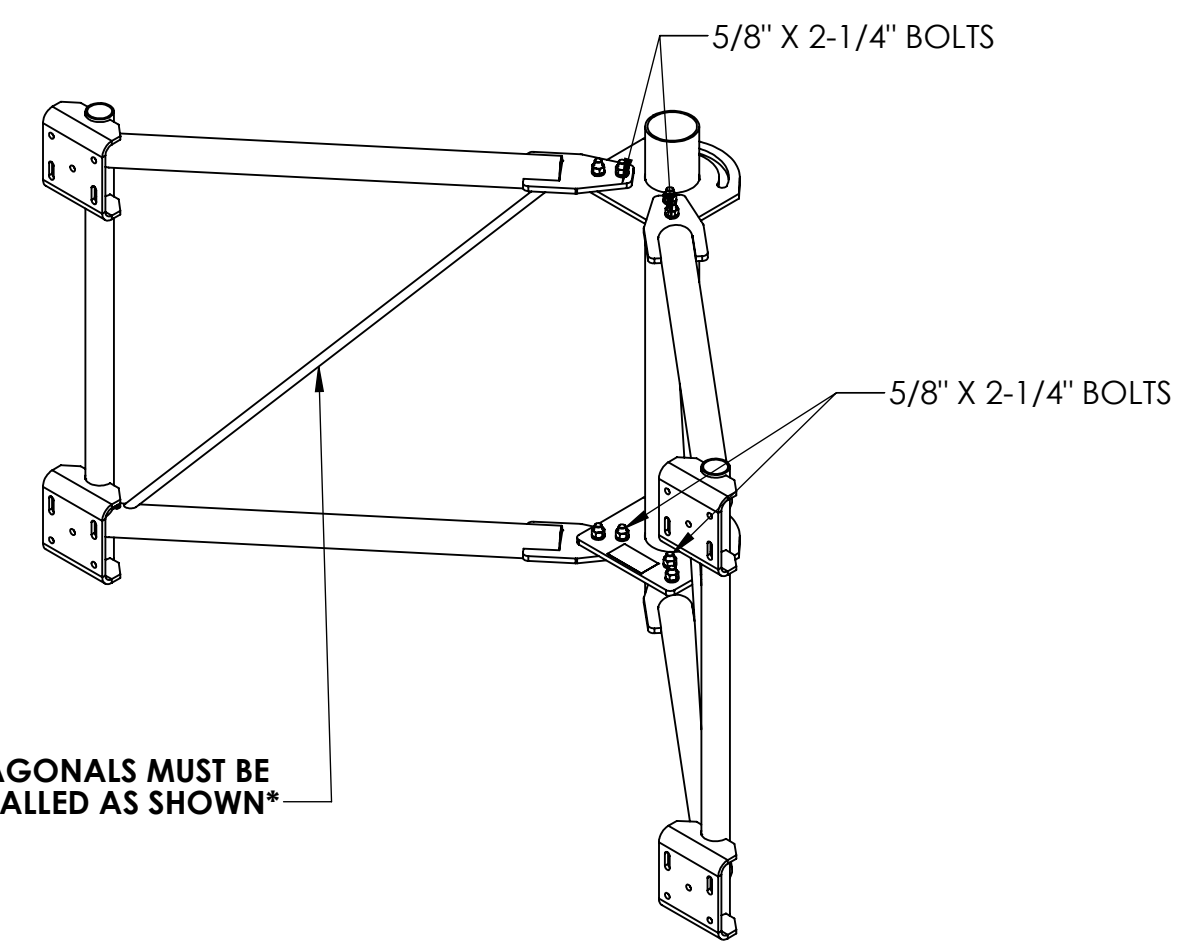
STEP 1: LOOSEN 5/8" HARDWARE TO OPEN ARMS.

# ASSEMBLY INSTRUCTION ORDER

STEP 2: OPEN ARMS ADD 5/8" X 2-1/4" BOLTS



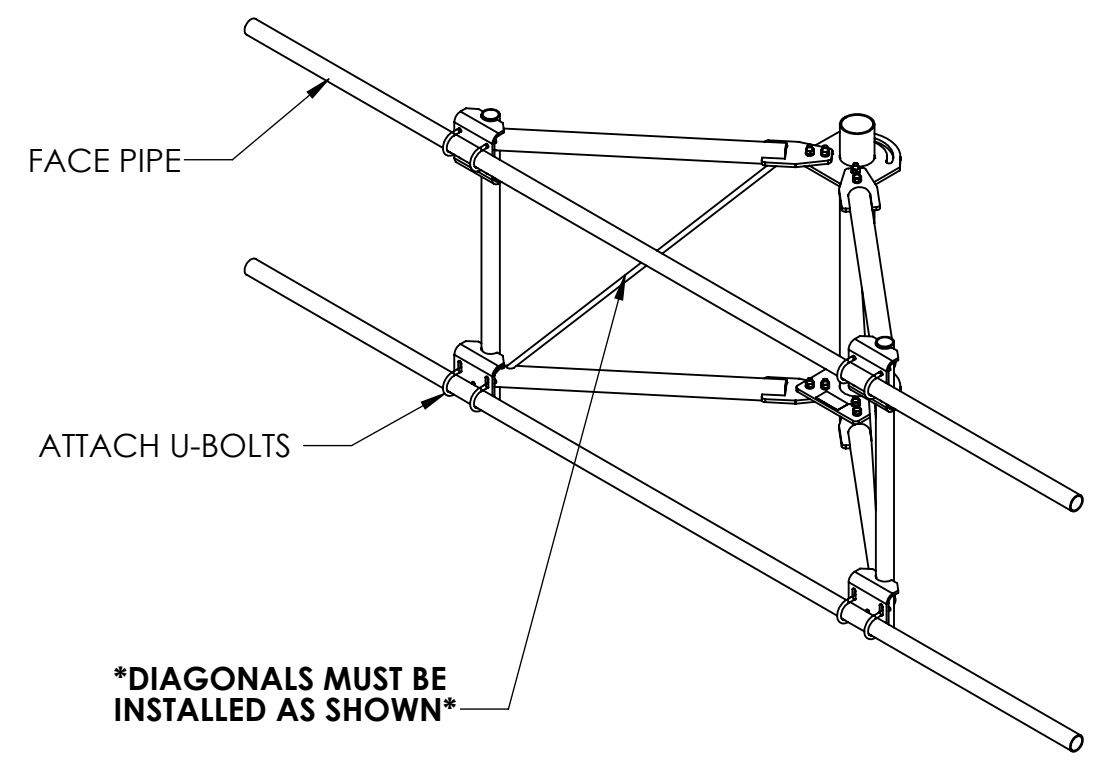
**\*DO NOT TIGHTEN  $\phi$  5/8" BOLTS AT THIS TIME\***



**\*DIAGONALS MUST BE INSTALLED AS SHOWN\***

STEP 3: INSTALL FACE PIPES AND  $\phi$  1/2" U-BOLTS

**\*TIGHTEN U-BOLTS FIRST AND  $\phi$  5/8" BOLTS SECOND\***

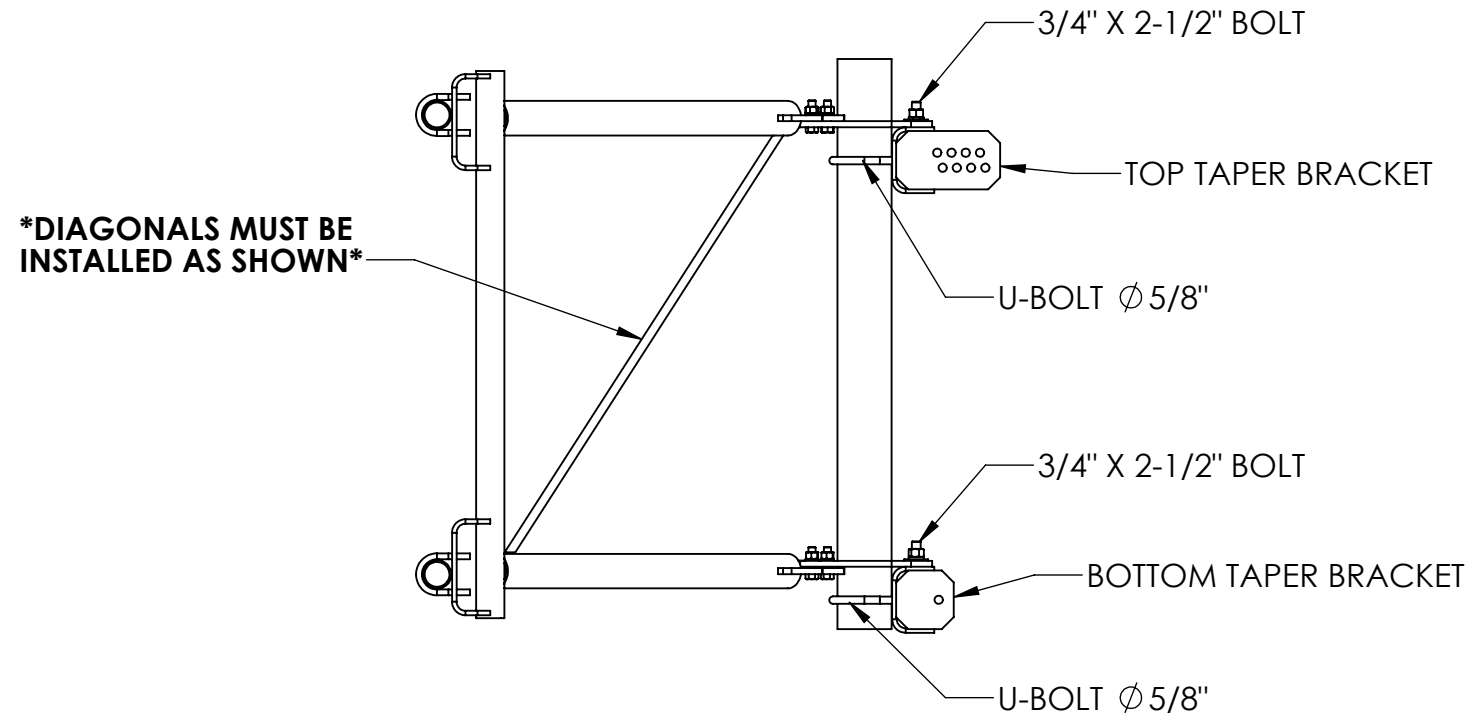


**\*DIAGONALS MUST BE INSTALLED AS SHOWN\***

PATENT PENDING

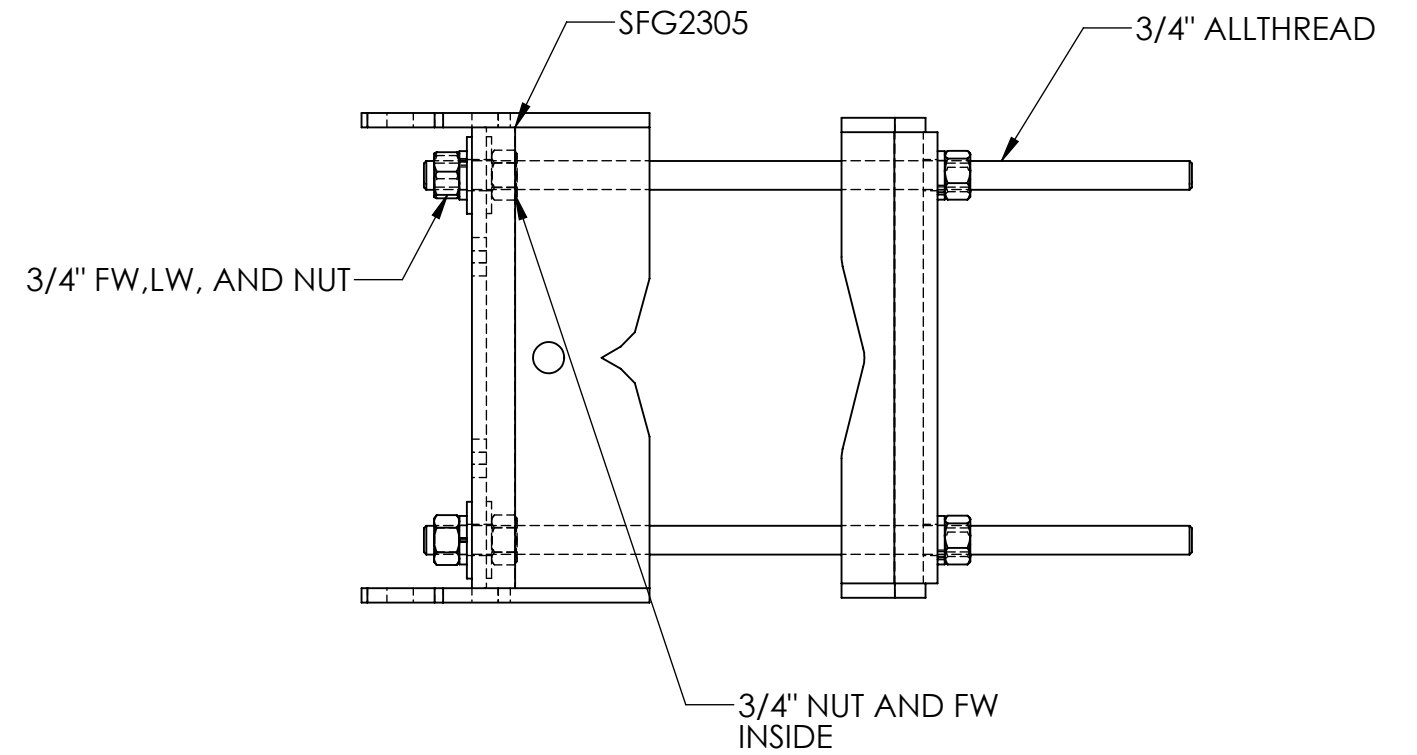
<small>These drawings and specifications are the proprietary property of CommScope Inc. and may be used only for the specific purpose authorized in writing by CommScope Inc.</small>  <small>ALL DIMENSIONS ARE IN INCHES U.O.S. TOLERANCES UNLESS OTHERWISE SPECIFIED:                  .X = <math>\pm</math> .12      ANGLES <math>\pm</math>2°                  .XX = <math>\pm</math> .06      FRACTIONS <math>\pm</math>1/32                  .XXX = <math>\pm</math> .03</small>  <small>REMOVE BURRS AND BREAK EDGES .005</small>  DO NOT SCALE THIS PRINT	DRAWN BY: MSM CHECKED BY: TP DATE: 02/16/16 REVISION: C	SHEET: 7 of 8 SCALE: NTS MATERIAL: A-36, A-500 FINISH: GALV A123 WEIGHT: N/A	PART NUMBER: SFG23HD SERIES DESCRIPTION: DRAWING TYPE: ASSEMBLY DRAWING <b>COMMSCOPE®</b> Hickory, NC 28602 U.S.A.
--	--	--	--

**STEP 4: ASSEMBLE TOWER CLAMPS**

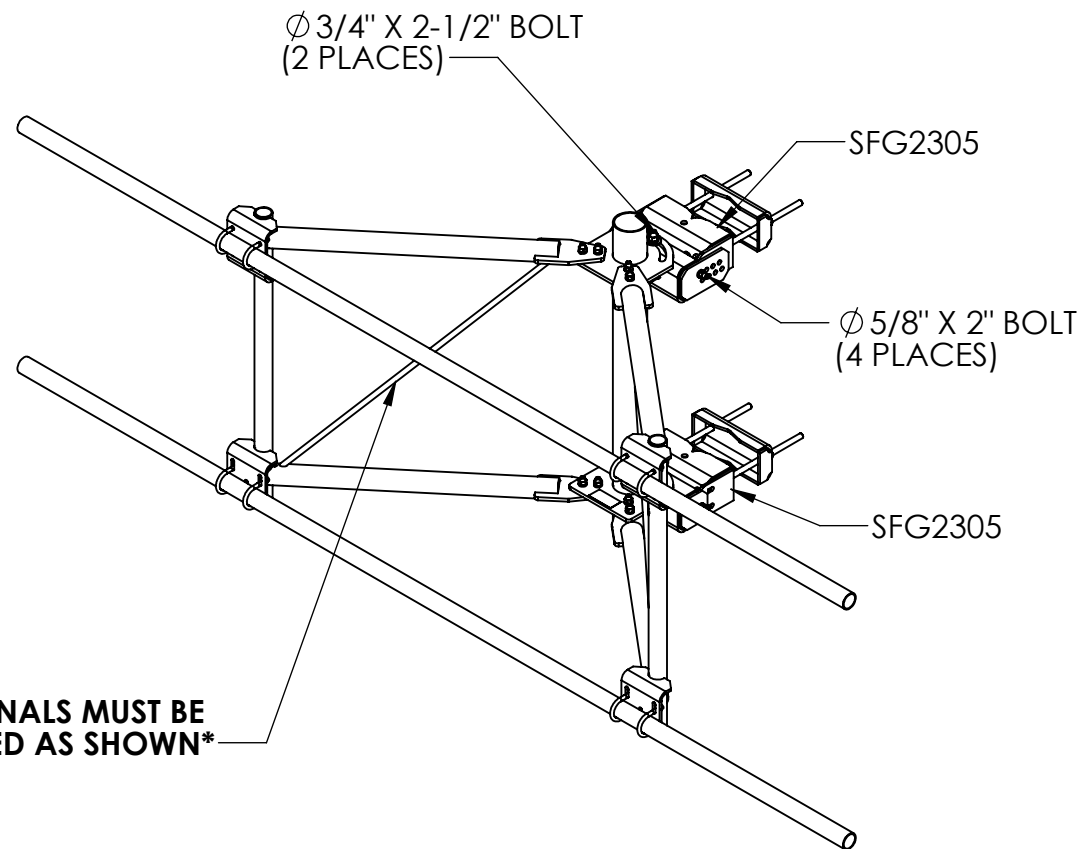


**\*DIAGONALS MUST BE INSTALLED AS SHOWN\***

**STEP 5: ATTACH TOWER CLAMPS  
\*ROUND TOWER LEG SETUP SHOWN\***



$\varnothing$  3/4" X 2-1/2" BOLT  
(2 PLACES)



**\*DIAGONALS MUST BE INSTALLED AS SHOWN\***

**\*DIAGONALS MUST BE INSTALLED AS SHOWN\***

**PATENT PENDING**

<p>These drawings and specifications are the proprietary property of CommScope Inc. and may be used only for the specific purpose authorized in writing by CommScope Inc.</p> <p>ALL DIMENSIONS ARE IN INCHES U.O.S. TOLERANCES UNLESS OTHERWISE SPECIFIED: .X = ± .12      ANGLES      ±2° .XX = ± .06      FRACTIONS      ±1/32 .XXX = ± .03</p> <p>REMOVE BURRS AND BREAK EDGES .005</p> <p>DO NOT SCALE THIS PRINT</p>	<p>DRAWN BY: MSM</p>	<p>SHEET: 8 of 8</p>	<p>PART NUMBER: SFG23HD SERIES</p>
	<p>CHECKED BY: TP</p>	<p>SCALE: NTS</p>	<p>DESCRIPTION:</p>
	<p>DATE: 02/16/16</p>	<p>MATERIAL: A36</p>	<p>DRAWING TYPE: ASSEMBLY DRAWING</p>
	<p>REVISION: C</p>	<p>FINISH: GALV A123</p>	<p>WEIGHT: N/A</p>