

TC-1212-IP
Rev A, Apr 2017
www.commscope.com

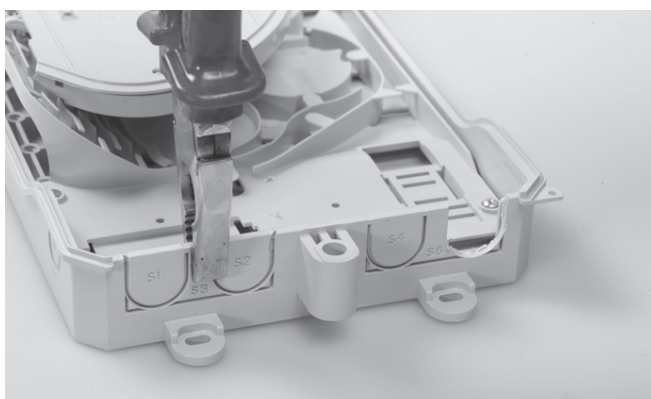
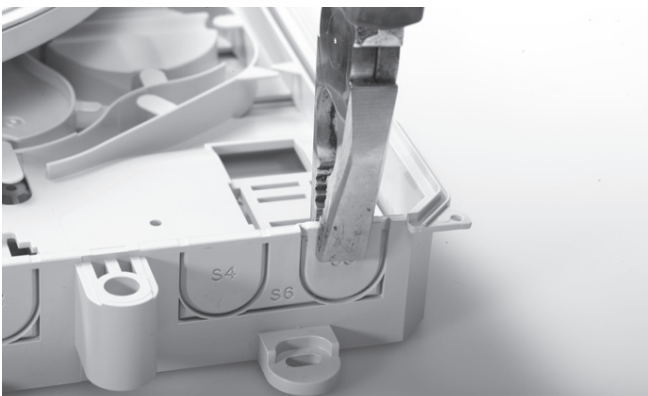
1 General

Smallest splice/patch enclosure of the BUDI family using FIST with a maximum of 12 connections.

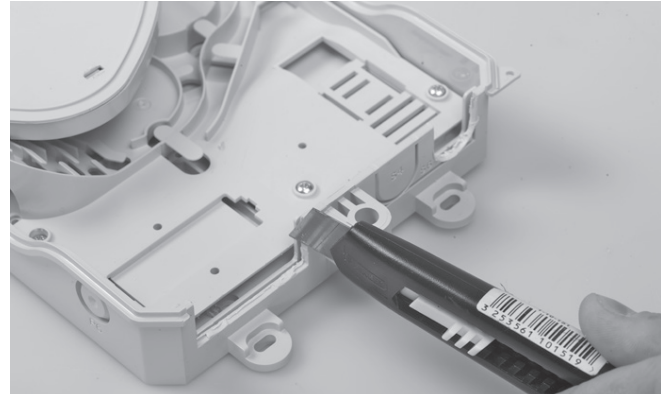
2 Kit content



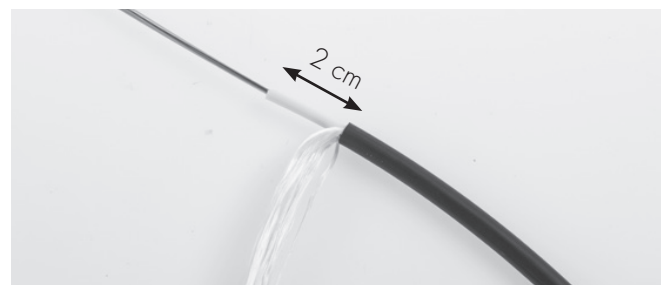
3 Feeder cable installation



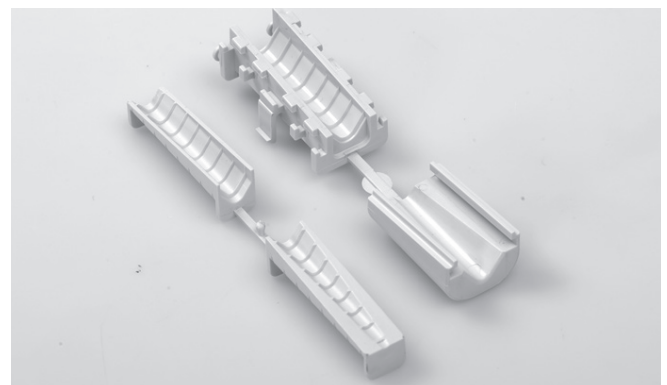
3.1 Open up feeder and drop cables entries.



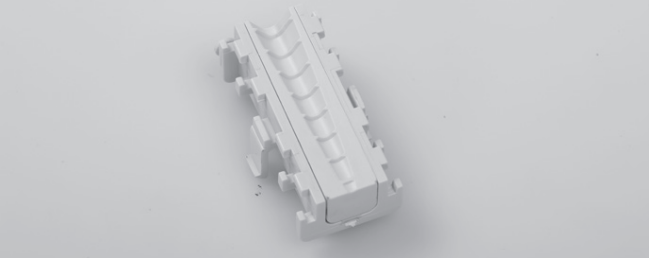
3.2 Remove all burrs and sharp edges from the cable entries with a sharp knife (e.g. carpet cutter).



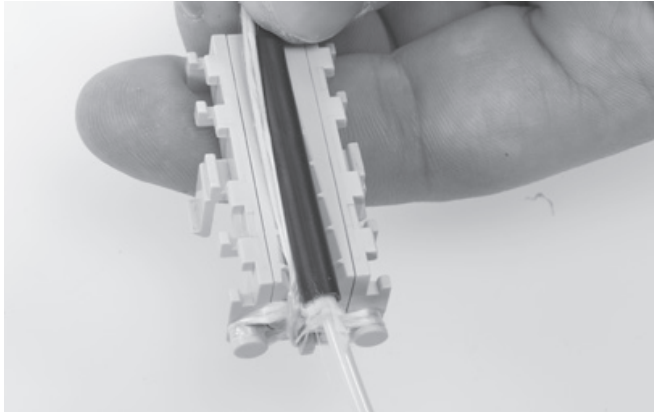
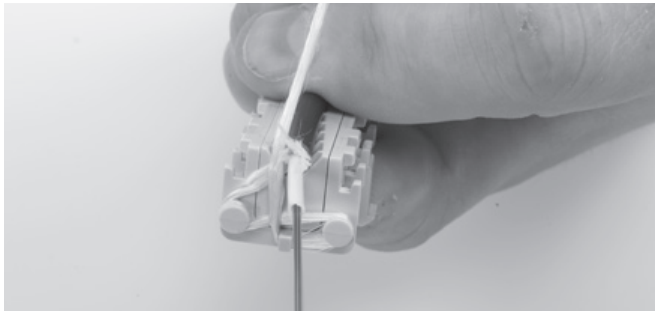
3.3 Strip the feeder cable (1,5 m) and strip the loose-tube leaving 2 cm of it.



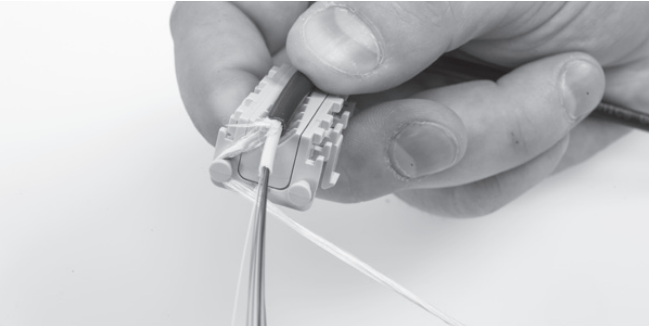
3.4 Break off the parts needed for feeder cable termination.



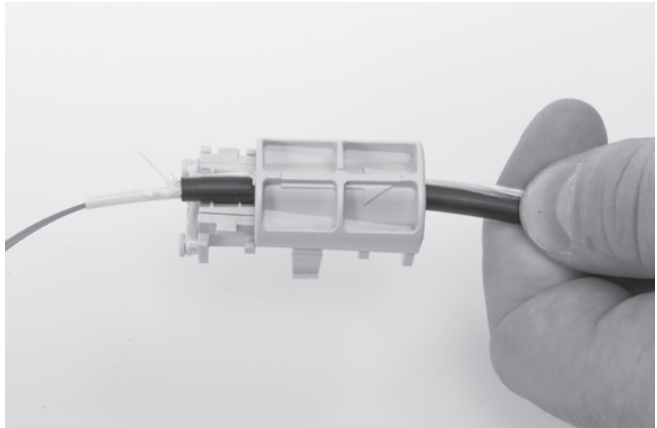
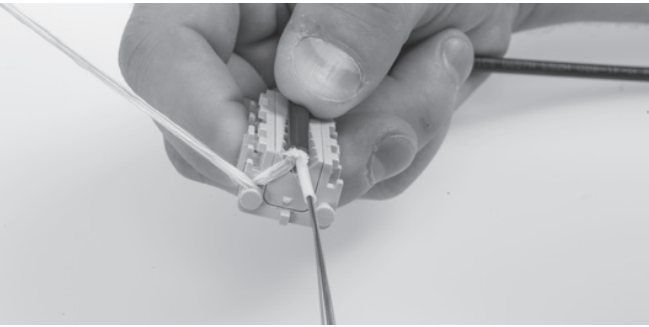
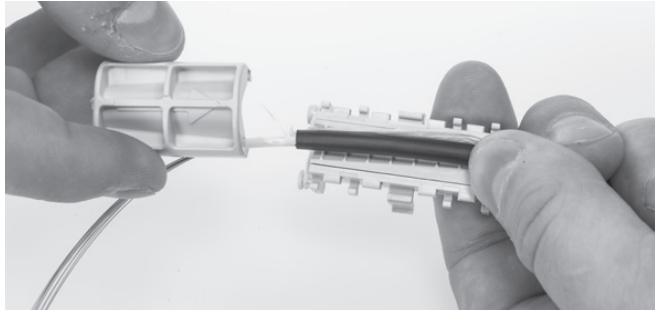
3.5 Install the insert into the cable holder depending on the cable diameter (2 inserts are available).



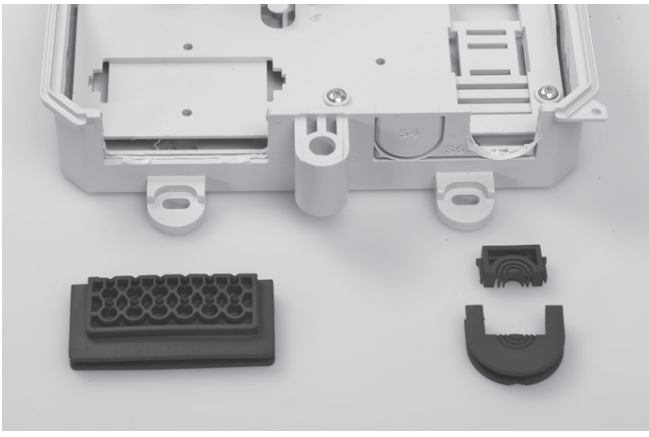
3.7 Route the aramid yarns around the lips as shown.



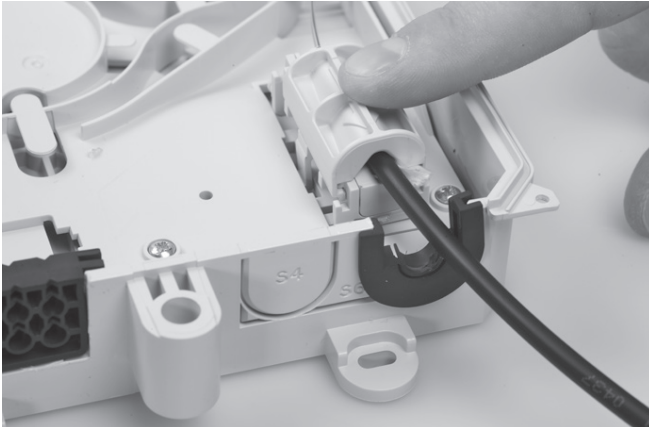
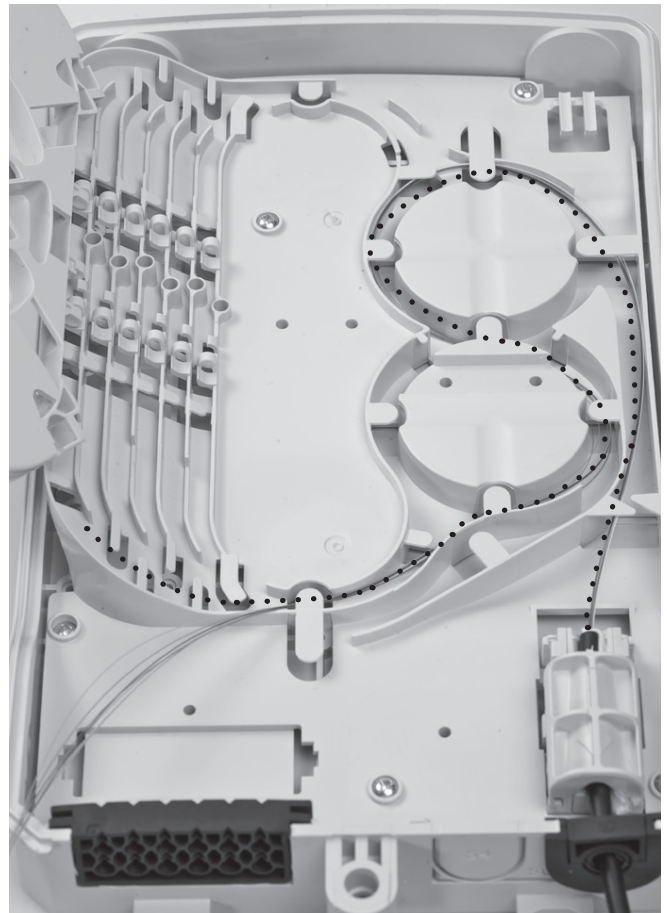
3.6 Install the feeder cable into the cable holder.



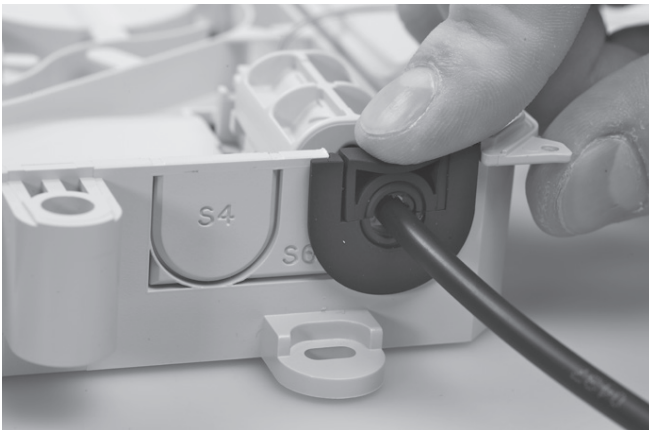
3.8 Close the cable holder by sliding the cover over the base (orientation arrow towards the cable) and cut off the rest of aramid yarns.



3.9 Install the grommets.



3.10 Install the cable holder into the box on the lowest position (adjust the position depending on the cable diameter).

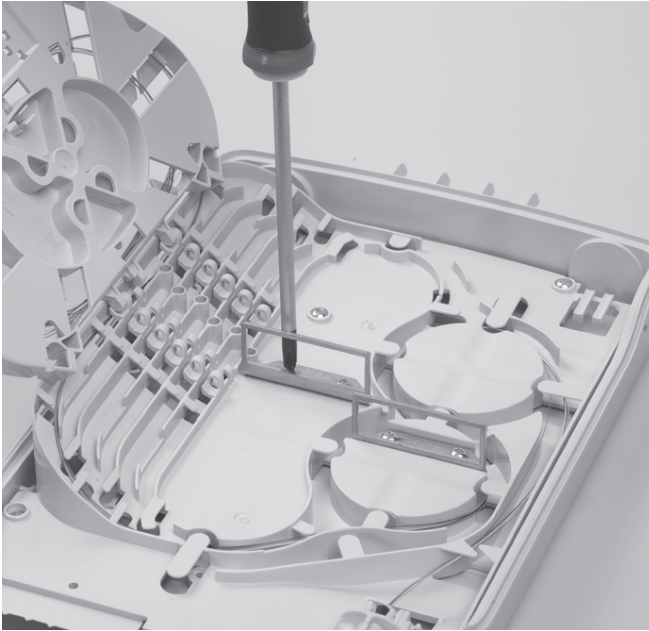


3.11 Install the second part of grommet to seal the box.

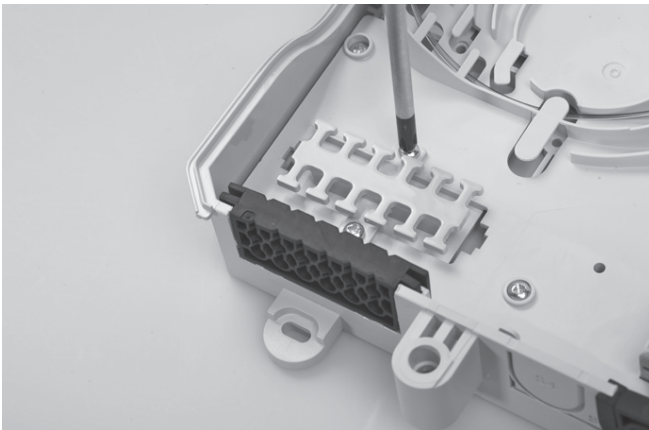


3.12. Route the fibers to be spliced towards to the tray trough the Box as shown.

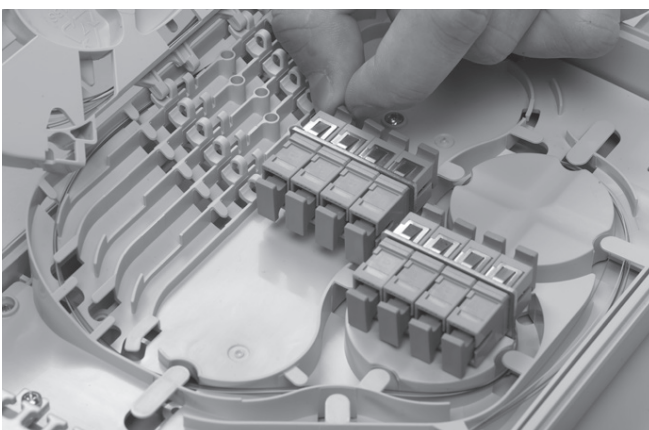
4 Patch panel installation



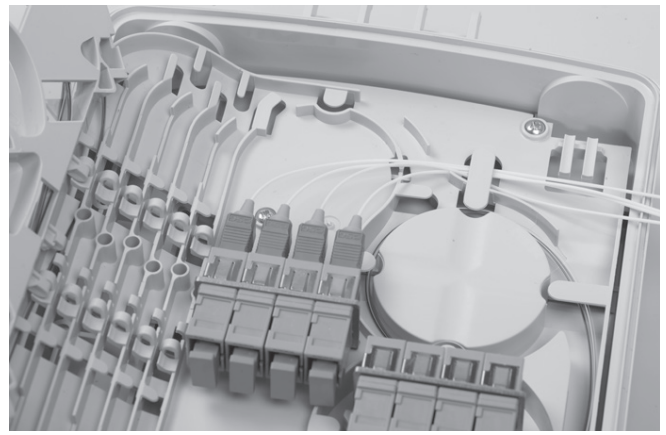
4.1 Install the patch panels.



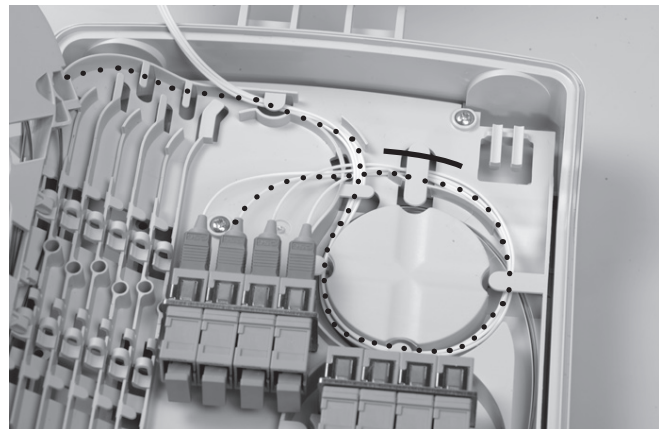
4.2 Install the strain relief for drop pigtails.



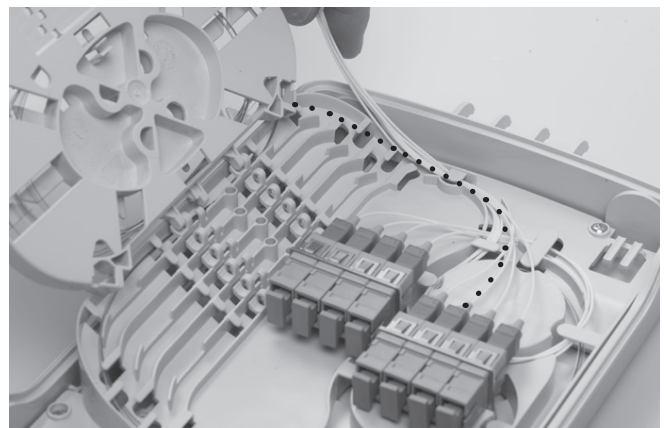
4.3 Insert the adapters and remove the plugs.

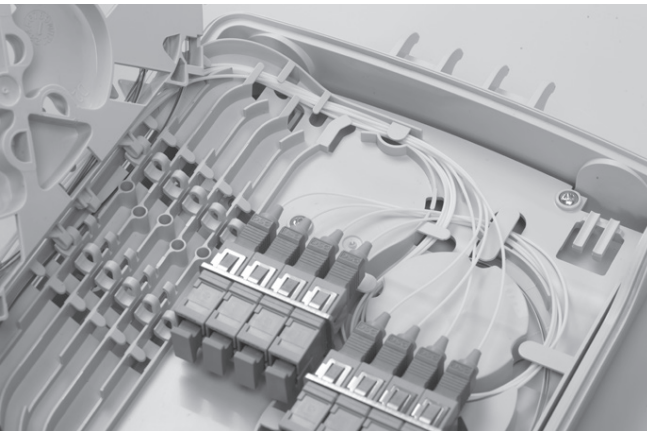


4.4 Connect first four 900µm pigtails.

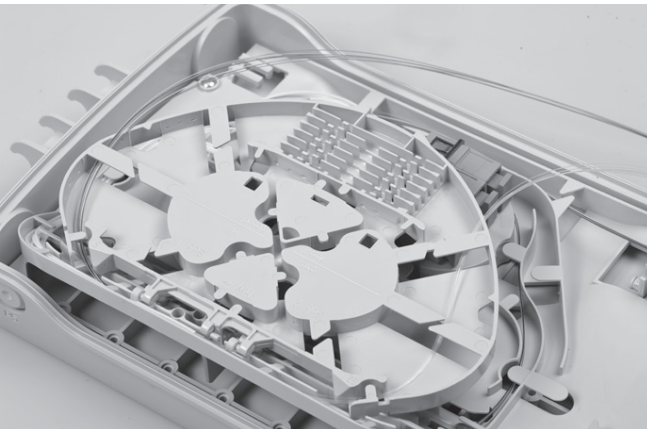
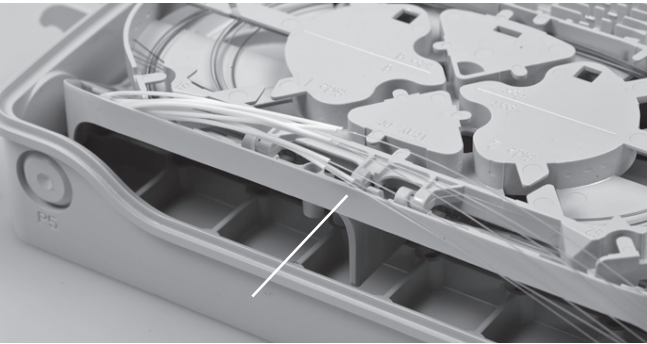


4.5 Route the first four 900µm pigtails to be spliced towards to the tray trough the Box as shown.





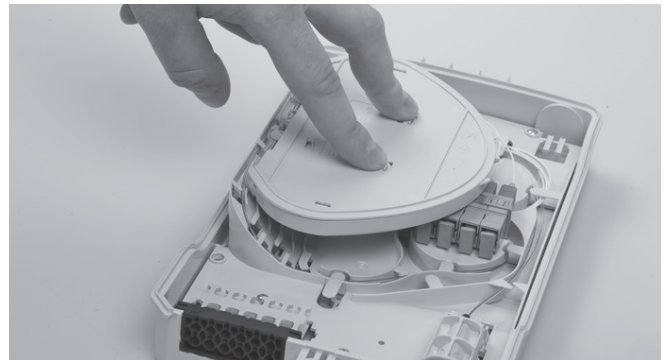
4.6 Connect the rest of the 900 μ m pigtailed and route them towards to the tray through the Box as shown.



4.7 Strip the 900 μ m pigtailed at the marked position.

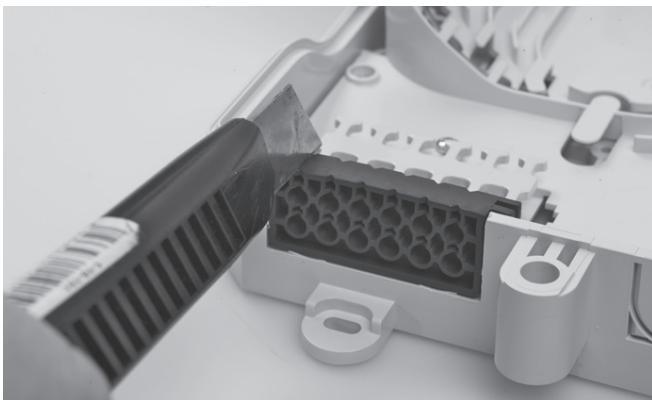


4.8 Splice the fibers from the feeder cable to the pigtailed and store the overlength into the tray.

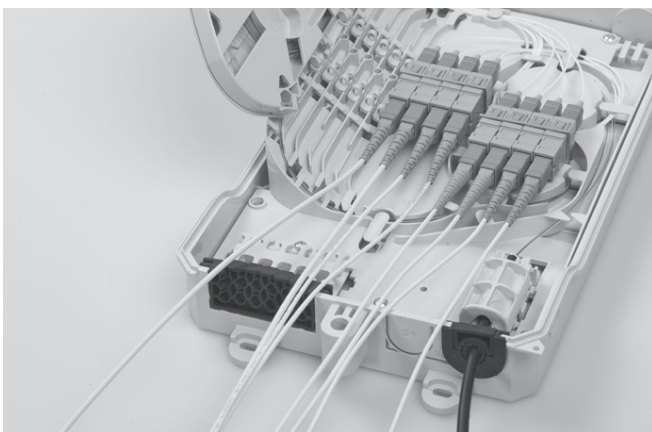


4.9 Install the cover onto the tray.

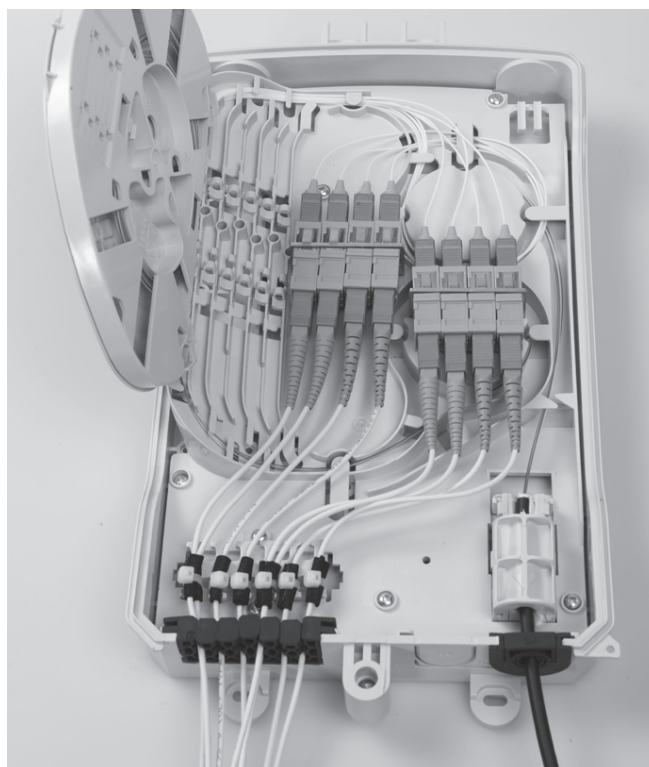
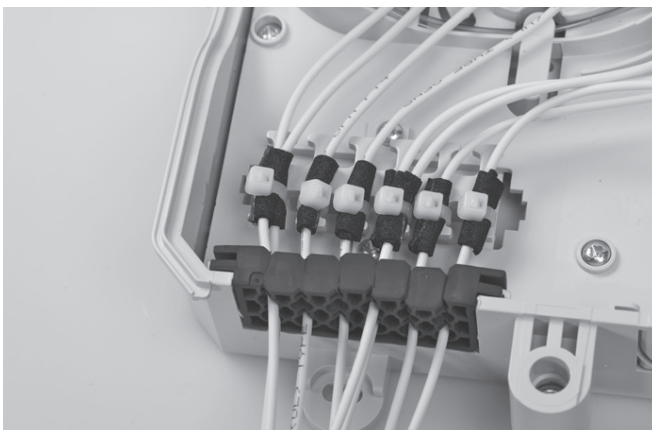
5 Drop cables installation



5.1 Cut the grommet where the drop cable will be installed.



5.2 Connect all the drop cables.



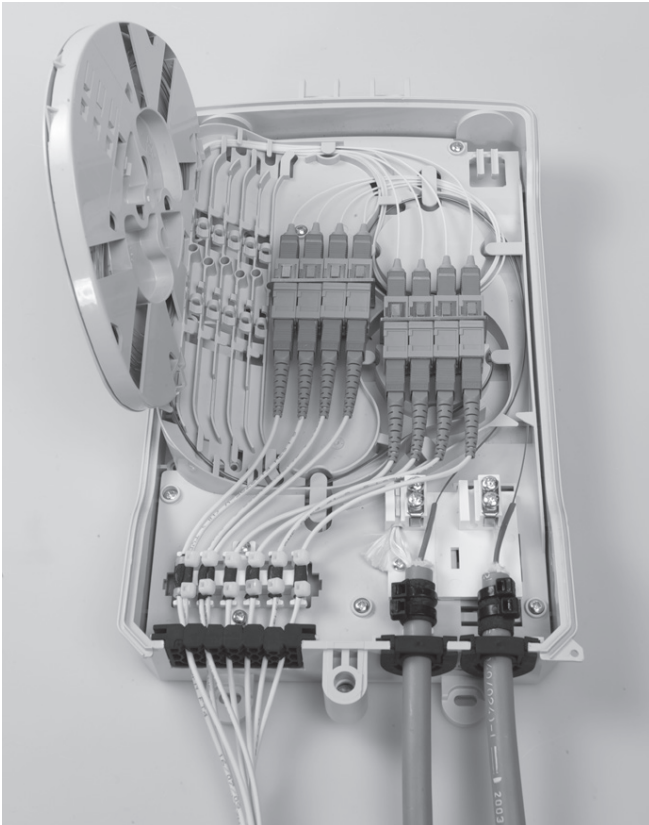
5.3 Apply the foam and secure with tie-wraps as shown.



5.4 Install the cover and secure with the screw.



5.5 Installed box.



5.6 Installed box with two feeder cables (optional).

To find out more about CommScope® products, visit us on the web at www.commscope.com

For technical assistance, customer service, or to report any missing/damaged parts, visit us at:
<http://www.commscope.com/SupportCenter>

© 2017 CommScope, Inc. All rights reserved.

All trademarks identified by ® or ™ are registered trademarks or trademarks, respectively, of CommScope, Inc.

This document is for planning purposes only and is not intended to modify or supplement any specifications or warranties relating to CommScope products or services.

This product is covered by one or more U.S. patents or their foreign equivalents. For patents, see:
www.commscope.com/ProductPatent/ProductPatent.aspx.