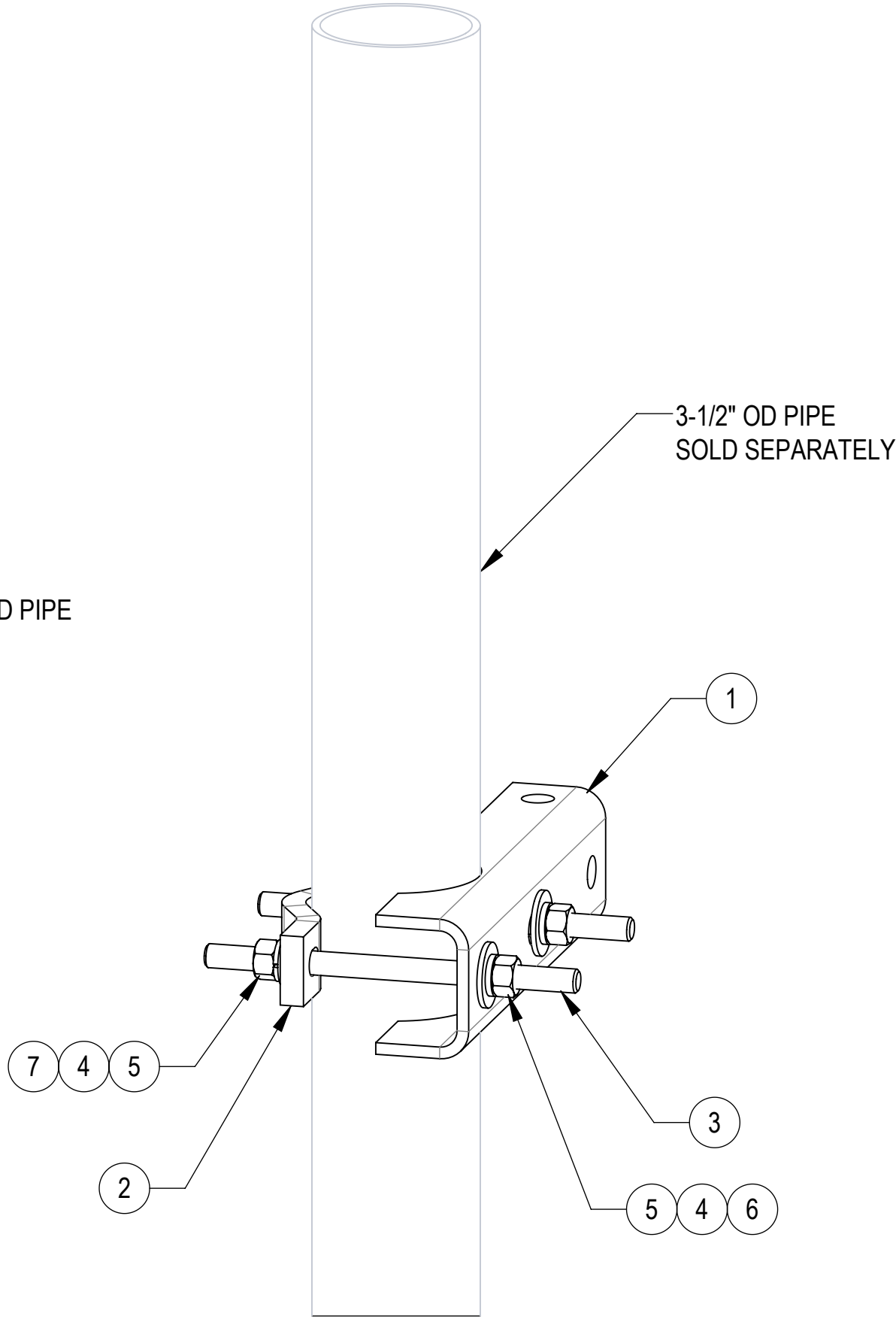
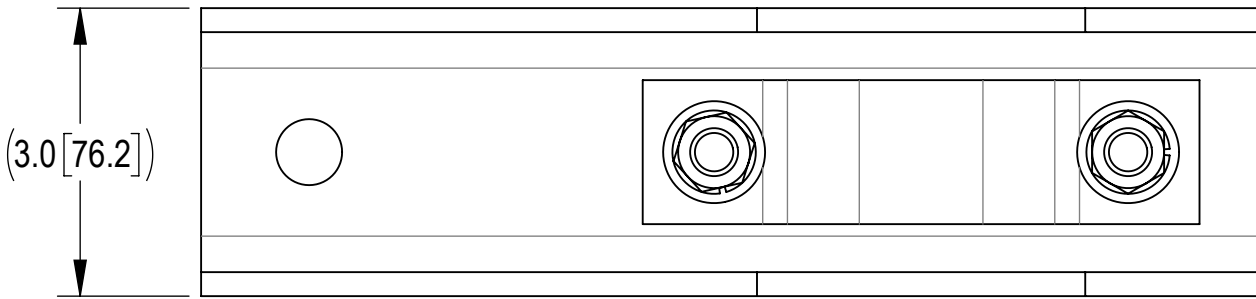
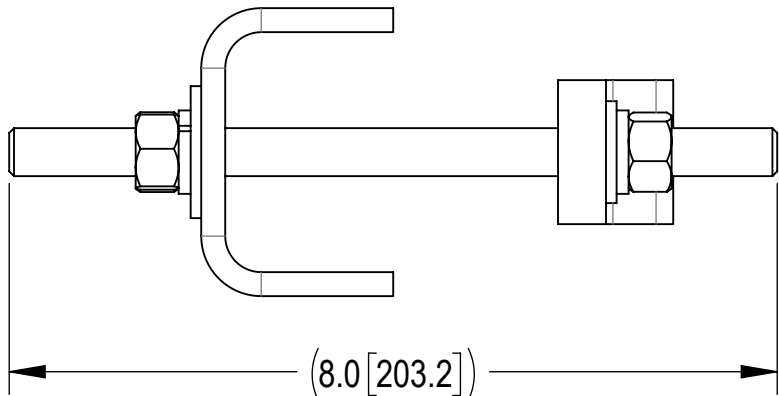
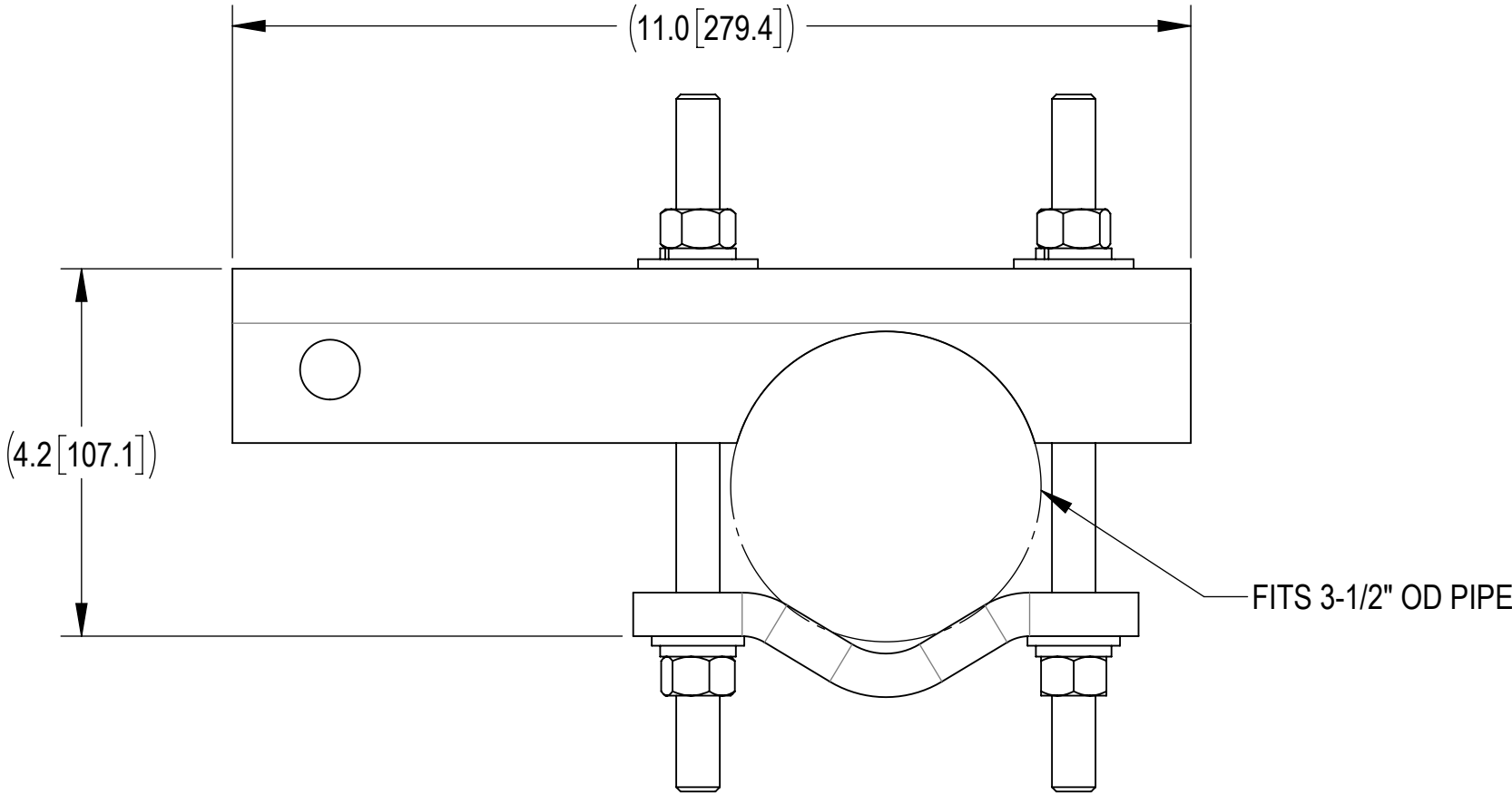


- 1.0 GENERAL NOTES
- 1.1 ALL METRIC DIMENSIONS ARE IN BRACKETS [X. X]
- 1.2 FOR PATENT INFO: <https://www.cs-pat.com>
- 2.0 DESIGN NOTES
- 2.1 ANY HAZARDS OR OBSTRUCTIONS TO THE CLIMBING FACILITY AND SAFETY CLIMB MUST BE IDENTIFIED PRIOR TO INSTALLING THE APPURTENANCE. ADDITIONAL PRODUCTS MAY BE REQUIRED TO MAINTAIN THE INTEGRITY OF THE SAFETY CLIMB. DURING INSTALLATION, TEMPORARY AND/OR PERMANENT PRECAUTIONARY MEASURES SHOULD BE TAKEN TO PRESERVE THE CLIMBING FACILITY AND/OR SAFETY CLIMB.
- 3.0 MANUFACTURING/SPECIAL REQUIREMENTS
- 3.1 TIGHTEN ALL BOLTS SECURING FLAT PLATES BY THE TURN-OF-NUT METHOD.
- 4.0 TEST
- 5.0 PACKAGING
- 5.1 PACKAGING SHALL MEET COMMScope REQUIREMENTS PER DOCUMENT IS-PL-3005
- 5.2 PRINTED DOCUMENT TO BE PLACED INSIDE POLYBAG AND THEN IN SHIPPING CONTAINER
- 5.3 EXTRA HARDWARE MAY BE SUPPLIED, BAGGED AND SHIPPED

REVISIONS			
REV.	DESCRIPTION	DATE	APPROVED
A	INITIAL RELEASE	MSM 01MAR11	TP
B	REPLACED GUB-53560 WITH SCP10,MT-379-8,GWL-04,GN-04,GWF-04 AND GWF04A	LL1090 31MAR25	JX1002 50102206AMO

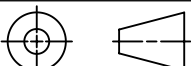


COMPONENT PART NUMBERS PROVIDED FOR ASSEMBLY PURPOSES;
INDIVIDUAL COMPONENTS MAY BE SHIPPED AS PARTS WITHIN AN INCLUDED KIT.

ITEM	PART NO.	DESCRIPTION	QTY.	WEIGHT	NOTE NO.
1	TFMSS35	STIFF-ARM STRUT SUPPORT, 3-1/2IN OD ARM	1	4.05 LBS	
2	SCP10	CLAMP HALF: 1/2", 9/16" HOLE,4-1/8" (EA)	1	1.20 LBS	
3	MT-379-8	1/2" X 8" GALV THREADED ROD	2	0.45 LBS	
4	GWL-04	1/2" GALV LOCK WASHER	4	0.01 LBS	
5	GN-04	1/2" GALV HEX NUT	4	0.04 LBS	
6	GWF-04	1/2" GALV FLAT WASHER	2	0.04 LBS	
7	GWF04A	1/2" GALV FLAT WASHER (A325)	2	0.02 LBS	

DENSITY	MASS	6.48	lbs/in³
VOLUME	22.98		lbs
SURFACE AREA	204.77		in³
HEIGHT	8.0"		
LENGTH	11.0"		
WIDTH	3.0"		

© 2025 CommScope, Inc. Confidential

COMMSCOPE, INC. OF NORTH CAROLINA																	
TOLERANCES						SAP MATERIAL MASTER											
1 PLACE .X[X] ± 0.12[3.0]			3 PLACE .XXX[X] ± 0.03[0.8]			TF-MSS-BK											
2 PLACE .XX[X] ± 0.06[1.5]			ANGLES ± 2°														
FINISH						MATERIAL											
UNLESS OTHERWISE SPECIFIED DIMENSIONS ARE IN INCHES INTERPRET PER ANSI Y 14.5M-1994		NAME		DATE		TITLE STIFF ARM ATTACHMENT BRACKET											
	CE	MSM		01MAR11													
	RW	LL1090		03/31/2025													
	AD	JX1002		04/01/2025		SCALE 1:2		DOCUMENT NO. TF-MSS-BK									
	RE	YMENG		04/07/2025													
	ECN 50102206AMO																
SIZE		Auth Group		INSL		MODEL			DRAWING			SHEET 1 OF 1					
C						VERSION		STATUS		REVISION							
						01		RE		B		01		RE		B	