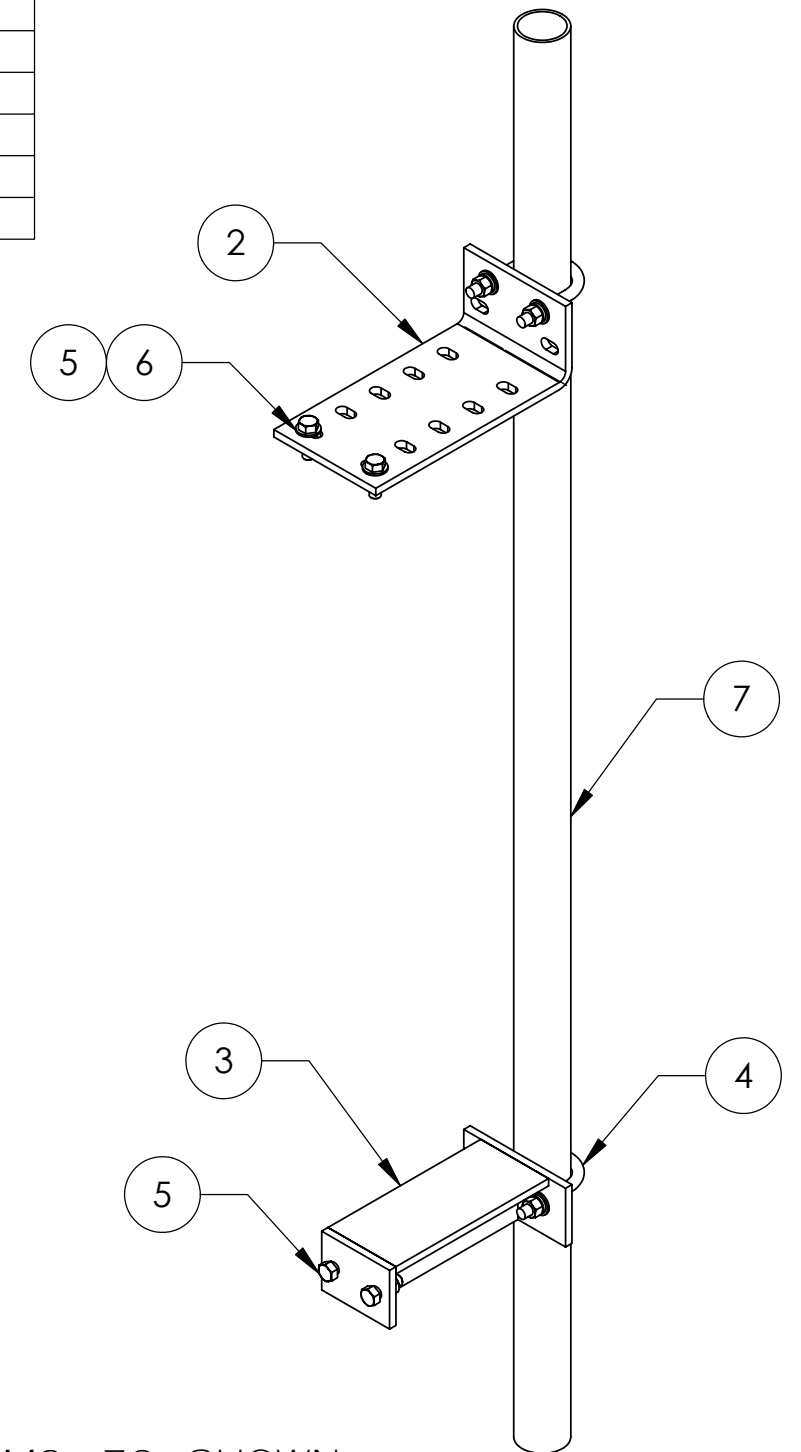
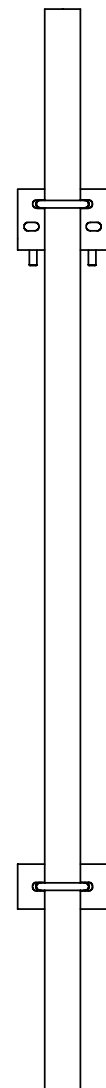
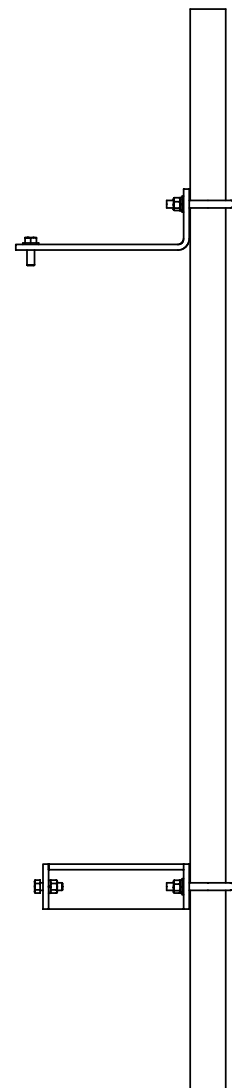
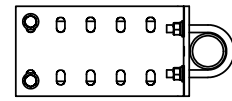



ITEM	PART NO.	DESCRIPTION	WT-HRM2-B QTY.	WT-HRM2-72 QTY.	WT-HRM2-96 QTY.	WT-HRM2-126 QTY.	WEIGHT
1	WT-HRM2-B	HARDWARE KIT (ITEMS 2-6)	-	1	1	1	
2	WTHRM2.01	UPPER BRACKET	1	1	1	1	8.79 LBS
3	WTHRM2.02	LOWER BRACKET	1	1	1	1	9.31 LBS
4	GUB-4240	1/2" X 2-1/2" X 4" GALV U-BOLT	2	2	2	2	0.31 LBS
5	GB-0414A	1/2" X 1-1/2" GALV BOLT KIT (A325)	4	4	4	4	0.13 LBS
6	GWF04A	1/2" GALV FLAT WASHER (A325)	2	2	2	2	0.02 LBS
7	MT-651	Ø2.375" OD x 72" SCH 40 PIPE	-	1	-	-	22.00 LBS
7	MT-651-96	Ø2.375" OD x 96" SCH 40 PIPE	-	-	1	-	29.33 LBS
7	MT-537	Ø2.375" OD x 126" SCH 40 PIPE	-	-	-	1	38.49 LBS

REVISIONS				
REV	ZONE	DESCRIPTION	BY	DATE
A		INITIAL RELEASE	LAP	01/08/01
B		UPDATE WTHRM2.02	LAP	01/16/01
C		UPDATE HARDWARE KIT	ACG	03/14/06



WT- HRM2- 72 SHOWN

These drawings and specifications are the proprietary property of ANDREW CORPORATION and may be used only for the specific purpose authorized in writing by Andrew Corporation. ALL DIMENSIONS ARE IN INCHES U.O.S. TOLERANCES UNLESS OTHERWISE SPECIFIED: .X = ± .06 ANGLES ±2° .XX = ± .03 FRACTIONS ±1/32 .XXX = ± .010 REMOVE BURRS AND BREAK EDGES .005 DO NOT SCALE THIS PRINT	DRAWN BY: ACG	SHEET: 1 of 1	PART NUMBER: WT-HRM2-SERIES
	CHECKED BY: TP	SCALE: NTS	DESCRIPTION: WATER TOWER HANDRAIL MOUNT
	DATE: 03/14/06	MATERIAL: A36, A53	DRAWING TYPE: ASSEMBLY DRAWING
	REVISION: C	FINISH: GALV A123	
	WEIGHT: 42.21 LBS	ORLAND PARK, IL. 60462 U.S.A.	