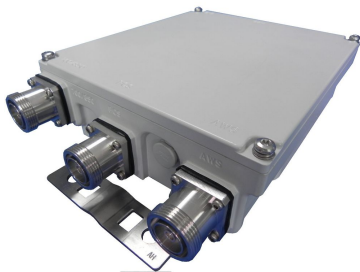


CBC71921-DF | E11F05P64



Triplexer 700–750 and Cellular/PCS/AWS

OBSOLETE

This product was discontinued on: October 31, 2018

Replaced By:

CBC61923-DS-43 Triplexer, 555-894/PCS/AWS+WCS, dc Sense,4.3-10
E14F10P57

Product Classification

Product Type Triplexer

General Specifications

Product Family CBC71921

Color Gray

Common Port Label COM

Modularity 1-Single

Mounting Pole | Wall

Mounting Pipe Hardware Band clamps (2)

RF Connector Interface 7-16 DIN Female

RF Connector Interface Body Style Medium neck

Dimensions

Height 210 mm | 8.268 in

Width 182 mm | 7.165 in

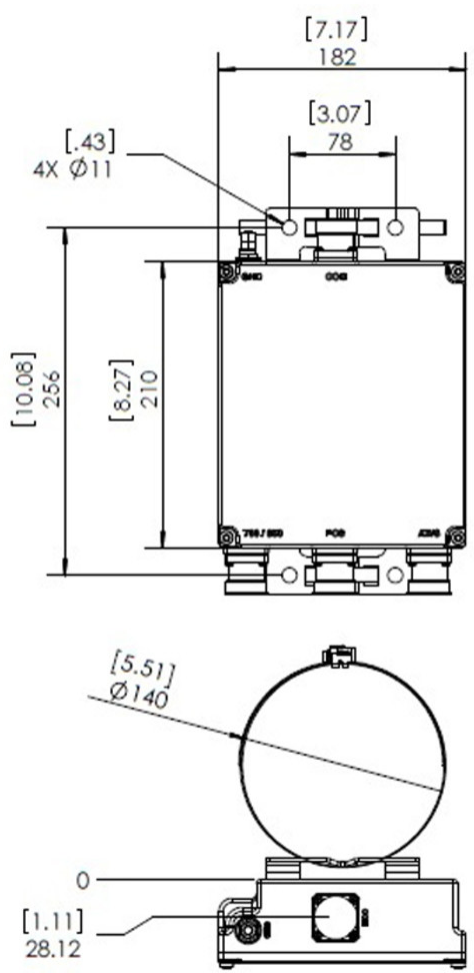
Depth 62 mm | 2.441 in

Ground Screw Diameter 6.35 mm | 0.25 in

Mounting Pipe Diameter Range 40–160 mm

CBC71921-DF | E11F05P64

Outline Drawing



Electrical Specifications

Impedance	50 ohm
License Band, Band Pass	APT 700 AWS 1700 CEL 850 LMR 750 LMR 800 PCS 1900 USA 700 USA 750

Electrical Specifications, Common Port

Composite Power, RMS	500 W
----------------------	-------

Electrical Specifications, dc Power/Alarm

dc/AISG Pass-through Method	Factory set
dc/AISG Pass-through Path	Branch 1 Branch 2 Branch 3

Lightning Surge Current	5 kA
Lightning Surge Current Waveform	8/20 waveform

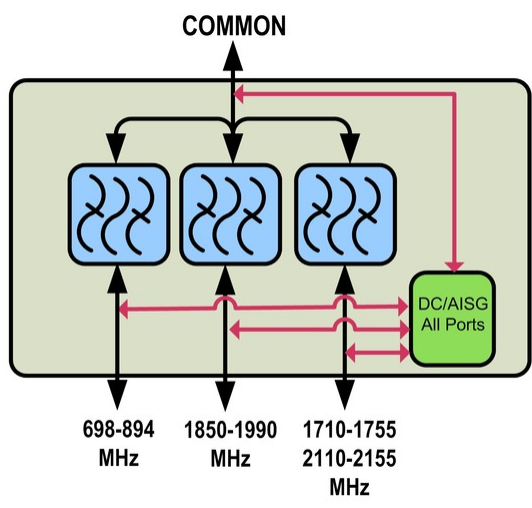
Electrical Specifications

Sub-module	1	1	1
Branch	1	2	3
Port Designation	700/850	PCS	AWS
License Band	APT 700, Band Pass CEL 850, Band Pass LMR 750, Band Pass LMR 800, Band Pass USA 700, Band Pass USA 750, Band Pass	PCS 1900, Band Pass	AWS 1700, Band Pass

Electrical Specifications, Band Pass

Frequency Range, MHz	698–894	1850–1990	1710–1755 2110–2155
Insertion Loss, typical, dB	0.3	0.3	0.3
Total Group Delay, maximum, ns	20	20	20
Return Loss, minimum, dB	22	22	22
Return Loss, typical, dB	24	24	24
Isolation, minimum, dB	50	50	50
Input Power, RMS, maximum, W	500	500	500
Input Power, PEP, maximum, W	5000	5000	5000
3rd Order PIM, typical, dBc	-153	-153	
3rd Order PIM Test Method	2 x 20 W CW tones	2 x 20 W CW tones	

Block Diagram



Environmental Specifications

Operating Temperature	-40 °C to +65 °C (-40 °F to +149 °F)
Relative Humidity	5%–100%
Ingress Protection Test Method	IEC 60529:2001, IP67

Packaging and Weights

Included	Mounting hardware
Volume	2.4 L
Weight, without mounting hardware	3.5 kg 7.716 lb

Regulatory Compliance/Certifications

Agency	Classification
ISO 9001:2015	Designed, manufactured and/or distributed under this quality management system

