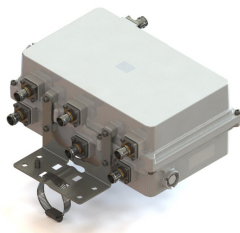


# E12F03P18



## CS-TPX 700/825-880/898.4-960 DC ALL, RJ30

- New 4.3-10 connectors for improved PIM performance and size reduction
- Additional Rejection in 880-890 MHz band 30 dB
- Twin configuration
- dc/AISG pass-through on all frequency ports

**OBSOLETE**

This product was discontinued on: December 30, 2024

### Product Classification

**Product Type** Triplexer

### General Specifications

**Product Family** CBC1821

**Color** Gray

**Common Port Label** PORT 3 COMMON

**Modularity** 2-Twin

**Mounting** Pole | Wall

**Mounting Pipe Hardware** Band clamps (2)

**RF Connector Interface** 4.3-10 Female

**RF Connector Interface Body Style** Long neck

### Dimensions

**Height** 337 mm | 13.268 in

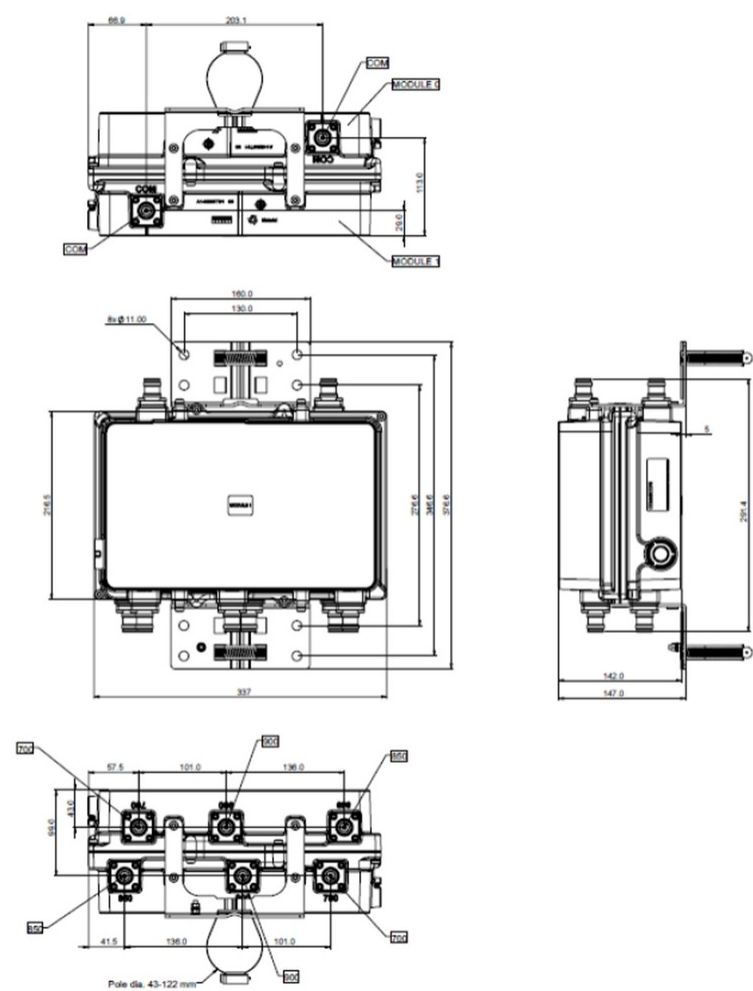
**Width** 216.5 mm | 8.524 in

**Depth** 142 mm | 5.591 in

**Mounting Pipe Diameter Range** 42.6–122 mm

### Outline Drawing

# E12F03P18



## Electrical Specifications

Impedance	50 ohm
License Band, Band Pass	APT 700   CEL 850   CEL 900   DCS 1800   IMT 2100   USA 700

## Electrical Specifications, dc Power/Alarm

dc/AISG Pass-through Method	Factory set
dc/AISG Pass-through Path	Branch 1   Branch 2   Branch 3
dc/AISG Pass-through, combiner	Branch 1   Branch 2   Branch 3
dc/AISG Pass-through, demultiplexer	Branch 1   Branch 2   Branch 3
Lightning Surge Current	5 kA
Lightning Surge Current Waveform	8/20 waveform

# E12F03P18

## Electrical Specifications

Sub-module	1   2	1   2	1   2
Branch	1	2	3
Port Designation	PORT 1 850	PORT 2 900	PORT 3 700
License Band	CEL 850, Band Pass	CEL 900, Band Pass	APT 700, Band Pass USA 700, Band Pass

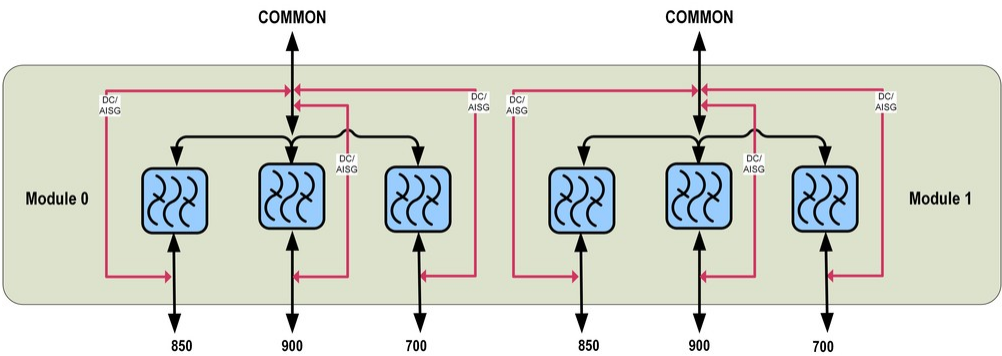
## Electrical Specifications, Band Pass

Frequency Range, MHz	825–880	898.4–960	703–803
Insertion Loss, typical, dB	0.35	0.3	0.3
Return Loss, typical, dB	20	20	20
Isolation, minimum, dB	50	50	50
Input Power, RMS, maximum, W	160	160	160
Input Power, PEP, maximum, W	2500	2500	2500
3rd Order PIM, typical, dBc	-153	-153	-153
3rd Order PIM Test Method	Two +43 dBm carriers	Two +43 dBm carriers	Two +43 dBm carriers

## Electrical Specifications, Band Reject

Frequency Range, MHz	880–890
Attenuation, minimum, dB	30

## Block Diagram



## Environmental Specifications

Operating Temperature	-40 °C to +60 °C (-40 °F to +140 °F)
Corrosion Test Method	IEC 60068-2-11, 30 days
Ingress Protection Test Method	IEC 60529:2001, IP67

# E12F03P18

---

## Packaging and Weights

Included	Mounting hardware
Volume	10.5 L
Weight, net	12 kg   26.455 lb

## Regulatory Compliance/Certifications

Agency	Classification
ISO 9001:2015	Designed, manufactured and/or distributed under this quality management system