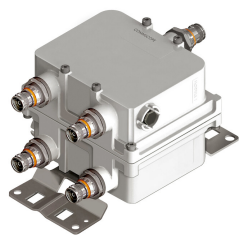


# E14F05P77



## Twin Diplexer 700/800 DC Bypass at 800MHz port, 4.3-10 connectors

- New 4.3-10 connectors for improved PIM performance and size reduction
- Industry leading PIM performance
- Designed for network modernization application, introduction of LTE700 and LTE800 on existing site
- dc/AISG pass-through on high frequency ports
- Clam shell configuration

**OBSOLETE**

Replaced By:

E14F07P08

Twin Diplexer, 703-788/791-960 MHz, DC Pass on All port, 4.3-10 connectors

## Product Classification

**Product Type** Diplexer

## General Specifications

**Product Family** CBC789

**Color** Gray

**Common Port Label** PORT 3 COMMON

**Modularity** 2-Twin

**Mounting** Pole | Wall

**Mounting Pipe Hardware** Band clamps (2)

**RF Connector Interface** 4.3-10 Female

**RF Connector Interface Body Style** Long neck

## Dimensions

**Height** 139 mm | 5.472 in

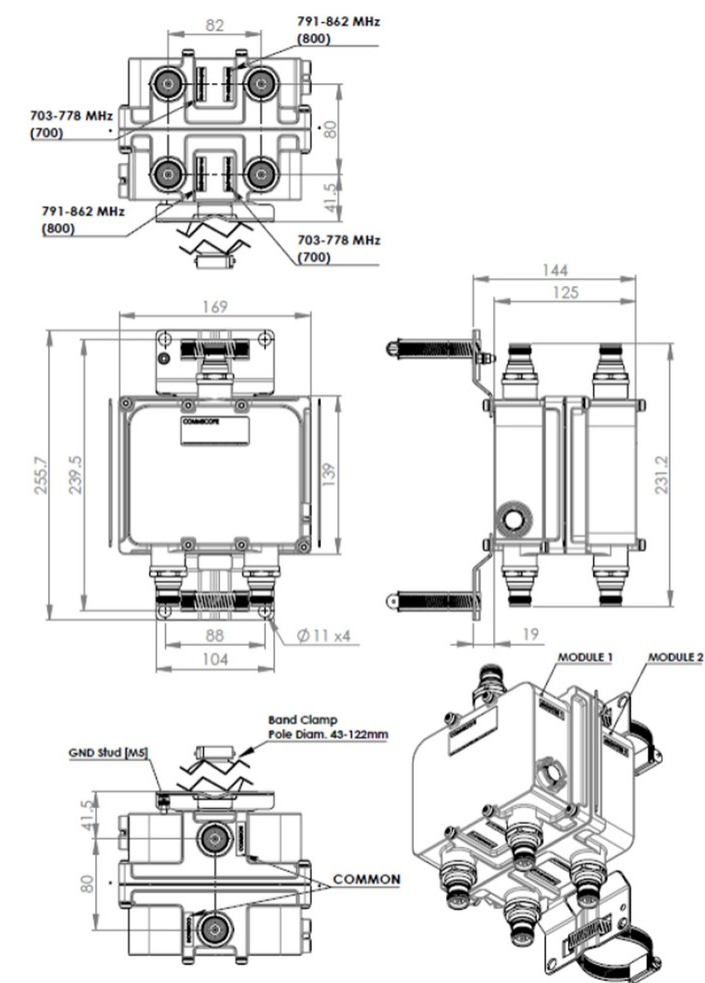
**Width** 169 mm | 6.654 in

**Depth** 125 mm | 4.921 in

**Mounting Pipe Diameter Range** 40–160 mm

## Outline Drawing

# E14F05P77



## Electrical Specifications

Impedance	50 ohm
License Band, Band Pass	APT 700   CEL 900   EDD 800   LMR 800   USA 700

## Electrical Specifications, dc Power/Alarm

dc/AISG Pass-through Method	Factory set
dc/AISG Pass-through Path	Branch 2
dc/AISG Pass-through, combiner	Branch 2
dc/AISG Pass-through, demultiplexer	Branch 2
Lightning Surge Current	10 kA
Lightning Surge Current Waveform	8/20 waveform

# E14F05P77

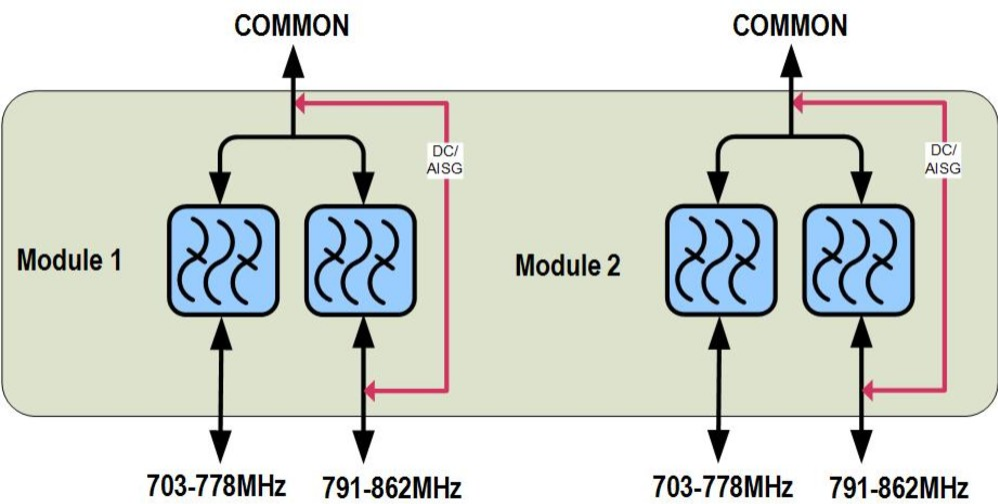
## Electrical Specifications

Sub-module	1   2	1   2
Branch	1	2
Port Designation	PORT 1 703-778	PORT 2 790-862
License Band	APT 700, Band Pass USA 700, Band Pass	EDD 800, Band Pass LMR 800, Band Pass

## Electrical Specifications, Band Pass

Frequency Range, MHz	703–778	790–862
Insertion Loss, typical, dB	0.3	0.3
Return Loss, typical, dB	20	20
Isolation, minimum, dB	35	35
Input Power, RMS, maximum, W	300	300
Input Power, PEP, maximum, W	3000	3000
3rd Order PIM, typical, dBc	-163	-163
3rd Order PIM Test Method	Two +43 dBm carriers	Two +43 dBm carriers

## Block Diagram



## Environmental Specifications

Operating Temperature	-40 °C to +65 °C (-40 °F to +149 °F)
Corrosion Test Method	IEC 60068-2-11, 30 days
Ingress Protection Test Method	IEC 60529:2001, IP67

# E14F05P77

---

## Packaging and Weights

Included	Mounting hardware
Volume	2.9 L
Weight, net	4 kg   8.818 lb
Weight, without mounting hardware	3.6 kg   7.937 lb

## Regulatory Compliance/Certifications

Agency	Classification
ISO 9001:2015	Designed, manufactured and/or distributed under this quality management system